

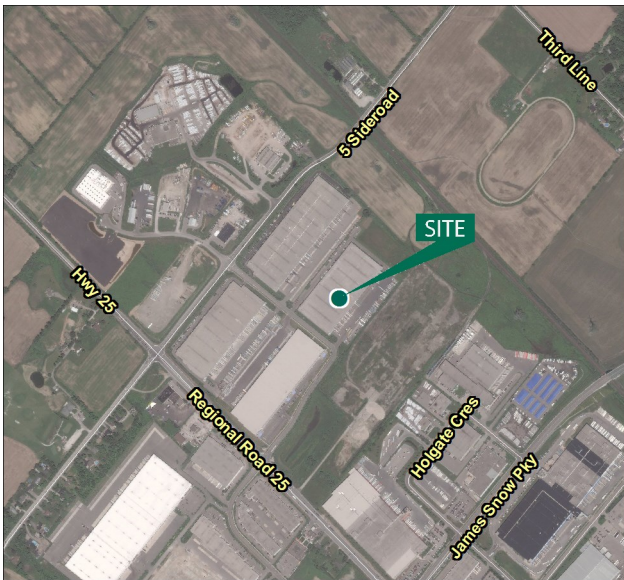
Prologis Milton Distribution Centre

2800 Peddie Road

Milton, ON CANADA



112,953 Square Feet Industrial Space For Lease



location

- Located at Highway 25/ Highway 401

facility

- 112,953 SF of 281,459 SF building
- 30' clear height
- 18 dock doors, 1 drive-in door
- 52' bay sizes with 60' staging bay
- ESFR sprinklers
- Lighting will be upgraded to LED

CBRE Limited

Evan S. White*

evan.white@cbre.com

ph +1 416.798.6232

fax +1 416.674.6575

cell +1 416.565.8961

5935 Airport Road, Suite 700

Mississauga, ON L4V 1W5

CBRE Limited

Kyle Hanna*

kyle.hanna@cbre.com

ph +1 416.798.6255

fax +1 416.674.6575

cell +1 905.407.8008

5935 Airport Road, Suite 700

Mississauga, ON L4V 1W5

Prologis

Bill Bolender**

wbolender@prologis.com

ph +1 647.258.2611

fax +1 647.258.2601

cell +1 416.509.9533

185 The West Mall, Suite 700

Toronto, ON M9C 5L5

*Sales Representative

** Broker

No warranty or representation, expressed or implied, is made as to the accuracy of the information contained herein, and same is submitted subject to error and omissions.

Prologis Milton Distribution Centre

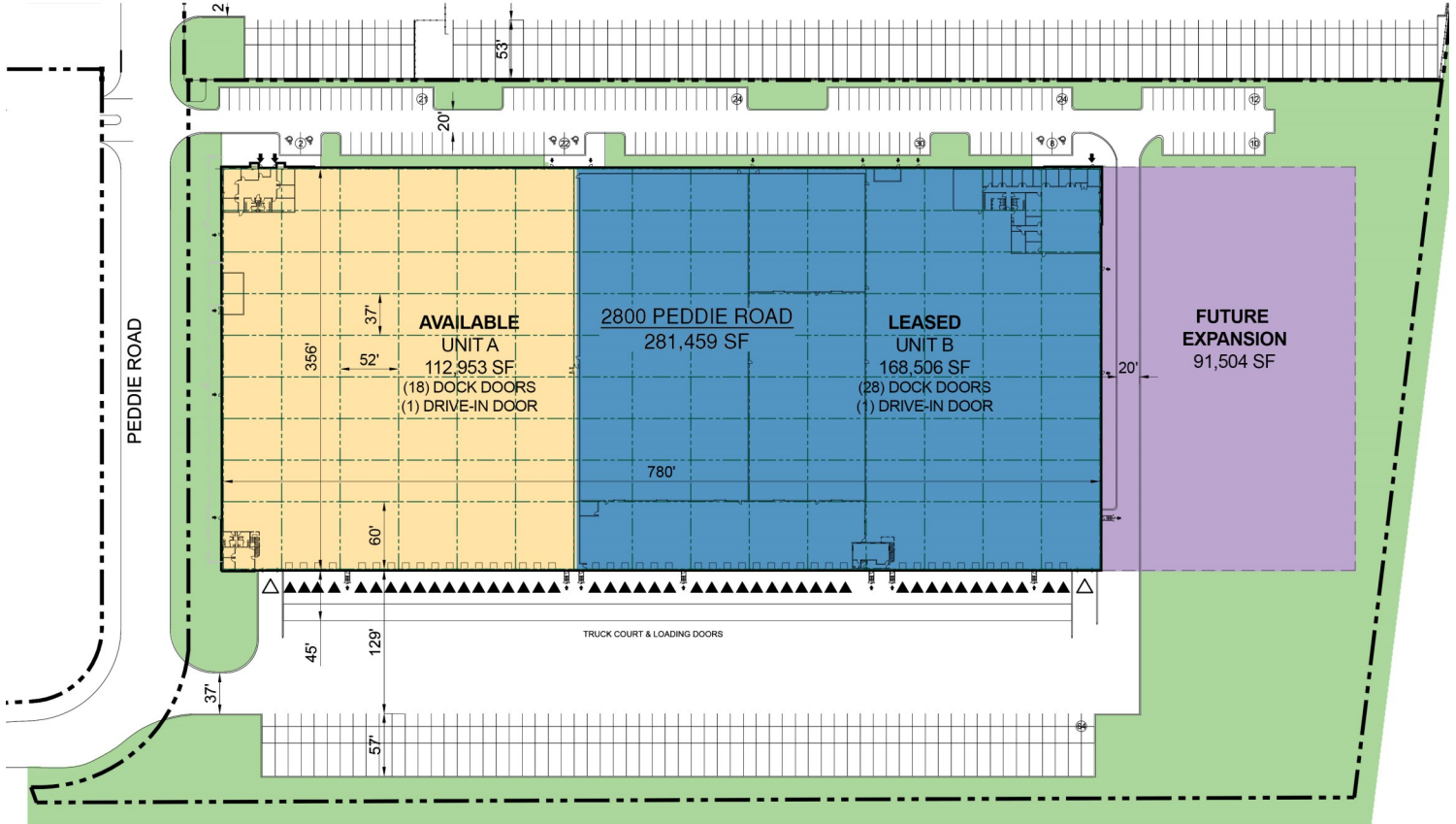
2800 Peddie Road

Milton, ON CANADA



PROLOGIS

112,953 Square Feet Industrial Space For Lease



LEGEND:

- AVAILABLE
- LEASED
- PLANNED/FUTURE CONSTRUCTION
- DOCK DOOR
- DRIVE IN DOOR



CBRE Limited

Evan S. White*

evan.white@cbre.com

ph +1 416.798.6232

fax +1 416.674.6575

cell +1 416.565.8961

5935 Airport Road, Suite 700

Mississauga, ON L4V 1W5

CBRE Limited

Kyle Hanna*

kyle.hanna@cbre.com

ph +1 416.798.6255

fax +1 416.674.6575

cell +1 905.407.8008

5935 Airport Road, Suite 700

Mississauga, ON L4V 1W5

Prologis

Bill Bolender**

wbolender@prologis.com

ph +1 647.258.2611

fax +1 647.258.2601

cell +1 416.509.9533

185 The West Mall, Suite 700

Toronto, ON M9C 5L5

*Sales Representative

** Broker

No warranty or representation, expressed or implied, is made as to the accuracy of the information contained herein, and same is submitted subject to error and omissions.