



5400 S 60TH STREET
GREENDALE, WI 53129

FEATURES

Position your business in a premier Class A facility within a campus-like setting, offering high visibility and excellent freeway access. This property features an outdoor walking path and growing common amenities, including shared conference and training rooms. Tenants will also benefit from community events hosted by ownership. Flexible floor plans accommodate businesses of all sizes, with landlord consideration for TI packages based on lease terms.

Zoning: **O: Office Research District**

Sewer: **Municipal** / Water: **Municipal**

A/C: **Throughout**

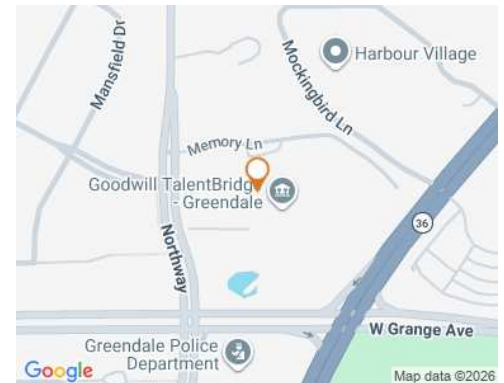
Sprinkler: **Yes**

Lighting: **LED**

Parking Spaces: **Paved Lot with 459 Spaces**

Elevator: **Yes**

Listing: **4792**



OFFICE FOR LEASE

Total SF: **153,588**

Available SF: **95,487**

Total Acres **14.45**

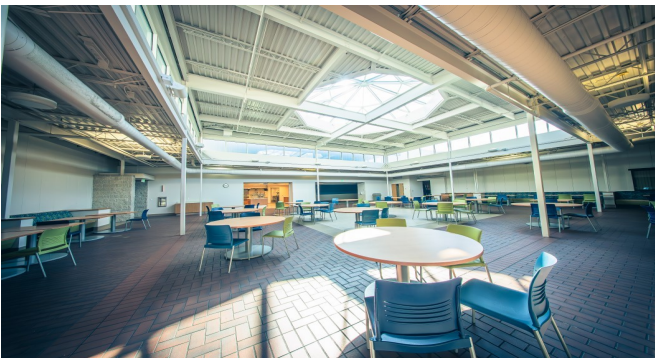
Lease Rate: **\$14.00 - \$22.00 RSF Gross**

Lease Rate: **\$8.50 PSF NNN**

Matthew Judson, President
262-695-8800
matt.judson@judsonrealestate.com

Colleen Geiger, Sales Agent
262-695-8800
cgeiger@judsonrealestate.com

Judson & Associates, S.C.
2831 N. Grandview Blvd, Suite 222
Pewaukee, WI 53072

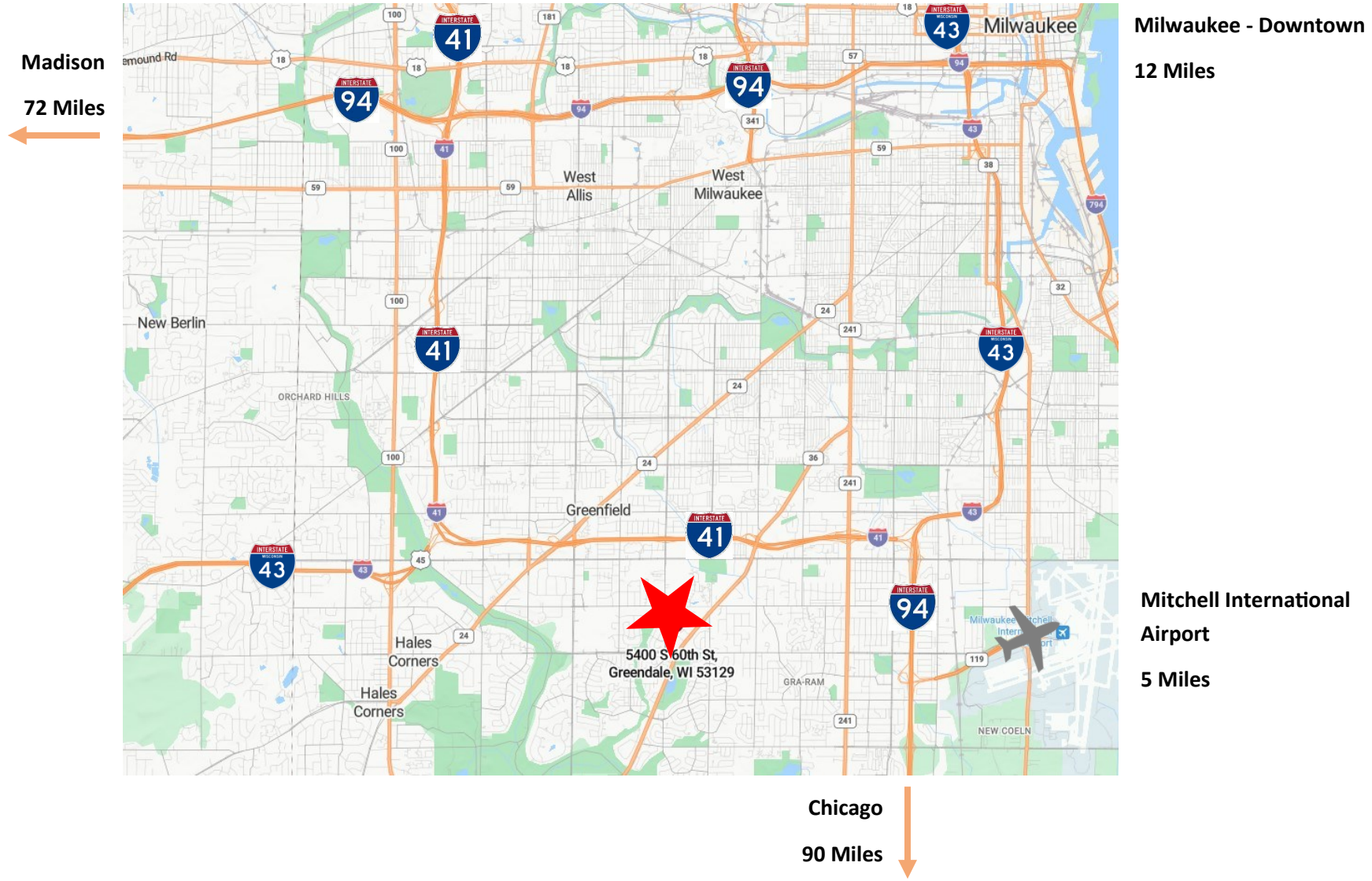


Matthew Judson, President
262-695-8800
matt.judson@judsonrealestate.com

Colleen Geiger, Sales Agent
262-695-8800
cgeiger@judsonrealestate.com

Judson & Associates, S.C.
2831 N. Grandview Blvd, Suite 222
Pewaukee, WI 53072

5400 S 60th Street, Greendale, Wisconsin



Matt Judson, President
262-695-8800
matt.judson@judsonrealestate.com

Colleen Geiger, Sales Agent
262-695-8800
cgeiger@judsonrealestate.com

2831 N Grandview Blvd, Suite 222
Pewaukee, WI 53072
www.judsonrealestate.com



5400 S 60th Street, Greendale

Amenities



5400 S 60th Street in Greendale offers a variety of amenities designed to enhance both work and leisure experiences. Located just minutes from historic downtown Greendale and Southridge Mall, the property boasts:

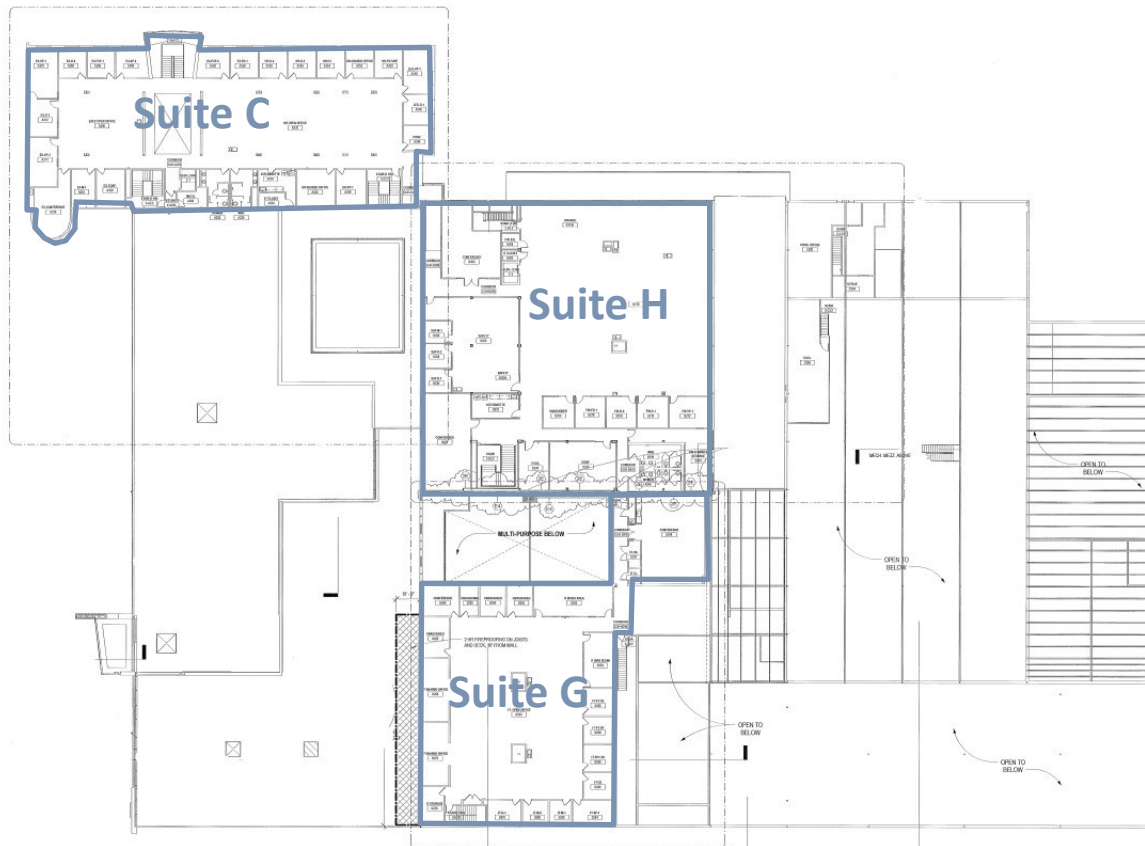
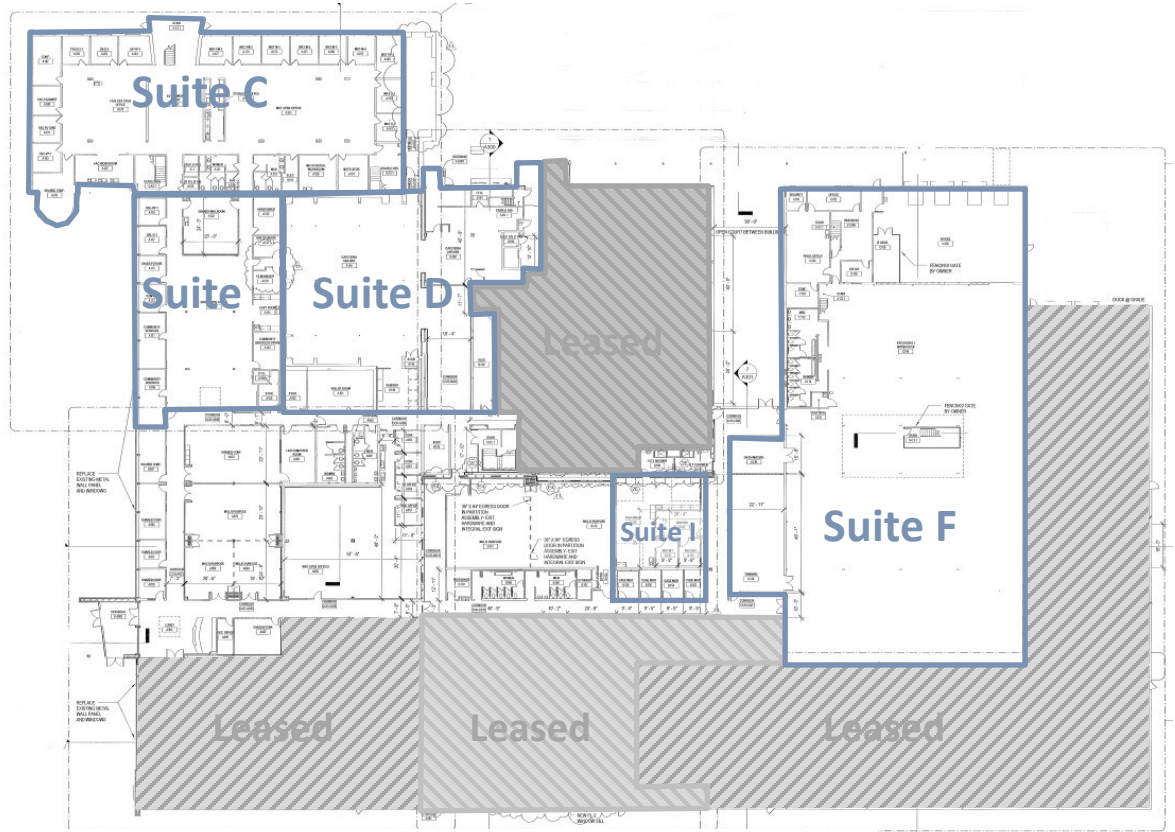
- **Outdoor Features:** A walking trail and pond, providing a serene environment for relaxation and exercise.
- **Conference / Multi Purpose Rooms:** Multiple rooms available for reservation, suitable for various events and meetings.
- **Kitchen Spaces:** Available to rent on short term or long term agreements. Great for catering and will have the opportunity to provide services to the building occupants.
- **Possible Future Developments:**
 - **Golf Simulator:** An interactive area for golf enthusiasts.
 - **Event Space:** A versatile venue for hosting events.
 - **Fitness Room:** A fully-equipped fitness center.
 - **Basketball Courts:** Indoor and/or outdoor basketball courts for recreational and competitive play.
 - **Food Trucks:** Food trucks available on certain days, offering a variety of dining options.
 - **Farmers Market:** A Farmer's Market to support local vendors and provide fresh produce and goods.

Matt Judson, President
2m2-695-8800
matt.judson@judsonrealestate.com

Colleen Geiger, Sales Agent
262-695-8800
cgeiger@judsonrealestate.com

2831 N Grandview Blvd, Suite 222
Pewaukee, WI 53072
www.judsonrealestate.com

1st Floor



2nd Floor

Matt Judson, President
2m2-695-8800
matt.judson@judsonrealestate.com

Colleen Geiger, Sales Agent
262-695-8800
cgeiger@judsonrealestate.com

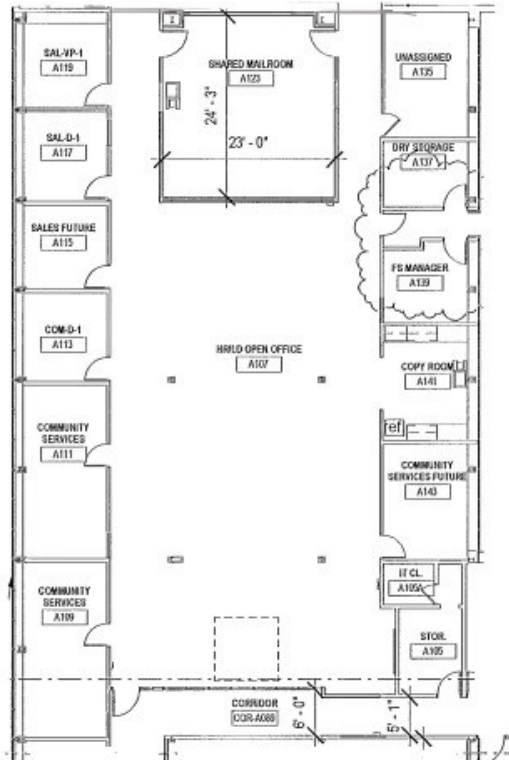
2831 N Grandview Blvd, Suite 222
Pewaukee, WI 53072
www.judsonrealestate.com



5400 S 60th Street, Greendale

Suite B

+/- 6,560 RSF Total \$18.00/RSF Gross



Note: Suites B and D may be combined for a total of 13,636 RSF.

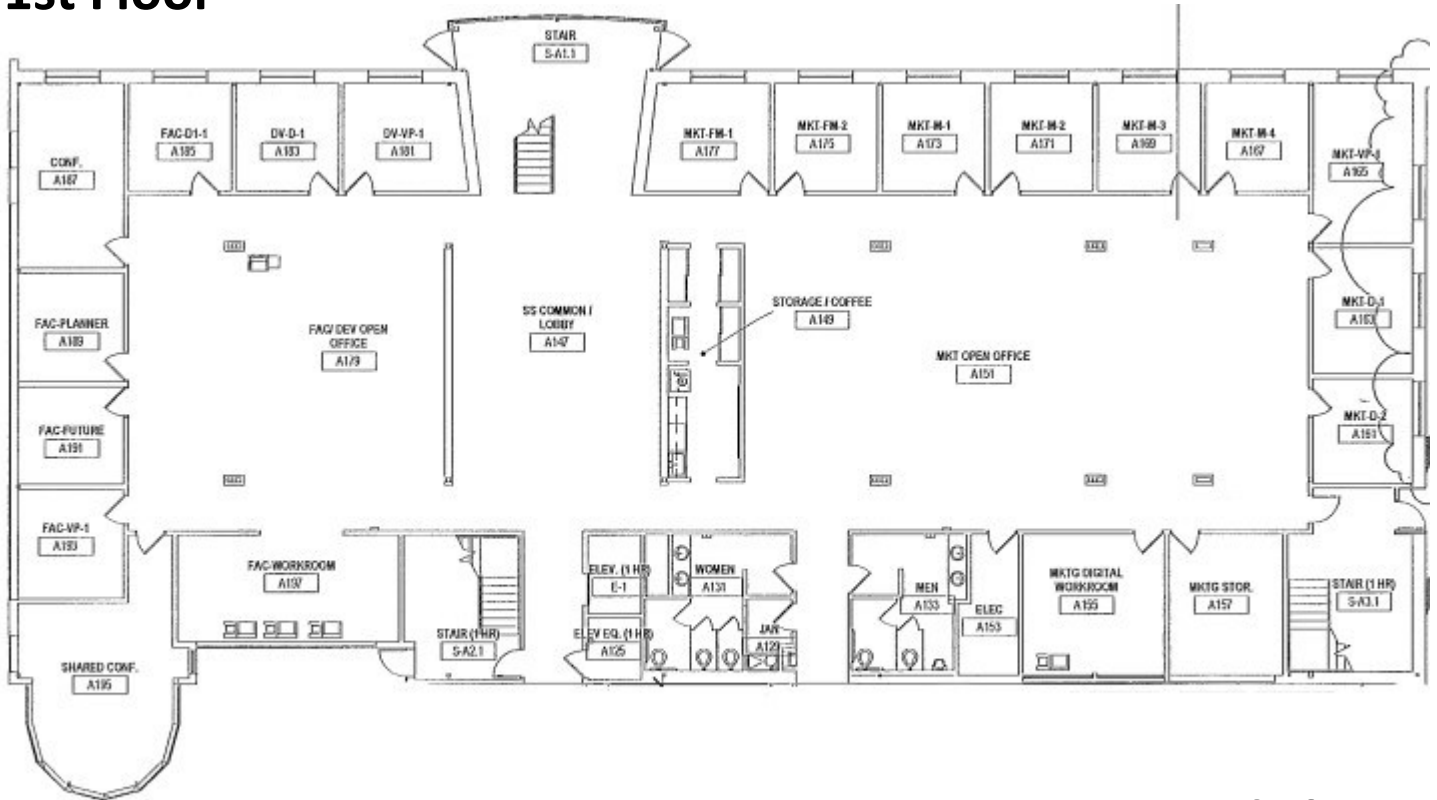


Matt Judson, President
2m2-695-8800
matt.judson@judsonrealestate.com

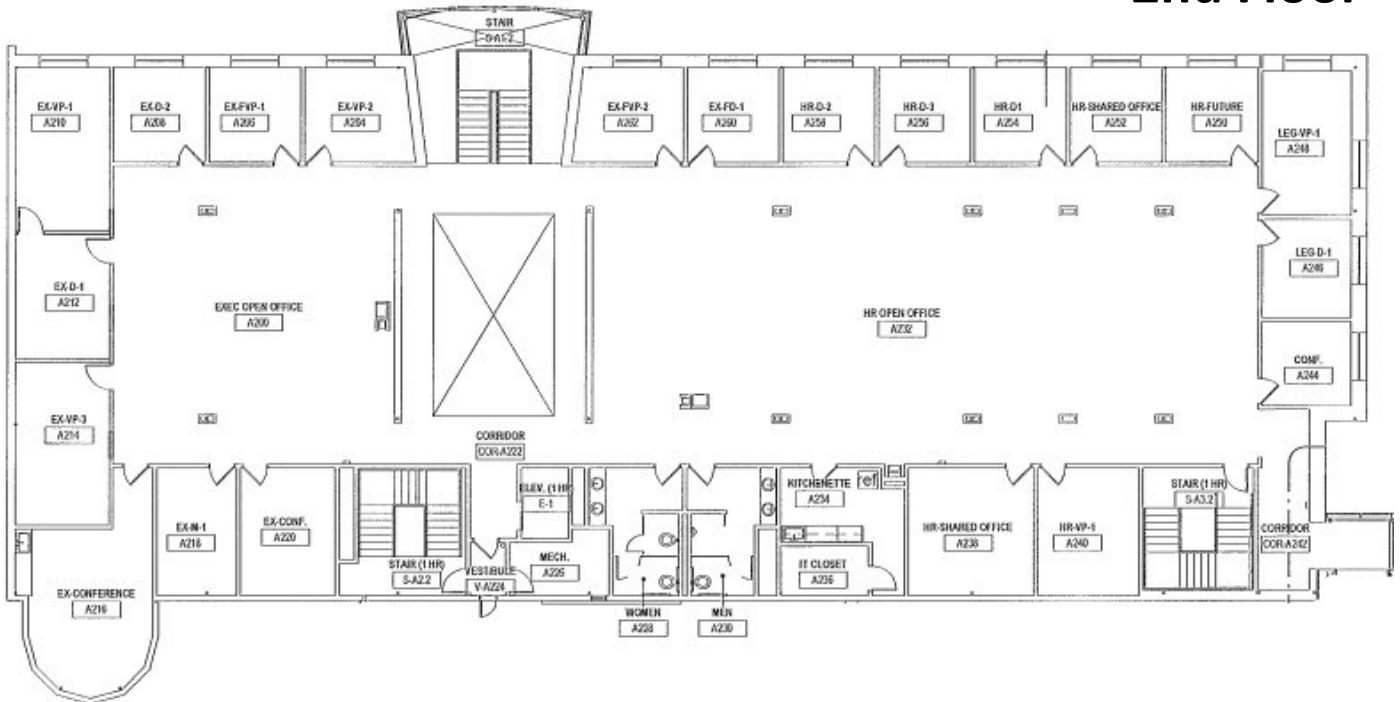
Colleen Geiger, Sales Agent
262-695-8800
cgeiger@judsonrealestate.com

2831 N Grandview Blvd, Suite 222
Pewaukee, WI 53072
www.judsonrealestate.com

1st Floor



2nd Floor

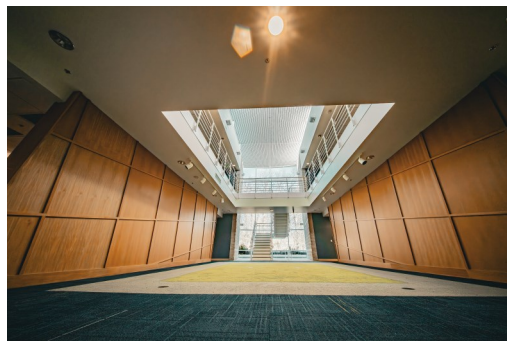
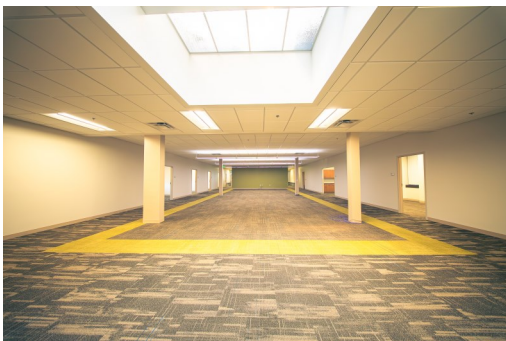
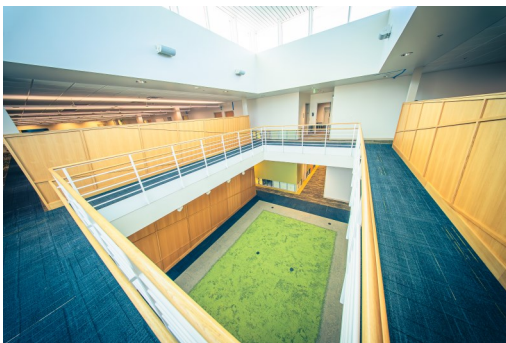
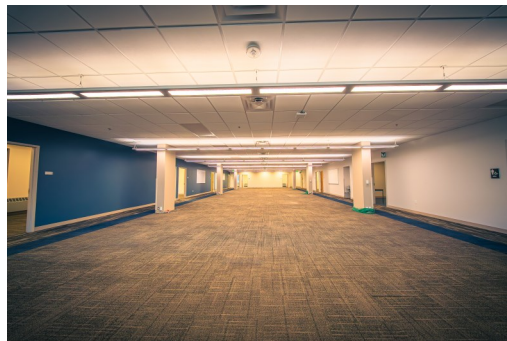
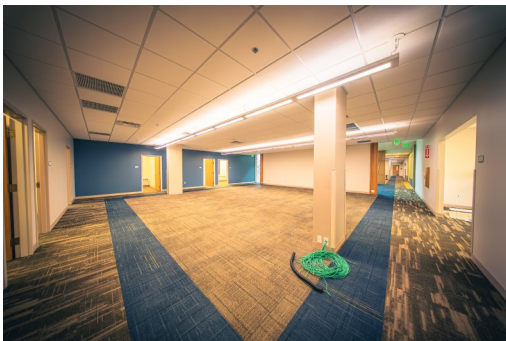




5400 S 60th Street, Greendale

Suite C

+/- 26,129 RSF Total \$22.00/RSF Gross



Matt Judson, President
2m2-695-8800
matt.judson@judsonrealestate.com

Colleen Geiger, Sales Agent
262-695-8800
cgeiger@judsonrealestate.com

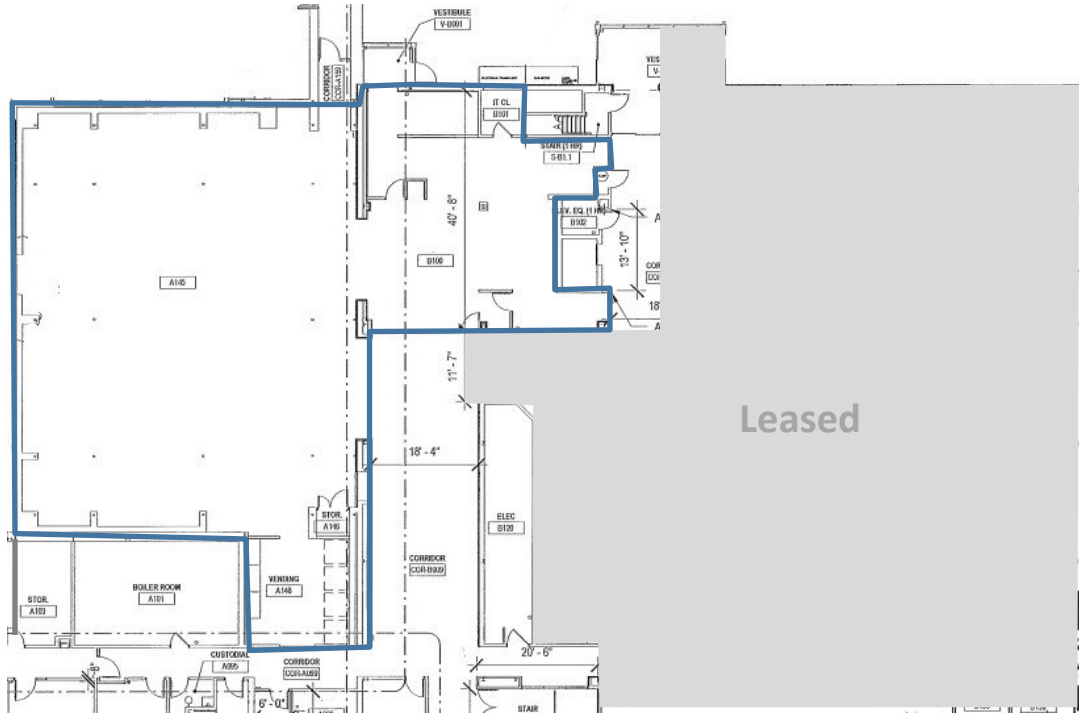
2831 N Grandview Blvd, Suite 222
Pewaukee, WI 53072
www.judsonrealestate.com



5400 S 60th Street, Greendale

Suite D

+/- 7,076 RSF Total \$18.00/RSF Gross



Note: Suites B and D may be combined for a total of 13,636 RSF.



Matt Judson, President
2m2-695-8800
matt.judson@judsonrealestate.com

Colleen Geiger, Sales Agent
262-695-8800
cgeiger@judsonrealestate.com

2831 N Grandview Blvd, Suite 222
Pewaukee, WI 53072
www.judsonrealestate.com



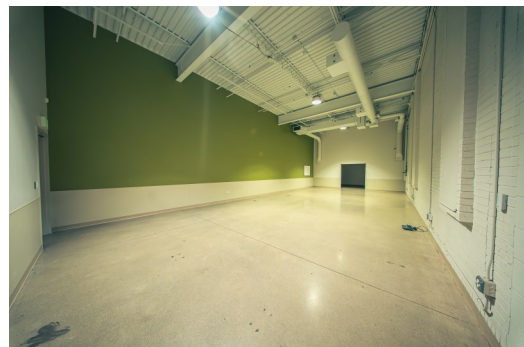
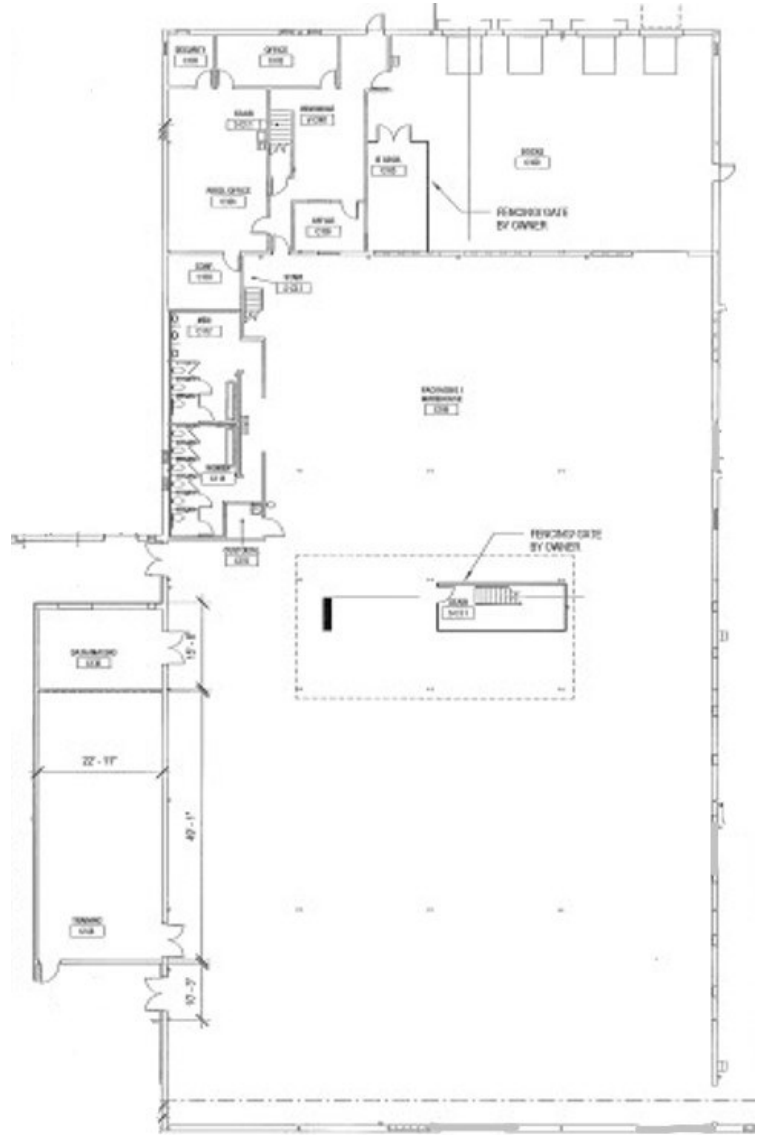
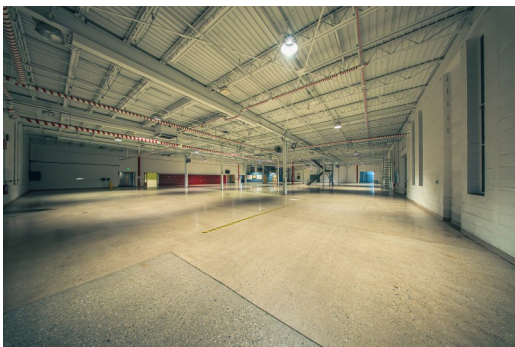
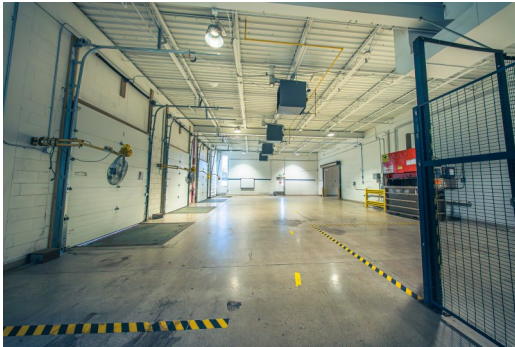
5400 S 60th Street, Greendale

Suite F

+/- 23,983 USF Total \$8.50/USF NNN

Features:

- Airlines
- Cardboard Bailer
- A/C Throughout



Matt Judson, President
2m2-695-8800
matt.judson@judsonrealestate.com

Colleen Geiger, Sales Agent
262-695-8800
cgeiger@judsonrealestate.com

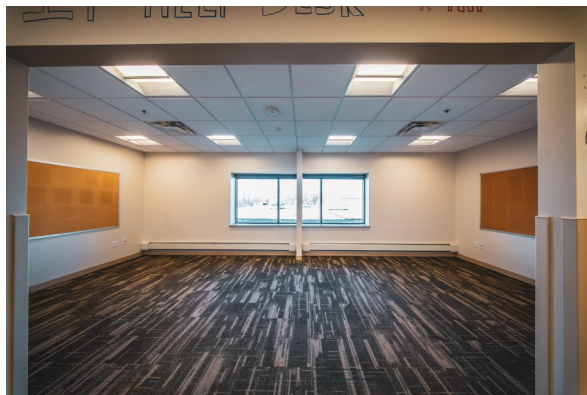
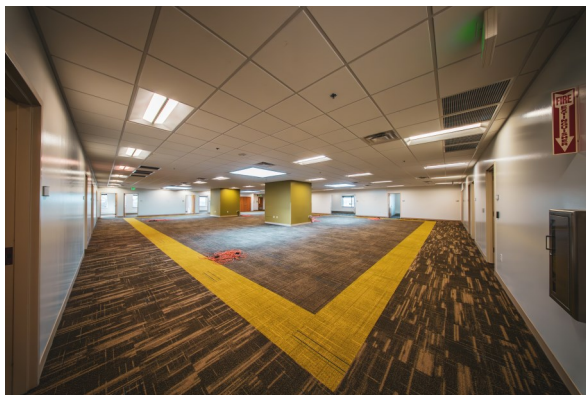
2831 N Grandview Blvd, Suite 222
Pewaukee, WI 53072
www.judsonrealestate.com



5400 S 60th Street, Greendale

Suite G

+/- 11,440 RSF Total \$14.00/RSF Gross



Matt Judson, President
2m2-695-8800
matt.judson@judsonrealestate.com

Colleen Geiger, Sales Agent
262-695-8800
cgeiger@judsonrealestate.com

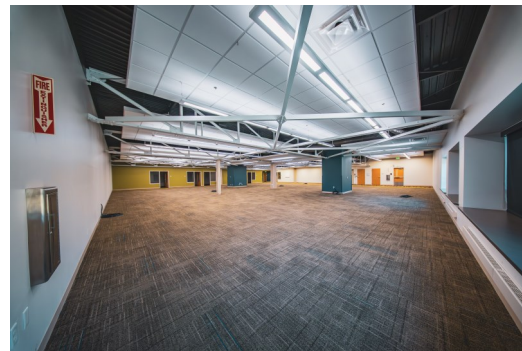
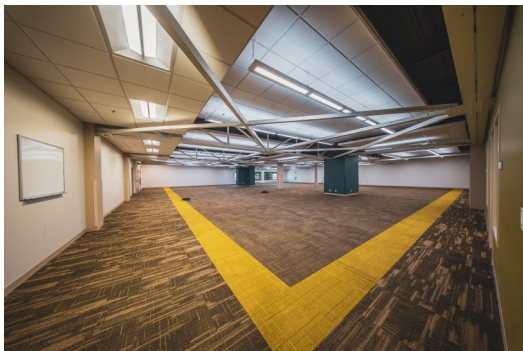
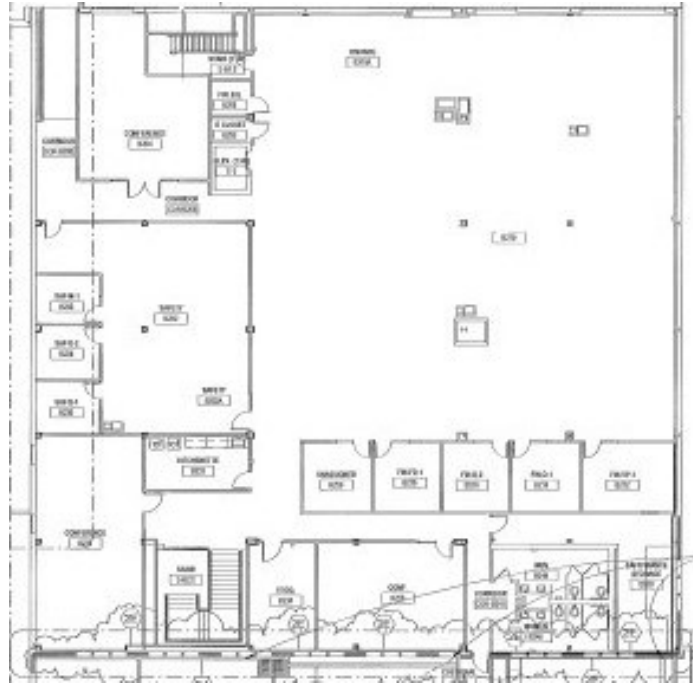
2831 N Grandview Blvd, Suite 222
Pewaukee, WI 53072
www.judsonrealestate.com



5400 S 60th Street, Greendale

Suite H

+/- 17,250 RSF Total \$14.00/RSF Gross



Matt Judson, President
2m2-695-8800
matt.judson@judsonrealestate.com

Colleen Geiger, Sales Agent
262-695-8800
cgeiger@judsonrealestate.com

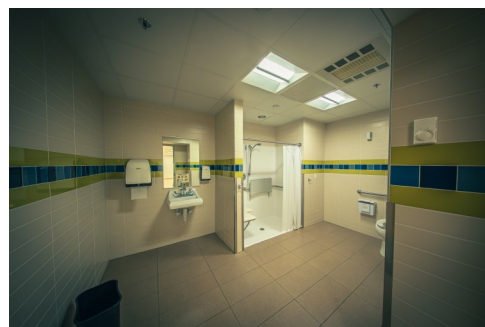
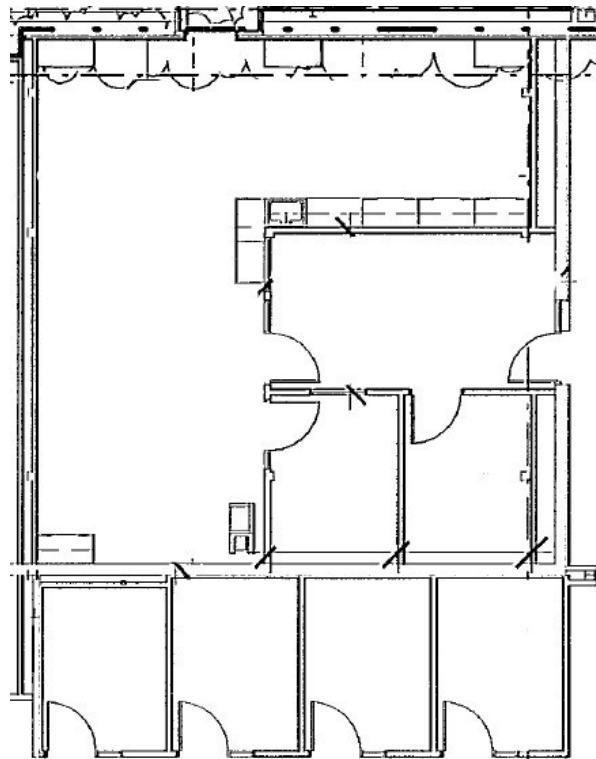
2831 N Grandview Blvd, Suite 222
Pewaukee, WI 53072
www.judsonrealestate.com



5400 S 60th Street, Greendale

Suite I

+/- 1,872 RSF Total \$16.00/RSF Gross



Matt Judson, President
2m2-695-8800
matt.judson@judsonrealestate.com

Colleen Geiger, Sales Agent
262-695-8800
cgeiger@judsonrealestate.com

2831 N Grandview Blvd, Suite 222
Pewaukee, WI 53072
www.judsonrealestate.com

1 Prior to negotiating on your behalf the Broker must provide you the following disclosure statement:

2 **BROKER DISCLOSURE TO CUSTOMERS**

3 You are a customer of the broker. The broker is either an agent of another party in the transaction or a subagent of another broker
4 who is the agent of another party in the transaction. The broker, or salesperson acting on behalf of the broker, may provide
5 brokerage services to you. Whenever the broker is providing brokerage services to you, the broker owes you, the customer, the
6 following duties:

7 ■ The duty to provide brokerage services to you fairly and honestly.

8 ■ The duty to exercise reasonable skill and care in providing brokerage services to you.

9 ■ The duty to provide you with accurate information about market conditions within a reasonable time if you request it, unless
10 disclosure of the information is prohibited by law.

11 ■ The duty to disclose to you in writing certain material adverse facts about a property, unless disclosure of the information is
12 prohibited by law (See Lines 47-55).

13 ■ The duty to protect your confidentiality. Unless the law requires it, the broker will not disclose your confidential information or the
14 confidential information of other parties (See Lines 22-39).

15 ■ The duty to safeguard trust funds and other property the broker holds.

16 ■ The duty, when negotiating, to present contract proposals in an objective and unbiased manner and disclose the advantages and
17 disadvantages of the proposals.

18 Please review this information carefully. A broker or salesperson can answer your questions about brokerage services, but if you
19 need legal advice, tax advice, or a professional home inspection, contact an attorney, tax advisor, or home inspector.

20 This disclosure is required by section 452.135 of the Wisconsin statutes and is for information only. It is a plain-language summary of
21 a broker's duties to a customer under section 452.133 (1) of the Wisconsin statutes.

22 **CONFIDENTIALITY NOTICE TO CUSTOMERS**

23 **BROKER WILL KEEP CONFIDENTIAL ANY INFORMATION GIVEN TO BROKER IN CONFIDENCE, OR ANY INFORMATION
24 OBTAINED BY BROKER THAT HE OR SHE KNOWS A REASONABLE PERSON WOULD WANT TO BE KEPT CONFIDENTIAL,
25 UNLESS THE INFORMATION MUST BE DISCLOSED BY LAW OR YOU AUTHORIZE THE BROKER TO DISCLOSE PARTICULAR
26 INFORMATION. A BROKER SHALL CONTINUE TO KEEP THE INFORMATION CONFIDENTIAL AFTER BROKER IS NO LONGER
27 PROVIDING BROKERAGE SERVICES TO YOU.**

28 **THE FOLLOWING INFORMATION IS REQUIRED TO BE DISCLOSED BY LAW:**

29 1. **MATERIAL ADVERSE FACTS, AS DEFINED IN SECTION 452.01 (5g) OF THE WISCONSIN STATUTES (SEE LINES 47-55),**

30 2. **ANY FACTS KNOWN BY THE BROKER THAT CONTRADICT ANY INFORMATION INCLUDED IN A WRITTEN INSPECTION
31 REPORT ON THE PROPERTY OR REAL ESTATE THAT IS THE SUBJECT OF THE TRANSACTION.**

32 **TO ENSURE THAT THE BROKER IS AWARE OF WHAT SPECIFIC INFORMATION YOU CONSIDER CONFIDENTIAL, YOU MAY LIST
33 THAT INFORMATION BELOW (SEE LINES 35-36). AT A LATER TIME, YOU MAY ALSO PROVIDE THE BROKER WITH OTHER
34 INFORMATION YOU CONSIDER TO BE CONFIDENTIAL.**

35 **CONFIDENTIAL INFORMATION:**

36 _____

37 **NONCONFIDENTIAL INFORMATION** (The following information may be disclosed by Broker):

38 _____

39 (INSERT INFORMATION YOU AUTHORIZE THE BROKER TO DISCLOSE SUCH AS FINANCIAL QUALIFICATION INFORMATION.)

40 **CONSENT TO TELEPHONE SOLICITATION**

41 I/We agree that the Broker and any affiliated settlement service providers (for example, a mortgage company or title company) may
42 call our/my home or cell phone numbers regarding issues, goods and services related to the real estate transaction until I/We
43 withdraw this consent in writing. List Home/Cell Numbers:

44 **SEX OFFENDER REGISTRY**

45 Notice: You may obtain information about the sex offender registry and persons registered with the registry by contacting the
46 Wisconsin Department of Corrections on the Internet at: <http://offender.doc.state.wi.us/public/> or by phone at 877-234-0085.

47 **DEFINITION OF MATERIAL ADVERSE FACTS**

48 a "material adverse fact" is defined in Wis. Stat. § 452.01 (5g) as an adverse fact that a party indicates is of such significance, or that
49 is generally recognized by a competent licensee as being of such significance to a reasonable party, that it affects or would affect
50 the party's decision to enter into a contract or agreement concerning a transaction or affects or would affect the party's decision
51 about the terms of such a contract or agreement. An "adverse fact" is defined in Wis. Stat. § 452.01 (1e) as a condition or occurrence
52 that a competent licensee generally recognizes will significantly and adversely affect the value of the property, significantly reduce
53 the structural integrity of improvements to real estate, or present a significant health risk to occupants of the property, or information
54 that indicates that a party to a transaction is not able to or does not intend to meet his or her obligations under a contract or
55 agreement made concerning the transaction.

No representation is made as to the legal validity of any provision or the adequacy
of any provision in any specific transaction.

Copyright 2006 by Wisconsin REALTORS[®] Association
Drafted by Attorney Richard J. Staff

Judson & Associates SC
2831 N Grandview Blvd, Suite 222, Pewaukee WI 53072
Phone: (262) 695-8800
Fax: (262) 695-8801

NAIOP

COMMERCIAL REAL ESTATE
DEVELOPMENT ASSOCIATION
WISCONSIN CHAPTER