

# Gerald L. Gamble Co.

Commercial and Industrial Realtors

204 N. Robinson, Suite 1450 Oklahoma City, OK 73102 Tel. 405-232-1138 Fax 405-239-6805 www.geraldgambleco.com

## FOR LEASE

### 15,825-Sq.Ft. Masonry Warehouse

*3500 S. Council Rd.*

*Oklahoma City*



### Property Features

15,825-Sq.Ft. Tilt-Up Masonry Warehouse on 1-Acre Site ~ Zoned "I-3" Heavy Industrial

Two Large Drive-In Doors, Dock-High Door Can be Added

1,200 Sq.Ft. of Office Space, Can Be Expanded

Heavy Electrical ~ 480V/3-Phase/600Amp

20-Ft. Ceiling Height ~ Building 100% Sprinklered

Corner Location, Easy Access to I-40 & Hwy 152

LEASE PRICE: \$11.00 Per Sq.Ft., NNN

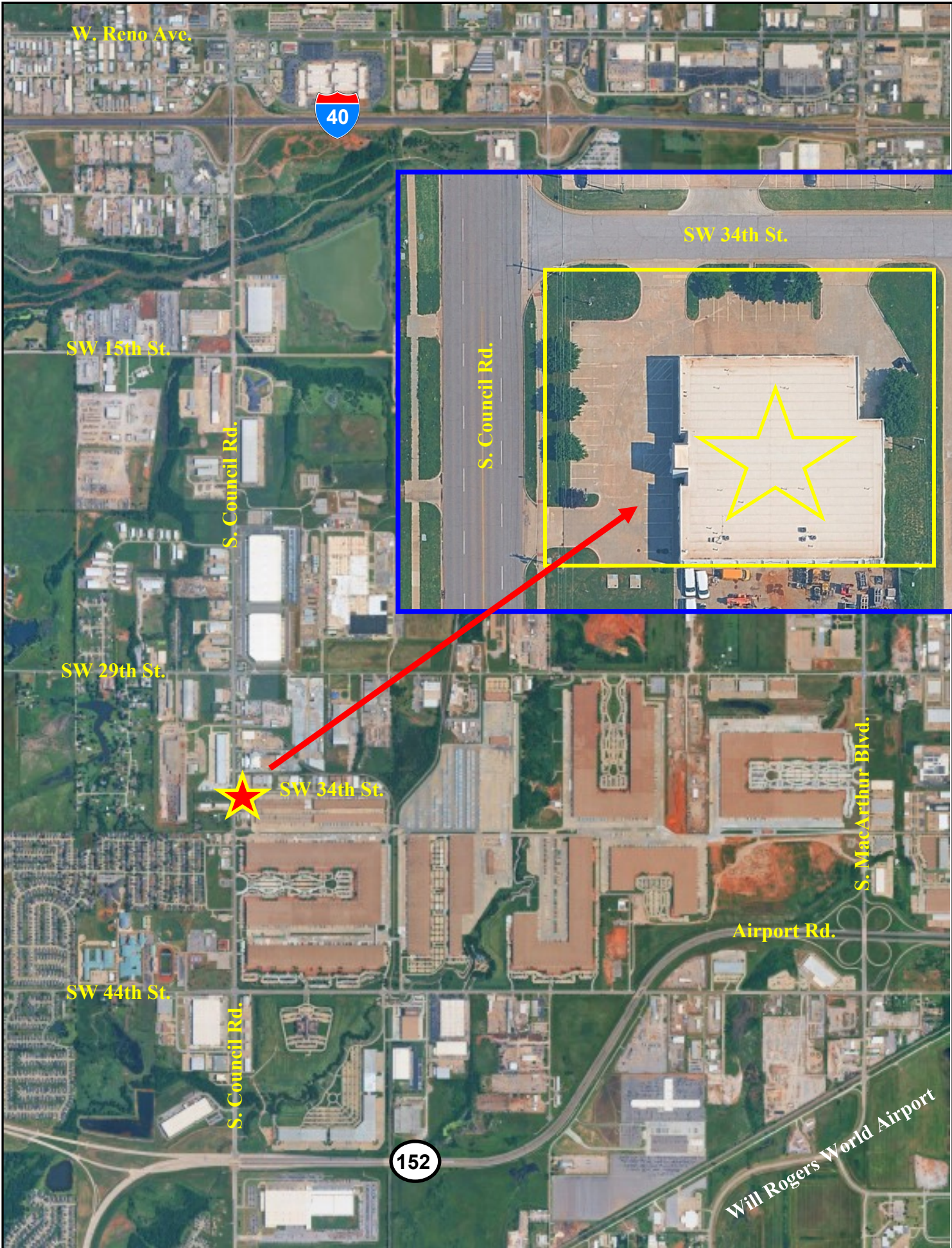


*For Further Information Contact*  
Gerald L. Gamble 405-232-1138  
[gambleokc@gerealdgambleco.com](mailto:gambleokc@gerealdgambleco.com)



The above statements, while not guaranteed, are from sources believed to be reliable.  
Offered subject to sale, change or withdrawal.





W. Reno Ave.



SW 34th St.

SW 15th St.

S. Council Rd.

S. Council Rd.

SW 29th St.



SW 34th St.

S. MacArthur Blvd.

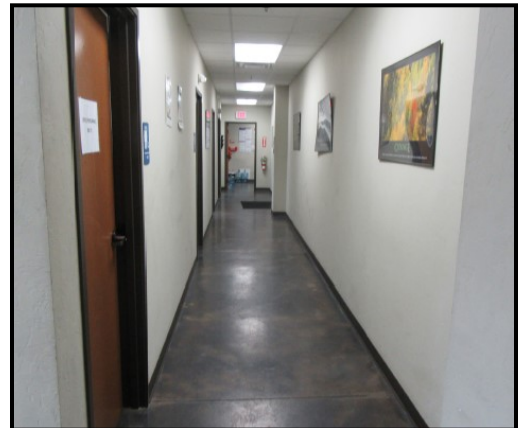
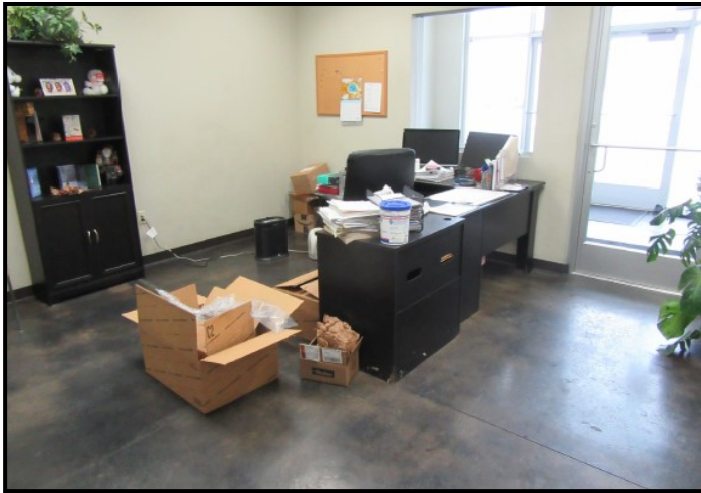
Airport Rd.

SW 44th St.

S. Council Rd.



Will Rogers World Airport



**3500 S. Council Rd.**  
**Oklahoma City**  
**15,825± Sq.Ft.**