

For Lease

2,062 sf

7325 Knightdale Blvd
Knightdale, NC 27545

Freestanding Office
or Retail



PROPERTY FEATURES

Lease Rate: \$33.60 psf

- BUILDING - 2,062 SF
- LOT - 0.33 ACRES
- ZONING - HB
- YEAR BUILT - 1950
- DEDICATED PARKING
- MONUMENT SIGNAGE
- HIGHWAY EXPOSURE
- FLEXIBLE LAYOUT

Property features 5 private offices, work areas, 2 restrooms & break room. Dedicated parking with monument & building signage on Knightdale Blvd. Great for office/retail with Highway visibility.



Fleming Properties, Inc.

Staying the Course

Robin Fleming
(919)215-5621
rfleming@flemingpropinc.com

Joel Fleming
(919)215-2624
joel@devereuxnc.com

For Lease 2,062 sf

7325 Knightdale Blvd
Knightdale, NC 27545

Exterior Photos



Main Entrance

Front Parking



Fleming Properties, Inc.

Staying the Course

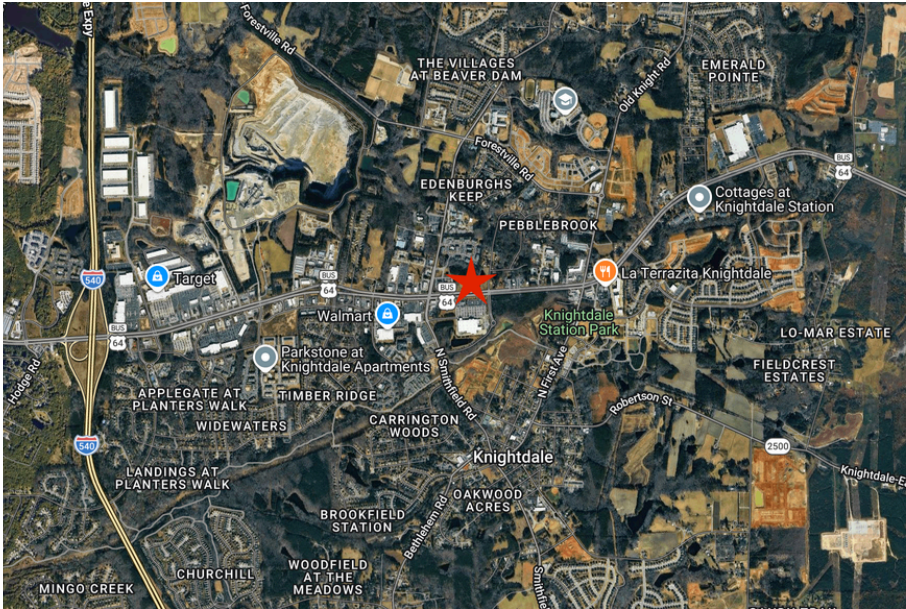
Robin Fleming
(919)215-5621
rfleming@flemingpropinc.com

Joel Fleming
(919)215-2624
joel@devereuxnc.com

For Lease 2,062 sf

7325 Knightdale Blvd
Knightdale, NC 27545

Location Info



Highway Access:

I-540 - 1.7 mi

I-87 - 3.5 mi

Demographics (3 mile):

2025 Pop - 30,033

Avg HH Income - \$107,722

VPD - 38,500



Fleming Properties, Inc.

Staying the Course

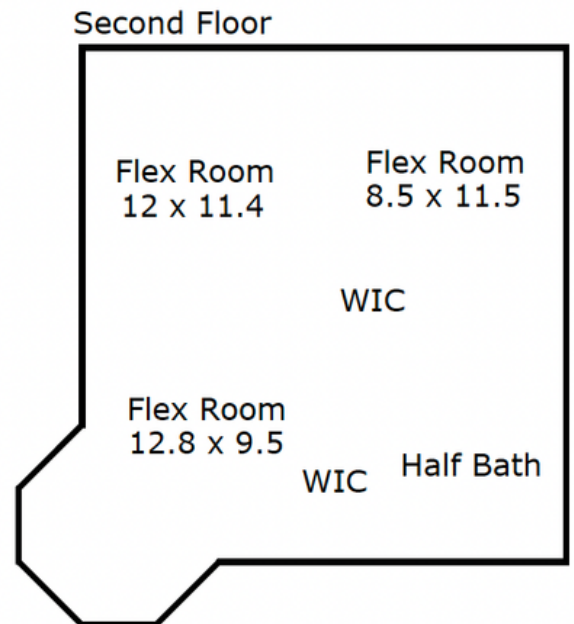
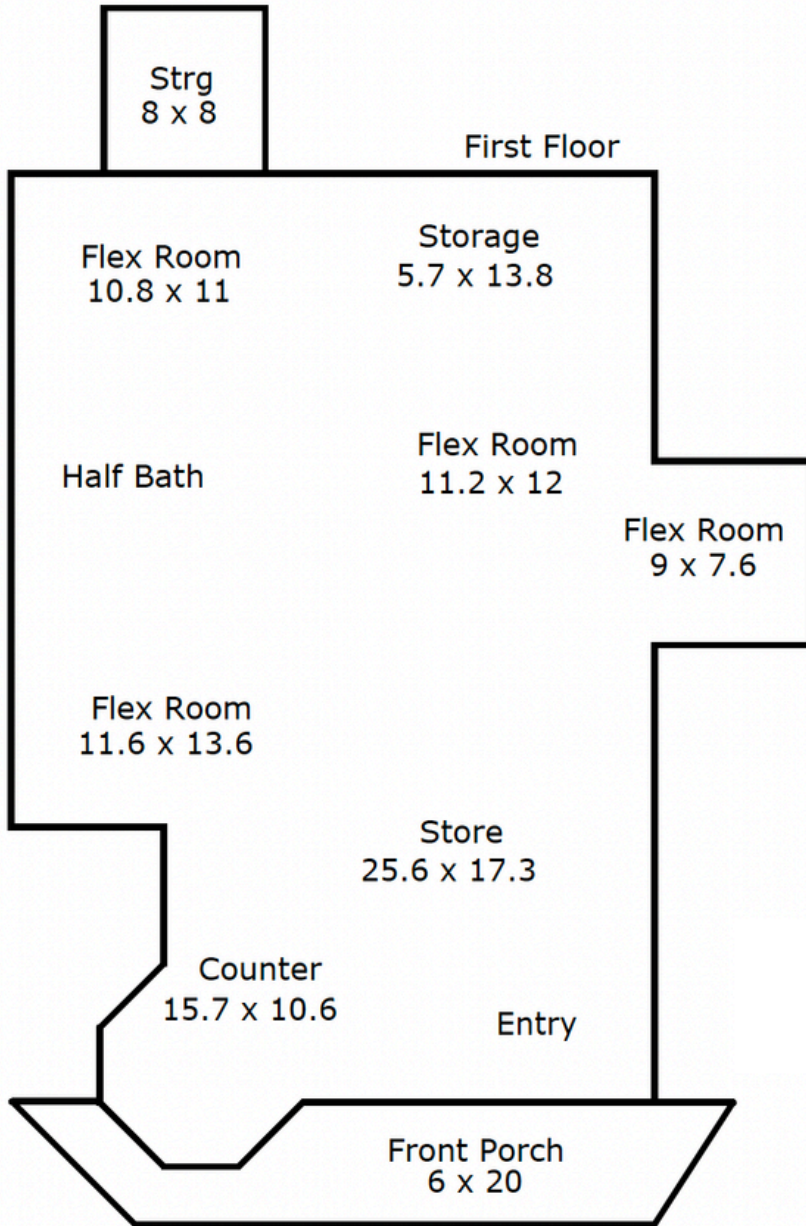
Robin Fleming
(919)215-5621
rfleming@flemingpropinc.com

Joel Fleming
(919)215-2624
joel@devereuxnc.com

For Lease 2,062 sf

7325 Knightdale Blvd
Knightdale, NC 27545

Floor Plan



Fleming Properties, Inc.

Staying the Course

Robin Fleming
(919)215-5621
rfleming@flemingpropinc.com

Joel Fleming
(919)215-2624
joel@devereuxnc.com

For Lease 2,062 sf

7325 Knightdale Blvd
Knightdale, NC 27545

Exterior Photos



Rear Entrance

Rear Parking



Fleming Properties, Inc.

Staying the Course

Robin Fleming
(919)215-5621
rfleming@flemingpropinc.com

Joel Fleming
(919)215-2624
joel@devereuxnc.com

For Lease 2,062 sf

7325 Knightdale Blvd
Knightdale, NC 27545

Interior Photos



Main Room

Front Window



Fleming Properties, Inc.

Staying the Course

Robin Fleming
(919)215-5621
rfleming@flemingpropinc.com

Joel Fleming
(919)215-2624
joel@devereuxnc.com

For Lease 2,062 sf

7325 Knightdale Blvd
Knightdale, NC 27545

Interior Photos



Upstairs Private

Downstairs Private



Fleming Properties, Inc.

Staying the Course

Robin Fleming
(919)215-5621
rfleming@flemingpropinc.com

Joel Fleming
(919)215-2624
joel@devereuxnc.com

For Lease 2,062 sf

7325 Knightdale Blvd
Knightdale, NC 27545

Interior Photos



Downstairs Bathroom

Downstairs Private



Fleming Properties, Inc.

Staying the Course

Robin Fleming
(919)215-5621
rflaming@flemingpropinc.com

Joel Fleming
(919)215-2624
joel@devereuxnc.com

For Lease 2,062 sf
7325 Knightdale Blvd
Knightdale, NC 27545

Exterior Photos



Aerial:
Facing Lowe's Home
Improvement

Aerial:
Facing Knightdale
Station Park



Fleming Properties, Inc.

Staying the Course

Robin Fleming
(919)215-5621
rfleming@flemingpropinc.com

Joel Fleming
(919)215-2624
joel@devereuxnc.com