

OFFICE SPACE FOR LEASE

400 MEMORIAL DRIVE EXT, SUITE 300, GREER

400 MEMORIAL DRIVE EXT. @ HWY 29, GREER

4,530+- SF OFFICE SUITE

**FREE
PARKING**



MULTIPLE PROPERTY OWNERS ARE LICENSED REAL ESTATE AGENTS



JUST OFF THE CORNER OF
MEMORIAL DRIVE EXT AND
WADE HAMPTON BLVD (HWY 29)

LEASE RATE: \$24/SF NNN

FOR MORE INFORMATION CONTACT
OWNER/AGENT CHUCK LANGSTON
AT 864-230-4302
clangston@langston-black.com

LANGSTON BLACK
REAL ESTATE, INC.

P.O. BOX 2167
GREER, S.C. 29652
BUS: 864-848-9070

415

www.langston-black.com



ENTRY AREA



SUITE 300



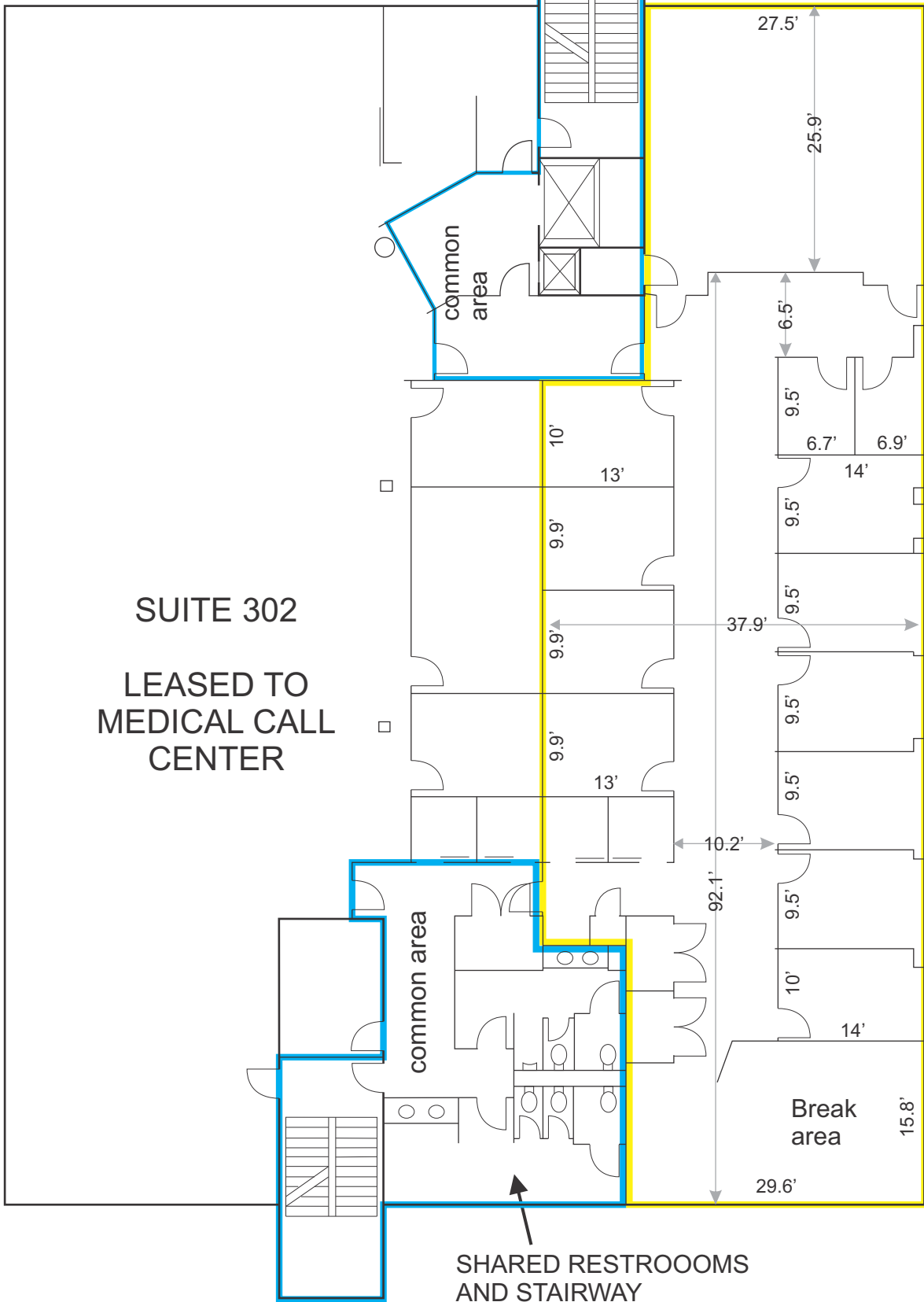
JUST BEHIND MCDONALDS WITH GREAT VISIBILITY FROM HWY 29



TAX MAP G018.00-05-007.05
ZONED CITY OF GREER C3

SHARED ENTRYWAY,
ELEVATOR, AND
STAIRWAY

AVAILABLE
SUITE 300



SUITE 302
LEASED TO
MEDICAL CALL
CENTER

SHARED RESTROOMS
AND STAIRWAY