



GROUND MATRIX



FOR LEASE

471

JESSIE STREET

San Francisco, CA 94103



Presented By:

Jake Levinson

415.786.4303
jake@groundmatrix.com
CalDRE #02021931

Clayton Demski

415.246.6999
clayton@groundmatrix.com
CalDRE #02117089

Alex Fee

209.981.7753
alex@groundmatrix.com
CalDRE #02018515

471

JESSIE STREET

San Francisco, CA 94103



GROUND MATRIX

FOR LEASE | OFFICE BUILDING

Property Summary



PROPERTY DESCRIPTION

Ground Matrix, Inc., as exclusive advisor, is pleased to offer 471 Jessie Street available for lease immediately. The building features two full floors of polished creative space, each equipped with private restrooms (+ shower), conference room, kitchenette, and abundant natural light. The building is tucked into the Jessie Street alley and provides users with an easy walk to Powell St. BART, 5th & Market Muni, and nearby bus lines. We welcome all uses and offer the available floors together or individually.

PROPERTY HIGHLIGHTS

- Newly Renovated Finishes
- Creative, Open Floor Plan
- Conference Room on Each Floor
- Private Restrooms
- Kitchenette
- Great Natural Light
- Parking Facilities in Walking Distance



Jake Levinson

415.786.4303
jake@groundmatrix.com
CalDRE #02021931

Clayton Demski

415.246.6999
clayton@groundmatrix.com
CalDRE #02117089

Alex Fee

209.981.7753
alex@groundmatrix.com
CalDRE #02018515

471

JESSIE STREET

San Francisco, CA 94103



GROUND MATRIX

FOR LEASE | OFFICE BUILDING

Executive Summary



Lease Rate

\$48.00 SF/YR

OFFERING SUMMARY

Building Size: 4,680 SF

Available SF: 1,550 - 3,100 SF

Term: Negotiable

LOCATION OVERVIEW

Jessie Street is centrally located in the eclectic South of Market neighborhood. Nearby amenities include the Yerba Buena Gardens, Powell Street BART, 5th & Market Muni, and a bevy of bars and restaurants in walking distance. Parking garages dot the surrounding area while Union Square sits a few blocks to the north, providing tenants with a commerce and entertainment hub within a 10-minute walk.



Jake Levinson

415.786.4303
jake@groundmatrix.com
CalDRE #02021931

Clayton Demski

415.246.6999
clayton@groundmatrix.com
CalDRE #02117089

Alex Fee

209.981.7753
alex@groundmatrix.com
CalDRE #02018515

471

JESSIE STREET

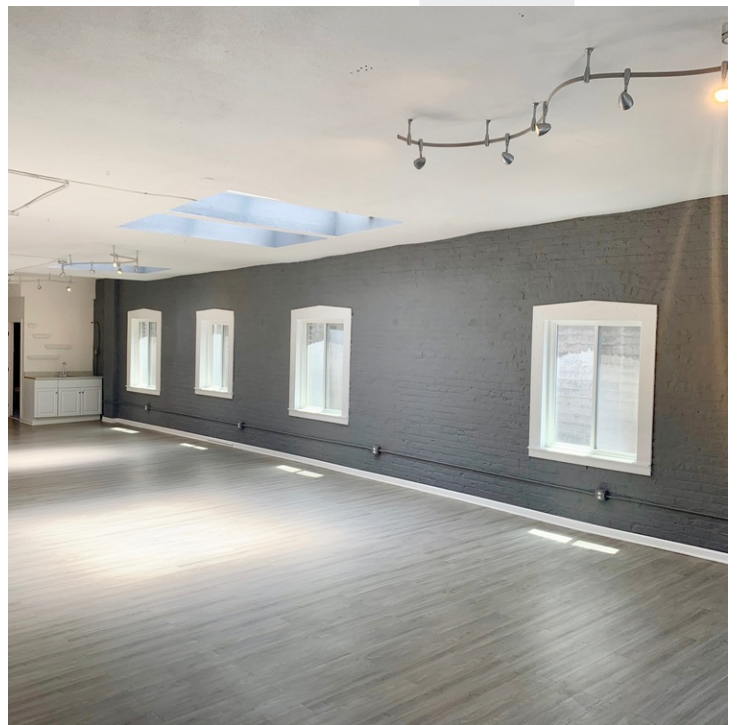
San Francisco, CA 94103



GROUND MATRIX

FOR LEASE | OFFICE BUILDING

[Additional Photos](#)



Jake Levinson
415.786.4303
jake@groundmatrix.com
CalDRE #02021931

Clayton Demski
415.246.6999
clayton@groundmatrix.com
CalDRE #02117089

Alex Fee
209.981.7753
alex@groundmatrix.com
CalDRE #02018515

471

JESSIE STREET

San Francisco, CA 94103



GROUND MATRIX

FOR LEASE | OFFICE BUILDING

Location Map



Jake Levinson
415.786.4303
jake@groundmatrix.com
CalDRE #02021931

Clayton Demski
415.246.6999
clayton@groundmatrix.com
CalDRE #02117089

Alex Fee
209.981.7753
alex@groundmatrix.com
CalDRE #02018515