

# JEFFERSON PLACE

350 N 9th Street | Boise, Idaho 83702

Unique Office & Retail Building  
in Boise's Downtown Core



OFFICE SUITES  
FOR LEASE

\$13-\$22 PSF FSEJ



**KARENA GILBERT, SIOR**  
Vice President  
karena.gilbert@cbre.com  
+1 208 488 3164

**MELANIE NIELSEN**  
Associate  
melanie.nielsen@cbre.com  
+1 208 678 6290

**KYLE UHLENKOTT**  
Senior Associate  
kyle.uhlenkott@cbre.com  
+1 208 507 0774



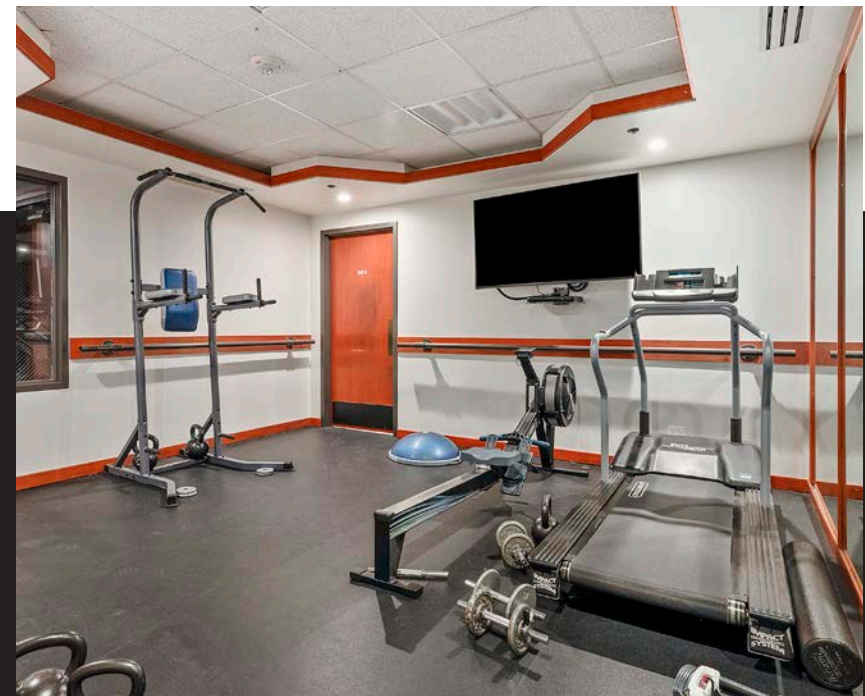


# JEFFERSON PLACE

A unique building with recognizable presence, perfectly accommodating small businesses.

With a strong local tenant mix in place including Idaho Forests Products Commission and Blue Cross Foundation, businesses can enjoy productive and peaceful workdays just steps from bustling 8th Street. Jefferson Place features an upscale lobby entrance, tenant directory, elevators, bike storage, fitness facility, full locker room with showers, and more.

	SUITE	AVAILABLE SF	ASKING RATE
Basement	B 10	±1,077 SF	\$13.00 PSF FSEJ
Basement	B 80	±1,825 SF	\$13.00 PSF FSEJ
Mezzanine	M 100	±2,328 SF	\$17.00 PSF FSEJ
4th Floor	Entire Floor	±10,851 SF	\$21.00 PSF FSEJ
4th Floor	400 & 404 *combined	±8,923 SF	\$22.00 PSF FSEJ
4th Floor	400*	±6,424 SF	\$22.00 PSF FSEJ
4th Floor	404*	±2,499 SF	\$22.00 PSF FSEJ
4th Floor	406	±1,928 SF	\$22.00 PSF FSEJ



# HISTORIC BUILDING

## HIGHLIGHTS

- NEW 2025 – energy efficient windows installed throughout building.
- Numerous improvements including tenant signage, modernized restrooms and locker rooms, new flooring throughout, upgraded lighting, and a beautifully distinctive exterior hand-painted mural.
- Suites feature a mix of individual offices and open space
- In building fitness center
- Panoramic views of downtown and the foothills
- Jefferson Place houses Graeber & Company Salon on the main level
- Adjacent public surface parking lot and surrounding parking garages within 2 blocks
- Professional on-site management and maintenance
- Walking distance to restaurants, entertainment, shopping, hotels, and the Capitol Building

## PROPERTY SUMMARY

<b>Building Type</b>	Historic Office/Retail
<b>Stories</b>	5
<b>Building SF</b>	±69,048 SF
<b>Leaseable SF</b>	±57,473 SF
<b>Rental Rate</b>	\$13 – \$22 PSF FSEJ
<b>SF Available</b>	±1,077 – ±10,851
<b>Parking</b>	Public (Surface lot next to building)
<b>Intersection</b>	9th Street & Jefferson Street
<b>Land APN</b>	R1022760260





RATE : \$13.00 PSF FSEJ

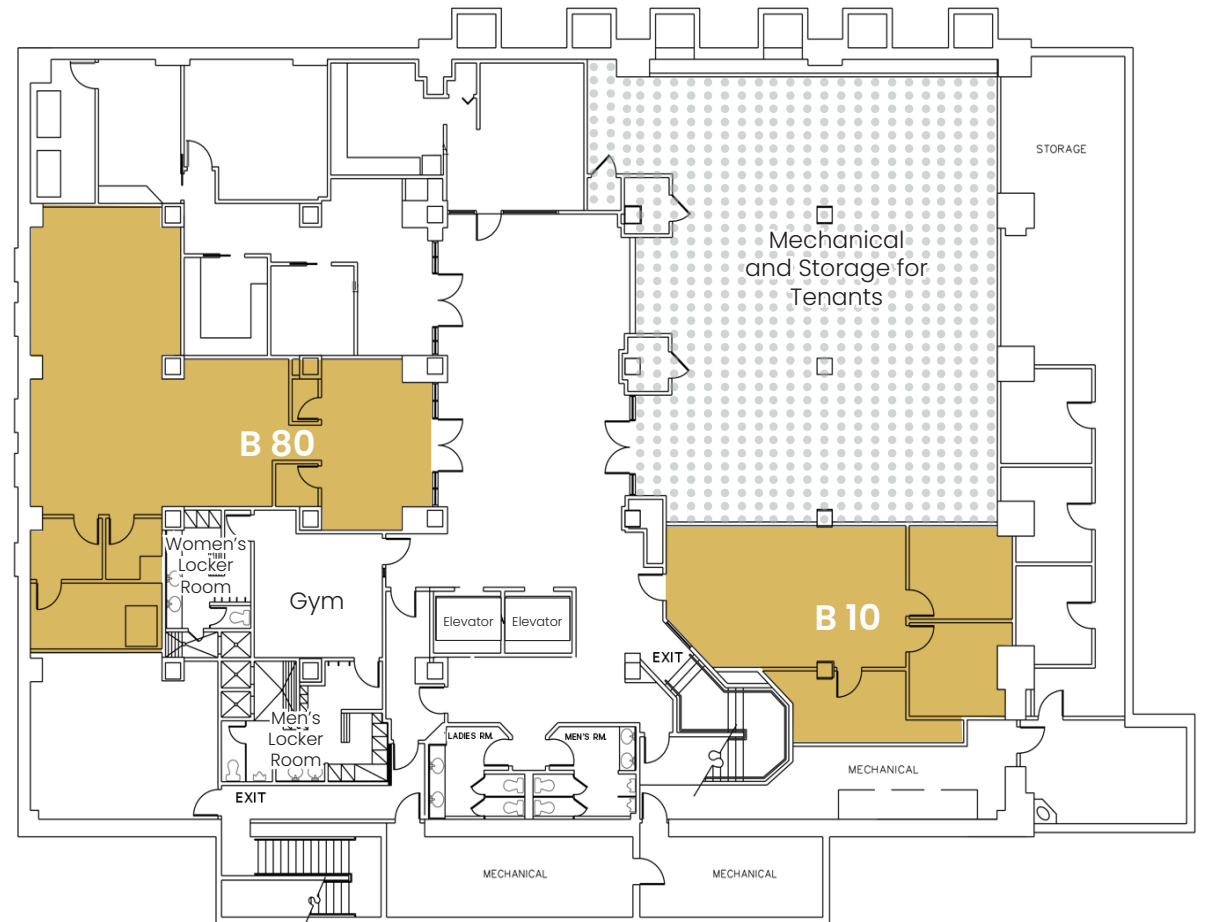
AVAILABLE SUITES:

B 10            ±1,077 SF

B 80            ±1,825 SF

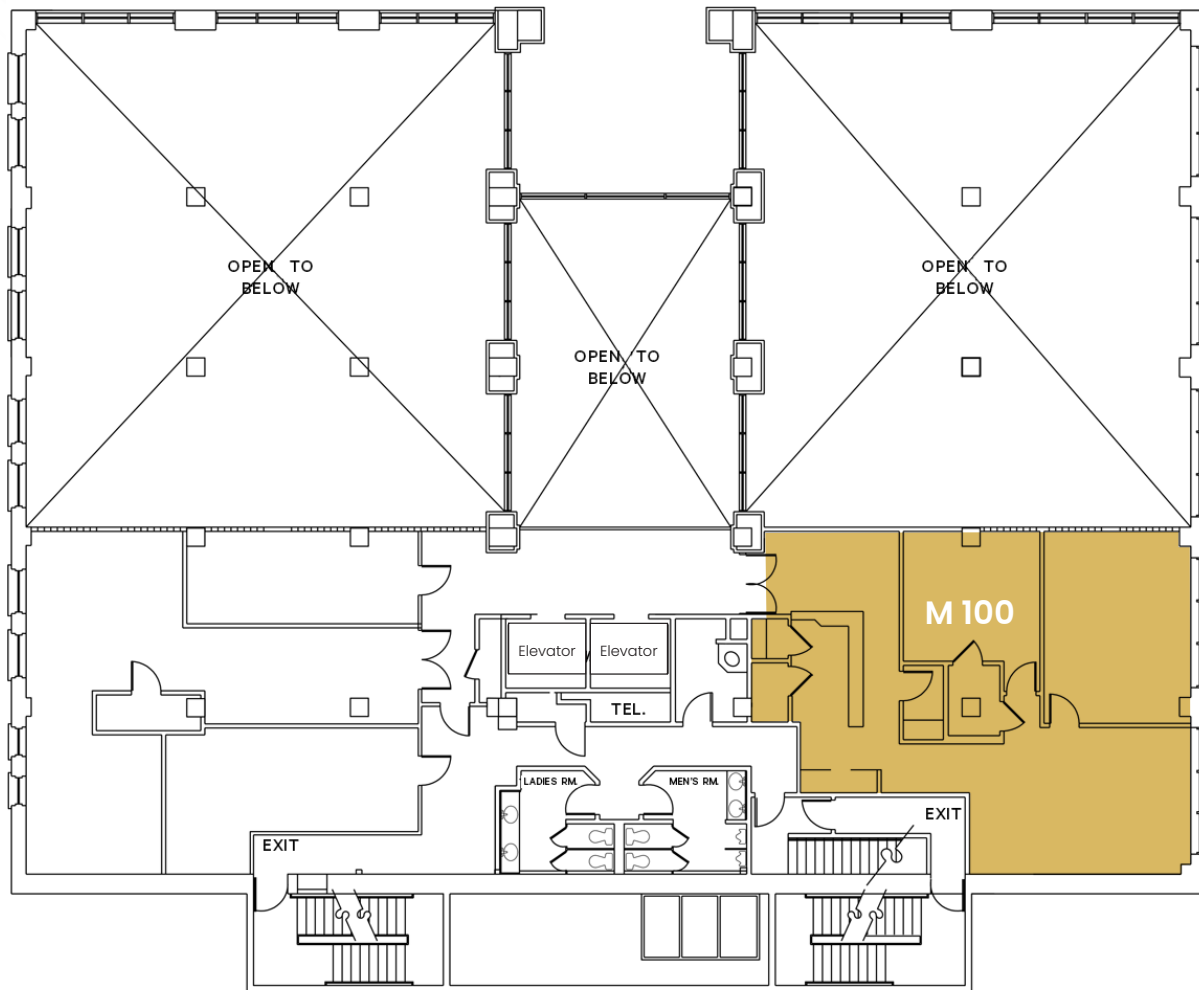


# BASEMENT FLOORPLAN



*Vacant with immediate occupancy available.  
Contact agents for showing instructions.*

# MEZZANINE FLOORPLAN



*Vacant with immediate occupancy available.  
Contact agents for showing instructions.*



**SUITE M 100**



**\$17.00 PSF FSEJ**

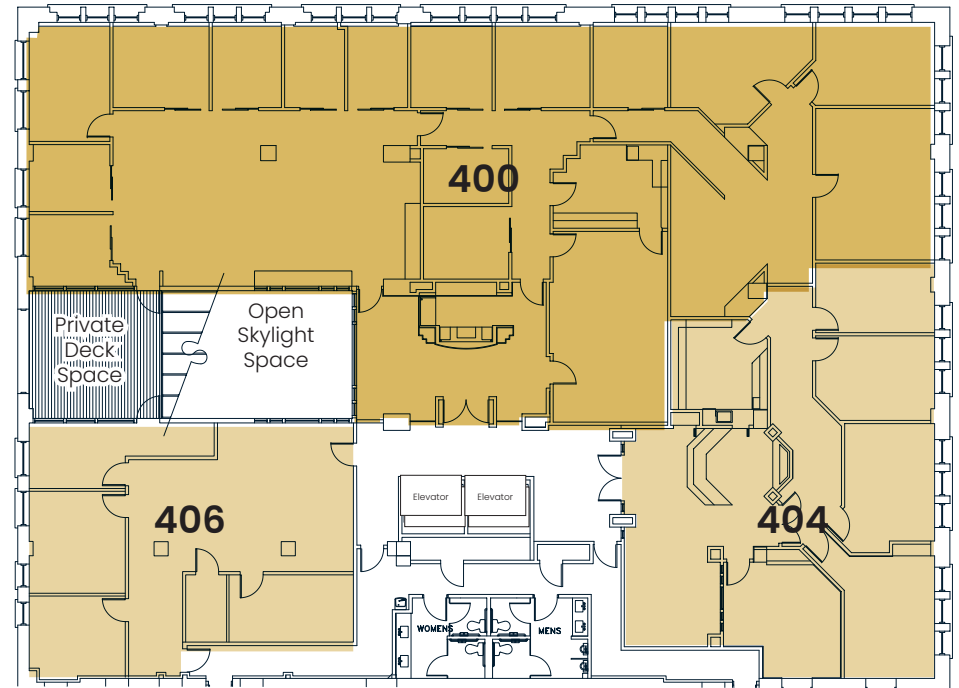


**±2,328 SF AVAILABLE**

# 4TH FLOOR HIGHLIGHTS

- Available: ±10,851 SF
- Entire 4th floor
- Rate\*: \$21.00 FSEJ  
\*rate for the entire 4th floor
- TI allowance available
- In building fitness center
- Exclusive deck space
- Window views facing the foothills and capitol building
- Key card access available exclusively to 4th floor for single user
- Ready for customized build-out and personalized layout
- Immediate availability - contact agents for showing instructions

## CURRENT FLOORPLAN



## SUITE 400 HIGHLIGHTS

- Available: ±6,424 SF
- Available Optional:  
±2,499 SF
- Rate: \$22.00 FSEJ
- Window views facing the foothills and capitol building
- Access to shared deck
- Includes 12 private offices, reception area, kitchenette, and open work space
- Immediate availability - contact agents for showing instructions

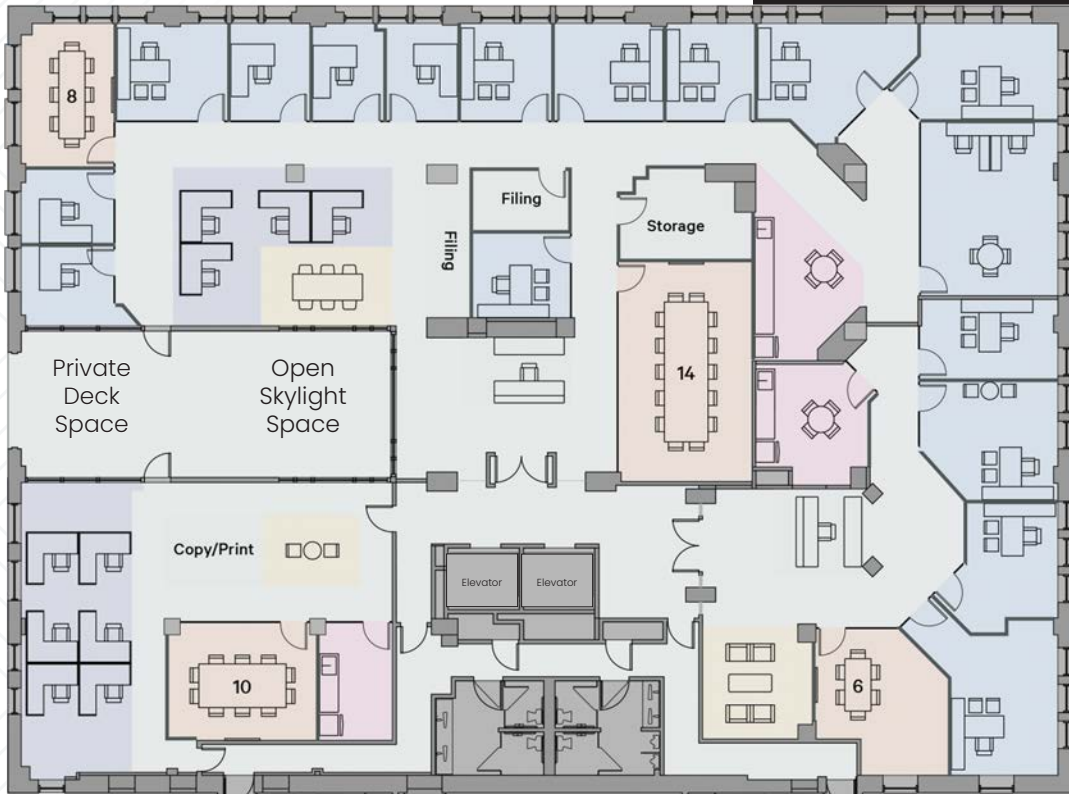
## SUITE 404 HIGHLIGHTS

- Available: ±2,499 SF
- Rate: \$22.00 FSEJ
- Reception, conference room, 5 private offices, and free kitchen/break room
- Immediate availability - contact agents for showing instructions

## SUITE 406 HIGHLIGHTS

- Available: ±1,928 SF
- Rate: \$22.00 FSEJ
- Access to shared deck
- Immediate availability - contact agents for showing instructions

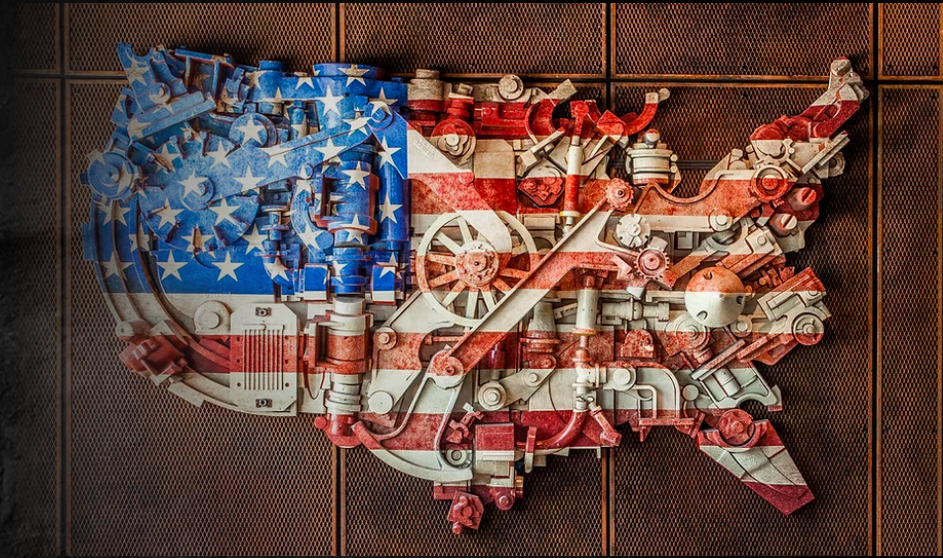
# CONCEPTUAL FLOORPLAN



# ABOUT HENDRICKS



From Beloit, Wisconsin and beyond, Hendricks Commercial Properties focuses on revitalizing historic properties and creating environments where businesses flourish, jobs are created and communities are transformed. Hendricks Commercial Properties identifies specific needs within each community and develops a produce that ties together history and modern luxury to become a destination that people want to be part of.



## LOCAL OWNERSHIP



370 SOUTH 8TH STREET  
BOISE, ID



1109 W MAIN STREET  
BOISE, ID



802 W BANNOCK STREET  
BOISE, ID



HOTEL RENEGADE  
COMING SOON

[Learn More About Hendricks Group](#)





## PROPERTY PHOTOS



# WHY BOISE

## HOW WE WORK

### *An Economy on the Rise*

There's no doubt about it: Boise is looking more desirable every day, enticing people from all over the world with its breathtaking natural surroundings, business opportunities and unparalleled quality of life. Over the past couple of decades, many have likened the area to Denver, citing high growth rates and an impressive 2020 population of more than 770,000 residents. These trends aren't unique to Boise, either; Idaho as a whole has capitalized on large amounts of net migration in the last several years. From 2010 to 2020, it was the second fastest growing state in the nation, reporting a 17.3% change in resident population.



## EMPLOYMENT

334,107

Employees

26,983

Businesses

2.7%

Residential Unemployment Rate

U.S. Bureau of Labor Statistics

## BOISE METRO GROWTH

**2nd** Fastest Growing Metro in the Country

We're outpacing **Phoenix, Raleigh, Las Vegas, & Charleston**

**2.5X** Rate of Seattle

**2X** Rate of Denver

BVEP, May 2021

Of the **20,291** new people in the boise metro, 16,684 were added on net from migration from other counties, states or countries.

That's 1 person every **31.5 Mins** due to net migration

## WORKFORCE

↑ 3.6%

Job Growth 2021

50.9%

projected job growth in the next 10 years

U.S. Census 2021

## LARGEST EMPLOYERS





# JEFFERSON PLACE

# JEFFERSON PLACE

350 N 9th Street | Boise, Idaho 83702



**FOR MORE INFORMATION, CONTACT:**

**KARENA GILBERT, SIOR**  
 Vice President  
[karena.gilbert@cbre.com](mailto:karena.gilbert@cbre.com)  
 +1 208 488 3164

**MELANIE NIELSEN**  
 Associate  
[melanie.nielsen@cbre.com](mailto:melanie.nielsen@cbre.com)  
 +1 208 678 6290

**KYLE UHLENKOTT**  
 Senior Associate  
[kyle.uhlenkott@cbre.com](mailto:kyle.uhlenkott@cbre.com)  
 +1 208 507 0774



© 2025 CBRE, Inc. All rights reserved. This information has been obtained from sources believed reliable, but has not been verified for accuracy or completeness. You should conduct a careful, independent investigation of the property and verify all information. Any reliance on this information is solely at your own risk. CBRE and the CBRE logo are service marks of CBRE, Inc. All other marks displayed on this document are the property of their respective owners, and the use of such logos does not imply any affiliation with or endorsement of CBRE. Photos herein are the property of their respective owners. Use of these images without the express written consent of the owner is prohibited.