

# SUITE 625

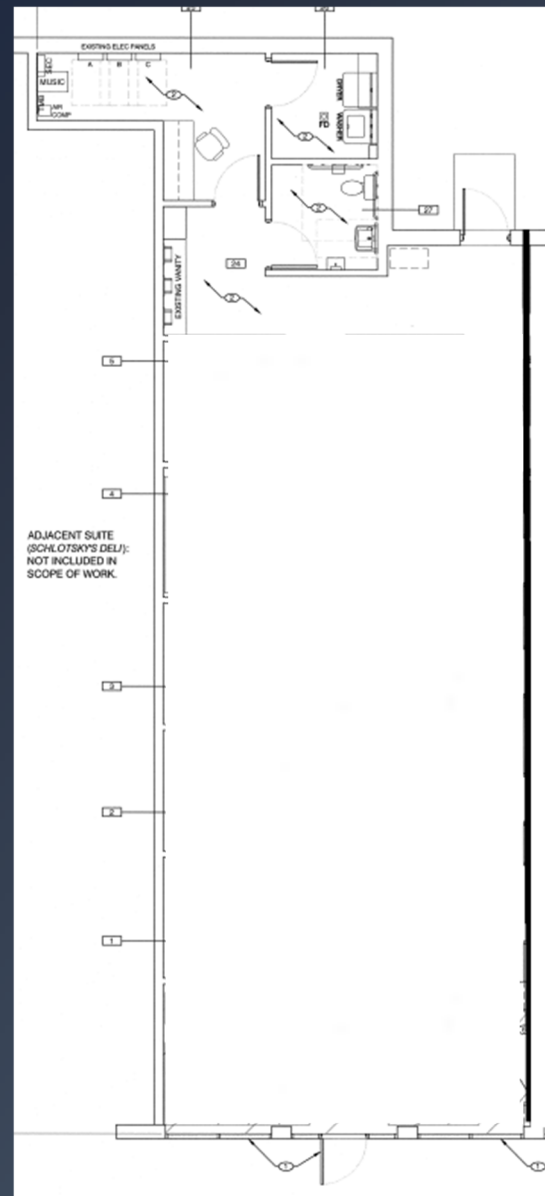
## Floor Plan

### PRICING SUMMARY:

Size: 1,750 SF  
Base Rent: \$36.00 PSF/yr.  
Triple Nets: \$8.89 PSF/yr.  
Total: \$6,546/mo.

### COMMENTS

- 3% annual base rent escalations



Phillip Carameros (832. 937.5900) [phillip@gordonpartners.com](mailto:phillip@gordonpartners.com)  
Jenny Nguyen (409.900.2060) [jenny@gordonpartners.com](mailto:jenny@gordonpartners.com)