

FOR LEASE

OFFICE CONDOMINIUMS
BUILDING



ALDEN PARK OFFICE CONDOMINIUM

475 SCHOOL ST STE 8, MARSHFIELD, MA 02050

KERRICK PIERCE

781.919.0800 X710

kpierce@ellisrealtyadvisors.com

For More Information



ALDEN PARK OFFICE CONDOMINIUM

PROPERTY DESCRIPTION

Well-positioned 1,681± SF office condominium located in a well-maintained, professionally managed office complex. The property offers ample on-site parking, low condominium fees, excellent visibility and accessibility along Route 139, and convenient proximity to Route 3, nearby retail, and surrounding amenities. Purchase options available.

PROPERTY HIGHLIGHTS

- 1,681 SF Townhome Style Office Condo
- New Roof as of 2025
- Professional Office Space Ideal for Therapists, Attorneys, Counselors, Accountants, etc.
- Several Private Offices, Bullpen Area, Reception, and Conference Room
- First Floor Private Entry
- Restroom on Each Floor
- Purchase Options Available

OFFERING SUMMARY

Lease Rate:	\$18 SF/yr (MG)
Number of Units:	1
Available SF:	1,681 SF
Building Size:	1,681 SF

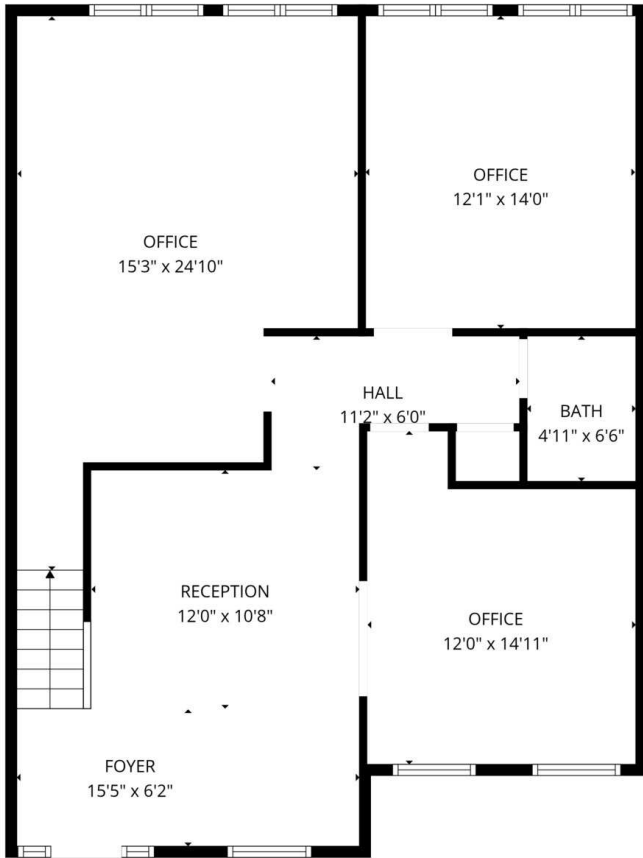
DEMOGRAPHICS	0.3 MILES	0.5 MILES	1 MILE
Total Households	237	437	1,424
Total Population	566	1,046	3,406
Average HH Income	\$135,562	\$138,159	\$144,318



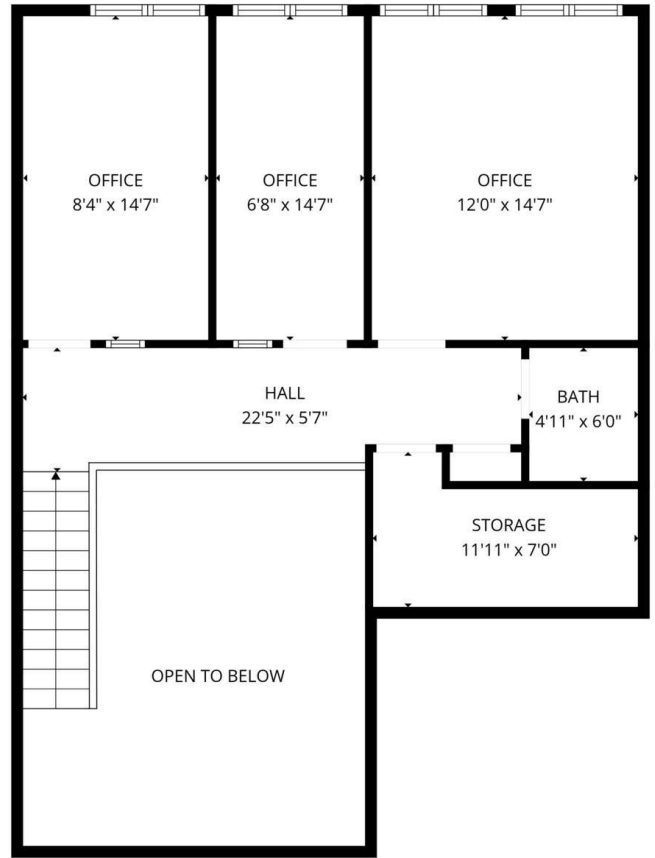
KERRICK PIERCE

781.919.0800 x710
kpierce@ellisrealtyadvisors.com

ALDEN PARK OFFICE CONDOMINIUM



1st floor

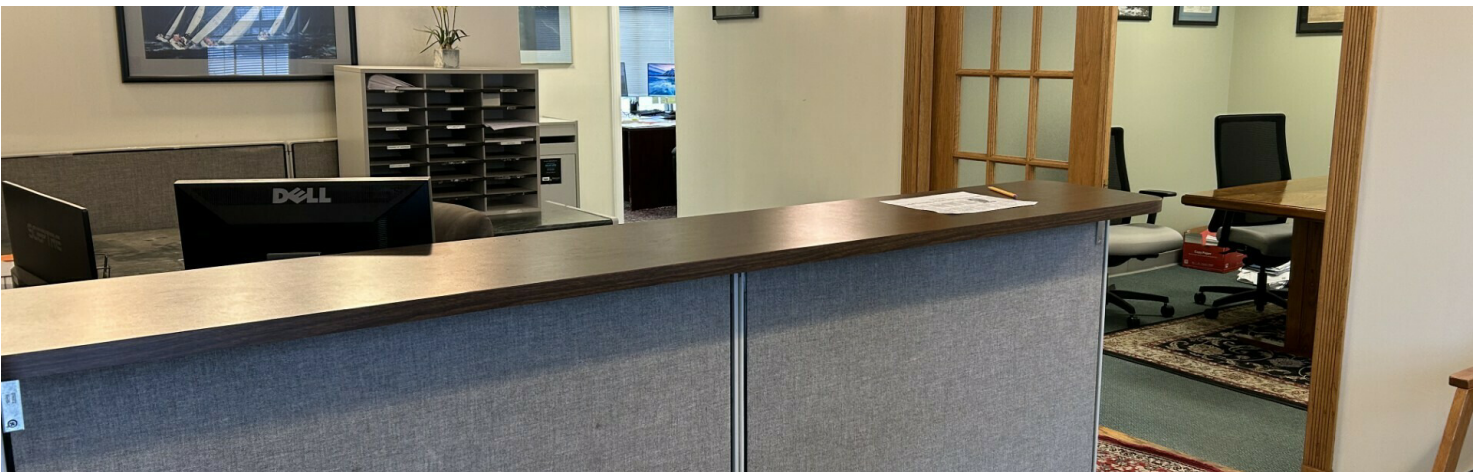


2nd floor

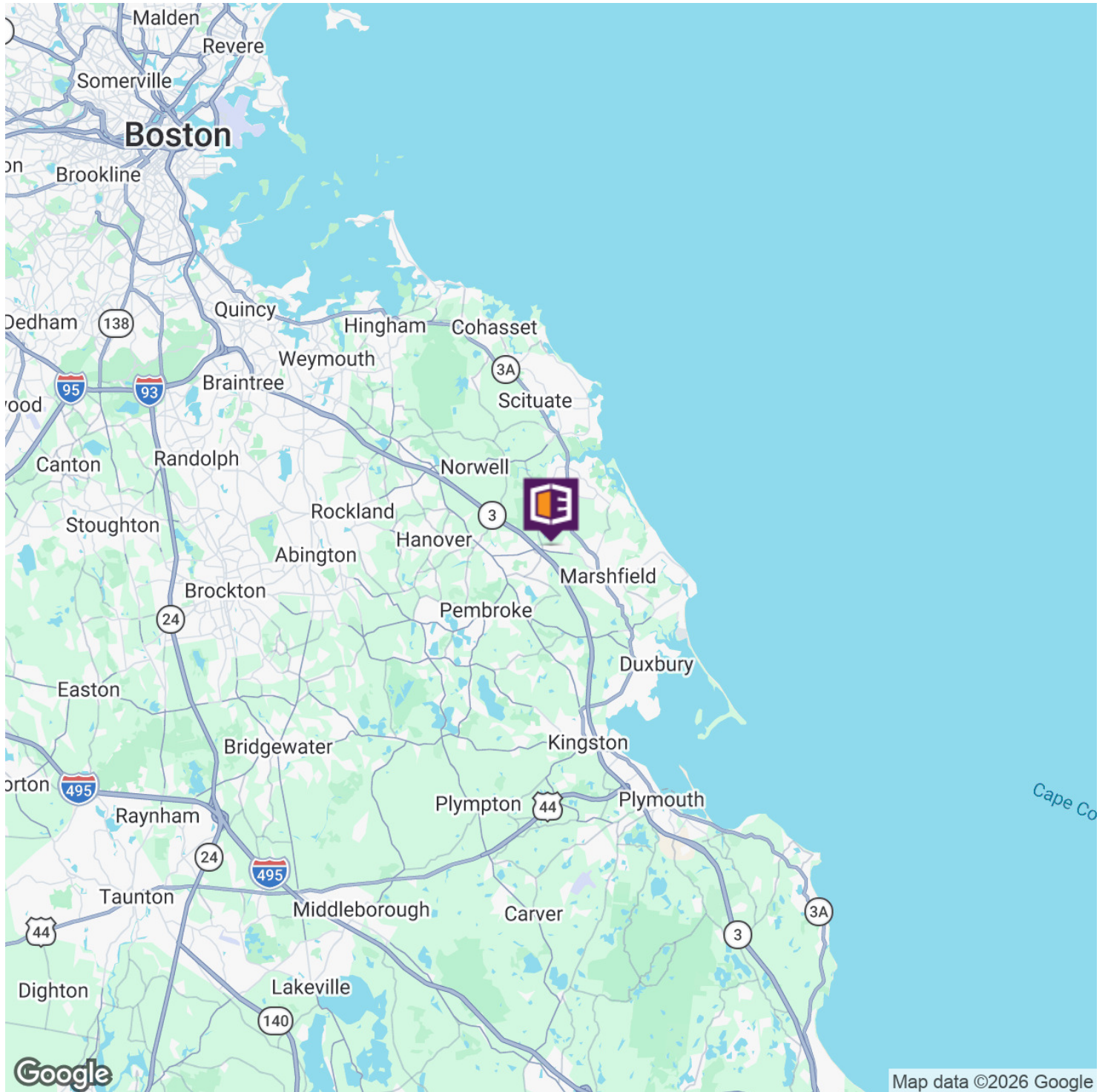
FLOOR PLAN CREATED BY CUBICASA APP. MEASUREMENTS DEEMED HIGHLY RELIABLE BUT NOT GUARANTEED.

ADDITIONAL PHOTOS

ALDEN PARK OFFICE CONDOMINIUM



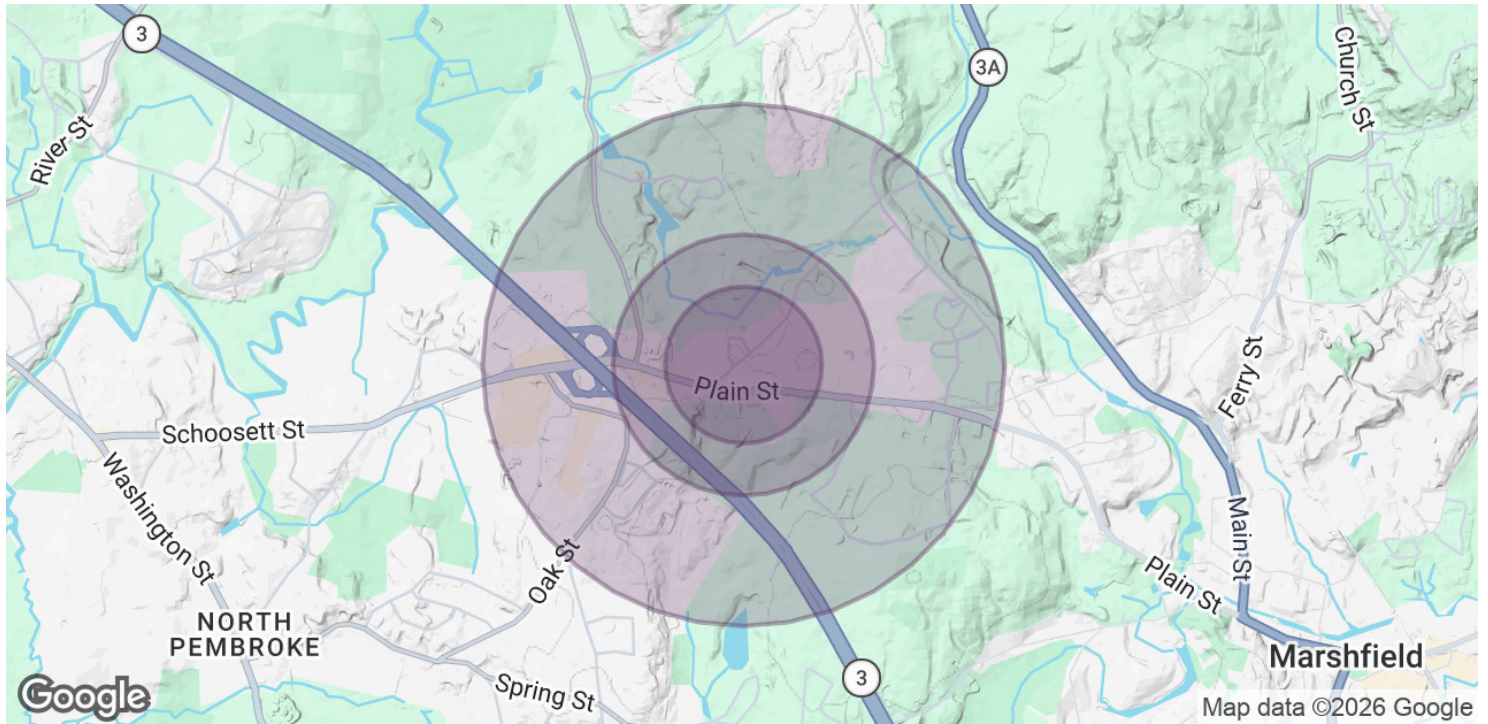
ALDEN PARK OFFICE CONDOMINIUM



KERRICK PIERCE

781.919.0800 x710
kpierce@ellisrealtyadvisors.com

ALDEN PARK OFFICE CONDOMINIUM



POPULATION	0.3 MILES	0.5 MILES	1 MILE
Total Population	566	1,046	3,406
Average Age	42	42	43
Average Age (Male)	41	41	42
Average Age (Female)	43	43	44

HOUSEHOLDS & INCOME	0.3 MILES	0.5 MILES	1 MILE
Total Households	237	437	1,424
# of Persons per HH	2.4	2.4	2.4
Average HH Income	\$135,562	\$138,159	\$144,318
Average House Value	\$635,890	\$645,370	\$680,781

2020 American Community Survey (ACS)