



**SALE**

# Kona Medical Partners

**75-137 HUALALAI ROAD**

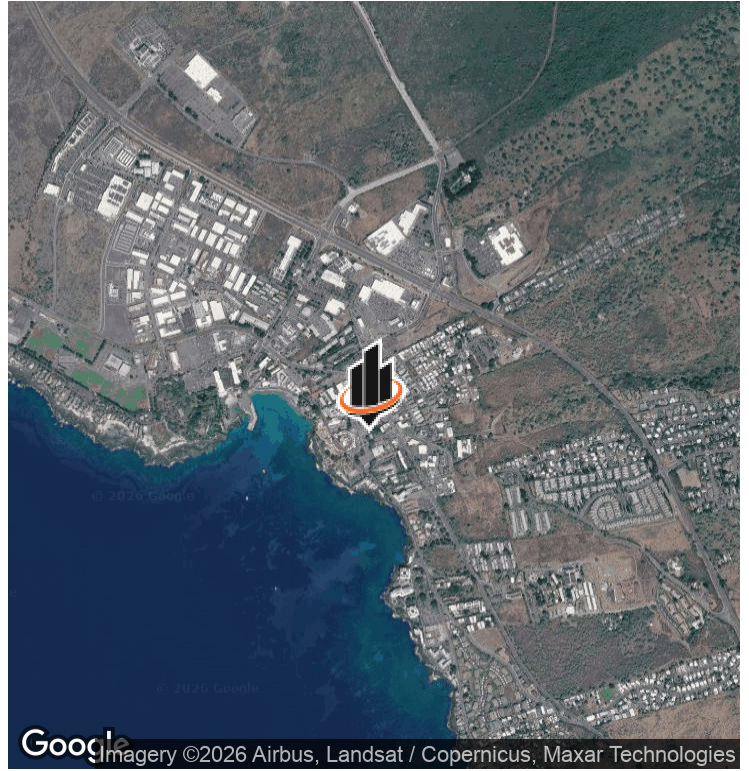
Kailua Kona, HI 96740

**PRESENTED BY:**

**GREGORY OGIN**  
O: 808.329.6446  
gogin@svn.com  
HI #RB-16053

**SUSIE SCRIBNER**  
O: 805.403.0301  
susie.scribner@svn.com  
Hawaii #RS-84227

## PROPERTY SUMMARY



## OFFERING SUMMARY

<b>SALE PRICE:</b>	\$2,700,000
<b>LOT SIZE:</b>	33,118 SF
<b>BUILDING SIZE:</b>	5,400 SF

## PROPERTY DESCRIPTION

Introducing an exceptional investment opportunity in the center of Kailua Kona. Boasting a generous 5,400 SF of office space, this well placed property offers prime commercial potential in a highly desirable locale. With 100% occupancy as a medical office, this building presents a compelling opportunity for an owner user or investor as the current medical operation transitions to retirement. Built in 1956 and renovated in 1976, its long-standing history and updates make it a standout choice. Zoned V-.75, this property provides a flexible framework for various business ventures. Don't miss your chance to acquire this established commercial asset in the heart of the Hawaii County market.

## PROPERTY HIGHLIGHTS

- -Prime commercial opportunity centrally located in the heart of Kailua Kona
- -33,118 square feet of fee simple land with a 5400 square feet two-story building
- -Zoned V-.75

**GREGORY OGIN**    **SUSIE SCRIBNER**  
O: 808.329.6446    O: 805.403.0301  
gogin@svn.com    susie.scribner@svn.com  
HI #RB-16053    Hawaii #RS-84227

## ADDITIONAL PHOTOS



**GREGORY OGIN**

O: 808.329.6446

gogin@svn.com

HI #RB-16053

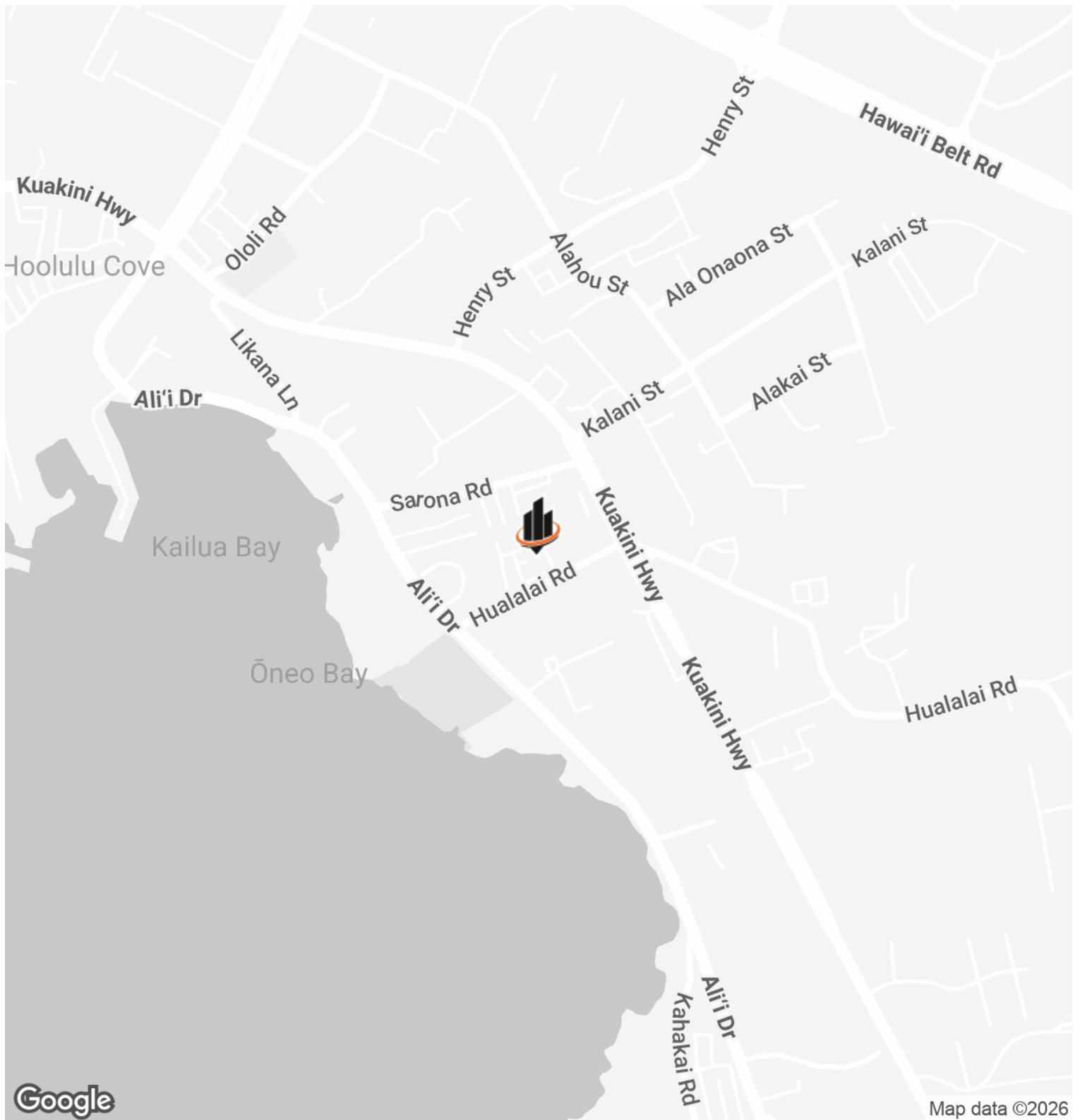
**SUSIE SCRIBNER**

O: 805.403.0301

susie.scribner@svn.com

Hawaii #RS-84227

# LOCATION MAP



**GREGORY OGIN**

O: 808.329.6446

gogin@svn.com

HI #RB-16053

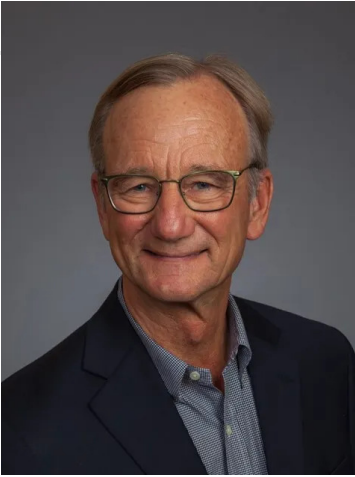
**SUSIE SCRIBNER**

O: 805.403.0301

susie.scribner@svn.com

Hawaii #RS-84227

## MEET THE TEAM



### GREGORY OGIN

Principal & Managing Director

**Direct:** 808.329.6446

**Cell:** 808.987.6446

gogin@svn.com

HI #RB-16053



### SUSIE SCRIBNER

Associate Advisor

**Direct:** 805.403.0301

**Cell:** 805.403.0301

susie.scribner@svn.com

Hawaii #RS-84227

#### GREGORY OGIN

O: 808.329.6446

gogin@svn.com

HI #RB-16053

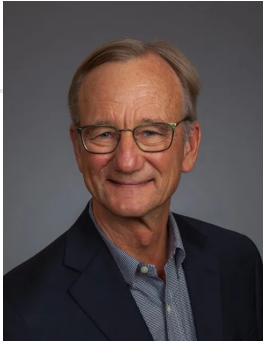
#### SUSIE SCRIBNER

O: 805.403.0301

susie.scribner@svn.com

Hawaii #RS-84227

## ADVISOR BIO 1



### GREGORY OGIN

Principal & Managing Director

[gogin@svn.com](mailto:gogin@svn.com)

Direct: **808.329.6446** | Cell: **808.987.6446**

HI #RB-16053

### PROFESSIONAL BACKGROUND

Gregory G. Ogin, CCIM, CPM, serves as Principal and Managing Director of SVN | GO Commercial, a division of GO Commercial, LLC. Since 1996, he has brought the commercial division of the former Clark Realty Corporation from three buildings in Kailua-Kona to over 700,000 square feet on the island of Hawaii.

Greg has managed properties since 1981, when he supervised and managed five resort stores and a 10,000 square foot resort department store for Liberty House of Hawaii Island. He was then appointed by the Mayor as Deputy Managing Director of the County of Hawaii, where he was in charge of County Operations in West Hawaii. Greg later owned a small, independent, commercial real estate firm which started as a division of Gerry Rott and Associates.

Greg's numerous activities include serving on the Board of Hawaii Island United Way, Lai Opua 2020, Kona Family YMCA and Hawaii Disciplinary Board (Hawaii BAR). He serves as President of Amfac Community Council, Rotary Club - Kailua-Kona, Kona Kohala Chamber of Commerce, past-President of Kauai Road Runners, and founding President of Children's Advocacy Center. Greg also chairs the Hokulia Parks and Cultural Services Association, Kona Community Development Plan, and Kailua Village Improvement Plan.

### EDUCATION

North Hennepin State University  
University of Hawaii

### MEMBERSHIPS

CCIM, CPM

**SVN | GO Commercial**  
75-5722 Kuakini Highway Suite 214  
Kailua Kona, HI 96740  
808.329.6446

<b>GREGORY OGIN</b>	<b>SUSIE SCRIBNER</b>
O: 808.329.6446	O: 805.403.0301
<a href="mailto:gogin@svn.com">gogin@svn.com</a>	<a href="mailto:susie.scribner@svn.com">susie.scribner@svn.com</a>
HI #RB-16053	Hawaii #RS-84227