



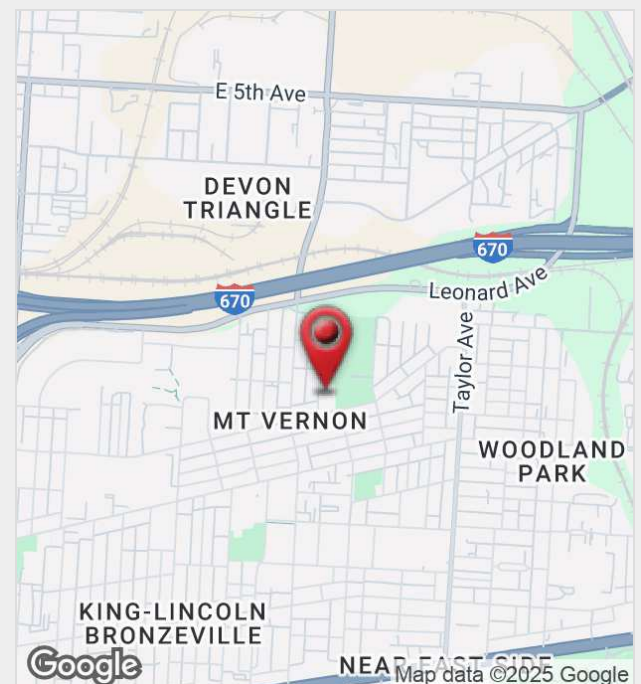
1330 Atcheson St

Columbus, Ohio 43203

Property Features

- 14,152 SF Turnkey Education Facility
- Ideal Location for Charter Schools, Private Academies or Specialized Learning Center
- Fully Renovated in 2020
- Available Immediately
- Formerly Occupied by Valor Academy of Ohio
- Columbus Public Bussing Available
- Adjacent to Saunders Park and Close Proximity to Downtown Columbus

Sale/Lease Pricing: Contact Broker For Pricing



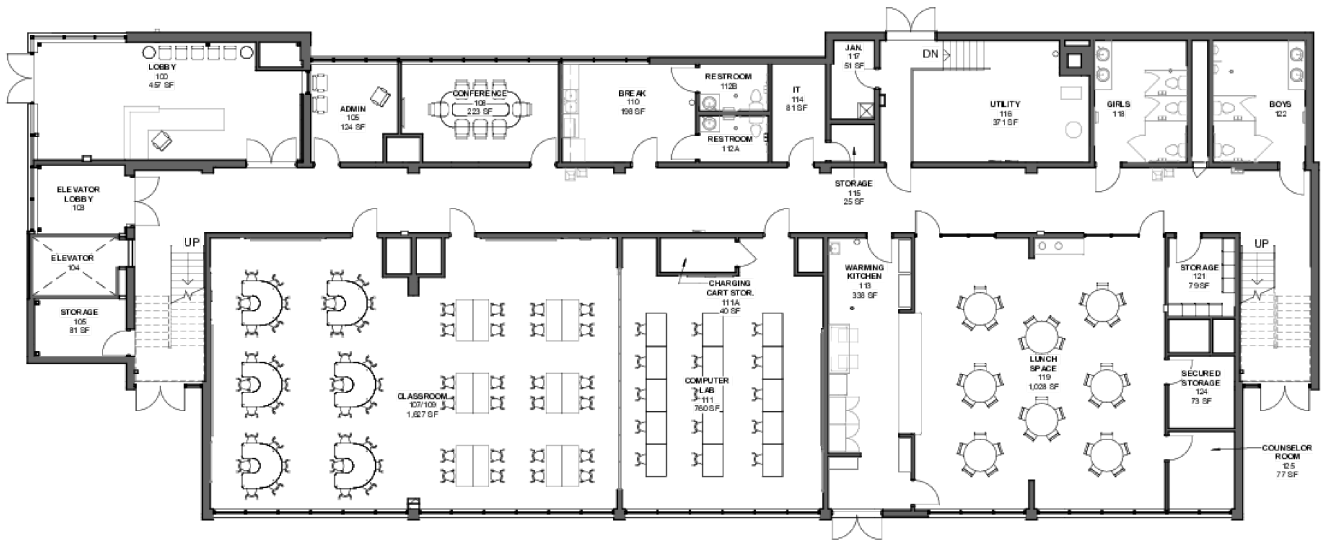
For more information:

Peter Griffith

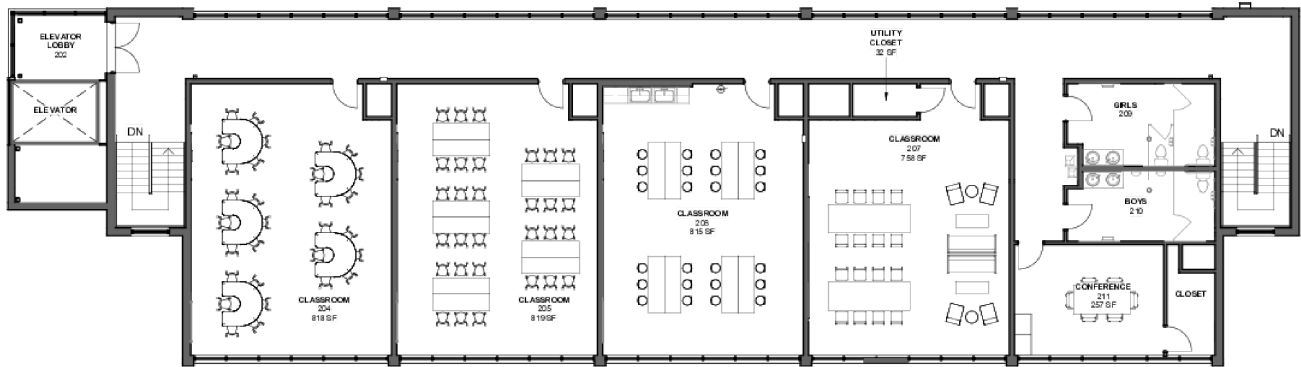
614 629 5247 • pgriffith@ohioequities.com



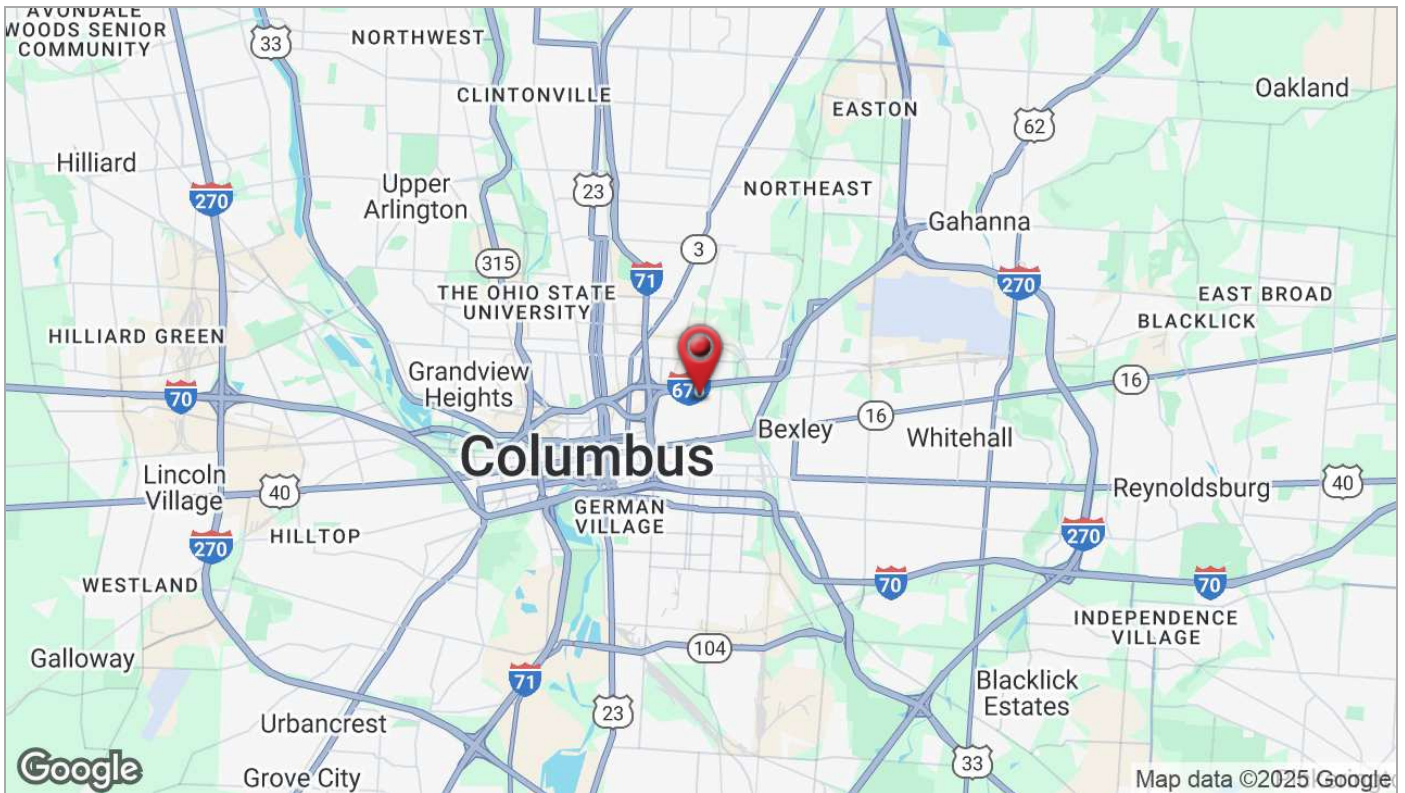
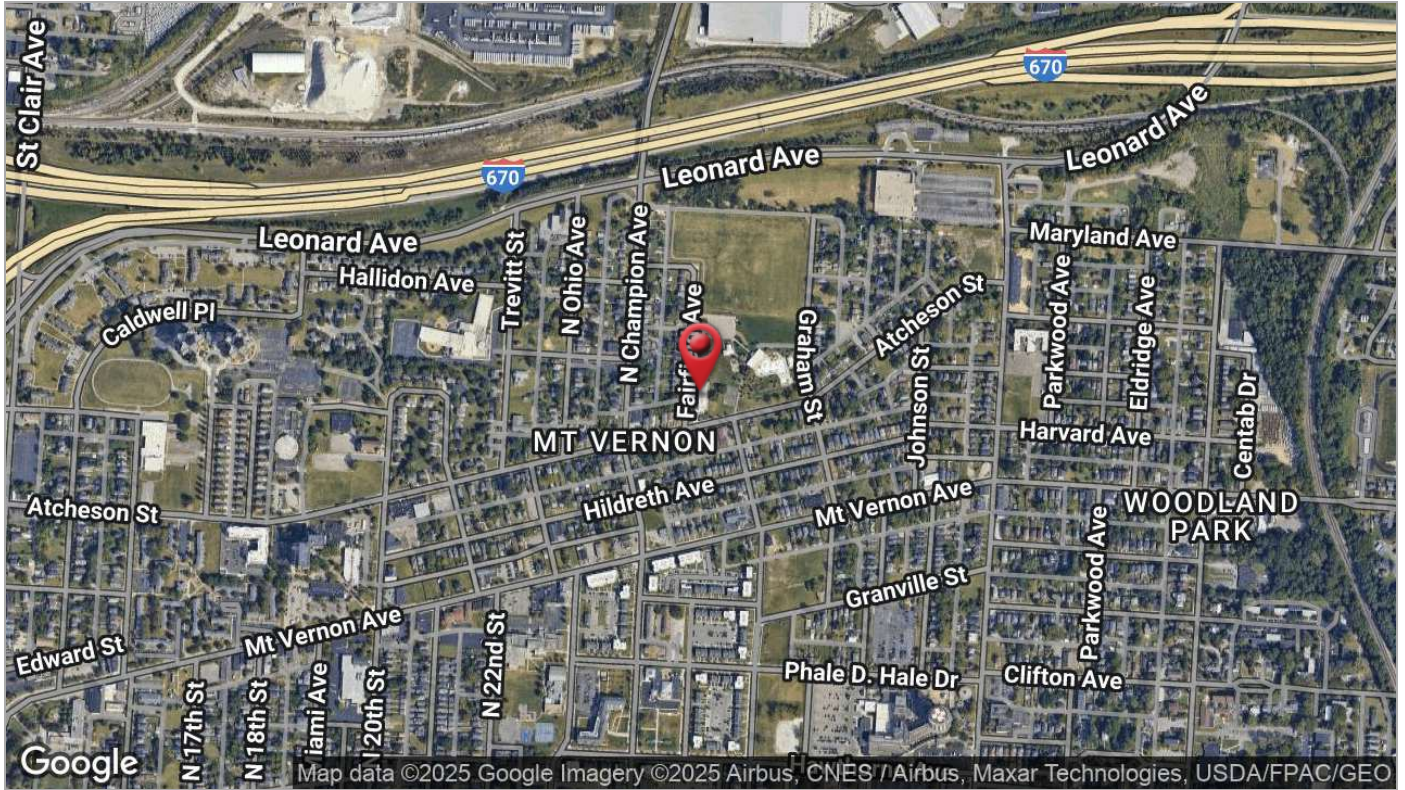


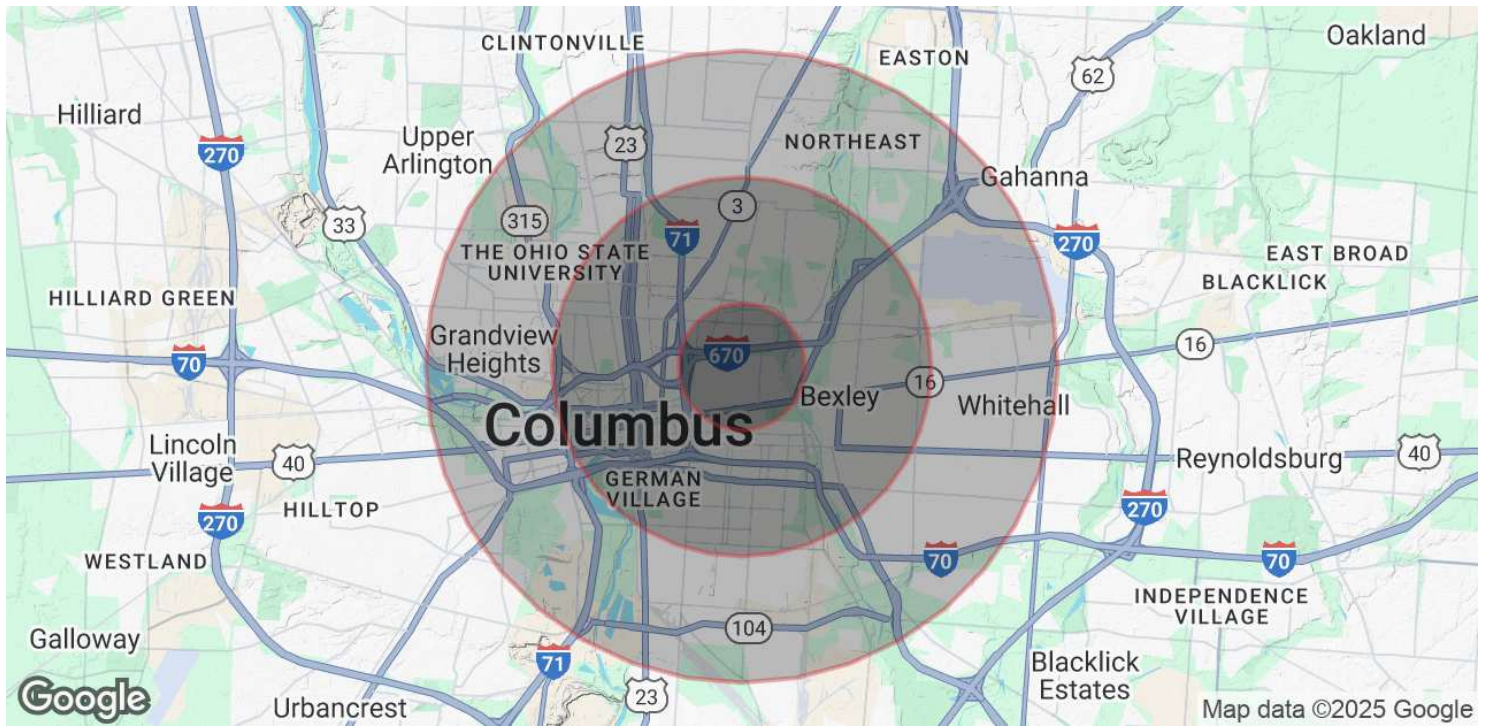


1 PLAN FIRST FLOOR
 3/32" = 1'-0"
 0 12' 18' 24' 30'



1 PLAN SECOND FLOOR
 3/32" = 1'-0"
 0 12' 18' 24' 30'





POPULATION

	1 MILE	3 MILES	5 MILES
Total Population	12,883	161,242	338,882
Average Age	36	35	36
Average Age (Male)	36	34	35
Average Age (Female)	37	35	36

HOUSEHOLDS & INCOME

	1 MILE	3 MILES	5 MILES
Total Households	6,140	71,183	146,930
# of Persons per HH	2.1	2.3	2.3
Average HH Income	\$60,858	\$79,131	\$77,424
Average House Value	\$304,431	\$365,461	\$308,644

Demographics data derived from AlphaMap