

# Peakview IV

1221 West Mineral Ave, Littleton, CO 80120



## PROPERTY HIGHLIGHTS

- Great Location with Easy Access to Littleton, Highlands Ranch, Ken Caryl, Englewood, Sterling Ranch and Greenwood Village
- Close Proximity to Multiple Medical Facilities, Including Littleton, UCHealth, and Children's Hospital
- Private Exterior Entrance Available
- Flexible Leasing Options from 3,000 - 6,368 SF
- Near Restaurants and Shopping



**For leasing information please contact:**

Matt Smith | 303.996.8460  
msmith@premisescommercial.com

Michelle Gertzman | 720.743.6399  
mgertzman@premisescommercial.com

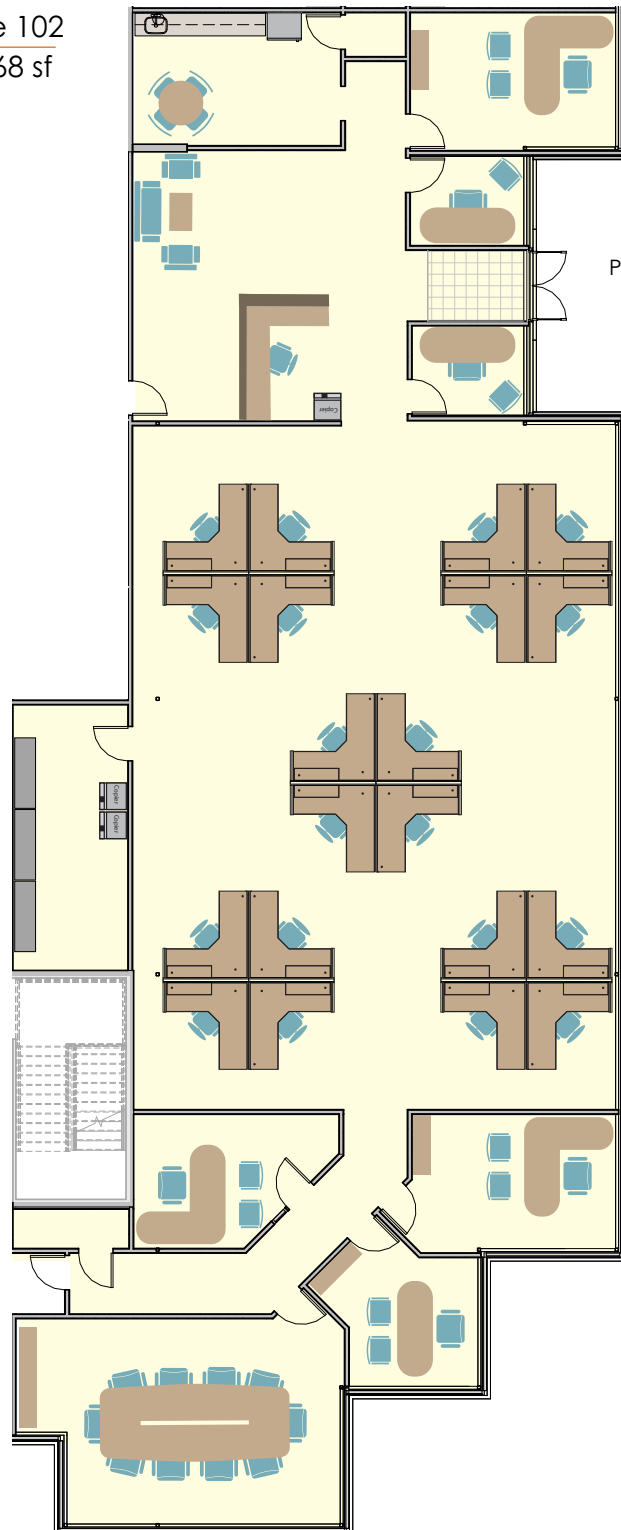
**PREMISES**  
PREMISES COMMERCIAL REAL ESTATE LLC  
WWW.PREMISESCOMMERCIAL.COM

# Peakview IV

1221 West Mineral Ave, Littleton, CO 80120

AVAILABLE SUITE

Suite 102  
6,368 sf



Private Exterior  
Entrance

First Floor



[WWW.PREMISESCOMMERCIAL.COM](http://WWW.PREMISESCOMMERCIAL.COM)

The information contained herein, while not guaranteed, has been secured from sources we believe to be reliable. Different brokerage relationships are available which include Seller/Landlord Agency, Buyer/Tenant Agency and Transaction Broker. Premises Commercial Real Estate, LLC is acting in this capacity as Landlord's/Sublessor's Agent, unless otherwise agreed, and owes its fiduciary allegiance to Landlord/Sublessor as defined by Colorado Real Estate Commission.