



FOR LEASE | MEDICAL SPACE

LAKESIDE ONE PROFESSIONAL CENTER

16909 LAKESIDE HILLS CT. | OMAHA NE

Healthpeak® | DOC LISTED NYSE

 PJ MORGAN  
REAL ESTATE

*Information furnished is from sources deemed reliable, but is not guaranteed by PJ Morgan Real Estate, or its agents and is subject to change, corrections, errors, omissions, prior sales or withdrawal, without notice.*



## PROPERTY DETAILS

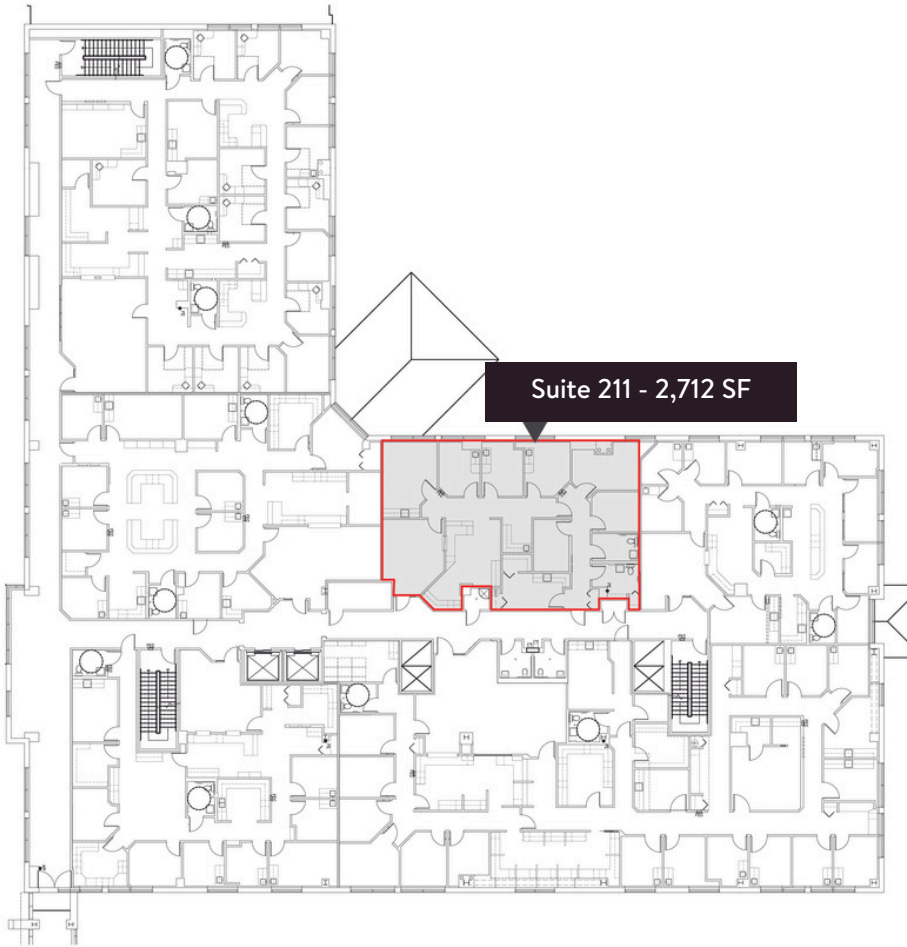
Lease Rate	Call for Rate
Year Built	2005
Year Renovated	2016

## AVAILABLE

Suite 211	2,712 SF
Suite 410	3,646 SF
Suite 411	2,299 SF
Combine Suite 410 + 411	6,645 SF

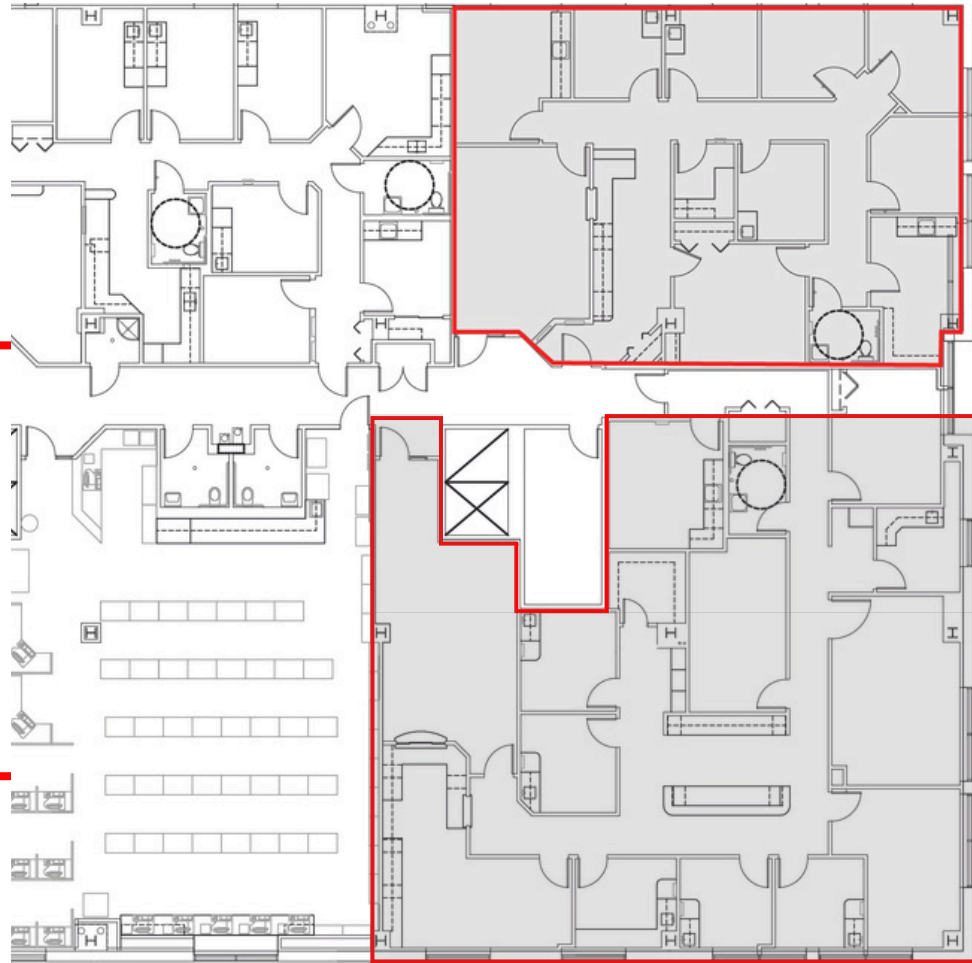
## DESCRIPTION

This 97,262 SF four-story outpatient medical building is conveniently located on the CHI Health Lakeside campus; directly connected to the hospital. Generous surface parking is available with a first-floor pharmacy and complimentary WiFi in the lobby. Available suites include a 2,299 SF move-in ready suite, just recently remodeled. The building is offered at a highly competitive rate and is within easy walking or driving distance to plenty of retail and restaurant options. Locally and professionally managed by the owner.



# FLOOR PLAN

SUITE 411 - 2,299 SF



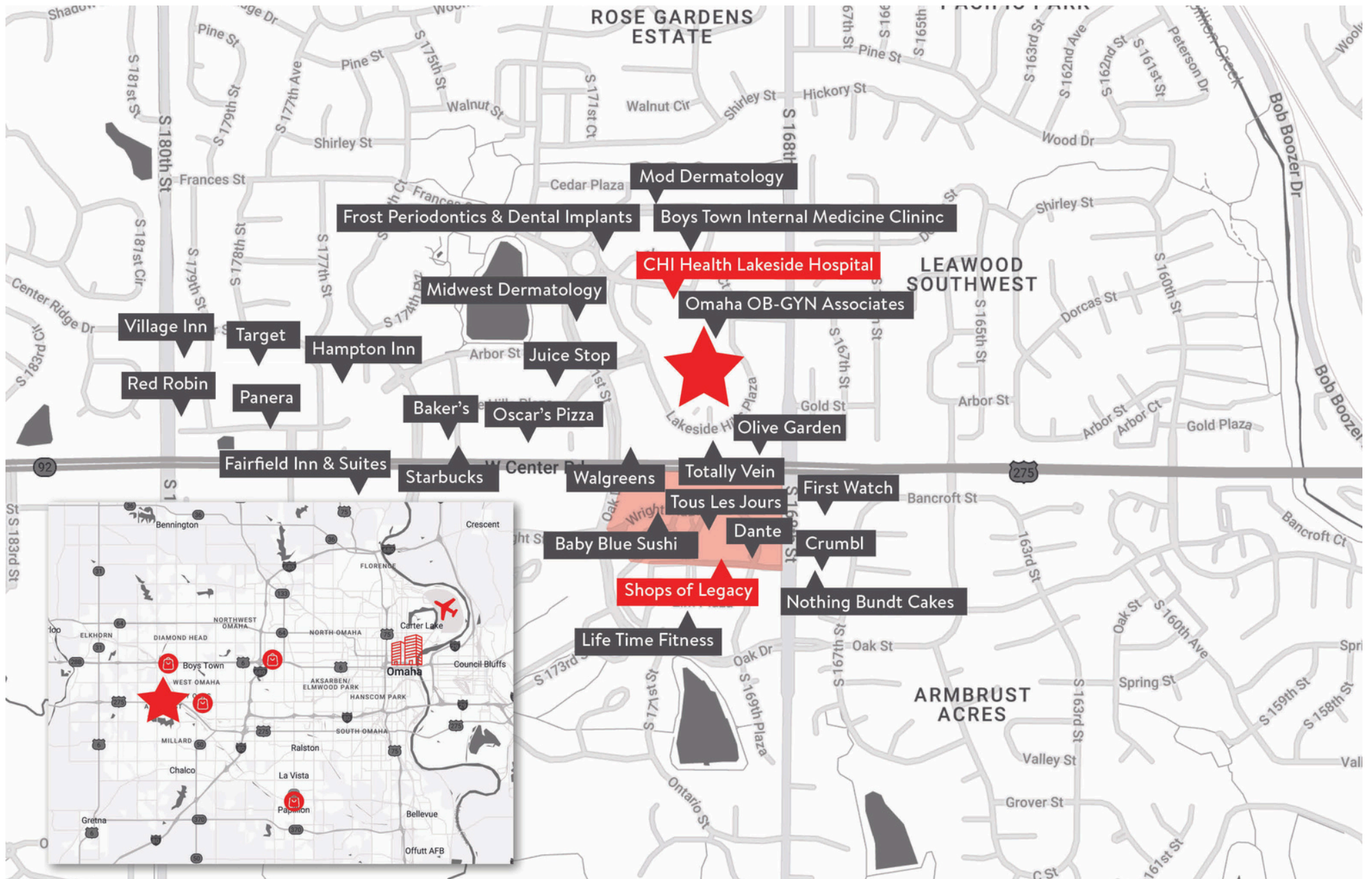
MAX CONTIGUOUS - 6,645 SF

SUITE 410 - 3,646 SF

## FLOOR PLAN



**SUITE 411 PICTURES** Suite 411 is a newly remodeled spec suite with a reception, area 7 exam rooms, nurses lab & a private restroom



## LOCATION

Our local, experienced on-campus management team maintains an on-site office where tenants can stop by anytime during business hours.

Property management oversees many events great for networking including:

- Earth Day
- Giving Tuesday
- Ice Cream Social
- Fire Safety Events

Property management prioritizes tenant satisfaction and wellbeing, investing in several ways of collecting and addressing tenant feedback, including:

- Kingsley Survey
- In-Office Visits
- Work Order System



**Healthpeak<sup>®</sup>** | **DOC LISTED NYSE**

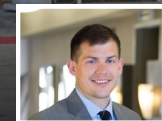
## PROPERTY MANAGEMENT



Call, email or text us today for leasing information!



**RYAN ELLIS**  
rellis@pjmorgan.com  
402-578-7536



**DERICK LEWIN**  
dlewin@pjmorgan.com  
402-651-1830

**Healthpeak**<sup>®</sup>

DOC  
LISTED  
NYSE

 **PJ MORGAN**  
REAL ESTATE

*Information furnished is from sources deemed reliable, but is not guaranteed by PJ Morgan Real Estate, or its agents and is subject to change, corrections, errors, omissions, prior sales or withdrawal, without notice.*