

CHECK OUT THE WESTWOOD!

# THE WESTWOOD

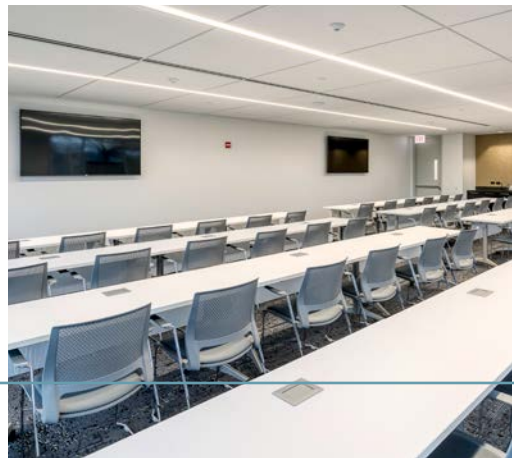
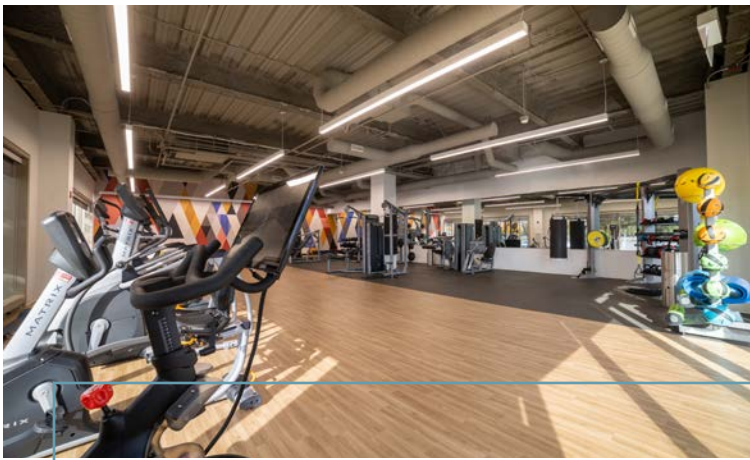
2441/2443 Warrenville Road | Lisle IL 60532

**CBRE**



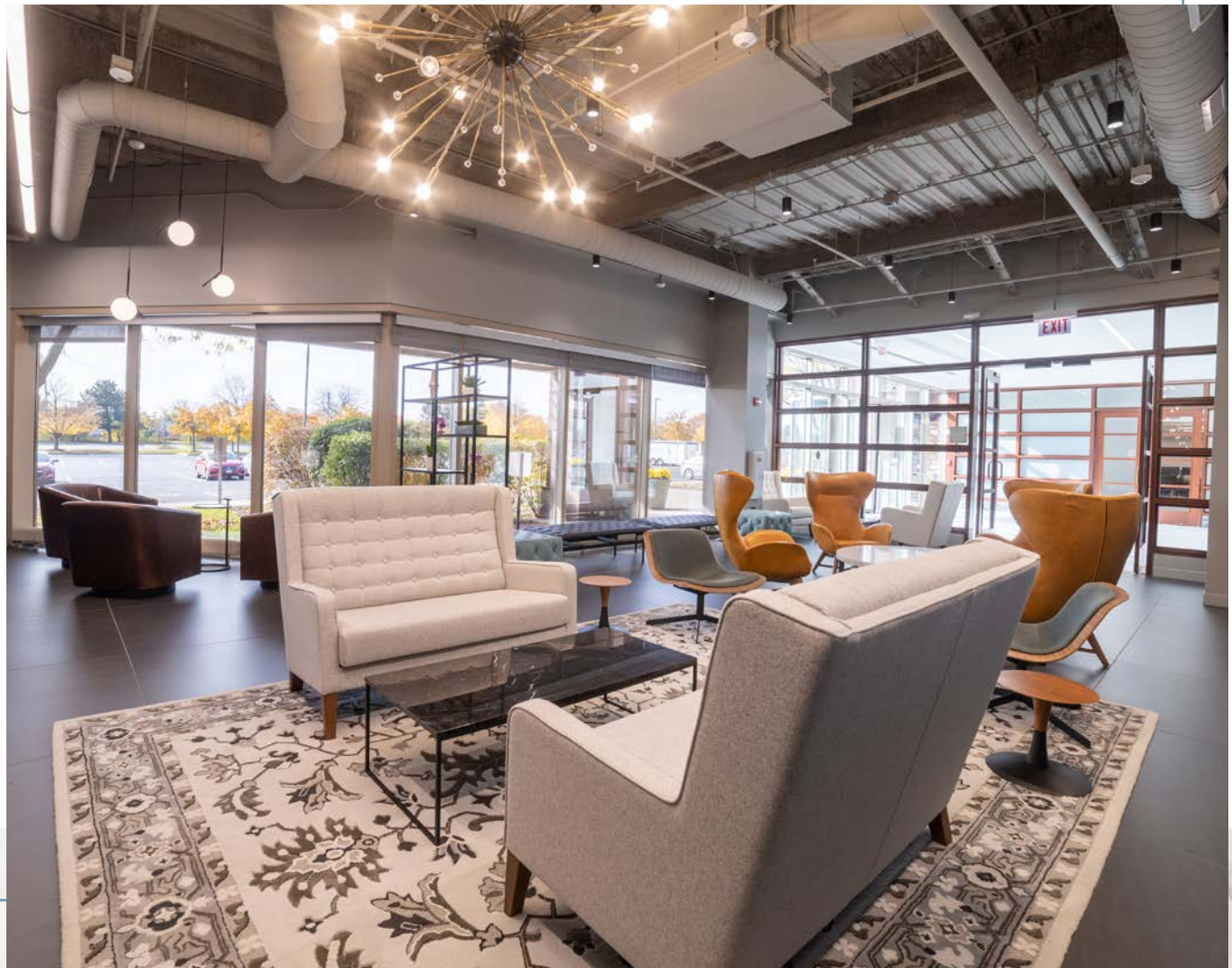
[PROPERTY VIDEO](#)

[PROPERTY WEBSITE](#)



## FULLY RENOVATED WITH TOP OF CLASS AMENITIES

- I-88 Signage Available
- New lobbies
- Outstanding fitness facility
- Multiple tenant lounges
- New building deli
- First class conferencing
- Secured heated parking
- Onsite mgmt. and security
- Tollway signage





## AMENITIES @ THE WESTWOOD

### 2443 WARRENVILLE ROAD:

#### **UPTOWN LOUNGE**

New café that offers modern/contemporary seating to enjoy breakfast /lunch or a lounge to simply collaborate with coworkers

#### **CONFERENCE CENTER**

Newly constructed conference facility with state of the art technology

### 2441 WARRENVILLE ROAD:

#### **DOWNTOWN LOUNGE**

Enjoy fireside seating to relax or meet with others

#### **FITNESS CENTER**

Top of class fitness facility with high-end equipment and locker rooms

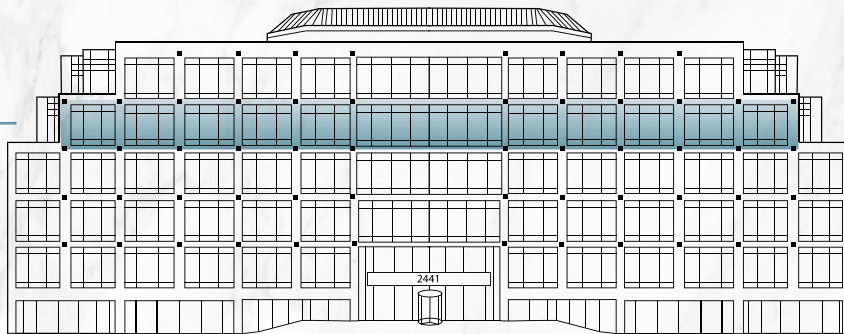
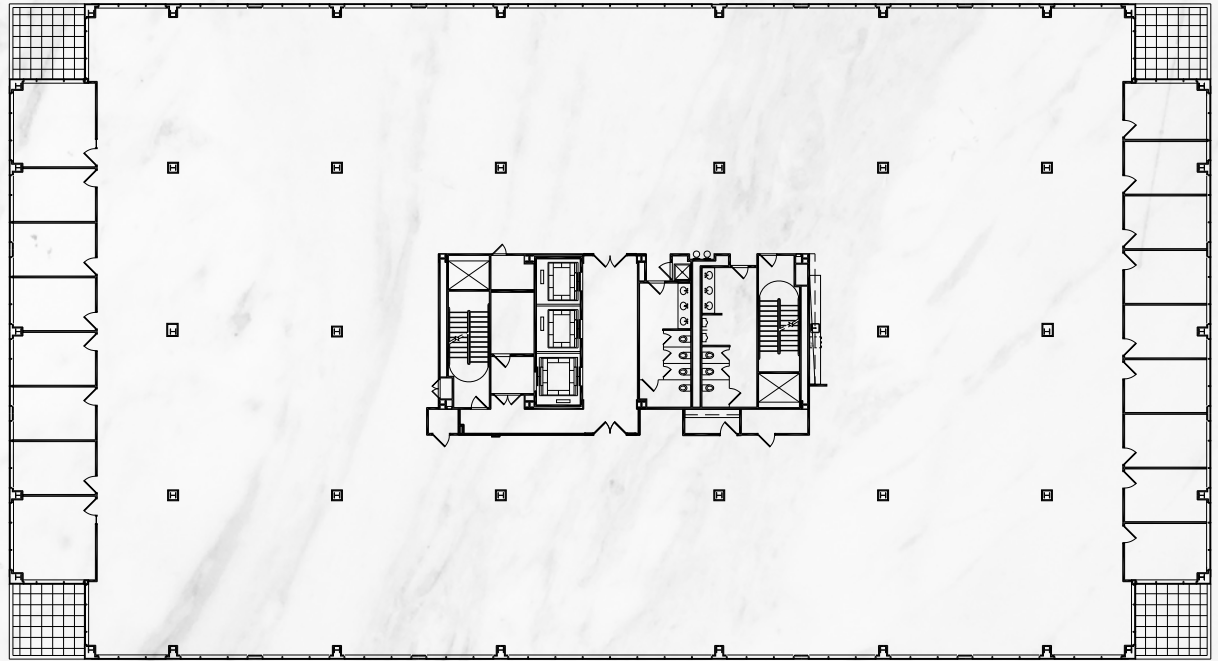
#### **COFFEE KIOSK**

Coffee kiosk in new lobby for convenient grab and go



2441 Warrenville Road

**SUITE 500**  
**27,952 RSF**

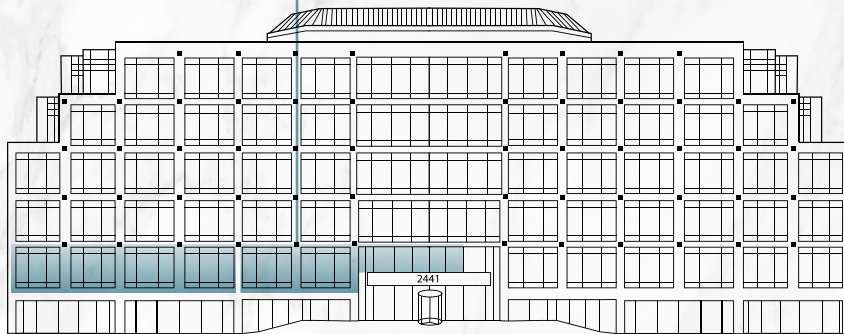


2441 Warrenville Road

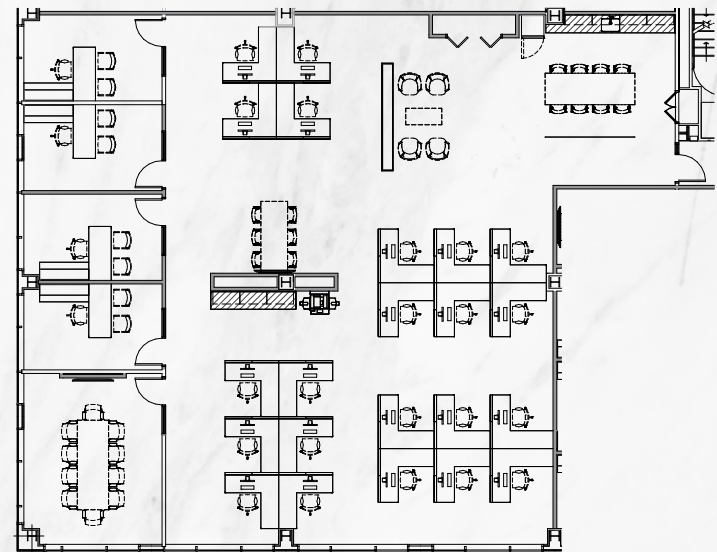
**SUITE 250**  
4,684 RSF

**SUITE 200**  
2,815 RSF

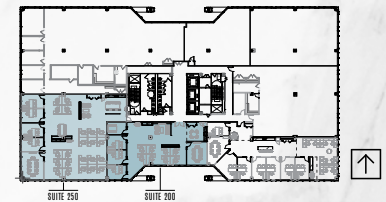
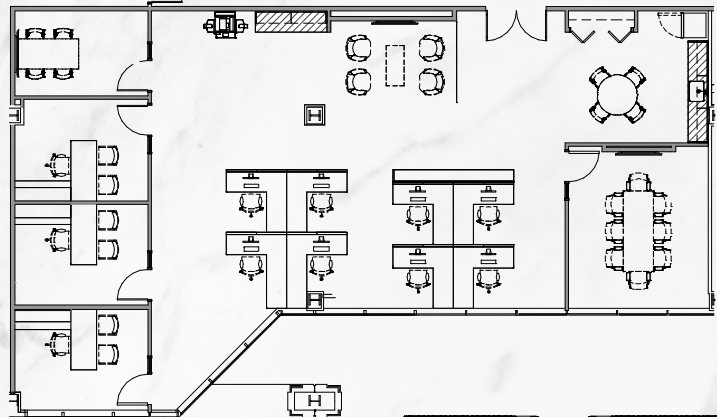
\*SUITES ARE NOT FURNISHED  
BUT CAN BE MADE AVAILABLE



**SUITE 250**

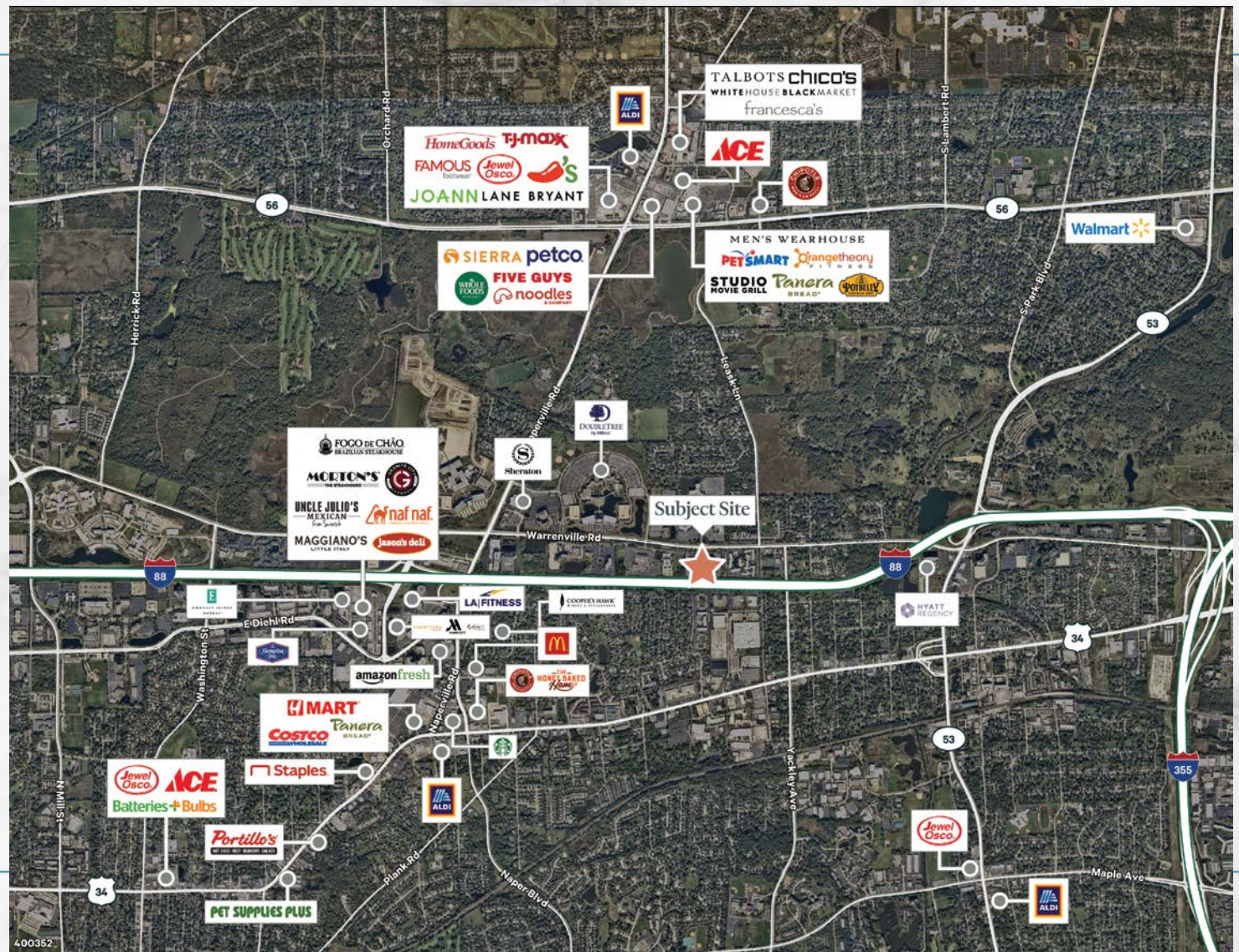


**SUITE 200**



**ADDITIONAL SUITES ARE ALSO AVAILABLE FOR LEASE**

# AREA MAP



# FOR MORE INFORMATION

**PETE ADAMO**  
 +1 630 573 7053  
 peter.adamo@cbre.com

**ADAM LAWLER**  
 +1 630 368 2610  
 adam.lawler@cbre.com

