



7560 CARPENTER FIRE STATION ROAD

CARY, NC 27519

UP TO **8,872 SF**

**FOR
LEASE**

LISTING BROKER:

SHELLEY BHATIA, CCIM

910.273.8474 (M)

SBHATIA@TRADEMARKPROPERTIES.COM



**1001 WADE AVENUE SUITE 300, RALEIGH, NC 27605
TRADEMARKPROPERTIES.COM | 919-782-5552**

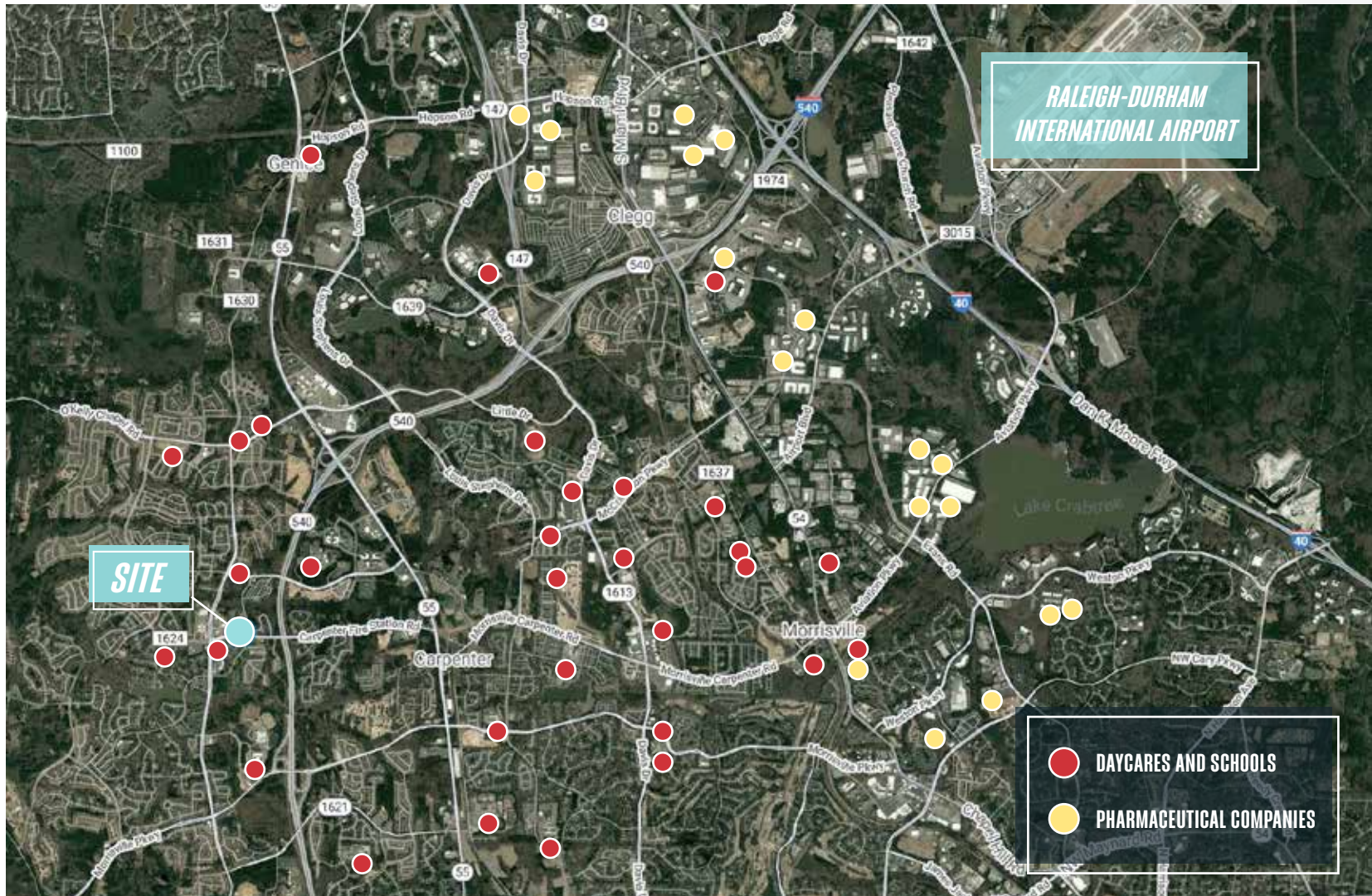
PROPERTY HIGHLIGHTS

- » **Three-story Class A medical office building**
- » **The West Cary property is perfectly positioned in the center of the Triangle with convenient access to RTP as well as RDU International Airport**
- » **The surrounding Cary suburbs provide an excellent demographic of high-income households with a highly-educated workforce**
- » **36,000+ SF space features an excellent variety of medical tenants**
- » **4:1,000 SF parking**
- » **Great visibility with building and monument signage available**
- » **Timeshare Rate: Negotiable for Suite 303; 1,500 SF**
- » **Vacant spaces available in cold dark shell with a TI allowance**



7560 CARPENTER FIRE STATION RD
CARY, NC 27519

LOCATION MAP



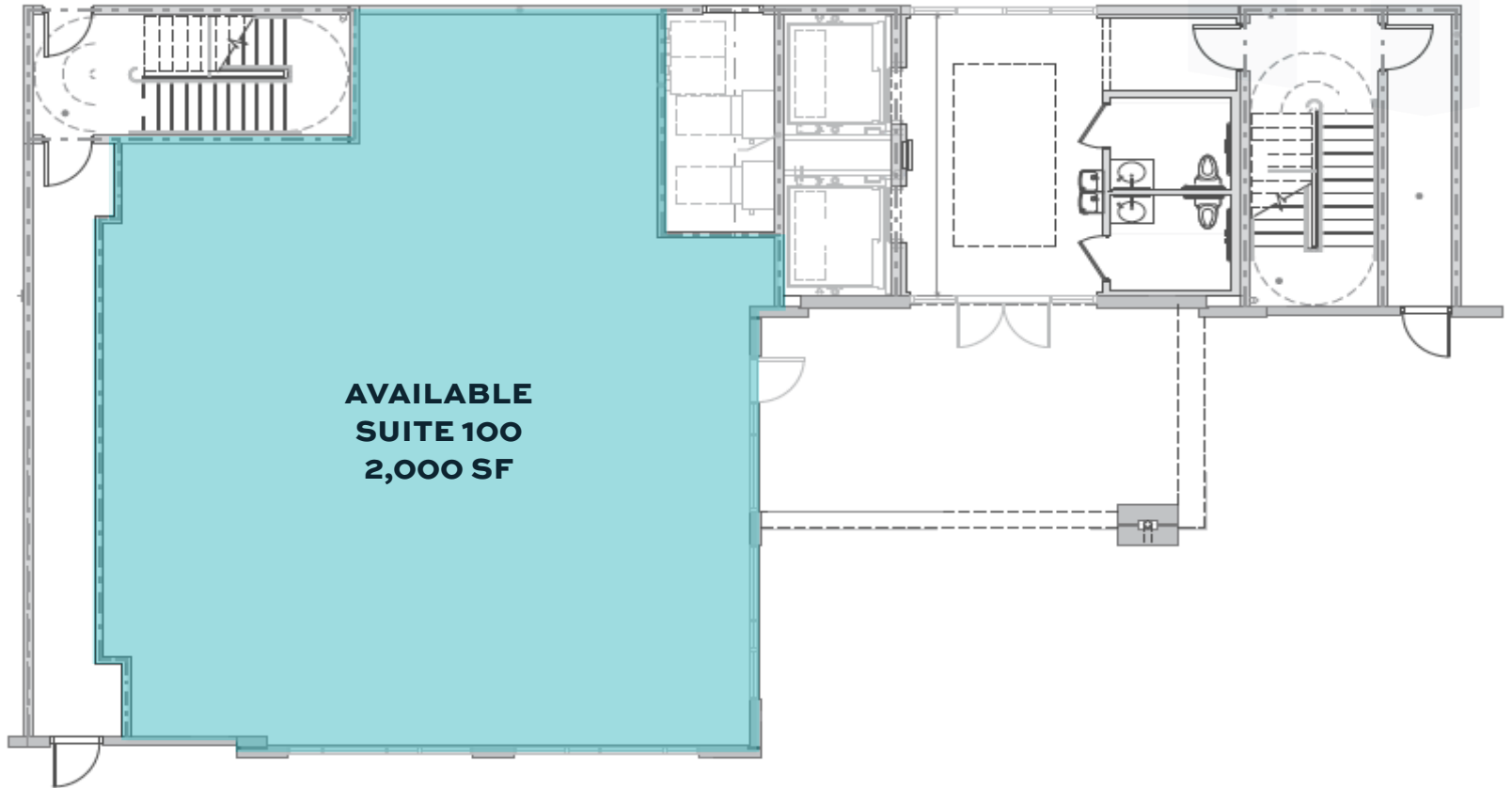
SHELLEY BHATIA, CCIM
910.273.8474 (M)
SBHATIA@TRADEMARKPROPERTIES.COM

1001 WADE AVENUE
SUITE 300, RALEIGH, NC 27605
TRADEMARKPROPERTIES.COM
919-782-5552

7560 CARPENTER FIRE STATION RD
CARY, NC 27519

FIRST FLOOR

LEASE RATE: MID \$30s + \$6.00, NNN

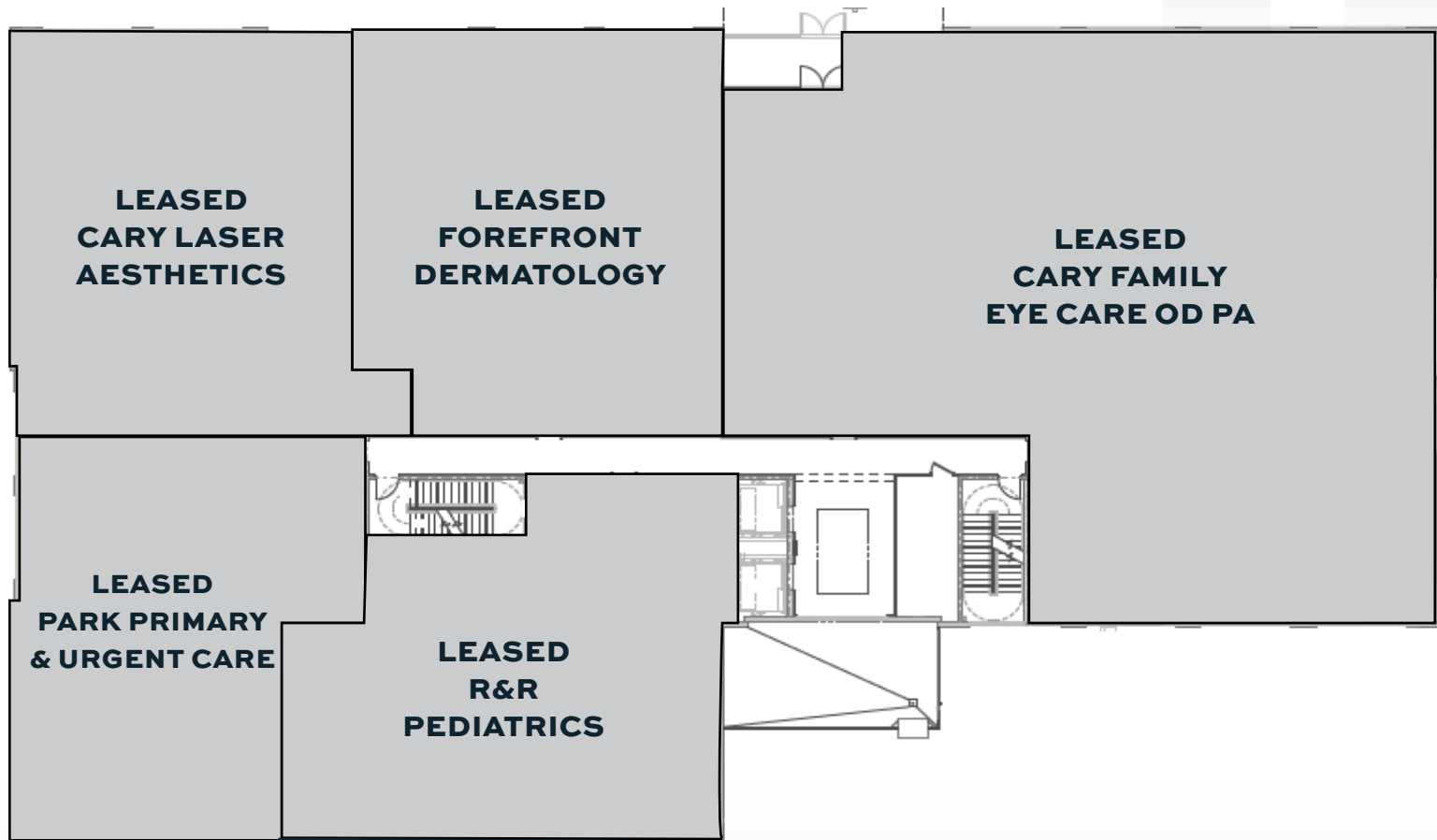


SHELLEY BHATIA, CCIM
910.273.8474 (M)
SBHATIA@TRADEMARKPROPERTIES.COM

1001 WADE AVENUE
SUITE 300, RALEIGH, NC 27605
TRADEMARKPROPERTIES.COM
919-782-5552

**7560 CARPENTER FIRE STATION RD
CARY, NC 27519**

SECOND FLOOR



SHELLEY BHATIA, CCIM
910.273.8474 (M)
SBHATIA@TRADEMARKPROPERTIES.COM

1001 WADE AVENUE
SUITE 300, RALEIGH, NC 27605
TRADEMARKPROPERTIES.COM
919-782-5552

7560 CARPENTER FIRE STATION RD
CARY, NC 27519

THIRD FLOOR



****SUITE OCCUPIED
TWO DAYS/WEEK BY
PARK GASTROENTEROLOGY**

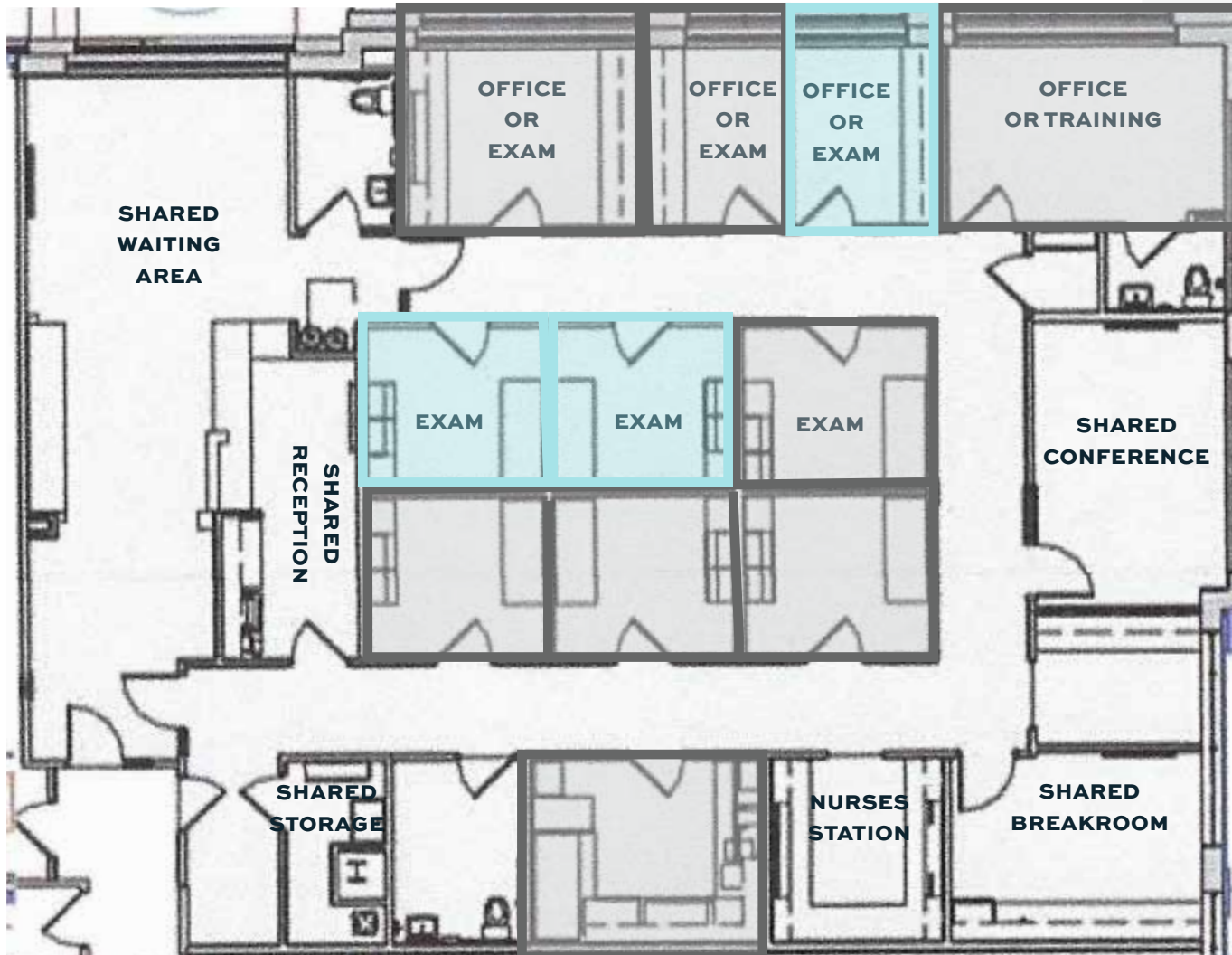
SUITE	SIZE	RENT/MONTH	AVAILABLE
301	2,624 SF	\$30.00	Immediately
302	2,333 SF	\$30.00	Immediately
303	1,500 SF	Negotiable	Immediately
304	1,915 SF	\$30.00	Immediately

SHELLEY BHATIA, CCIM
910.273.8474 (M)
SBHATIA@TRADEMARKPROPERTIES.COM

1001 WADE AVENUE
SUITE 300, RALEIGH, NC 27605
TRADEMARKPROPERTIES.COM
919-782-5552

7560 CARPENTER FIRE STATION RD
CARY, NC 27519

SUITE 303 - TIMESHARE SPACE



SHELLEY BHATIA, CCIM
910.273.8474 (M)
SBHATIA@TRADEMARKPROPERTIES.COM

1001 WADE AVENUE
SUITE 300, RALEIGH, NC 27605
TRADEMARKPROPERTIES.COM
919-782-5552

7560 CARPENTER FIRE STATION RD
CARY, NC 27519

EXAMPLE OF UPFIT SUITE



SHELLEY BHATIA, CCIM
910.273.8474 (M)
SBHATIA@TRADEMARKPROPERTIES.COM

1001 WADE AVENUE
SUITE 300, RALEIGH, NC 27605
TRADEMARKPROPERTIES.COM
919-782-5552

**7560 CARPENTER FIRE STATION RD
CARY, NC 27519**

GALLERY



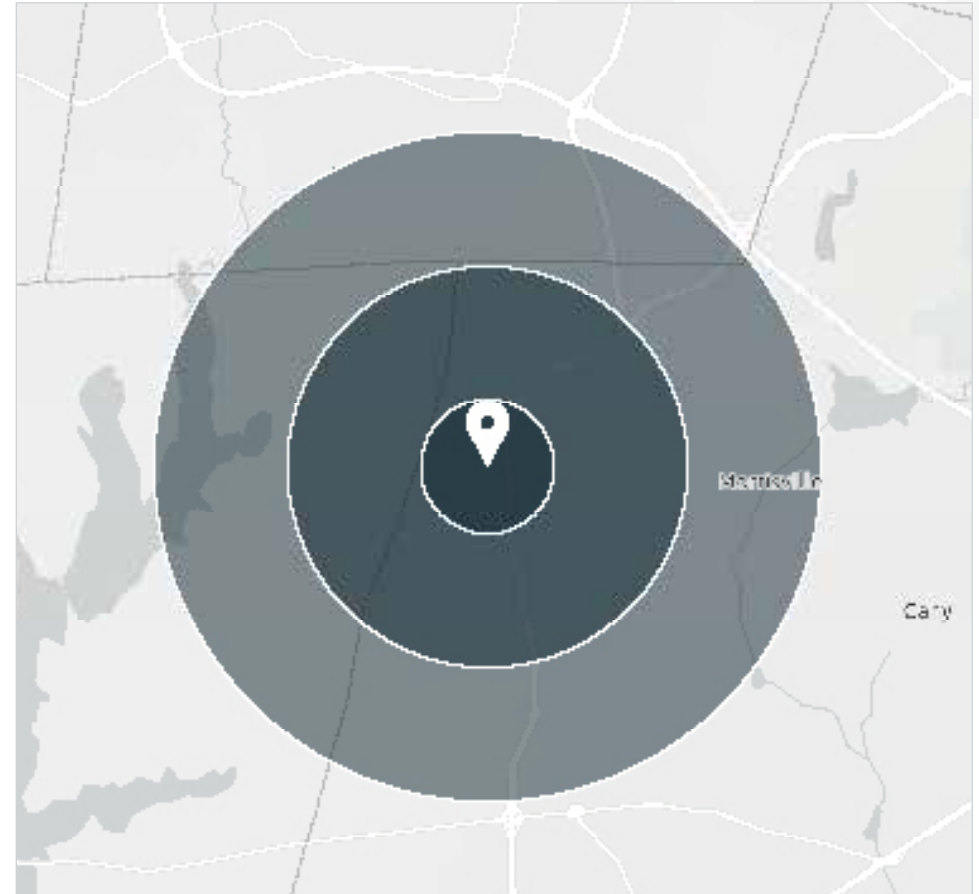
**SHELLEY BHATIA, CCIM
910.273.8474 (M)
SBHATIA@TRADEMARKPROPERTIES.COM**

**1001 WADE AVENUE
SUITE 300, RALEIGH, NC 27605
TRADEMARKPROPERTIES.COM
919-782-5552**

**7560 CARPENTER FIRE STATION RD
CARY, NC 27519**

DEMOGRAPHICS

	1-Mile	3-Mile	5-Mile
2025 POPULATION	15,485	66,607	149,625
2030 POPULATION (PROJECTED)	16,476	70,477	160,023
2025 HOUSEHOLDS	5,380	23,387	55,197
2030 HOUSEHOLDS (PROJECTED)	5,761	24,954	59,892
OWNER-OCCUPIED HOUSING UNITS	3,482	15,319	34,357
RENTER-OCCUPIED HOUSING UNITS	1,898	8,068	20,840
2025 AVERAGE HOUSEHOLD INCOME	\$217,287	\$201,797	\$188,023
2030 AVG HOUSEHOLD INCOME (PROJECTED)	\$234,956	\$221,085	\$204,421



SHELLEY BHATIA, CCIM
910.273.8474 (M)
SBHATIA@TRADEMARKPROPERTIES.COM

**1001 WADE AVENUE
SUITE 300, RALEIGH, NC 27605
TRADEMARKPROPERTIES.COM
919-782-5552**

LISTING BROKER:

SHELLEY BHATIA, CCIM

910.273.8474 (M)

SBHATIA@TRADEMARKPROPERTIES.COM

THE PARK
@
WEST CARY



TRADEMARK
PROPERTIES

THIS IS OUR TRADEMARK

1001 WADE AVENUE SUITE 300, RALEIGH, NC 27605
TRADEMARKPROPERTIES.COM | 919-782-5552

THE INFORMATION CONTAINED HEREIN WAS OBTAINED FROM SOURCES BELIEVED RELIABLE; HOWEVER, TRADEMARK PROPERTIES MAKES NO GUARANTEES, WARRANTIES, OR REPRESENTATIONS AS TO THE COMPLETENESS OR ACCURACY THEREOF. THE PRESENTATION OF THIS PROPERTY IS SUBMITTED SUBJECT TO ERRORS, OMISSIONS, CHANGES OF PRICE OR CONDITIONS PRIOR TO SALE OR LEASE, OR WITHDRAWAL WITHOUT NOTICE.