



You build the Kingdom, We build the Castle

CHURCH OFFICES / CLASSROOMS FOR SALE

309 - 311 N. Main Street, Santa Ana

Currently used as a Church Office/Classroom Facility
with 308 N. Main Street, Santa Ana

Currently used as Church Admin Offices & Classrooms

Please Do Not Disturb

*Appointment Only

This is a historic office building built in 1908. It is 3 stories above grade with a basement that covers the entire building footprint. The building has been completely upgraded and brought up to current codes. Half of the ground level (311 N. Main Street) can be leased for Retail or Office.

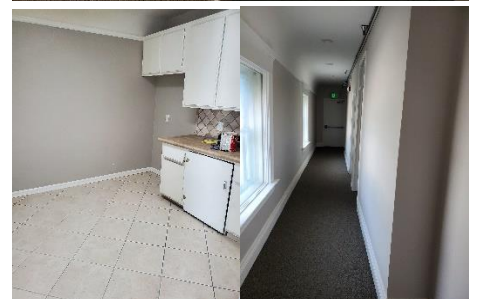
New roof, HVAC, fire sprinklers & alarms, elevator, flooring, restrooms, paint, updated plumbing and many other upgrades.

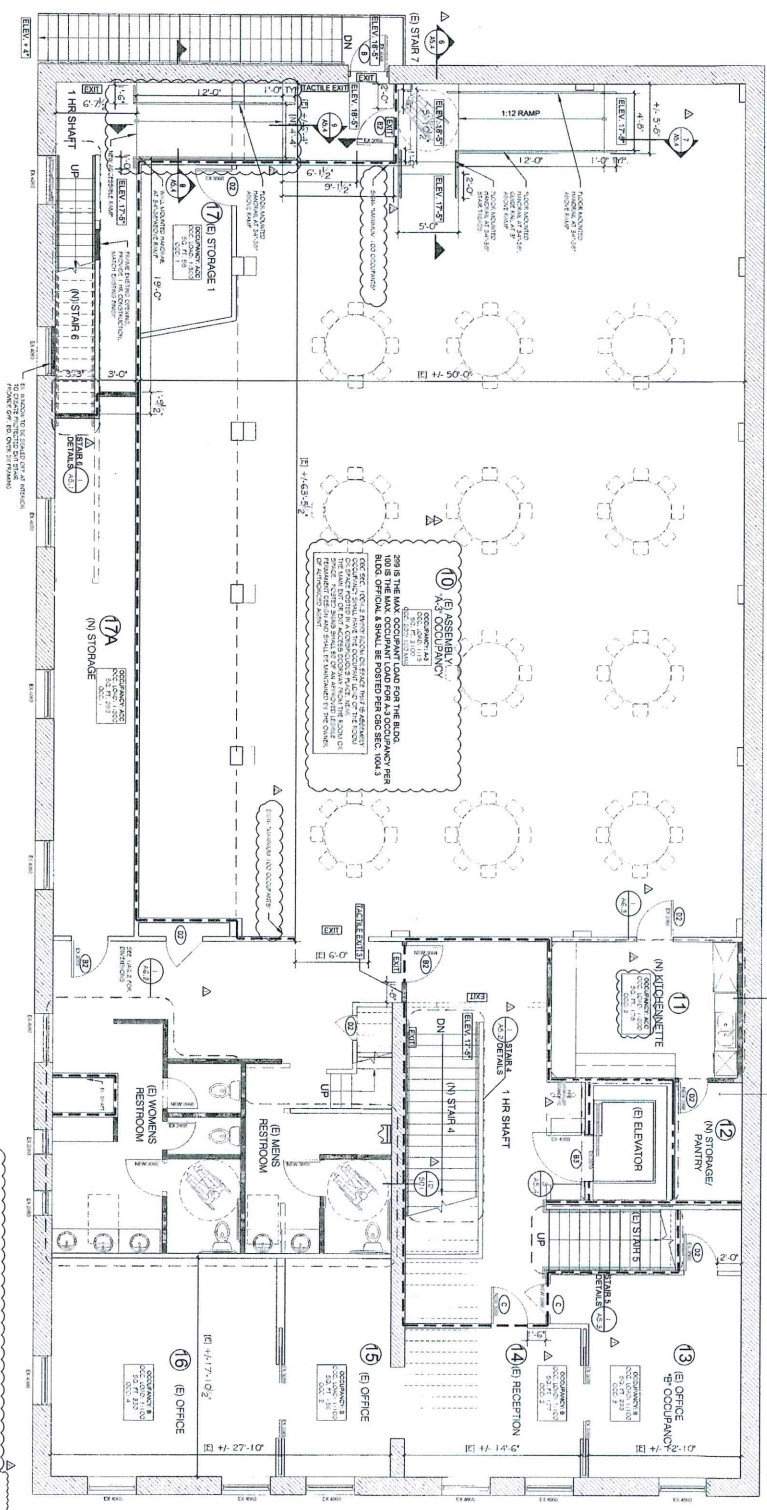
There is a large ball room for youth programming or small groups, over 15-plus offices/classrooms over 5,000sqft of basement storage and most of the plumbing has been replaced including fire alarms. This property has never been used since the remodel it is basically brand new and up to current code.

Please Call For Showing

Jon - 562-644-1894 / Lic: 00974095

Rick - 714-366-9399 / Lic: 01372351





SEE A2.4, A2.7 FOR SIGNAGE NOTES & DETAILS
 SECOND FLOOR TOTAL OCCUPANTS = 116
 PROPOSED SECOND FLOOR PLAN SCALE 1/4" = 1'-0"

DOOR NOTES

1. ALL DOORS TO HAVE LEVEL THRESHOLDS.
2. FINISH CARPETING SHALL HAVE A 1/4" MAXIMUM THICKNESS. FINISH CARPETING SHALL BE INSTALLED OVER A 1/2" MINIMUM THICKNESS SUBFLOOR.
3. DOOR SWINGS SHALL BE IN THE DIRECTION OF EXIT UNLESS OTHERWISE NOTED. ALL DOOR SWINGS SHALL BE IN THE DIRECTION OF EXIT UNLESS OTHERWISE NOTED.
4. DOOR SWINGS SHALL BE IN THE DIRECTION OF EXIT UNLESS OTHERWISE NOTED.
5. DOOR SWINGS SHALL BE IN THE DIRECTION OF EXIT UNLESS OTHERWISE NOTED.
6. DOOR SWINGS SHALL BE IN THE DIRECTION OF EXIT UNLESS OTHERWISE NOTED.
7. DOOR SWINGS SHALL BE IN THE DIRECTION OF EXIT UNLESS OTHERWISE NOTED.
8. DOOR SWINGS SHALL BE IN THE DIRECTION OF EXIT UNLESS OTHERWISE NOTED.
9. DOOR SWINGS SHALL BE IN THE DIRECTION OF EXIT UNLESS OTHERWISE NOTED.
10. DOOR SWINGS SHALL BE IN THE DIRECTION OF EXIT UNLESS OTHERWISE NOTED.
11. DOOR SWINGS SHALL BE IN THE DIRECTION OF EXIT UNLESS OTHERWISE NOTED.
12. DOOR SWINGS SHALL BE IN THE DIRECTION OF EXIT UNLESS OTHERWISE NOTED.
13. DOOR SWINGS SHALL BE IN THE DIRECTION OF EXIT UNLESS OTHERWISE NOTED.
14. DOOR SWINGS SHALL BE IN THE DIRECTION OF EXIT UNLESS OTHERWISE NOTED.
15. DOOR SWINGS SHALL BE IN THE DIRECTION OF EXIT UNLESS OTHERWISE NOTED.
16. DOOR SWINGS SHALL BE IN THE DIRECTION OF EXIT UNLESS OTHERWISE NOTED.
17. DOOR SWINGS SHALL BE IN THE DIRECTION OF EXIT UNLESS OTHERWISE NOTED.

LEGEND

#	ROOM	FLOOR	WALLS	CEILING
1	1HR SHAFT	CONCRETE	CONCRETE	CONCRETE
2	2HR SHAFT	CONCRETE	CONCRETE	CONCRETE
3	3HR SHAFT	CONCRETE	CONCRETE	CONCRETE
4	4HR SHAFT	CONCRETE	CONCRETE	CONCRETE
5	1HR RESTROOM	CONCRETE	CONCRETE	CONCRETE
6	2HR RESTROOM	CONCRETE	CONCRETE	CONCRETE
7	3HR RESTROOM	CONCRETE	CONCRETE	CONCRETE
8	4HR RESTROOM	CONCRETE	CONCRETE	CONCRETE
9	OFFICE	CONCRETE	CONCRETE	CONCRETE
10	RECEPTION	CONCRETE	CONCRETE	CONCRETE
11	ASSEMBLY	CONCRETE	CONCRETE	CONCRETE
12	STORAGE	CONCRETE	CONCRETE	CONCRETE
13	OFFICE	CONCRETE	CONCRETE	CONCRETE
14	OFFICE	CONCRETE	CONCRETE	CONCRETE
15	OFFICE	CONCRETE	CONCRETE	CONCRETE
16	OFFICE	CONCRETE	CONCRETE	CONCRETE
17	OFFICE	CONCRETE	CONCRETE	CONCRETE

FINISH SCHEDULE

#	FINISH	ROOM
1	CONCRETE	1HR SHAFT, 2HR SHAFT, 3HR SHAFT, 4HR SHAFT
2	CONCRETE	1HR RESTROOM, 2HR RESTROOM, 3HR RESTROOM, 4HR RESTROOM
3	CONCRETE	OFFICE, RECEPTION, STORAGE, OFFICE, OFFICE, OFFICE, OFFICE, OFFICE
4	CONCRETE	ASSEMBLY, STORAGE

PROPOSED SECOND FLOOR PLAN

309 N. MAIN

ZION APOSTOLIC ASSEMBLY CHURCH
 309 N. MAIN STREET
 SANTA ANA, CA 92701

