







348

2507W

Calhoun St

Corl

Clifton Ave



SICHUAN PALACE



PENN STATION  
EAST COAST SUBS

Paid Parking Available



PLAZA  
Artist Materials & Picture Framing



BANA MARKET

IZEN'S DRUNKEN BENTO

BETTER BLEND



2501

W Clifton Ave

W McMillan St

8,192 ADT '25

W McMillan St

GoodPlates Eatery



Ninja Grill

THAI EXPRESS

ADEEP INDIA



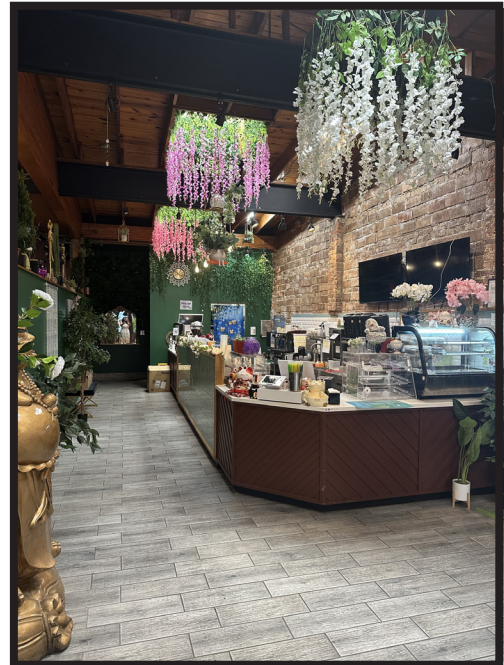
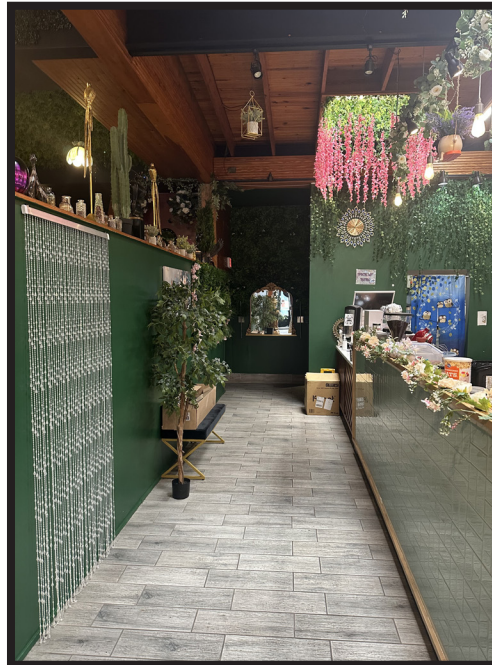
2396

Schorr Alley

204 W MCMILLAN STREET  
Cincinnati, OH 45219

Zamaris "Z" M. Garcia  
zamaris@onsiteretailgroup.com  
513.924.5265

OnSite  
Retail Group



Zamaris "Z" M. Garcia  
zamaris@onsiteretailgroup.com  
513.924.5265

204 W MCMILLAN STREET  
Cincinnati, OH 45219



## Summary Profile

2010-2020 Census, 2025 Estimates with 2030 Projections  
 Calculated using Weighted Block Centroid from Block Groups



Lat/Lon: 39.128/-84.5196

204 W McMillan St Cincinnati, OH 45219	1 mi radius	3 mi radius	5 mi radius
<b>Population</b>			
2025 Estimated Population	36,430	154,829	352,453
2030 Projected Population	38,177	161,410	356,224
2020 Census Population	31,206	136,136	327,389
2010 Census Population	27,557	135,099	321,928
Projected Annual Growth 2025 to 2030	1.0%	0.9%	0.2%
Historical Annual Growth 2010 to 2025	2.1%	1.0%	0.6%
2025 Median Age	24.6	31.8	33.6
<b>Households</b>			
2025 Estimated Households	13,952	70,930	157,832
2030 Projected Households	15,027	75,472	162,052
2020 Census Households	11,793	60,595	144,710
2010 Census Households	10,858	58,591	139,285
Projected Annual Growth 2025 to 2030	1.5%	1.3%	0.5%
Historical Annual Growth 2010 to 2025	1.9%	1.4%	0.9%
<b>Race and Ethnicity</b>			
2025 Estimated White	61.7%	56.0%	60.4%
2025 Estimated Black or African American	26.1%	34.4%	30.3%
2025 Estimated Asian or Pacific Islander	6.7%	3.3%	2.3%
2025 Estimated American Indian or Native Alaskan	0.1%	0.2%	0.2%
2025 Estimated Other Races	5.4%	6.1%	6.8%
2025 Estimated Hispanic	3.9%	4.8%	5.7%
<b>Income</b>			
2025 Estimated Average Household Income	\$59,385	\$87,082	\$92,528
2025 Estimated Median Household Income	\$39,284	\$59,931	\$64,834
2025 Estimated Per Capita Income	\$24,230	\$40,511	\$41,798
<b>Education (Age 25+)</b>			
2025 Estimated Elementary (Grade Level 0 to 8)	3.7%	3.0%	3.1%
2025 Estimated Some High School (Grade Level 9 to 11)	6.1%	6.9%	6.5%
2025 Estimated High School Graduate	20.5%	23.4%	25.3%
2025 Estimated Some College	14.1%	16.0%	16.4%
2025 Estimated Associates Degree Only	4.6%	6.7%	7.5%
2025 Estimated Bachelors Degree Only	26.0%	24.1%	22.9%
2025 Estimated Graduate Degree	25.1%	20.0%	18.2%
<b>Business</b>			
2025 Estimated Total Businesses	999	8,494	14,624
2025 Estimated Total Employees	15,159	126,812	192,398
2025 Estimated Employee Population per Business	15.2	14.9	13.2
2025 Estimated Residential Population per Business	36.5	18.2	24.1