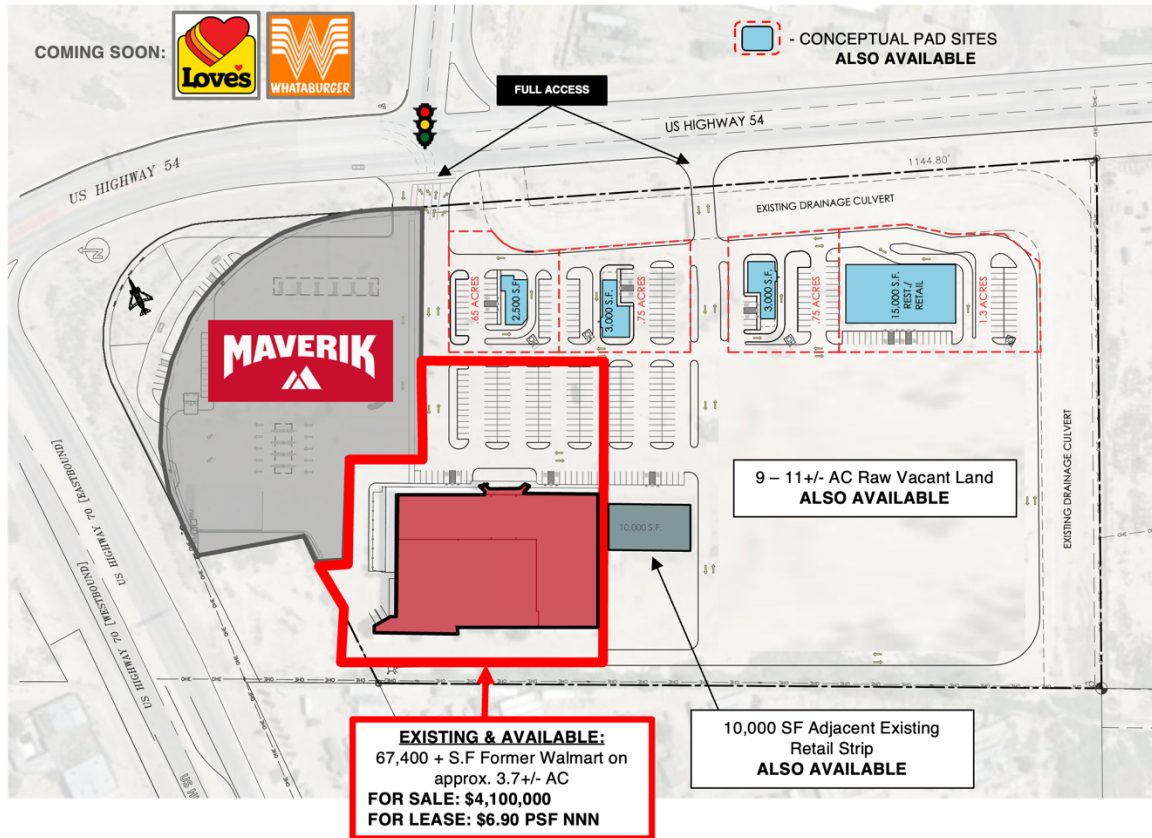


# 67,400+/- SF INDUSTRIAL/RETAIL BOX on 3.7+/- AC FOR SALE

1900 US Highway 54 S, Alamogordo, NM 88310





- Flexible Building with 67,400+/- SF of Total Building Area on 3.7 AC+/- for Variety of Uses
  - Centralized Hub Serving Vast Regional Trade Area at Major Hwy Junction (70 & 54)
  - 27'+ Ceiling Heights Throughout, approx. 5,000 SF of Office Area, Mezzanine, and Two Dock Doors Along North side of Building with Ability to Accommodate More
  - US Highways 70 & US 54 Connect to Numerous Communities in SE NM
  - Strong Traffic Counts Along Both US Hwy 70 and US Hwy 54
  - Large, Multi-Purpose Site is Easily Adaptable for Retail, Entertainment, Industrial, Institutional, Educational, Film-Related and/or Storage Uses
  - **PRICE ADJUSTMENT - FOR SALE: \$4,100,000**
  - **FOR LEASE: \$6.90 PSF/YR NNN (NNNs Estimated \$1.50 PSF/YR)**
  - Additional Opportunities Exist Within Entire 19.4 AC Site Include the Following:
    - Owner May Consider Demising 67,400 SF. Rates Will Vary.
    - Adjoining 10,000 SF Retail Strip Retail Building Available for Smaller User(s)
    - High-Profile Perimeter Pads Along State Road 54 Available
    - Abutting 9 to 11 AC Raw Undeveloped Land to the South Could Be Assembled for Future Development, Commercial, Industrial and/or Residential
- SEE BROKERS FOR ADDITIONAL DETAILS & PRICING**

**CONTACT**  
Mark or Mariah Edwards

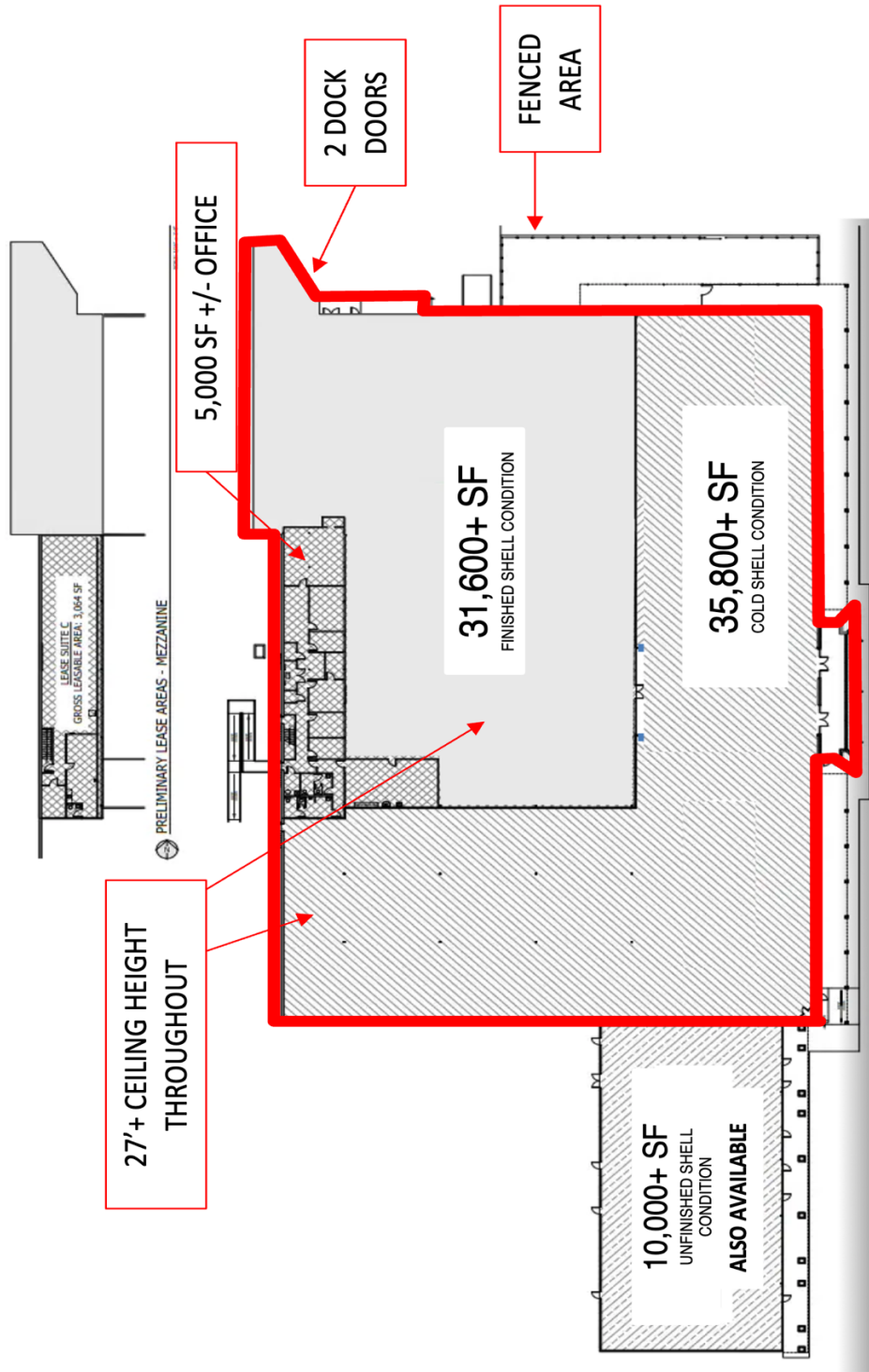


**Leasing ♦ Brokerage ♦ Development**

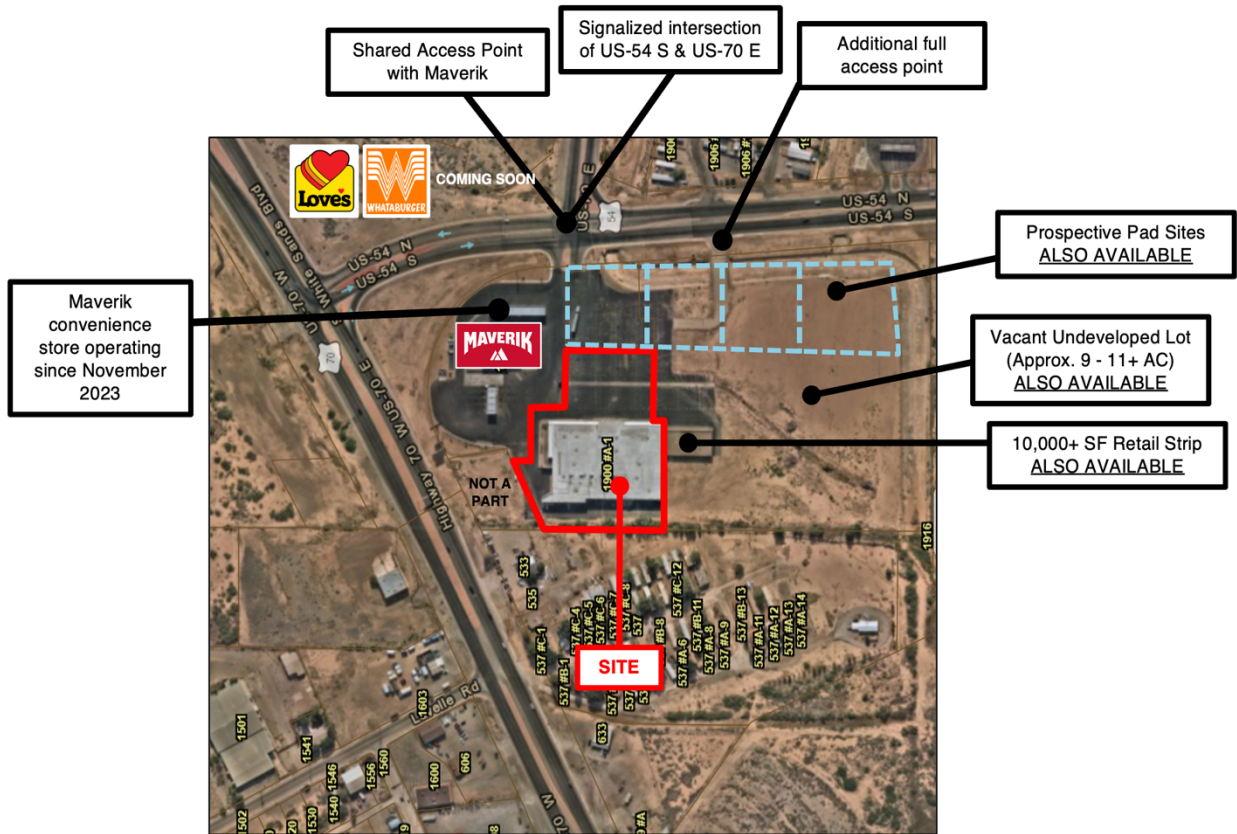
Executive West Bldg. 2929 Coors Blvd. NW Ste. #202  
Albuquerque, NM 87120  
505-998-7298 Cell 505-350-8211 or 505-228-2258 Fax 505-998-7299  
[Mark.Edwards@EdwardsCommercialRealty.com](mailto:Mark.Edwards@EdwardsCommercialRealty.com)  
[Mariah@edwardscommercialrealty.com](mailto:Mariah@edwardscommercialrealty.com)

This information was obtained from sources deemed reliable. No warranty is made by Edwards Commercial Realty, LLC as to the accuracy or completeness of this material. The pricing and sale/lease terms are subject to change.

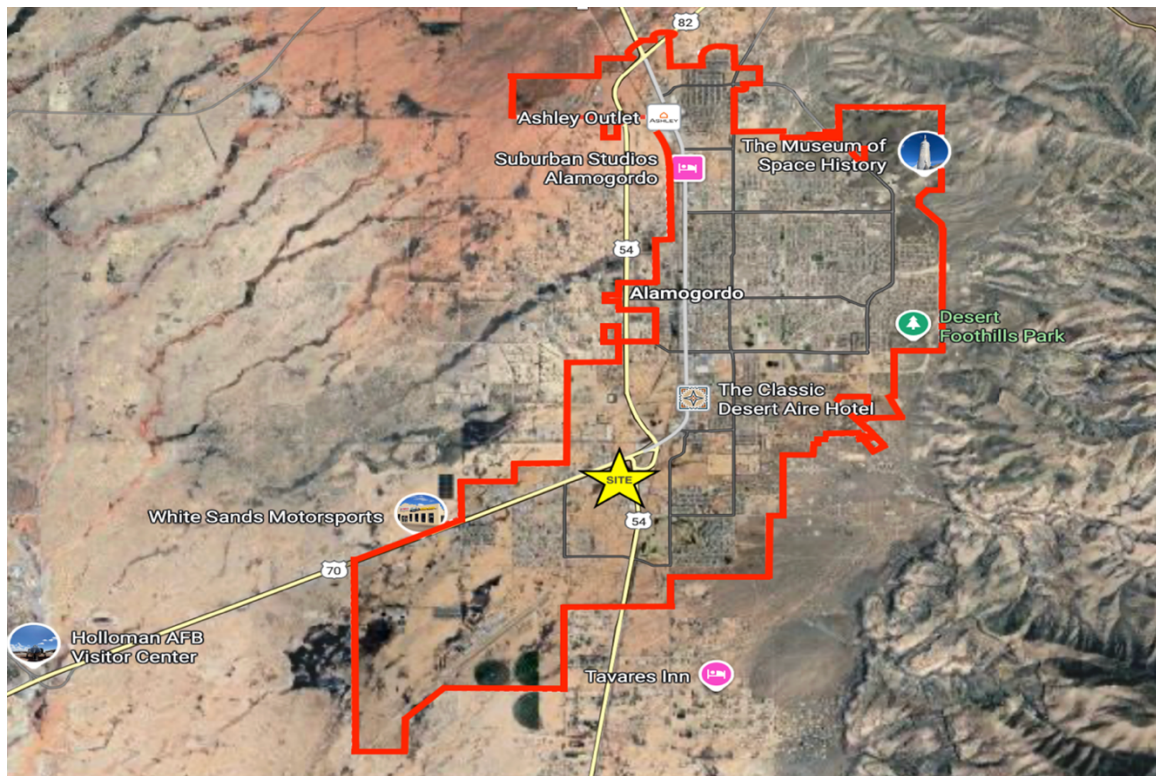
# CURRENT FLOOR PLAN



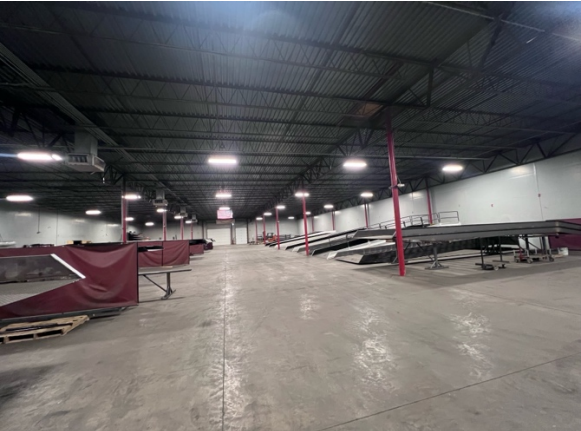
# CURRENT SITE CONDITION



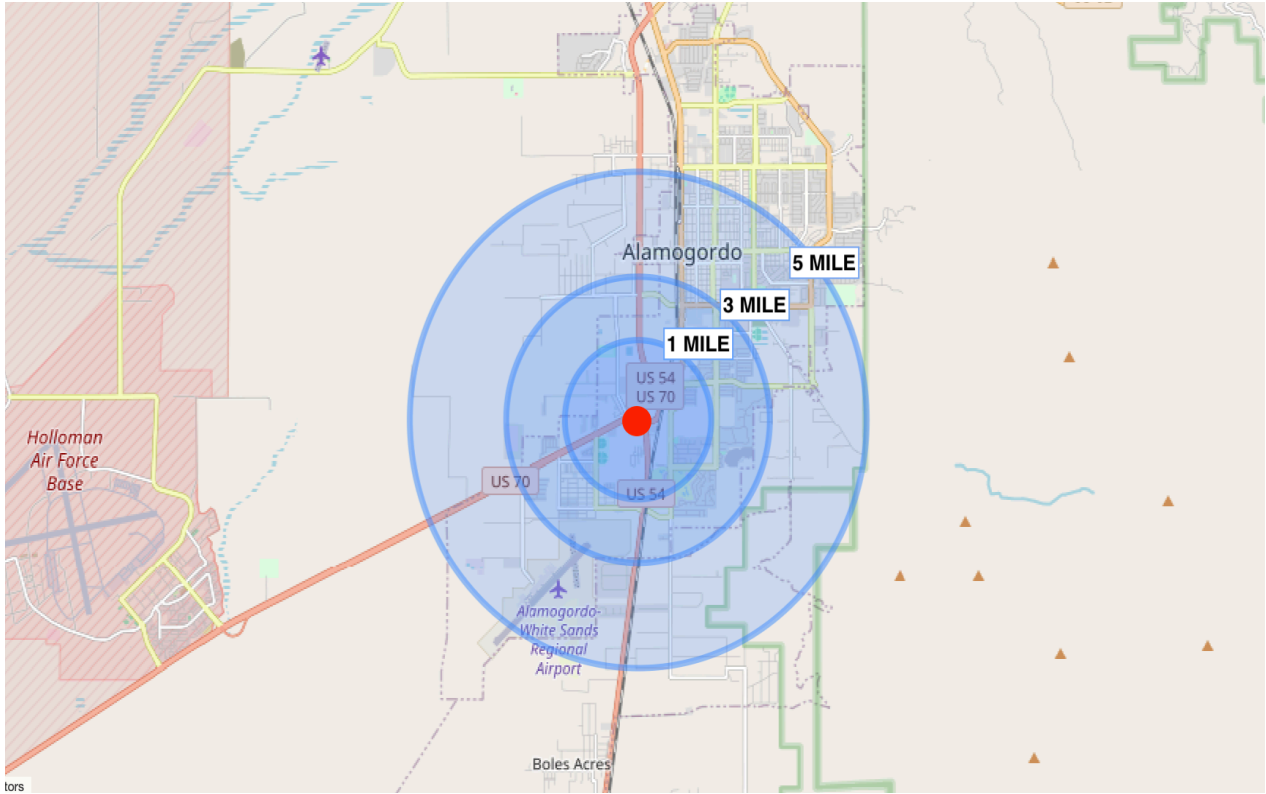
# LOCATION



# BUILDING PIX



# DEMOGRAPHICS



**POPULATION**

1 MILE	3 MILE	5 MILE
2,968	18,880	33,354



**AVG  
HOUSEHOLD  
INCOME**

1 MILE	3 MILE	5 MILE
\$60,745	\$65,378	\$66,312



**DAYTIME  
EMPLOYMENT**

1 MILE	3 MILE	5 MILE
1,083	7,490	12,763



**TRAFFIC**

Highway 70	18,368 VPD
Highway 54	17,037 VPD