

# MKT CTR

555 + 575 MKT ST

---

SAN FRANCISCO



THE ADDRESS THAT  
BREAKS EXPECTATIONS



# REDEFINING WORKPLACE CULTURE

Market Center is breaking the mold of what an office building is. Built around a “come as you are” culture, this is where San Franciscans *want* to show up.

We’re reimagining what matters most - creating spaces where real connections happen, where play sparks ideas, and your workday is *actually* energizing.

At the heart of it all, The Breakroom. A dynamic gathering place where work and play high-five each other.

**The Breakroom:** San Francisco’s first activity center Delivering Fall 2026.

**Occupancy Ready Suites:** Fully furnished Spec Suites with AV equipment.

TWO TOWERS

ONE BREAKOUT EXPERIENCE



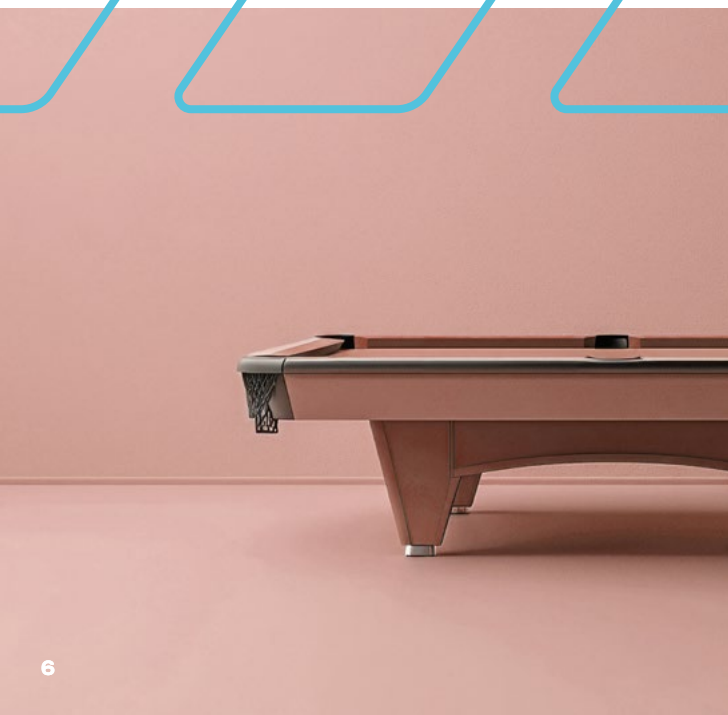
CONNECTED BY COURTYARD  
AND SHARED BRKRM



BRKRM



FROM MARTINIS TO  
JUMP SHOTS, WORK  
IS A *FUN & ENERGIZING*  
EXPERIENCE...



BRKRM

GROUND FLOOR



- Bar and Restaurant
- Board-room
- Tenant Lounge
- Library
- Basketball Court
- Golf Simulator
- Training Room
- Rockwall

BRKRM

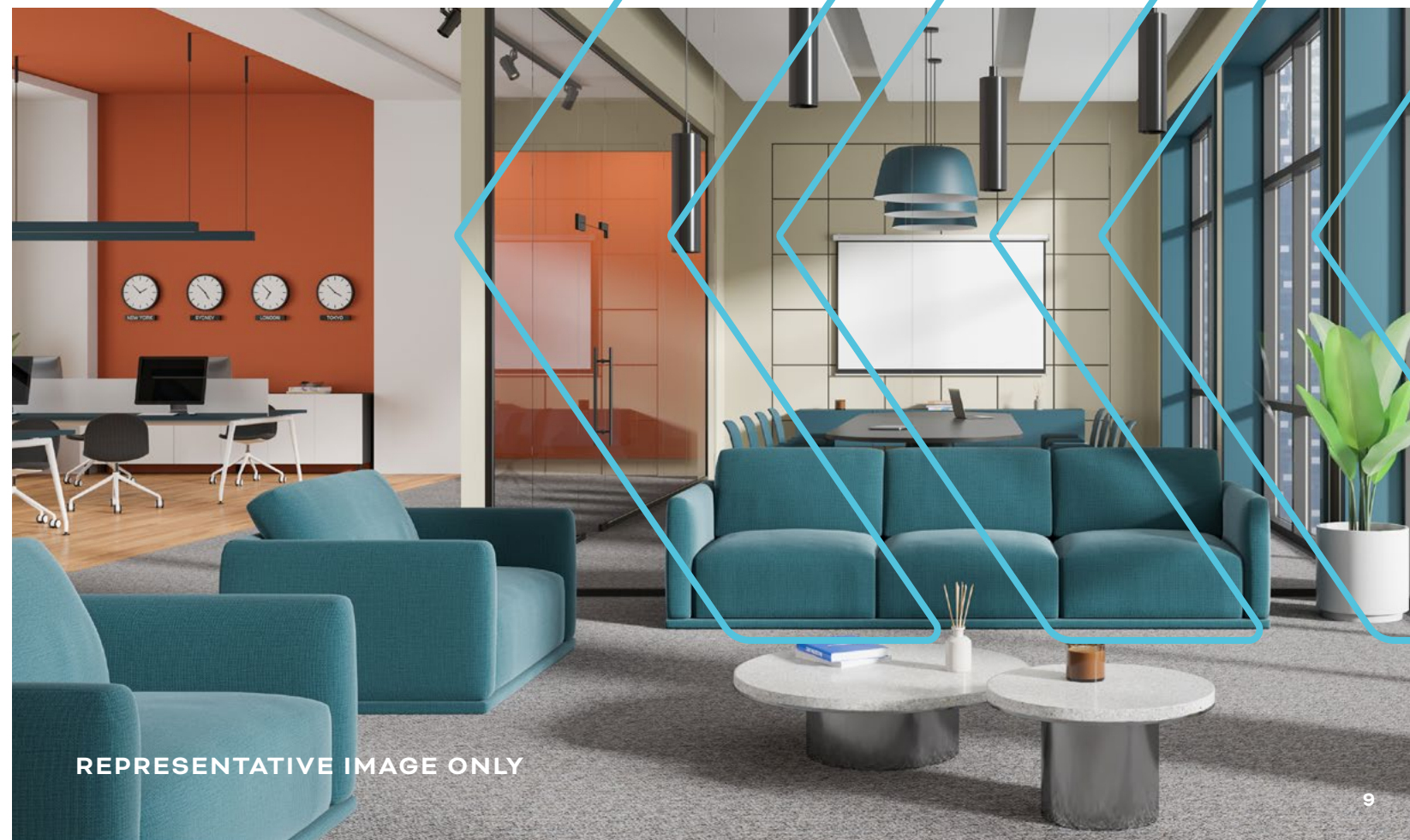
SECOND FLOOR



- Recovery Area
- Showers/Lockers
- Pickleball Courts
- Fitness Center
- Yoga Studio



REPRESENTATIVE IMAGE ONLY



REPRESENTATIVE IMAGE ONLY

# AVAILABILITY

CLICK SUITE # TO VIEW FLOOR PLAN

PARTIAL FLOOR AVAILABILITIES

555 MKT CTR

575 MKT CTR

FUTURE GROUND FLOOR  
ACTIVITY CENTER, **BRKRM**

# TEST FIT FLOOR PLAN



575 MKT CTR  
40TH FLOOR SPEC SUITE

# AVAILABILITY

CLICK SUITE # TO VIEW FLOOR PLAN

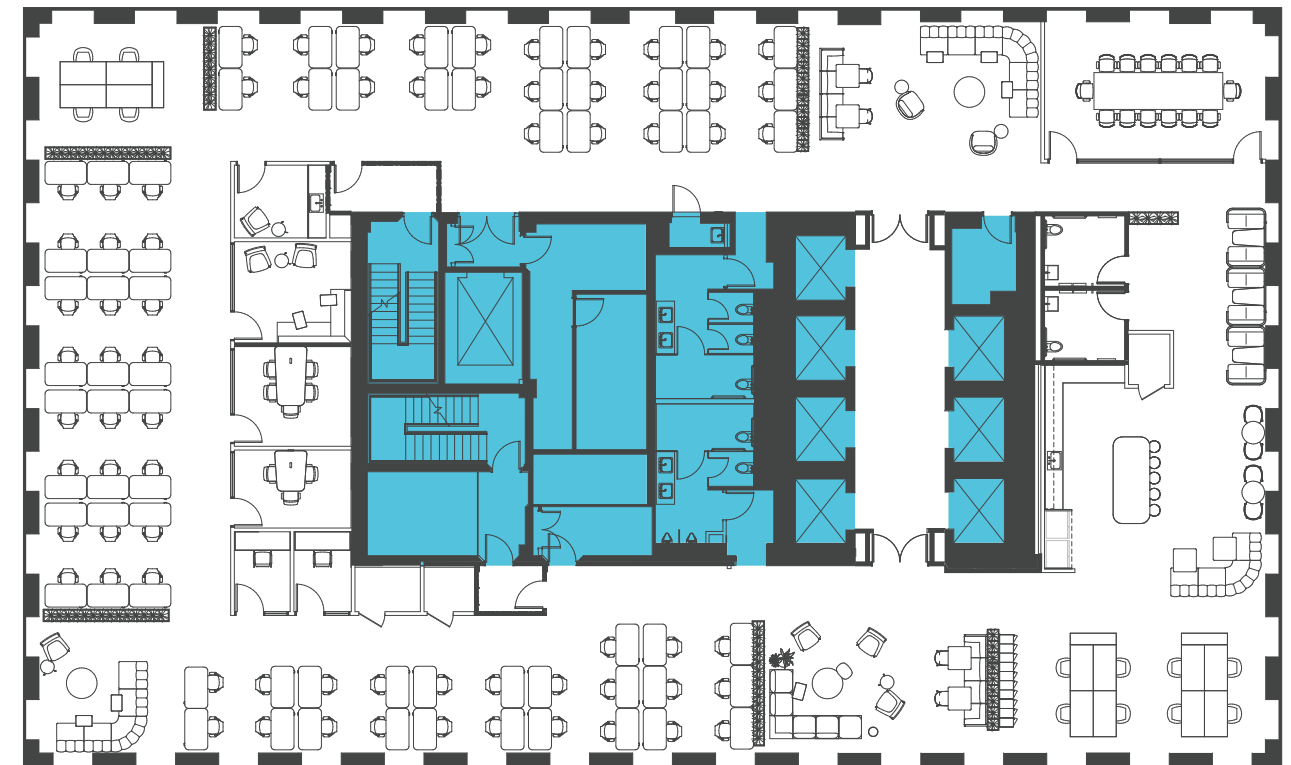
FULL FLOOR AVAILABILITIES

555 MKT CTR

575 MKT CTR

FUTURE GROUND FLOOR  
ACTIVITY CENTER, BRKRM

# TEST FIT FLOOR PLAN



555 MKT CTR  
20TH FLOOR SPEC SUITE



# AVAILABILITY

BIG BLOCK OPPORTUNITY  
UP TO 161,000 RSF

555 MKT CTR

575 MKT CTR

FLOORS 8-21  
161,000 RSF

FUTURE GROUND FLOOR  
ACTIVITY CENTER, BRKRM

# TEST FIT FLOOR PLAN



575 MKT CTR  
3800 SPEC SUITE





# CONNECTED

*IN ALL THE RIGHT WAYS*



Bus, train or pedal your way to anywhere in the Bay!



# MKT CTR

555 + 575 MKT ST

SAN FRANCISCO



## CONTACT US:

**CHARLIE HANAFIN**

*Executive Vice President*

415.395.4951

[charlie.hanafin@jll.com](mailto:charlie.hanafin@jll.com)

CA Lic. #01856260

**JAK CHURTON**

*Senior Managing Director*

415.395.7292

[jak.churton@jll.com](mailto:jak.churton@jll.com)

CA Lic. #01277724

**LEXI CASTELLINO**

*Senior Associate*

650.400.8344

[lexi.castellino@jll.com](mailto:lexi.castellino@jll.com)

CA Lic. #02221002

**CHRISTOPHER T. ROEDER**

*Vice Chairman*

415.395.4971

[chris.roeder@jll.com](mailto:chris.roeder@jll.com)

CA Lic. #01190523

Although information has been obtained from sources deemed reliable, neither Owner nor JLL makes any guarantees, warranties or representations, express or implied, as to the completeness or accuracy as to the information contained herein. Any projections, opinions, assumptions or estimates used are for example only. There may be differences between projected and actual results, and those differences may be material. The Property may be withdrawn without notice. Neither Owner nor JLL accepts any liability for any loss or damage suffered by any party resulting from reliance on this information. If the recipient of this information has signed a confidentiality agreement regarding this matter, this information is subject to the terms of that agreement. ©2026 Jones Lang LaSalle IP, Inc. All rights reserved.

**DRA**  
ADVISORS

**flynn**  
properties

**JLL**