



NORWOOD, MA

# 954 PROVIDENCE HIGHWAY

1,820 SF AVAILABLE



# PROJECT DETAILS

954 PROVIDENCE HIGHWAY • 1,820 SF AVAILABLE • RETAIL

## PROPERTY HIGHLIGHTS

- Up to 1,820 SF Available
- Co-tenants: AFC Urgent Care & Taco Bell
- Signalized Access from Dean Street
- Pylon Signage Available
- Ample parking
- 40,121 ADT on Route 1

## OFFERING SUMMARY

LEASE RATE	Call for pricing
BUILDING SIZE	5,940 SF
AVAILABLE SF	1,820 SF

## DEMOGRAPHICS

### TOTAL POPULATION

1 MILE	2 MILES	3 MILES	4 MILES
10,600	30,653	58,544	91,198

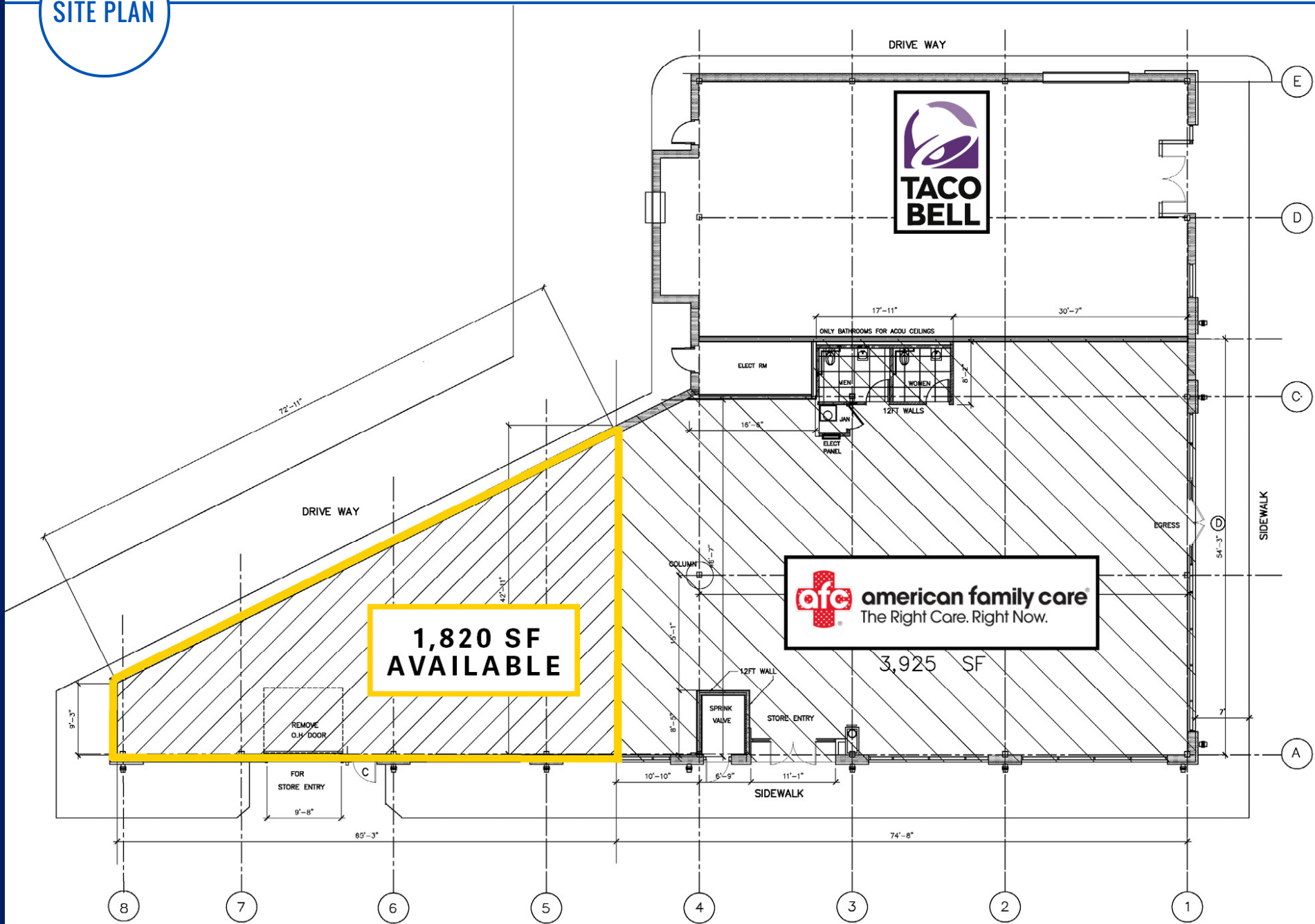
### MEDIAN HH INCOME

1 MILE	2 MILES	3 MILES	4 MILES
\$88,126	\$96,565	\$107,752	\$110,497



SITE PLAN

954 PROVIDENCE HIGHWAY • 1,820 SF AVAILABLE • RETAIL



1,820 SF AVAILABLE

american family care  
The Right Care. Right Now.

3,925 SF

DRIVE WAY

DRIVE WAY

SIDEWALK

SIDEWALK

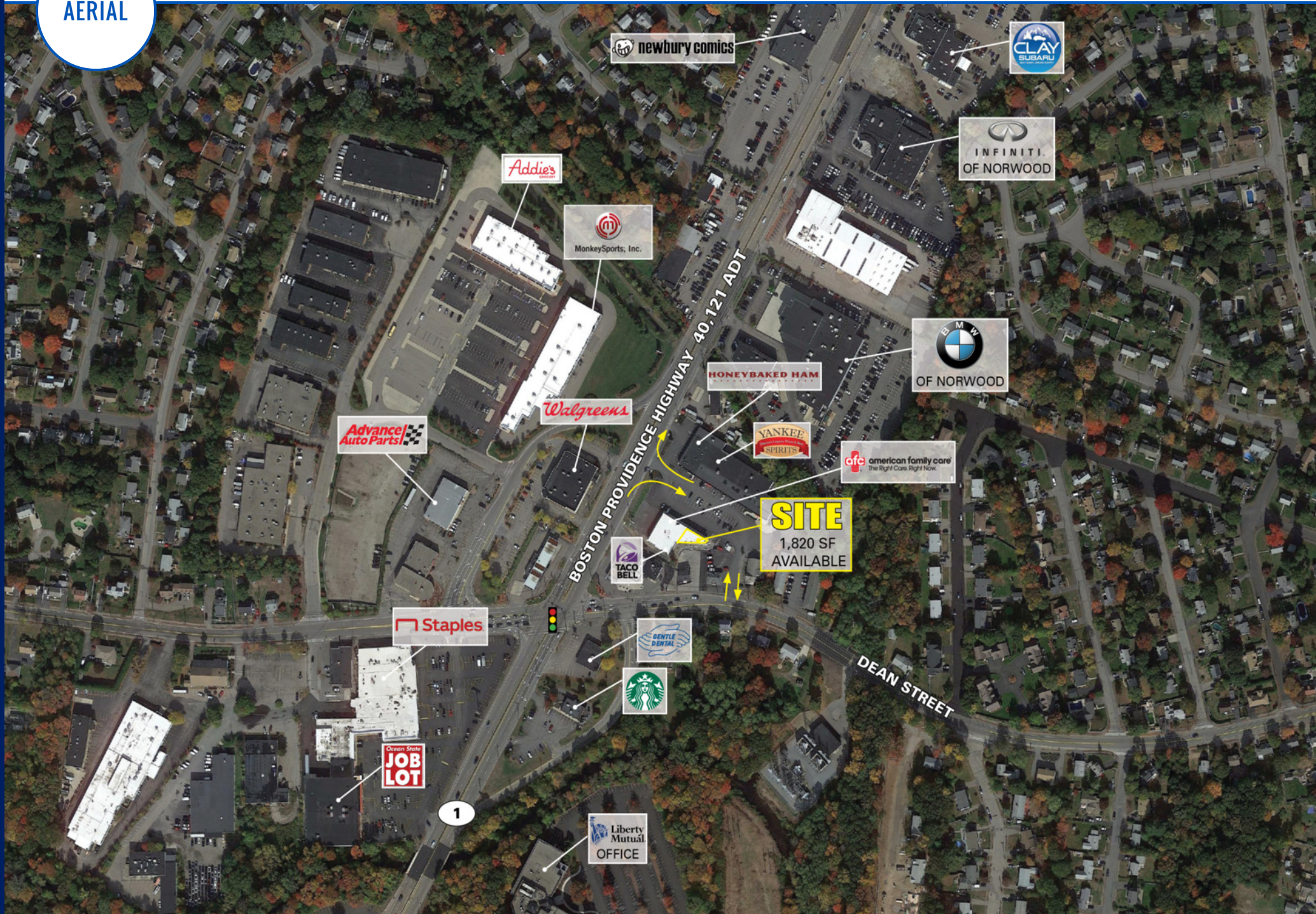
ROUTE 1

THE USER OF THE PLAN SHALL FIELD VERIFY ALL CONDITIONS & MEASUREMENTS

FLOOR PLAN 1/8"=1'-0"

AERIAL

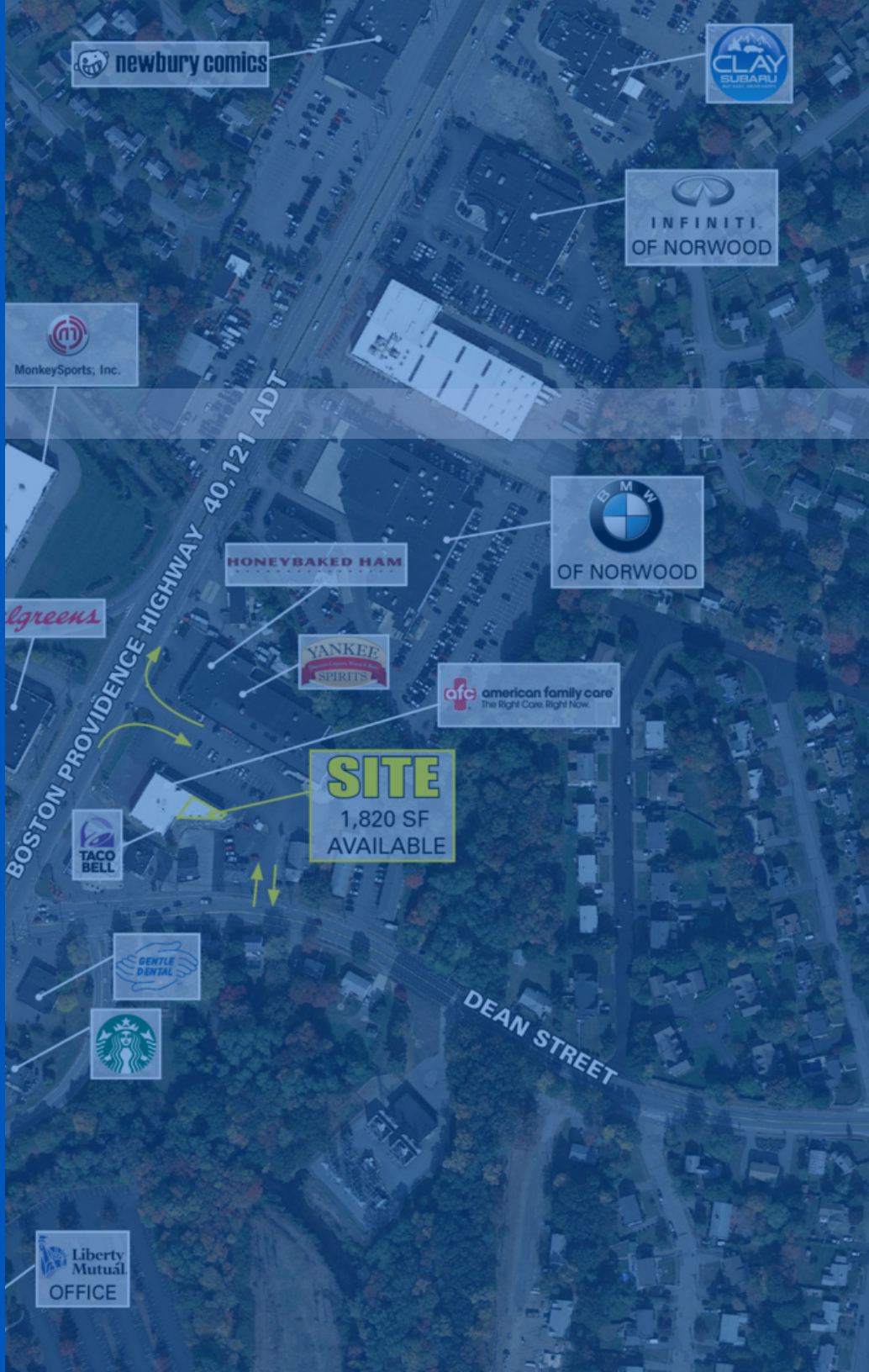
954 PROVIDENCE HIGHWAY • 1,820 SF AVAILABLE • RETAIL



ADDITIONAL  
PHOTOS

954 PROVIDENCE HIGHWAY • 1,820 SF AVAILABLE • RETAIL





NORWOOD, MA

# 954 PROVIDENCE HIGHWAY

1,820 SF AVAILABLE | RETAIL

**PAT GALLAGHER**

617.239.3645

PGALLAGHER@ATLANTICRETAIL.COM

**JACK LYMAN**

860.391.1736

JLYMAN@ATLANTICRETAIL.COM



**BOSTON**

THE PRUDENTIAL CENTER

55 HUNTINGTON AVENUE

BOSTON, MA 02199

617.239.3600

**ALBANY**

**ATLANTA**

**CHARLOTTE**

**LOS ANGELES**

**NEW YORK CITY**

**ORLANDO**

**PITTSBURGH**

**WEST PALM BEACH**

[WWW.ATLANTICRETAIL.COM](http://WWW.ATLANTICRETAIL.COM)

[LINKEDIN.COM/COMPANY/ATLANTIC-RETAIL-PROPERTIES](https://www.linkedin.com/company/atlantic-retail-properties)

[INSTAGRAM.COM/ATLANTIC\\_RETAIL](https://www.instagram.com/atlantic_retail)

**REALTY RESOURCES** **CHAINLINKS**  
RETAIL ADVISORS

© ATLANTIC RETAIL 2024 The information above has been obtained from sources believed reliable. While we do not doubt its accuracy, we have not verified it and make no guarantee, warranty or representation about it.