

**BOSWELL WEST  
MEDICAL OFFICE  
BUILDING**

**Floor 03**

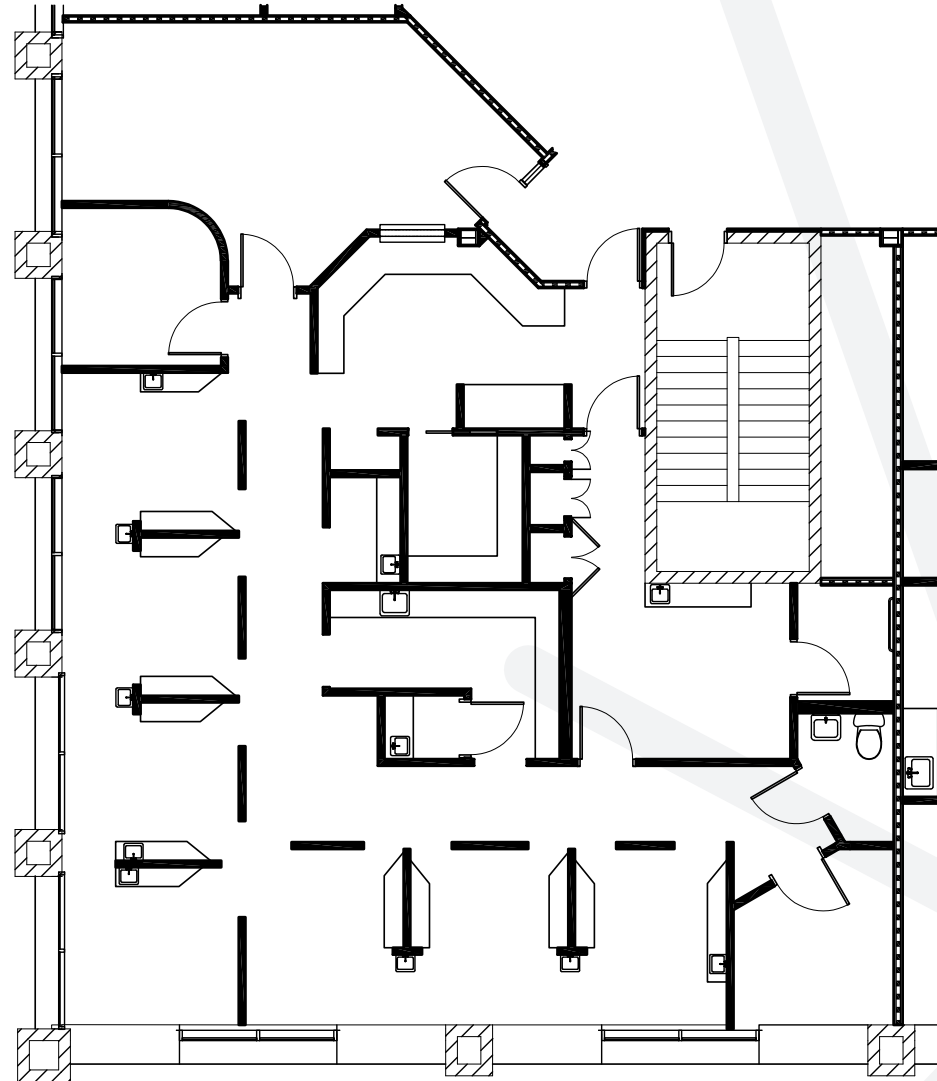
Suite 384

AS-BUILT

2,508 SF

AVAILABLE

\*CONTIGUOUS TO SUITES  
375 FOR 4,917 SF



**RACHAEL THOMPSON**  
Senior Vice President  
602.513.5122  
rachael.thompson@kidder.com

**PERRY GABUZZI, CCIM**  
Senior Vice President  
602.513.5116  
perry.gabuzzi@kidder.com