



**FOR LEASE  
SECOND GENERATION RESTAURANT**

**1228 SEAWALL BLVD  
GALVESTON, TX 77550**



# FOR LEASE

# 1228 SEAWALL

## PROPERTY HIGHLIGHTS



Second generation restaurant space on Seawall Blvd!



Adjacent to Benno's Cajun Seafood & walking distance to Porretto Beach and Hotel Lucine



Near major attractions including Galveston Island Historical Pleasure Pier, Grand Galvez, and Murdoch's

## GALVESTON MARKET



8.1 million visitors and tourists annually



22,192 average daily visitors



Approximately 62,000 commuting employees per day



\$1.3 billion in economic impact



Over 6,000 hotel rooms on the island



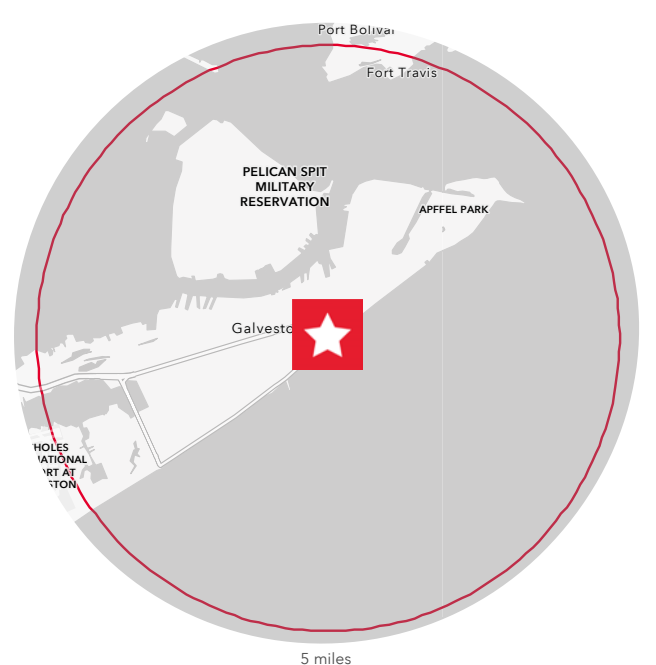
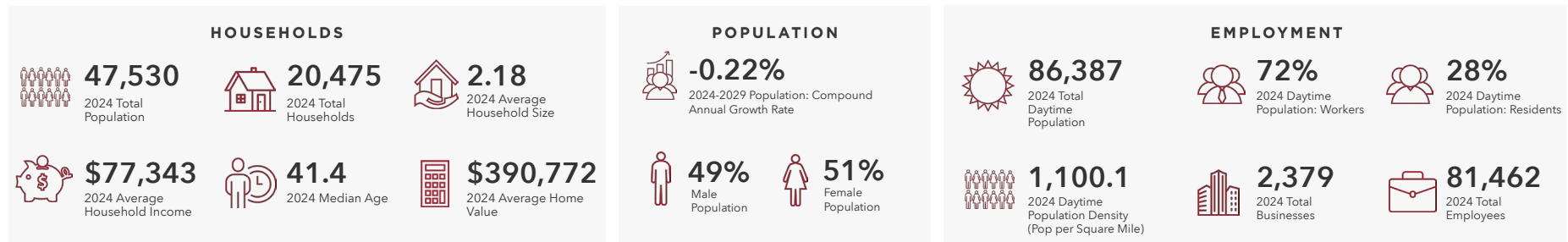
No. 2 tourism attraction in Texas, behind the Alamo

# DEMOGRAPHICS



1228 SEAWALL BLVD, GALVESTON, TX 77550

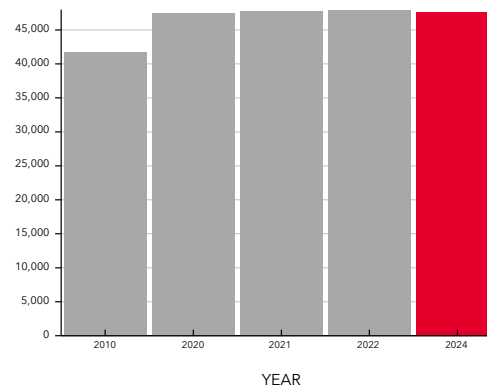
5 MILES



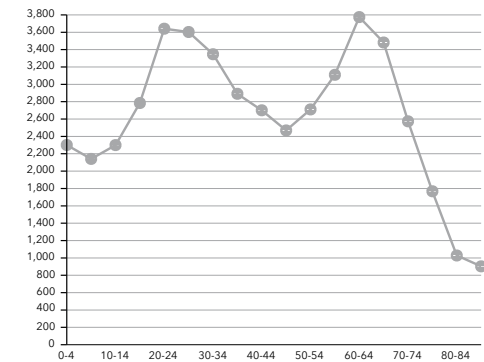
## EDUCATIONAL ATTAINMENT



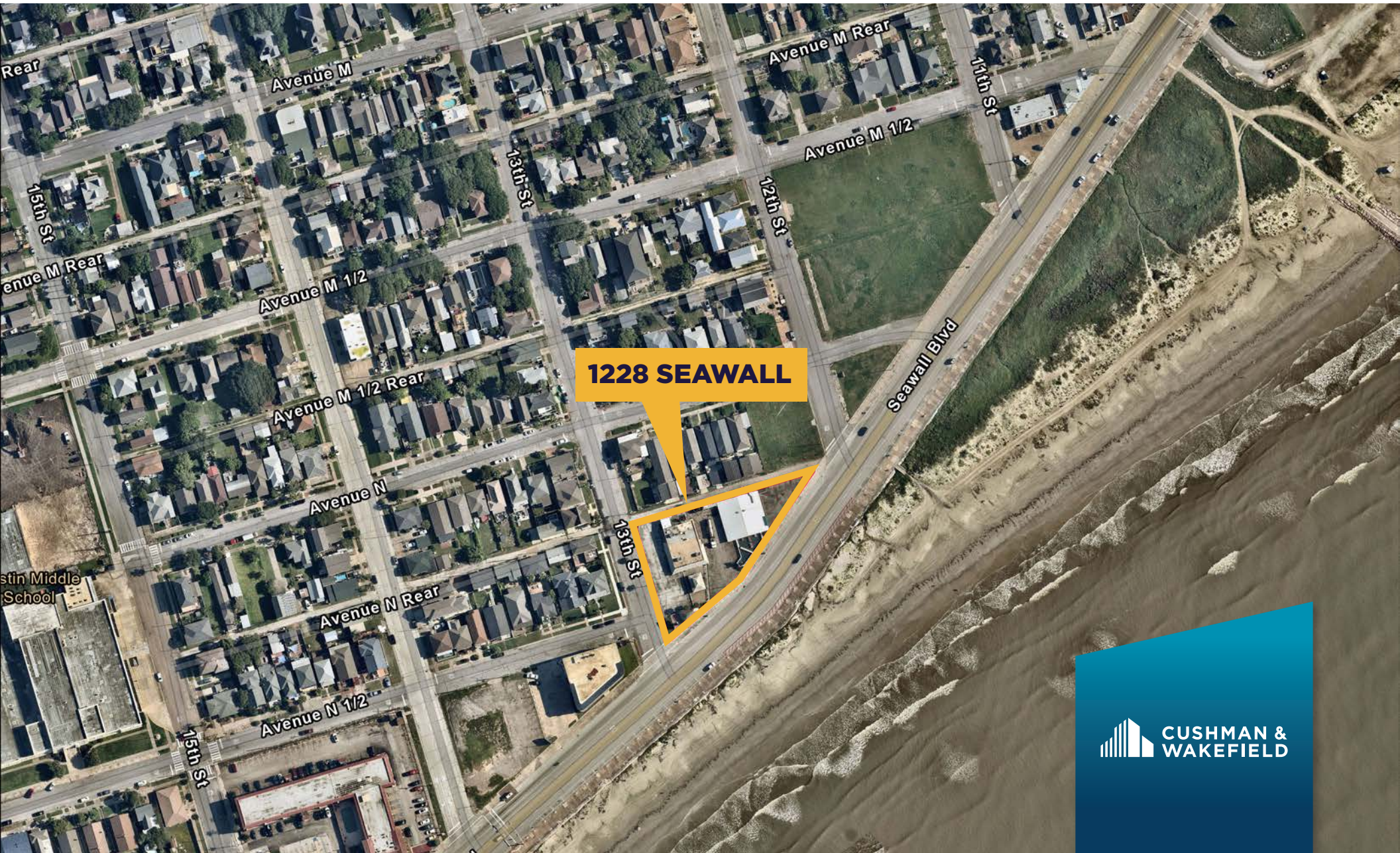
## POPULATION TIME SERIES 2010-2024



## POPULATION BY AGE GROUP



# AERIAL



Single Family Homes ranging from \$300k - \$900k



**MOODY MANSION**  
Galveston Island, Texas



**SITE**



**Galveston Jetty**

**Seawall Urban Park**

**DEMOGRAPHICS**

	1 Mile	3 Miles	5 Miles
Avg Household Income	\$74,930	\$68,608	\$71,545
2023 Population	9,640	31,636	45,253
2023 Households	4,328	12,734	18,380



## FOR INFORMATION:

### **MICHAEL HADDAD**

Associate

+1 713 826 0178

[michael.haddad@cushwake.com](mailto:michael.haddad@cushwake.com)

### **MICHAEL BURGOWER**

Associate

+1 713 331 1747

[michael.burgower@cushwake.com](mailto:michael.burgower@cushwake.com)

