

544 West 27th Street

WEST CHELSEA/HUDSON YARDS
NEW YORK, NY



NEWMARK

Property Details

Location

South block between Tenth Avenue and Eleventh Avenue

Approximate Size

Second Floor	5,000 SF
Third Floor	2,500 SF
Fifth Floor - Front Portion	2,500 SF
Fifth Floor - Rear Portion	2,500 SF
Fifth Floor Total	5,000 SF

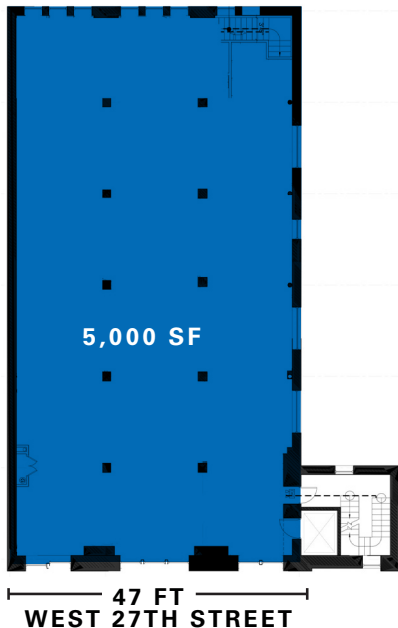
Term

Negotiable

Possession

Immediate

Second Floor



Neighbors

Marquee New York, Queensyard, Electric Lemon, Chelsea Factory, Porchlight, Mermaid Inn, Gagosian Gallery, Pace Gallery, Cucina Alba, Lisson Gallery, Lisson Gallery, Unix, Cookshop, Commes De Garcon, Dia Art Foundation and Starbucks Reserve

Comments

Loft spaces

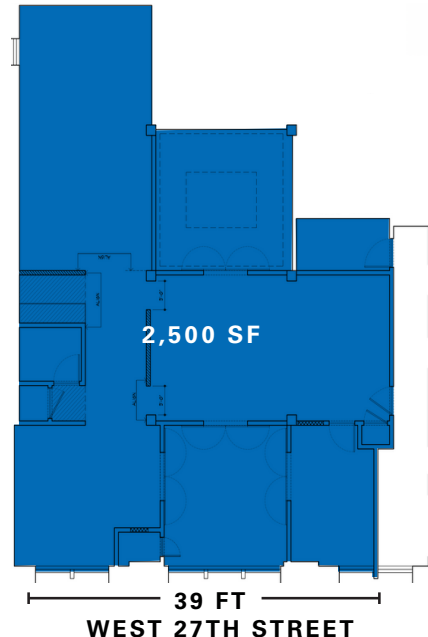
Natural light on three sides

Elevator building with 24-hour buzzer access

Distinctive spaces with hardwood floors

Second Floor has a built kitchen with type-1 venting and gas

Third Floor



Comments (cont.)

Second Floor has natural light on three sides

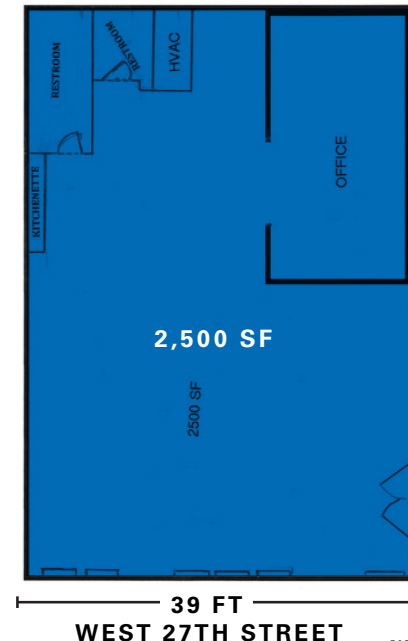
Second Floor is divisible

Third Floor has a pantry and a private bathroom

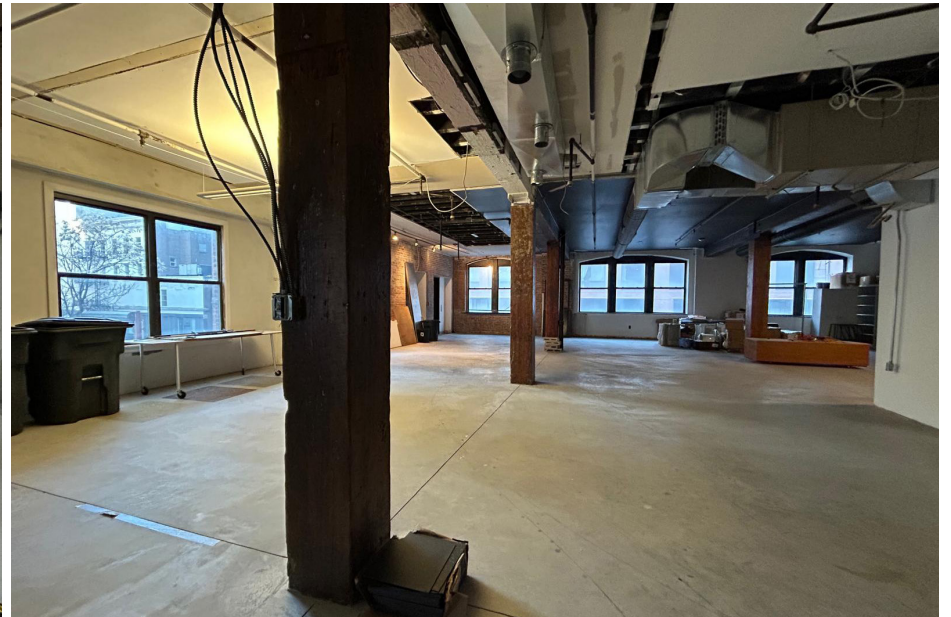
Fifth Floor front portion has a pantry and two private bathrooms

Fifth Floor front portion can be combined with Fifth Floor rear portion or can be leased separately

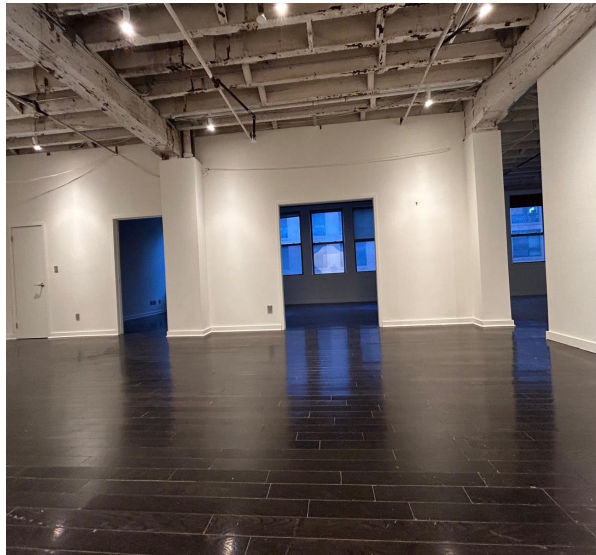
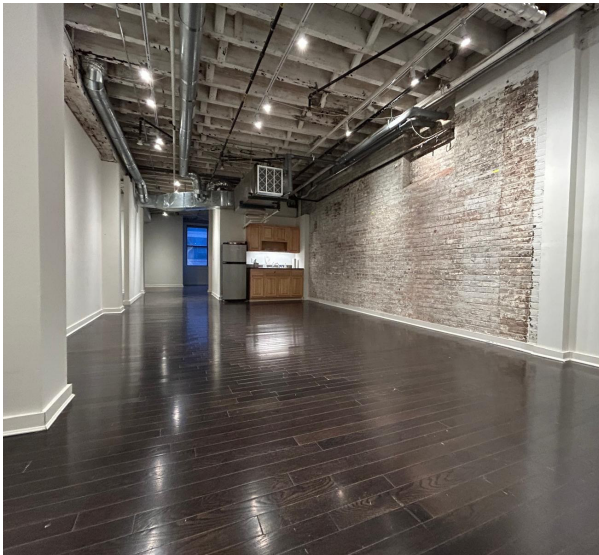
Fifth Floor - Front Portion



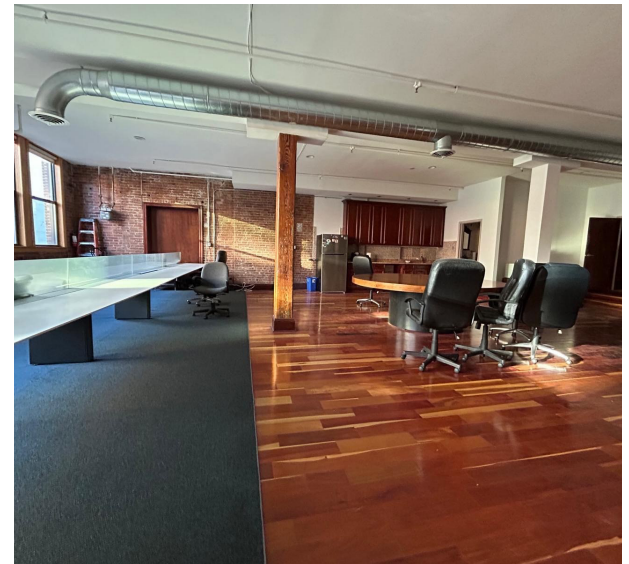
Interior Images - Second Floor



Interior Images - Third Floor



Interior Images - Fifth Floor Front Portion



544 WEST 27TH STREET



CONTACT

Andrew Stern
 t 212-351-9353
 Andrew.Stern@nrmk.com

Ravi Idnani
 t 212-916-2938
 Ravi.Idnani@nrmk.com

nrmk.com

©2026 NEWMARK Licensed in New York as Newmark Retail, Real Estate Broker

The information contained herein has been obtained from sources deemed reliable but has not been verified and no guarantee, warranty or representation, either express or implied, is made with respect to such information. Terms of sale or lease and availability are subject to change or withdrawal without notice.