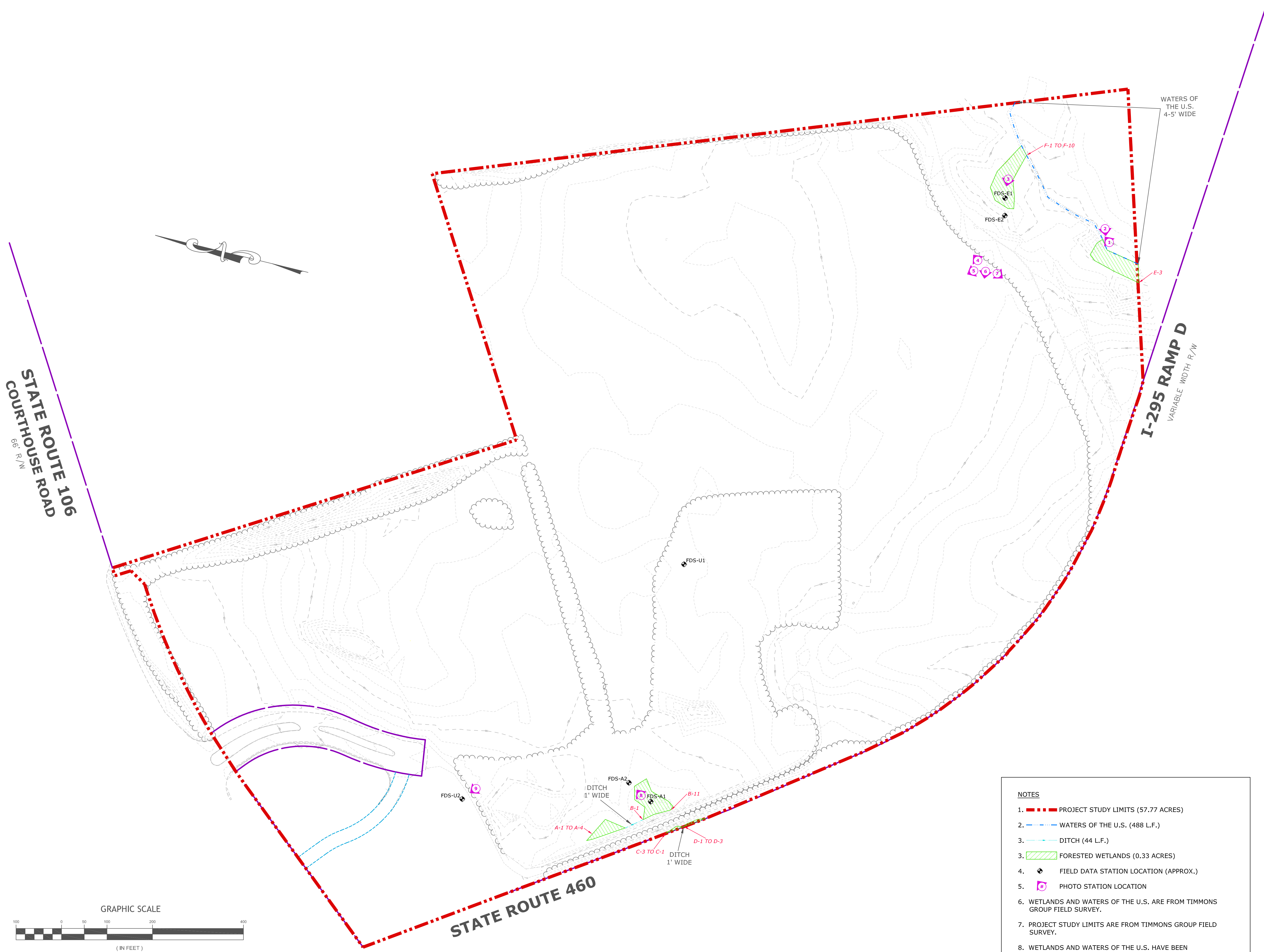


U:_204_25747-Diamond_Park\DWG\Sheet\Exhibit\25747C-WD2.dwg | Plotted on 6/11/2008 10:06 AM | by Brian Breissinger



- NOTES**
1. --- PROJECT STUDY LIMITS (57.77 ACRES)
 2. --- WATERS OF THE U.S. (488 L.F.)
 3. --- DITCH (44 L.F.)
 3. FORESTED WETLANDS (0.33 ACRES)
 4. FIELD DATA STATION LOCATION (APPROX.)
 5. PHOTO STATION LOCATION
 6. WETLANDS AND WATERS OF THE U.S. ARE FROM TIMMONS GROUP FIELD SURVEY.
 7. PROJECT STUDY LIMITS ARE FROM TIMMONS GROUP FIELD SURVEY.
 8. WETLANDS AND WATERS OF THE U.S. HAVE BEEN CONFIRMED BY THE U.S. ARMY CORPS OF ENGINEERS IN A LETTER DATED JUNE 7, 2008 (COE PROJECT # NAO-2008-1161).

TIMMONS GROUP

DIAMOND PARK
PRINCE GEORGE COUNTY AND CITY OF PETERSBURG, VIRGINIA
WETLAND DELINEATION MAP

JOB NO. 25474
SHEET NO.

YOUR VISION ACHIEVED THROUGH OURS.

Site Development | Residential | Infrastructure | Technology

DATE	REVISION DESCRIPTION
5/21/08	ADDED SURVEY INFORMATION
6/5/08	ADDED PHOTO LOCATIONS

DRAWN BY: B. BREISSINGER
DESIGNED BY:
CHECKED BY: D. ARRINGTON
SCALE: 1"=100'

THIS DRAWING PREPARED AT THE
Corporate Headquarters
1001 Eoules Parkway | Richmond, VA 23225
TEL: 804-200-6500 FAX: 804-500-1010 www.timmons.com

These plans and associated documents are the exclusive property of TIMMONS GROUP and may not be reproduced in whole or in part and shall not be used for any purpose whatsoever, inclusive, but not limited to construction, bidding, and/or construction staking without the express written consent of TIMMONS GROUP.