

# // PROPERTY SUMMARY

## 2 Months Free Rent

with qualifying lease



### PROPERTY DESCRIPTION

Fantastic and affordable office space for lease in 4-plex on Spokane's North Bank. Just blocks from the new ONE Spokane Sports Stadium and Downtown.

### PROPERTY HIGHLIGHTS

- Modified Gross: Tenant pays pro rata share of water, sewer, garbage & electricity (Ste 1 = \$193/mo)
- Suites feature large, open configurations, kitchen spaces, and private bathrooms
- Free On-site Parking
- Secure Building with 24/7 Security Camera Monitoring
- Close to Riverfront Park, Kendall Yards, Spokane Arena, The Podium and Spokane County Campus

SPACES	LEASE RATE	SPACE SIZE
<b>Suite 1</b>	\$900 per month	984 SF

DEMOGRAPHICS	1 MILE	3 MILES	5 MILES
<b>Total Households</b>	5,777	55,013	111,594
<b>Total Population</b>	13,737	125,763	260,663
<b>Average HH Income</b>	\$37,862	\$46,285	\$50,573



// PRESENTED BY:

**STEPHEN BARBIERI**  
 COMMERCIAL LEASING & SALES MANAGER  
 509.344.4919  
 SBARBIERI@G-B.COM

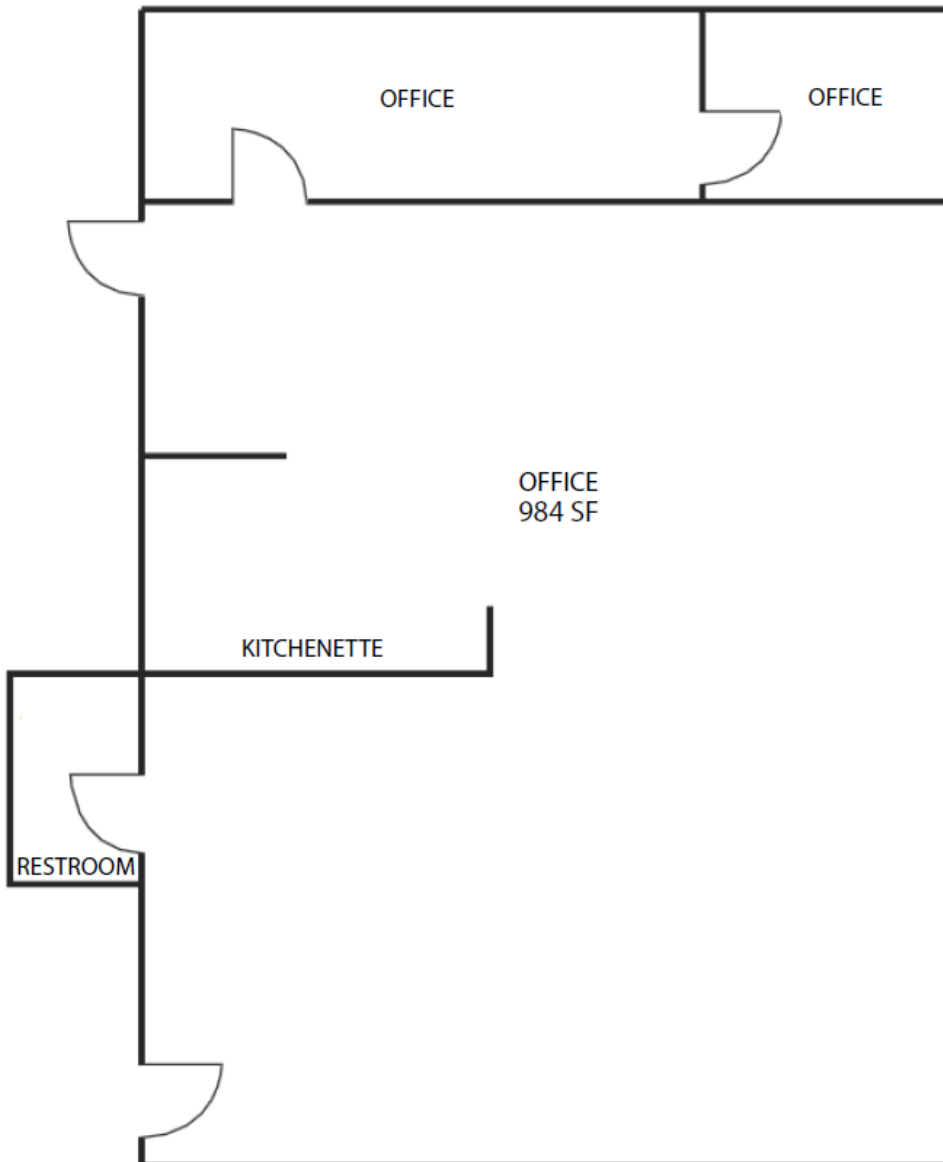
**KATIE BOHR**  
 COMMERCIAL BROKER & LEASING MANAGER  
 509.344.4906  
 KATIE.BOHR@G-B.COM



# // FLOOR PLAN



## 601 West Maxwell Ave Lower Level Suite 1 Floor Plan 984 SF



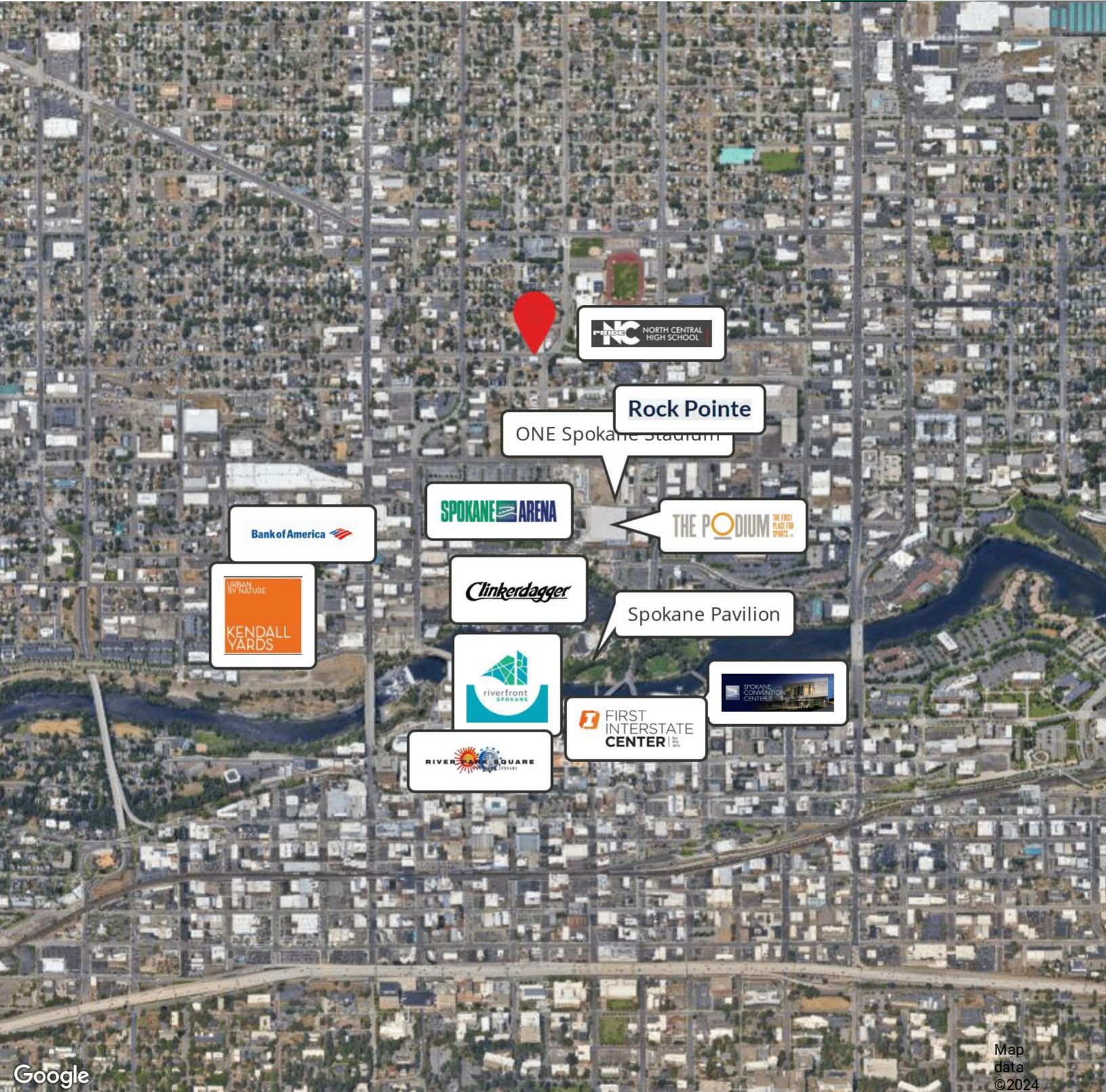
// PRESENTED BY:

**STEPHEN BARBIERI**  
COMMERCIAL LEASING & SALES MANAGER  
509.344.4919  
SBARBIERI@G-B.COM

**KATIE BOHR**  
COMMERCIAL BROKER & LEASING MANAGER  
509.344.4906  
KATIE.BOHR@G-B.COM



# // RETAILER MAP



Google

Map data ©2024

// PRESENTED BY:

**STEPHEN BARBIERI**  
COMMERCIAL LEASING & SALES MANAGER  
509.344.4919  
SBARBIERI@G-B.COM

**KATIE BOHR**  
COMMERCIAL BROKER & LEASING MANAGER  
509.344.4906  
KATIE.BOHR@G-B.COM

