

For **sublease**



# Oakpointe Office Building Sublease Available

9111 Jollyville Rd. Austin, TX 78759

## SPACE PROFILE

2,828 SF

Available SF

Suite 280

Targeted Space

\$11.00/SF/YR

Rental rate

\$13.36/SF/YR

OpEx (2025 Est.)

5/31/2028

Sublease Term Thru

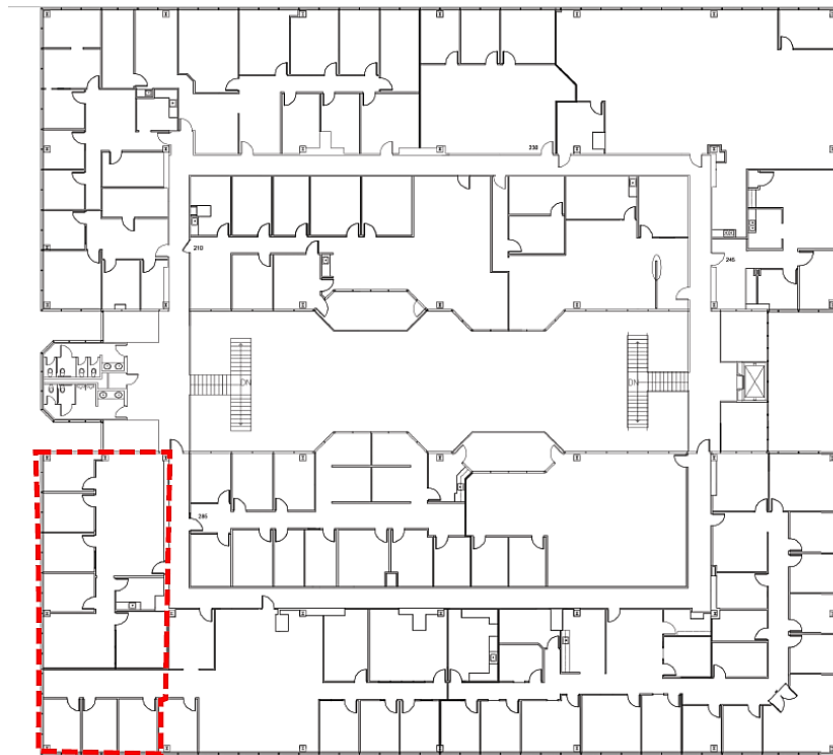
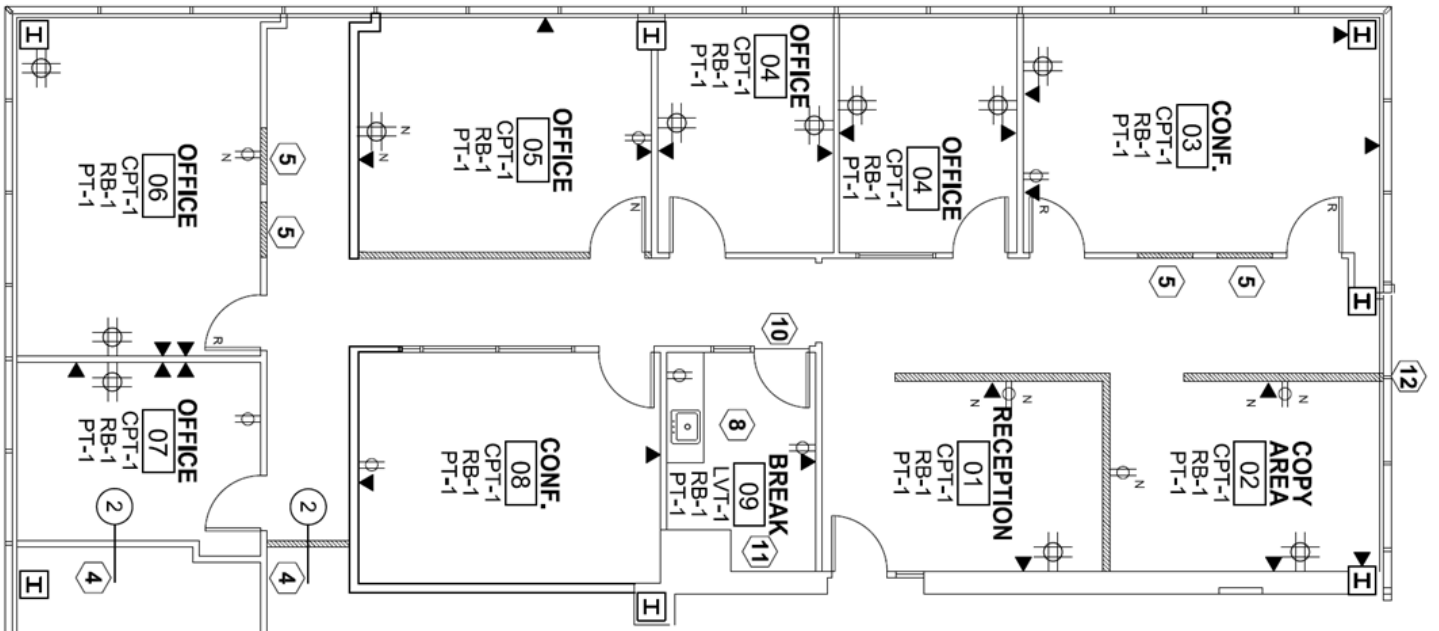
3.33/1,000 SF

Surface Parking (No Charge)

**savills**

SUITE 280

2,828 RSF





## PROPERTY OVERVIEW

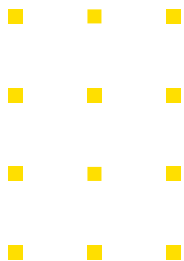
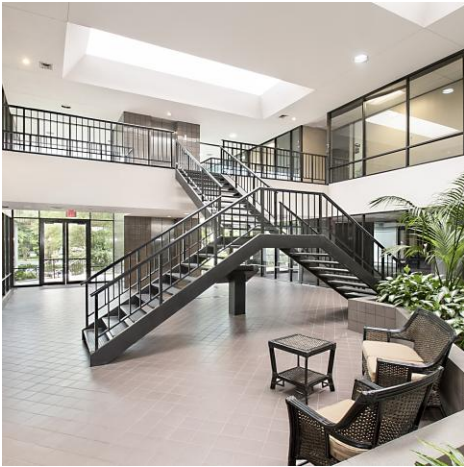
Free Ample Surface Parking

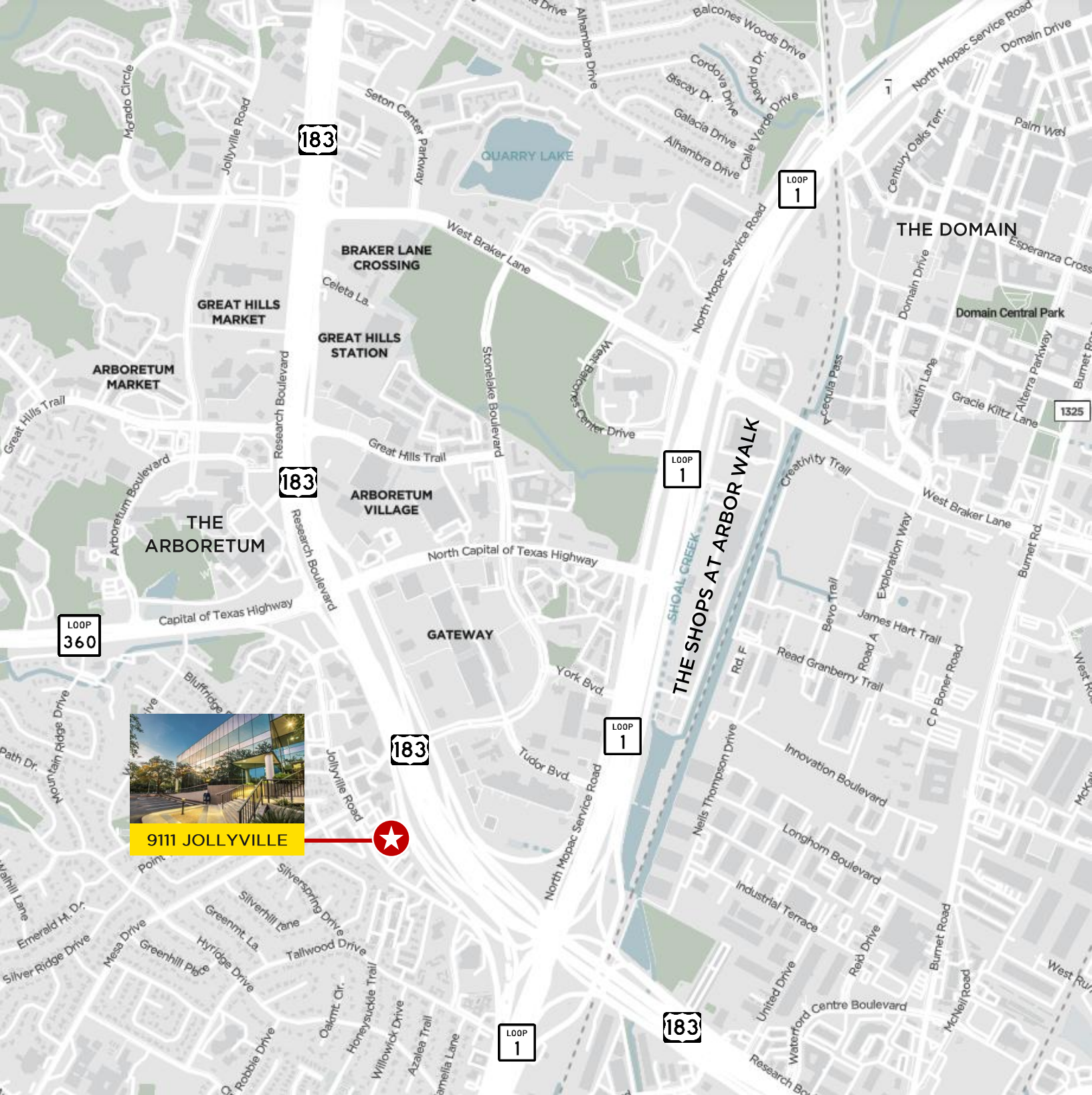
Covered Parking Available

Building Amenities Include: Indoor Greenscape, On-Site Postal Service, and After Hours HVAC

Close proximity to The Arboretum, The Domain, Gateway, and Great Hills Market

Easy access to MoPac Expressway, Highway 183, Loop 360, Research Boulevard, and Jollyville Road.





9111 JOLLYVILLE



**Jerry Frey**  
+1 512 657 4955  
[jfrey@savills.us](mailto:jfrey@savills.us)  
License #414517

**Hudson Hall**  
+1 512 256 8431  
[hhall@savills.us](mailto:hhall@savills.us)  
License #737753

© 2026 Savills. All rights reserved. The information contained in this communication has been obtained from a variety of sources believed to be reliable but has not been verified. NO WARRANTY OR REPRESENTATION, EXPRESS OR IMPLIED, IS MADE AS TO THE CONDITION OF THE PROPERTY OR ACCURACY OR COMPLETENESS OF THE INFORMATION CONTAINED HEREIN AND SAME IS SUBMITTED SUBJECT TO ERRORS, OMISSIONS, CHANGE OF PRICE, RENTAL OR OTHER CONDITIONS, WITHDRAWAL WITHOUT NOTICE AND TO ANY SPECIFIC CONDITIONS IMPOSED BY THE PROPERTY OWNER OR LESSOR.