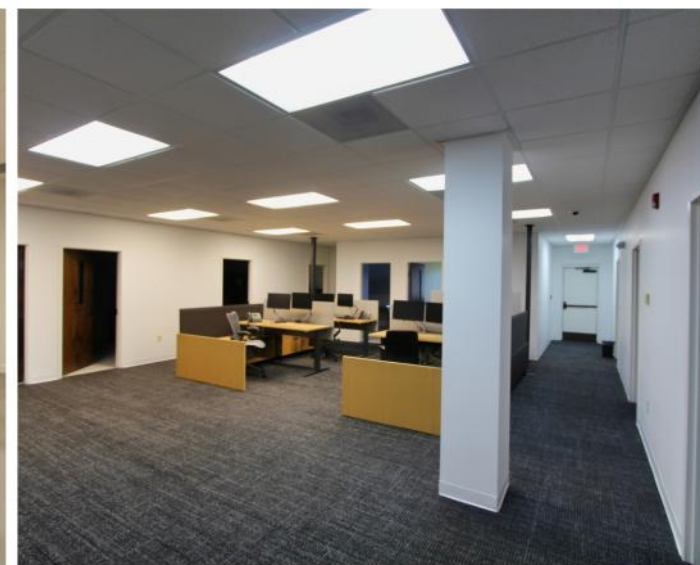




2141 ENTERPRISE DRIVE | PROFESSIONAL OFFICE | FOR LEASE



135 S Dargan St. Suite 301 | Florence, SC 29506 | Phone (843) 667-4999 | www.palmettocommercial.com

No warranty or representation is made as to the accuracy of the information contained herein.



PROFESSIONAL OFFICE | FOR LEASE | FLORENCE, SC

Property Description

Address: 2141 Enterprise Drive, Florence, SC 29501

Available: $\pm 10,395$ RSF

Year Built: 1995 Renovated: 2022

Construction: Single Story Masonry Building

Parking: 6.10/1 (± 133 Lined Spaces)

Zoning: Florence County - B6

Lot Size: ± 4.88 Acres

For Lease: **\$17.50/RSF, net of janitorial, telephone and internet**

Property Highlights

- Conveniently situated on Enterprise Drive within the Florence County Industrial Park, just off US Hwy 52 (West Lucas Street).
- The building underwent renovations in 2022 and ready for immediate occupancy in its current configuration.
- Current layout includes climate controlled warehouse with docking area, 8 private offices, mailroom, storage rooms, full breakroom, men and women restrooms, training room, conference room, open bull pen and workrooms.



135 S Dargan St. Suite 301 | Florence, SC 29506 | Phone (843) 667-4999 | www.palmettocommercial.com

No warranty or representation is made as to the accuracy of the information contained herein.

2141 ENTERPRISE DRIVE | FLOORPLAN

±10,395 RSF For Lease



135 S Dargan St. Suite 301 | Florence, SC 29506 | Phone (843) 667-4999 | www.palmettocommercial.com

No warranty or representation is made as to the accuracy of the information contained herein.

2141 ENTERPRISE DRIVE | FLORENCE, SC



SUBJECT

Distance to:	
Columbia, SC	±65 Miles
Charleston, SC	±98 Miles
Myrtle Beach, SC	±75 Miles
Charlotte, NC	±95 Miles



135 S Dargan St. Suite 301 | Florence, SC 29506 | Phone (843) 667-4999 | www.palmettocommercial.com

No warranty or representation is made as to the accuracy of the information contained herein.