

FOR SALE

*5,052 SF Office/Medical
Building For Sale in East
Los Angeles*

319 N SOTO ST
LOS ANGELES, CA 90033

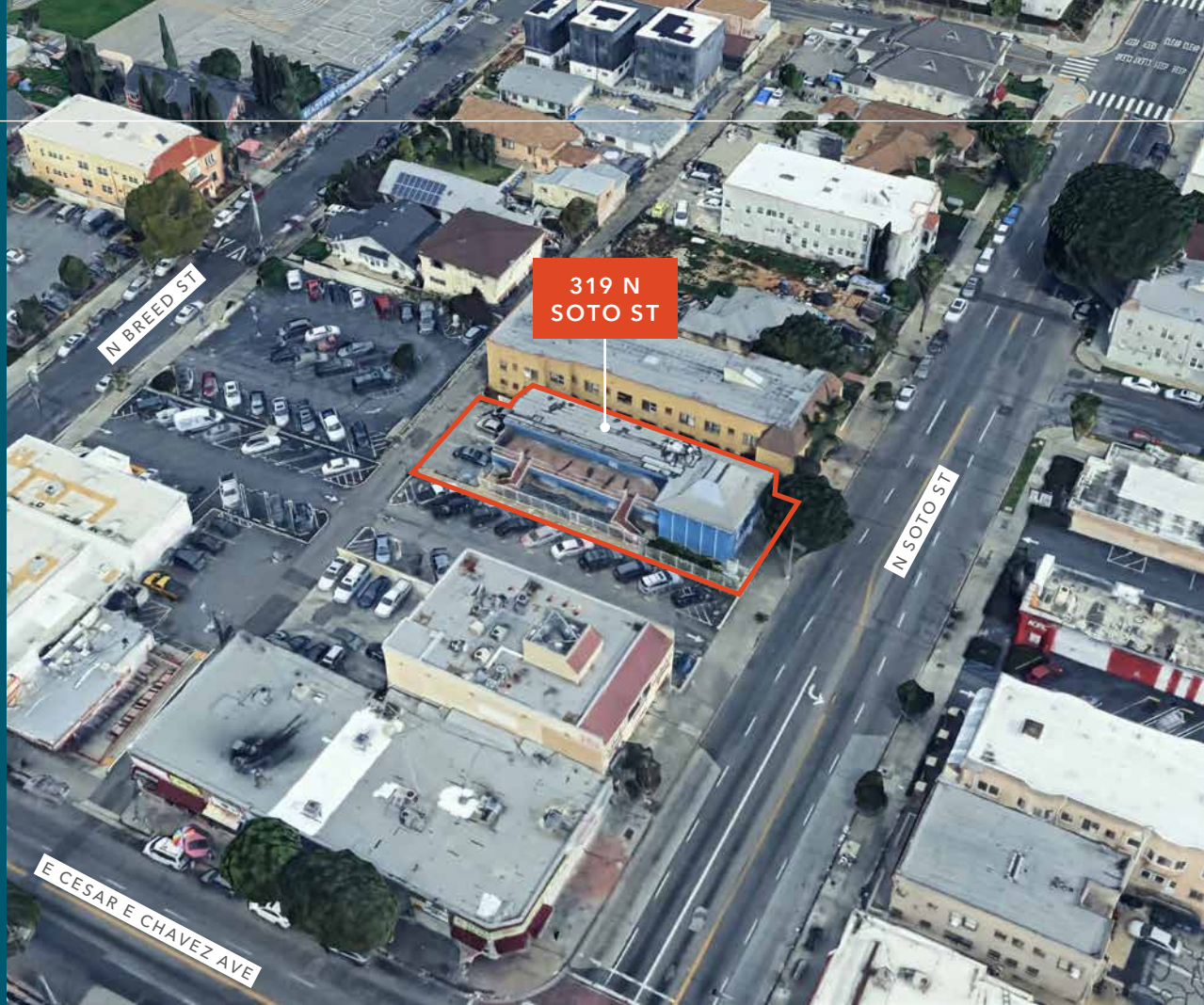
Ideal owner-user building

Value-add opportunity

On-site parking as well as ample surrounding
parking lots

Flexible layout for an office or medical use

2nd floor outdoor terrace





A well-located two-story office/medical building featuring ample nearby and on-site parking

BUILDING SIZE	5,052 SF
LAND SIZE	6,534 SF
YEAR BUILT	1969
LIST PRICE	\$750,000
BUILDING PRICE/SF	\$148
LAND PRICE/SF	\$114
PARKING	4 spaces
ZONING	C1
PARCEL NUMBER	5175-010-021

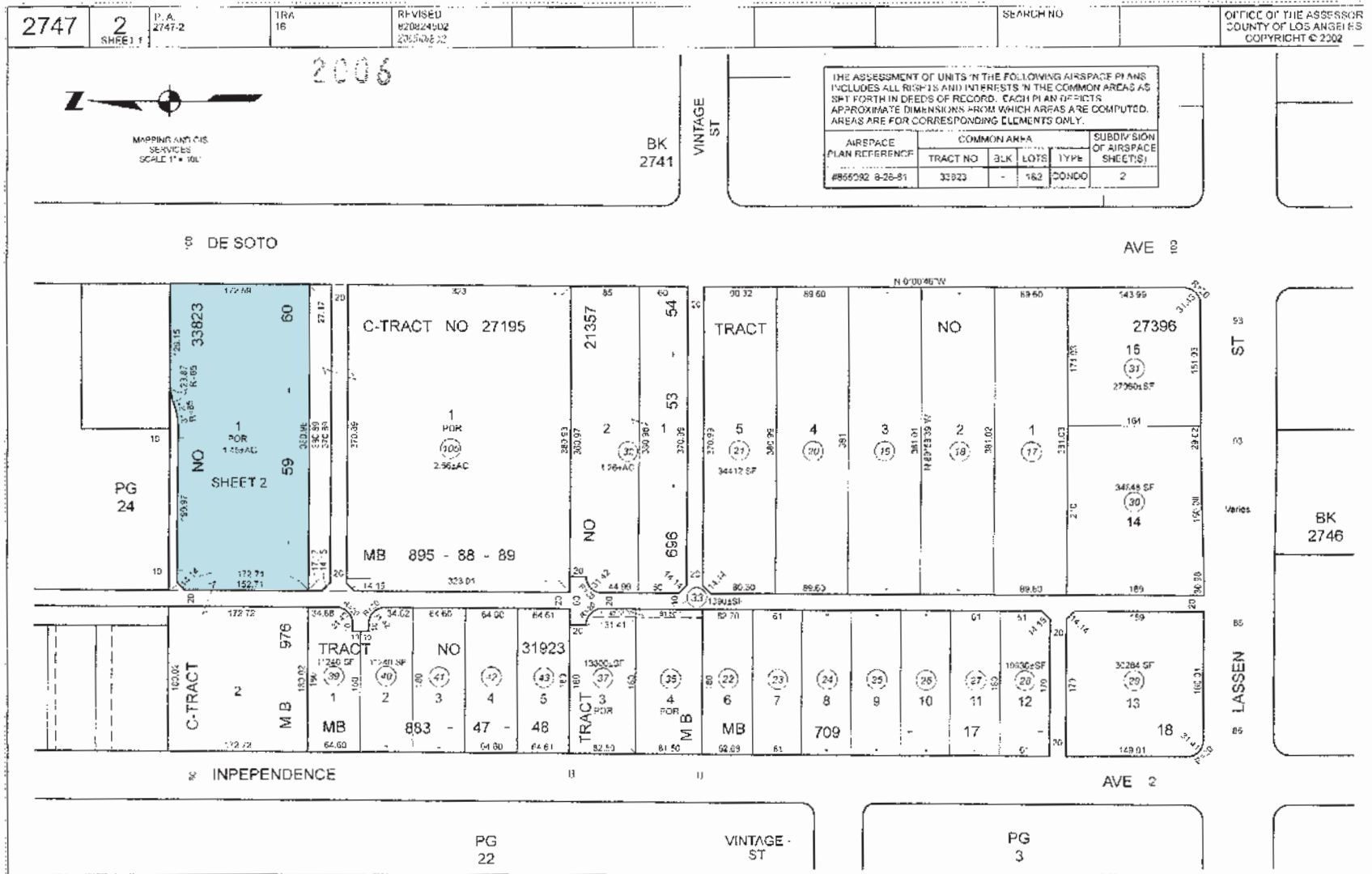
5,052 SF

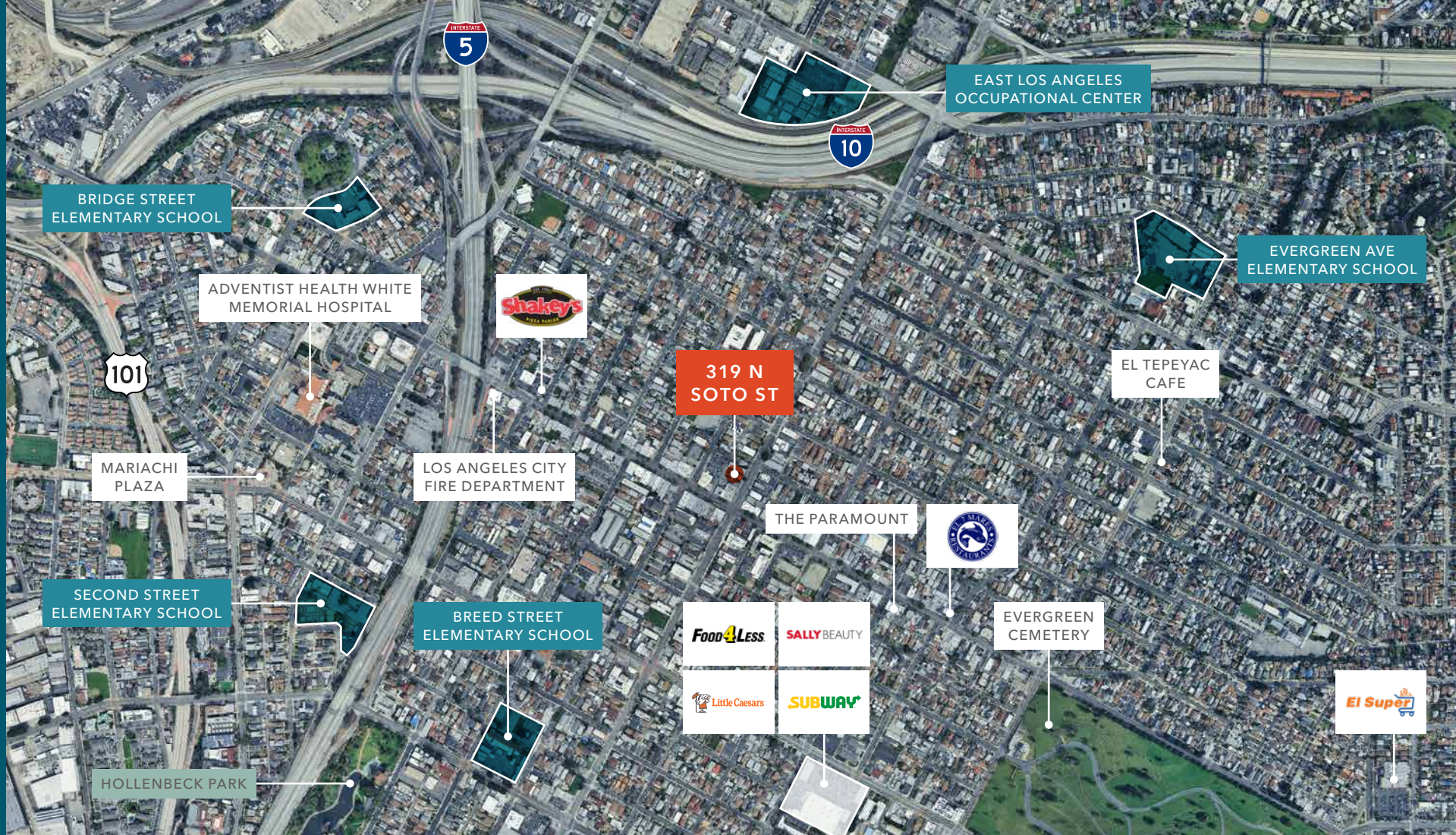
BUILDING SIZE

\$750K

LIST PRICE

PARCEL MAP





For more information, contact

JOHN ANTHONY, SIOB
 213.225.7218
 john.anthony@kidder.com
 LIC N° 01226464

CHRISTOPHER STECK, CCIM
 213.225.7231
 christopher.steck@kidder.com
 LIC N° 01841338

ANTHONYSTECKTEAM.COM
KIDDER.COM

This information supplied herein is from sources we deem reliable. It is provided without any representation, warranty, or guarantee, expressed or implied as to its accuracy. Prospective Buyer or Tenant should conduct an independent investigation and verification of all matters deemed to be material, including, but not limited to, statements of income and expenses. Consult your attorney, accountant, or other professional advisor. All Kidder Mathews designs are the sole property of Kidder Mathews. Branded materials and layouts are not authorized for use by any other firm or person.

