



FOR LEASE

1,560 TOTAL SQUARE FEET

OFFICE CONDO



CHAD WEEKS
612.619.9911
cweeks@arrowcos.com
arrowcos.com



JEFF PENFIELD
612.325.2067
jpenfield@arrowcos.com
arrowcos.com



PLYMOUTH TOWN OFFICE CENTRE
3515 PLYMOUTH BLVD., SUITE 105
PLYMOUTH, MN 55447

PROPERTY HIGHLIGHTS

- Don't miss out on this beautiful office space conveniently located in downtown Plymouth! This office condo offers a professional and comfortable work environment.
- Features include four (4) private offices, two (2) with windows, reception desk, file area, kitchenette & private bathroom.
- Great signage available on Plymouth Blvd.
- Perfect space for any small business company or professional firm looking for a home.
- Schedule your tour today!



PLYMOUTH TOWN OFFICE CENTRE
3515 PLYMOUTH BLVD., SUITE 105
PLYMOUTH, MN 55447

PROPERTY FACTS

- Built in 2004
- Main Level Office Condo
- Includes 4 offices, reception desk, kitchenette & private bathroom
- Signage available on Plymouth Blvd.



LEASE RATE:

Base Rent - \$16.50 / psf

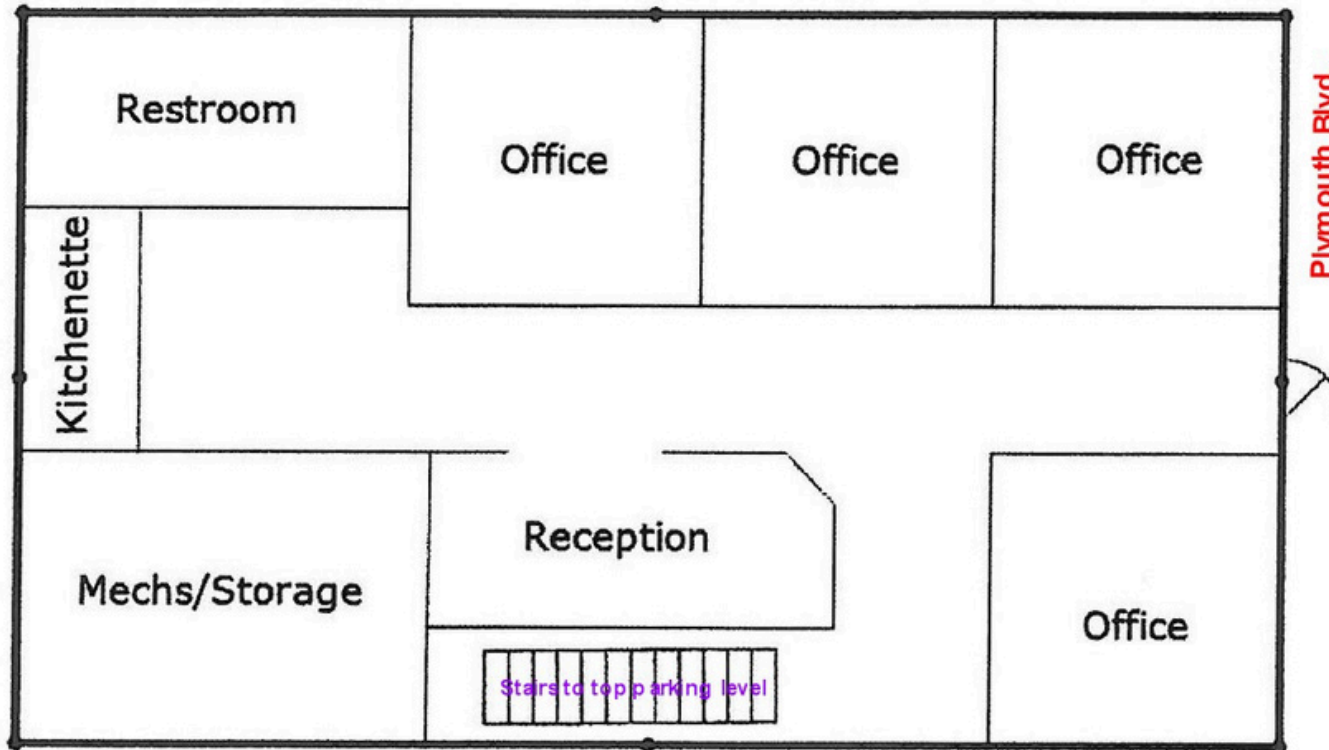
Taxes - \$5.88 / psf

Cam - \$4.23 / psf



PLYMOUTH TOWN OFFICE CENTRE
3515 PLYMOUTH BLVD., SUITE 105
PLYMOUTH, MN 55447

FLOORPLAN



PLYMOUTH TOWN OFFICE CENTRE
3515 PLYMOUTH BLVD., SUITE 105
PLYMOUTH, MN 55447

PHOTOS



PLYMOUTH TOWN OFFICE CENTRE
3515 PLYMOUTH BLVD., SUITE 105
PLYMOUTH, MN 55447

CITY INFO

PLYMOUTH IS HOME TO A VIBRANT BUSINESS COMMUNITY. FROM SMALL START UP COMPANIES TO MAJOR CORPORATIONS, YOU WILL FIND THEM IN PLYMOUTH. OUR DIVERSE ECONOMIC BASE INCLUDES NEARLY 50,000 JOBS. MAJOR INDUSTRIES INCLUDE INSURANCE, HIGH TECH RESEARCH, MEDICAL DEVICES AND LIGHT MANUFACTURING AS WELL AS PRINTING AND PUBLISHING.

NATIONALLY RECOGNIZED FOR ITS QUALITY OF LIFE, PLYMOUTH IS LOCATED 12 MILES NORTHWEST OF MINNEAPOLIS. IT OFFERS:

EXTENSIVE TRAILS AND PARKS

PICTURESQUE OPEN SPACES

STRONG NEIGHBORHOODS

DIVERSE RECREATION PROGRAMS

HIGHLY REGARDED SCHOOL DISTRICTS

A VARIETY OF LOCAL BUSINESSES

NEARBY SHOPPING AND ENTERTAINMENT DISTRICTS

EASY ACCESS TO DOWNTOWN MINNEAPOLIS AND ITS WIDE ARRAY OF CULTURAL AND SPORTS VENUES.

BEST PLACE TO LIVE

PLYMOUTH WAS NAMED MONEY MAGAZINE'S NUMBER ONE BEST PLACE TO LIVE IN 2008 FOR CITIES WITH POPULATIONS OF 50,000 TO 300,000. THE CITY STAYED IN THE TOP DOZEN WHEN THE MAGAZINE REPEATED THE RANKINGS IN 2010.

LOCATION, LOCATION, LOCATION

MANY MAJOR HIGHWAYS RUN THROUGH OR ARE CLOSE TO PLYMOUTH, MAKING IT READILY ACCESSIBLE TO ALL WITHIN THE METROPOLITAN AREA. INTERSTATE 494 RUNS THROUGH PLYMOUTH AS DOES HWY. 55. HWY. 169 IS ON THE CITY'S EASTERN BORDER AND I-394 IS WITHIN FOUR MILES FROM THE CENTER OF PLYMOUTH.



PLYMOUTH TOWN OFFICE CENTRE
3515 PLYMOUTH BLVD., SUITE 105
PLYMOUTH, MN 55447