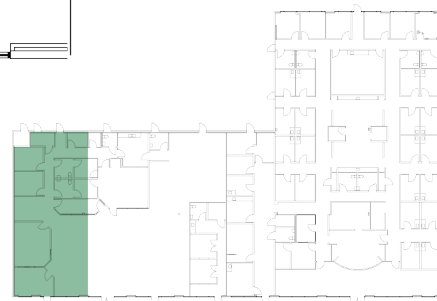
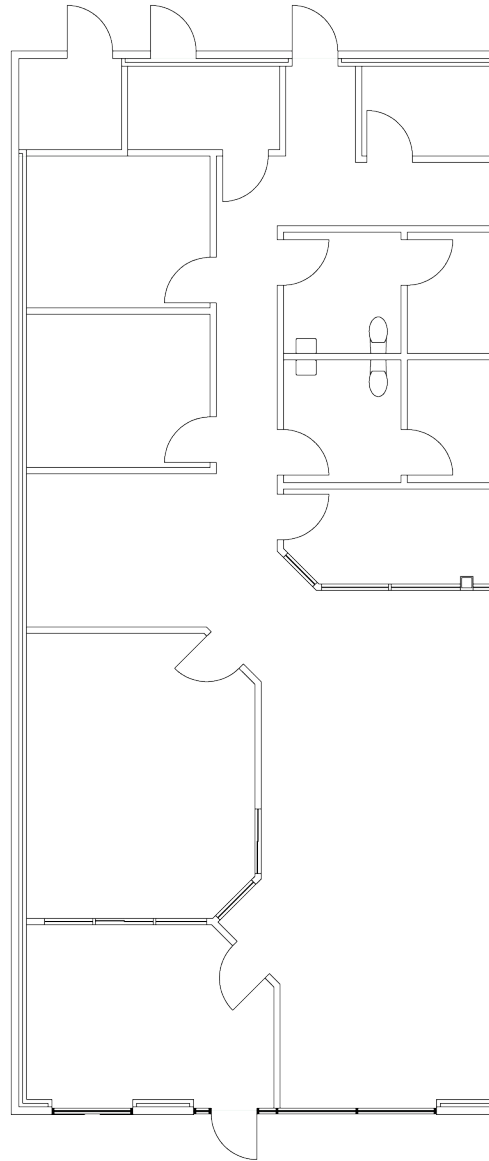


# SUITE PLAN

**Rowlett Medical Office Building**  
5501 Gordon Smith Drive  
Rowlett, TX 75089

**SUITE 100**  
2,124 RSF



## For Leasing Information

Contact Regional Leasing Director  
Jinny Saad at (512) 961-7336  
[Jinny.Saad@Lillibridge.com](mailto:Jinny.Saad@Lillibridge.com)

