



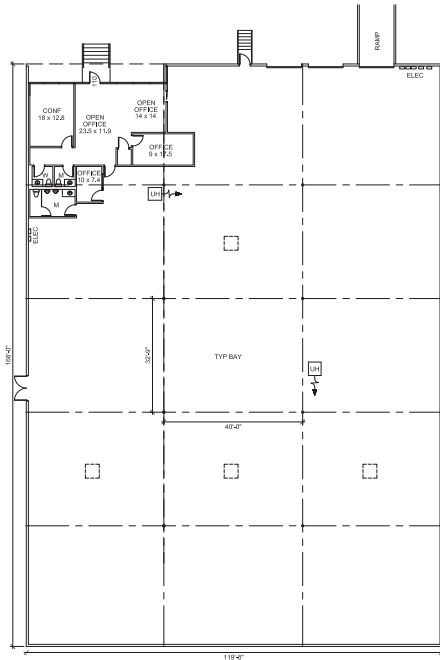
20,160 SF AVAILABLE

4020 LA REUNION PARKWAY | DALLAS, TEXAS 75212

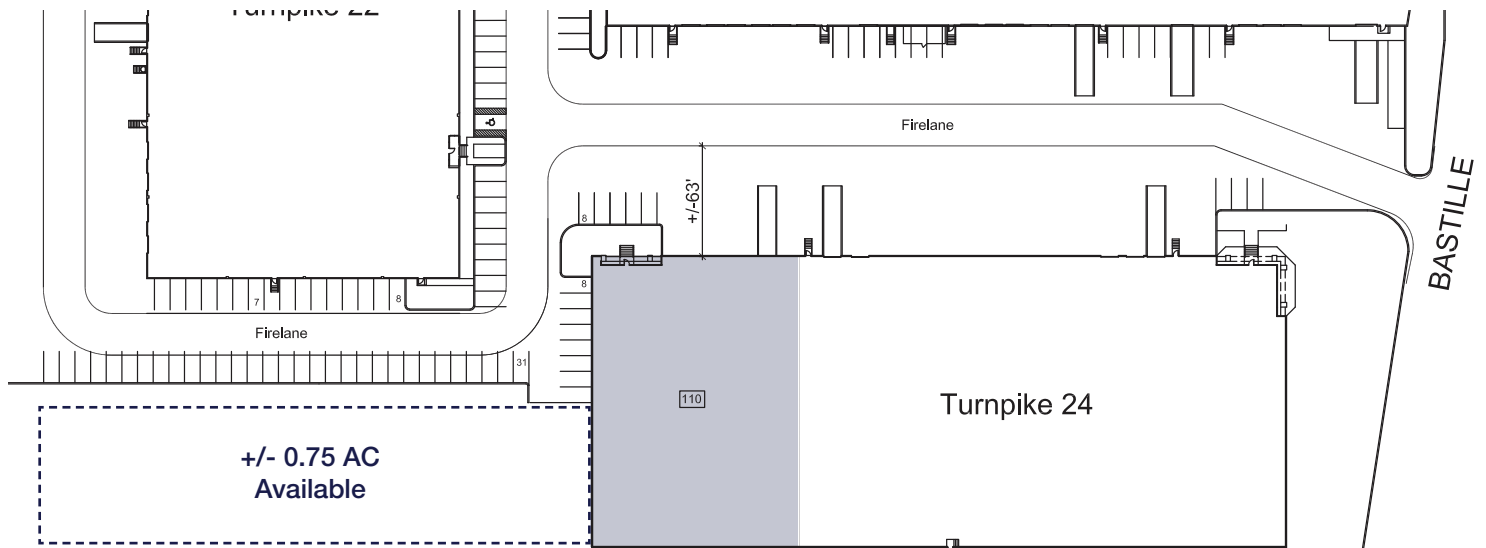


John Gorman
jgorman@holtlunsford.com
214.920.9800

Suite 110 | 20,160 SF



SITE PLAN





4020 LA REUNION PARKWAY | DALLAS, TEXAS 75212

PROPERTY FEATURES

- 20,160 SF available
 - 1,575 SF office
 - 18,585 SF warehouse
- 24' clear height
- Fully sprinklered
- Three (3) 10'x10' dock high doors
- One (1) 10'x10' dock high door with ramp
- 40' x 32'9" column spacing
- 24 hour park security services through Turnpike Association
- Immediate access Interstate 30 & Loop 12
- 4 miles west of downtown Dallas



John Gorman
jgorman@holtlunsford.com
214.920.9800

