

ZILER ARCHITECTS
 A PROFESSIONAL ARCHITECTURAL CORPORATION

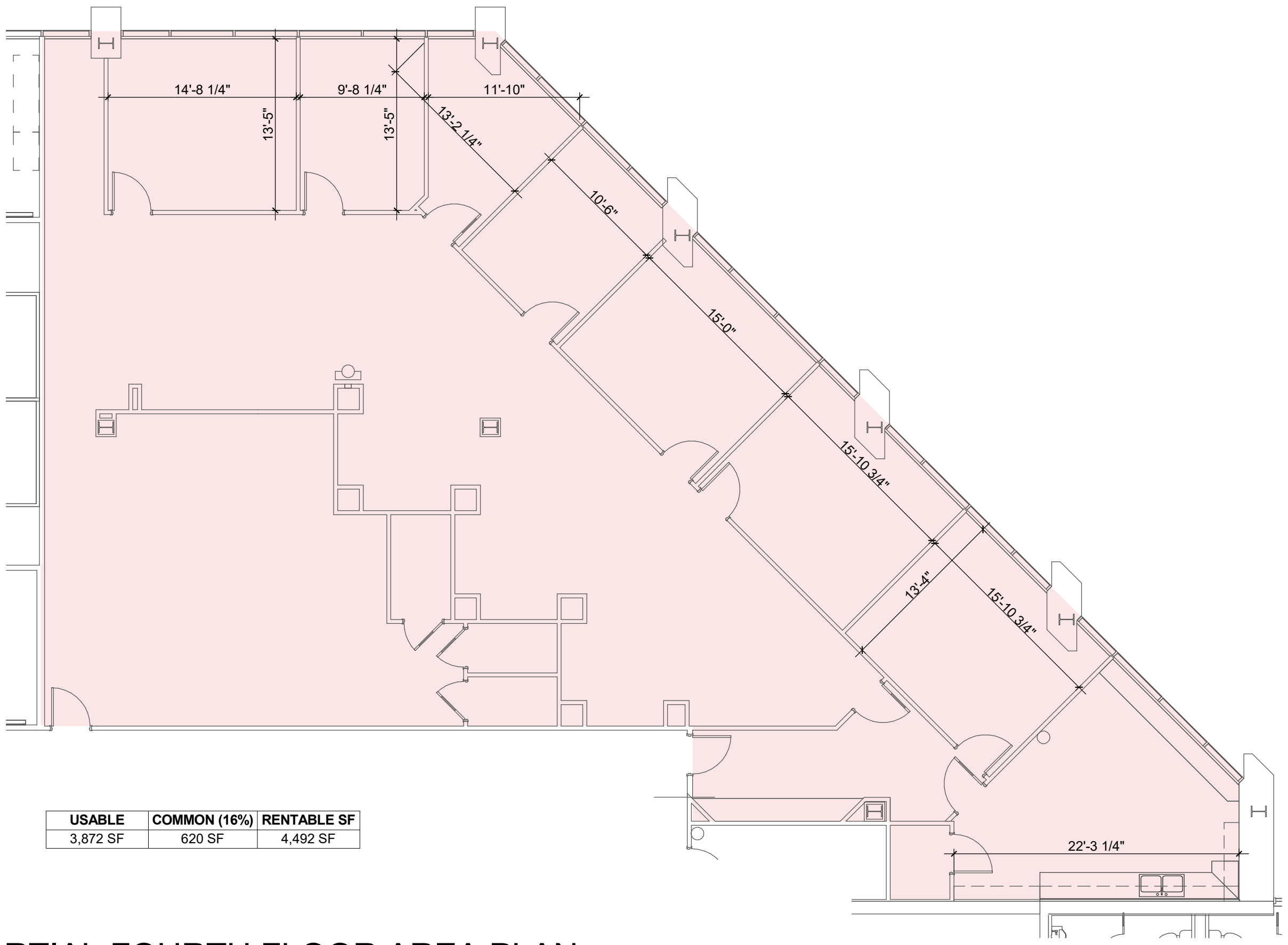
JAMES O. ZILER, ARCHITECT
 SEAN R. PRIMEAUX, ARCHITECT
 101 Calco Boulevard
 Lafayette, Louisiana 70503
 Ph: 337-269-6326
 10610 Florida Boulevard
 Walker, Louisiana 70785
 Ph: 225-424-6990
 www.zilerarchitects.net

DOCUMENTS PREPARED BY ZILER ARCHITECTS ARE INSTRUMENTS OF THE ARCHITECT'S SERVICE FOR USE SOLELY WITH RESPECT TO THIS PROJECT. THE ARCHITECT SHALL RETAIN ALL COMMON LAW, STATUTORY AND OTHER RESERVED RIGHTS, INCLUDING THE COPYRIGHT. THEY ARE NOT TO BE USED BY THE CONTRACTOR OR ANY SUBCONTRACTOR, MATERIAL OR EQUIPMENT SUPPLIERS OR ANYONE FOR OTHER PROJECTS OR FOR ADDITIONS TO THIS PROJECT WITHOUT THE SPECIFIC WRITTEN CONSENT OF ZILER ARCHITECTS.

RECORD DRAWINGS FOR:
VERSAILLES CENTER
 102 VERSAILLES BLVD.
 LAFAYETTE, LOUISIANA 70501

NOT FOR CONSTRUCTION

DATE ISSUED	07/24/24
REVISED	-
PLOT DATE	7/24/2024 9:15:42 AM
DRAWN BY	SRP
CHECKED BY	SRP
PROJECT NO.	2417
SHEET NO.	AC4.1
	OF 0



USABLE	COMMON (16%)	RENTABLE SF
3,872 SF	620 SF	4,492 SF

1 PARTIAL FOURTH FLOOR AREA PLAN

SCALE: 1/8" = 1'-0"

E:\024\2024\TENANT\2417\Versailles_Center\03_Drawing\ARCH\REV\07/24/24\Versailles_Center_02417.dwg