



## Lafayette Place Shopping Center

3619 Commerical Drive, Indianapolis, IN

### PROPERTY HIGHLIGHTS

- A vibrant shopping and cultural destination that includes the newly developed La Flaca entertainment venue, the International District Community Center, Saraga International Grocery, and more
- Great visibility and access from both Lafayette Road and 38th Street with great proximity to I-65 and downtown Indianapolis
- More than 390,000 SF of commercial/retail space with flexible options
- Ample free parking
- Updated, colorful exteriors
- Locally owned and managed. Hablamos español!

### SPACE HIGHLIGHTS

Possibilities are endless for this great commercial space, located near the newly-opened La Flaca entertainment venue. The unit features a large open space with plenty of sunlight and storefront and six private office spaces, making it a great candidate for specialty retail, fitness or wellness center, training facility, and more! Contact us today for a showing.

**Unit Number:** 3723

**Size:** 3,800 SF

**Rental Rate:** \$18/psf/NNN

**Zoning:** C5 - Commercial

**Available:** Immediately



317.513.2216

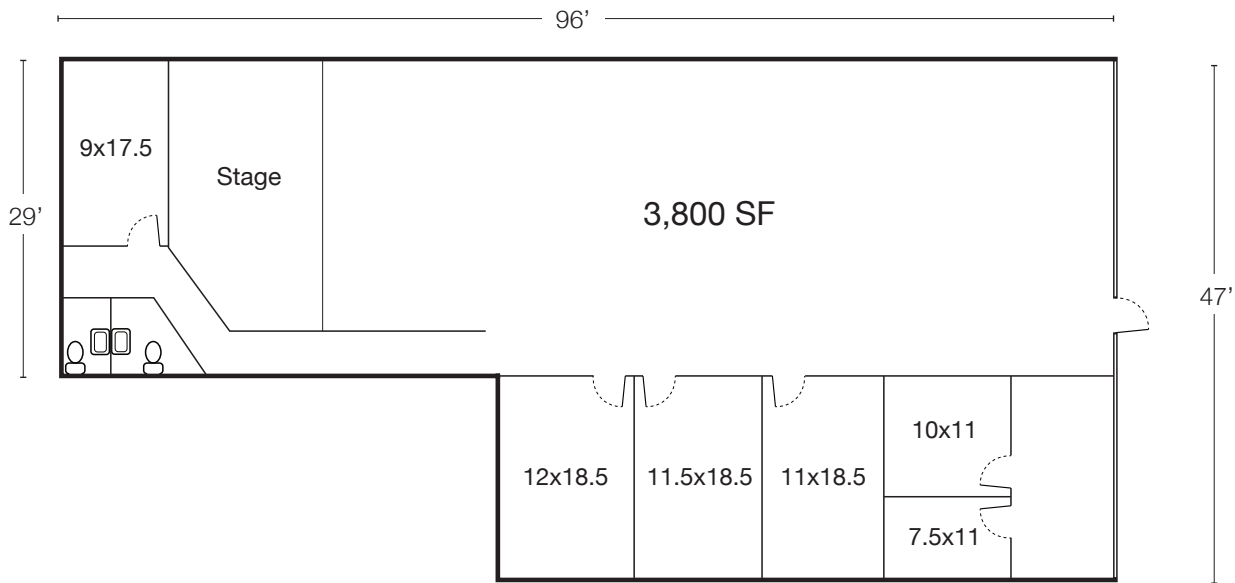


leasing@sojoscapital.com

# Lafayette Place Shopping Center

3619 Commerical Drive, Indianapolis, IN

## Unit 3723 Floor Plan



## Location



317.513.2216



leasing@sojoscapital.com