



FOR LEASE: RITZ GARDEN PLAZA

265 San Jacinto River Road, Lake Elsinore, CA

Property Information

- **Multi-Tenant Professional Office**
- Corner Unit Available
- Exterior Building Signage Opportunity
- Occupied by a Salon
- Private, fenced parking lot
- Mature landscaping
- Monument signage available
- **Suite 105: +/- 2,256 SF**
- **Lease Rate: \$1.85/SF, MG**



More Information: Christopher J. Masino, SIOR
(951) 795-4556

41707 Winchester Rd | Suite 300 | Temecula | CA | 92590

The information contained herein has been obtained from a variety of sources and Masino Commercial, its agents, representatives and property owner make no warranty or representation regarding its accuracy or completeness. The delivery of this information does not constitute an offer and no transaction shall be considered binding until sales or lease agreement has been fully executed by all parties.



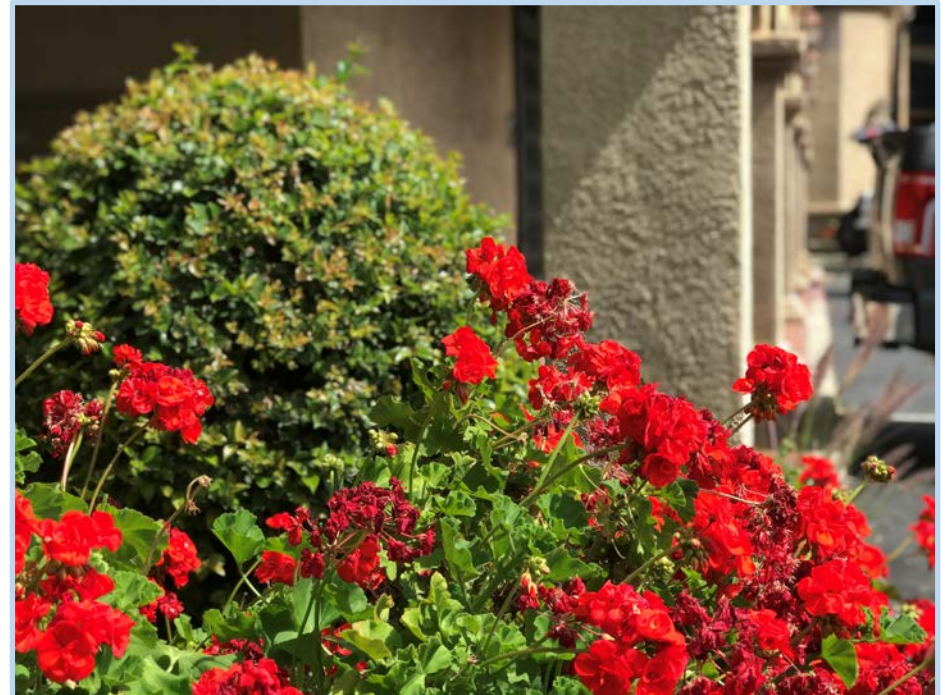
FOR LEASE: RITZ GARDEN PLAZA

265 San Jacinto River Road, Lake Elsinore, CA

Selected Images



Private, Fenced Parking Lot



Mature Landscaping

41707 Winchester Rd | Suite 300 | Temecula | CA | 92590

The information contained herein has been obtained from a variety of sources and Masino Commercial, its agents, representatives and property owner make no warranty or representation regarding its accuracy or completeness. The delivery of this information does not constitute an offer and no transaction shall be considered binding until sales or lease agreement has been fully executed by all parties.



FOR LEASE: RITZ GARDEN PLAZA

265 San Jacinto River Road, Lake Elsinore, CA

Selected Images



Aerial View to North



Aerial View to East

41707 Winchester Rd | Suite 300 | Temecula | CA | 92590

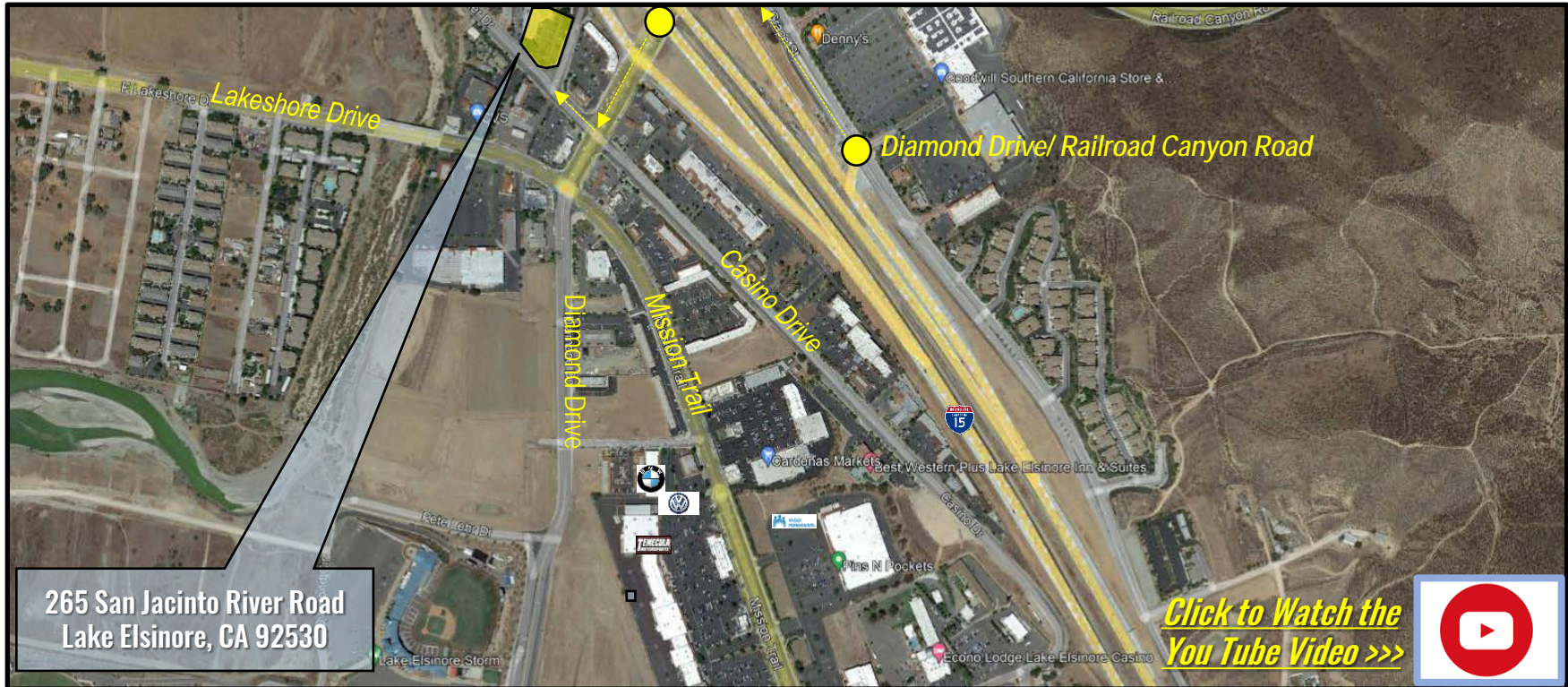
The information contained herein has been obtained from a variety of sources and Masino Commercial, its agents, representatives and property owner make no warranty or representation regarding its accuracy or completeness. The delivery of this information does not constitute an offer and no transaction shall be considered binding until sales or lease agreement has been fully executed by all parties.



FOR LEASE: RITZ GARDEN PLAZA

265 San Jacinto River Road, Lake Elsinore, CA

Local Area Map



41707 Winchester Rd | Suite 300 | Temecula | CA | 92590

The information contained herein has been obtained from a variety of sources and Masino Commercial, its agents, representatives and property owner make no warranty or representation regarding its accuracy or completeness. The delivery of this information does not constitute an offer and no transaction shall be considered binding until sales or lease agreement has been fully executed by all parties.



LOCAL EXPERTISE. EXCEPTIONAL RESULTS.

We offer over 20 years of experience in commercial real estate to provide you with an exceptional value and immediate results. **Contact us today** to discuss your next commercial real estate requirement.

www.masinocommercial.com

**READY TO TAKE
THE NEXT STEP?**

Call Us Today!
(951) 795-4550



Christopher J. Masino, SIOR

BRE License #: 01352110

cmasino@masinoindustrial.com



41707 Winchester Rd | Suite 300 | Temecula | CA | 92590

The information contained herein has been obtained from a variety of sources and Masino Commercial, its agents, representatives and property owner make no warranty or representation regarding its accuracy or completeness. The delivery of this information does not constitute an offer and no transaction shall be considered binding until sales or lease agreement has been fully executed by all parties.