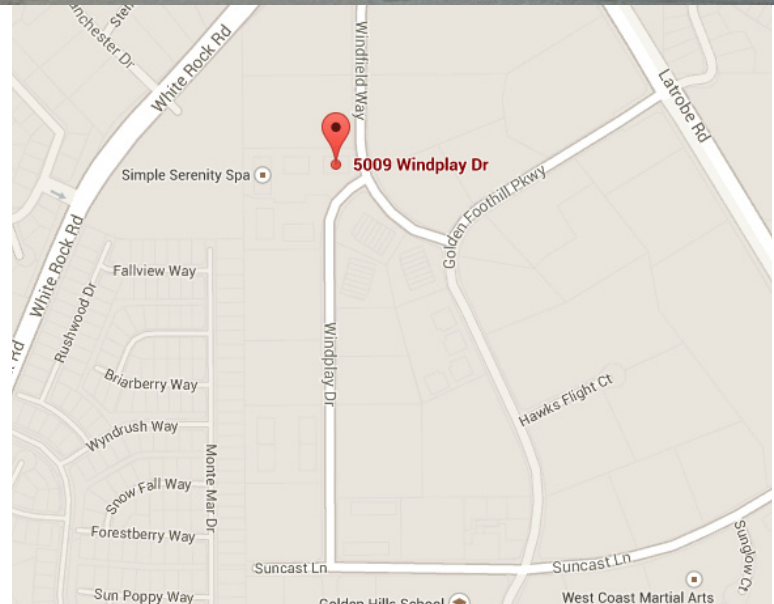


OFFICE SPACE AVAILABLE



PROPERTY HIGHLIGHTS

- Suite 2: +/- 2,900 SF Office/Warehouse
- \$0.85/ RSF Modified Gross
- Private restrooms
- Attractive space with abundant windows
- Ample parking
- Located in the El Dorado Hill Business Park
- Close to Town Center shopping and restaurants
- Easy access to Hwy. 50
- TI Available
- Roll up door potential w/ Flex buildout



For more information, please contact:

BOB KUHL

Senior Vice President

916.235.9885

bob@cemocommercial.com

BRE Lic. #: 00606862

www.cemocommercial.com

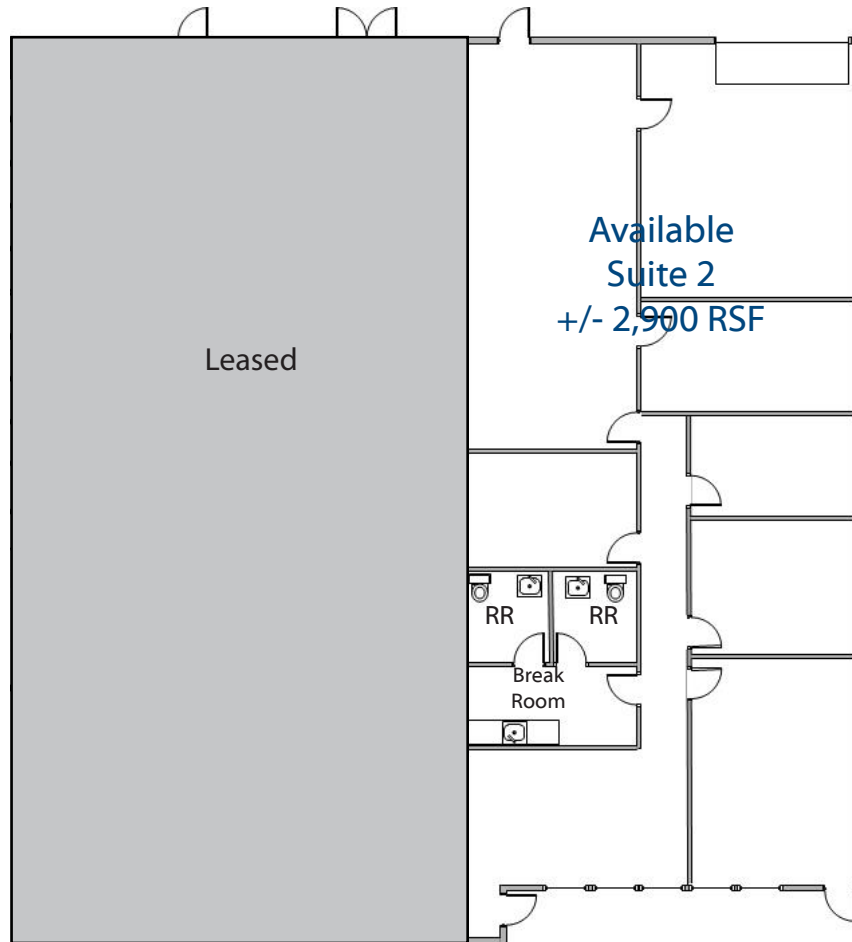
KELLY MCGINNIS

Administrative Assistant

916.235.9884

kelly@cemocommercial.com

Windplay Business Center
5009 Windplay Drive
El Dorado Hills, CA 95762



*For more information,
please contact:*

BOB KUHL
Senior Vice President
916.235.9885
bob@cemocommercial.com
BRE Lic. #: 00606862

KELLY MCGINNIS
Administrative Assistant
916.235.9884
kelly@cemocommercial.com

View all of our
available properties

To use this code:
Download a QR Reader on
your smart phone and scan

