

101 N. Clinton Street
Chicago, IL 60661

WEST LOOP SUBLEASE
Retail Space



EDGEMARK

CONTACT
INFORMATION

MATT SMETANA
630.572.5632
mismetana@edgemarkllc.com

MIKE WESLEY
630.572.5610
mwesley@edgemarkllc.com

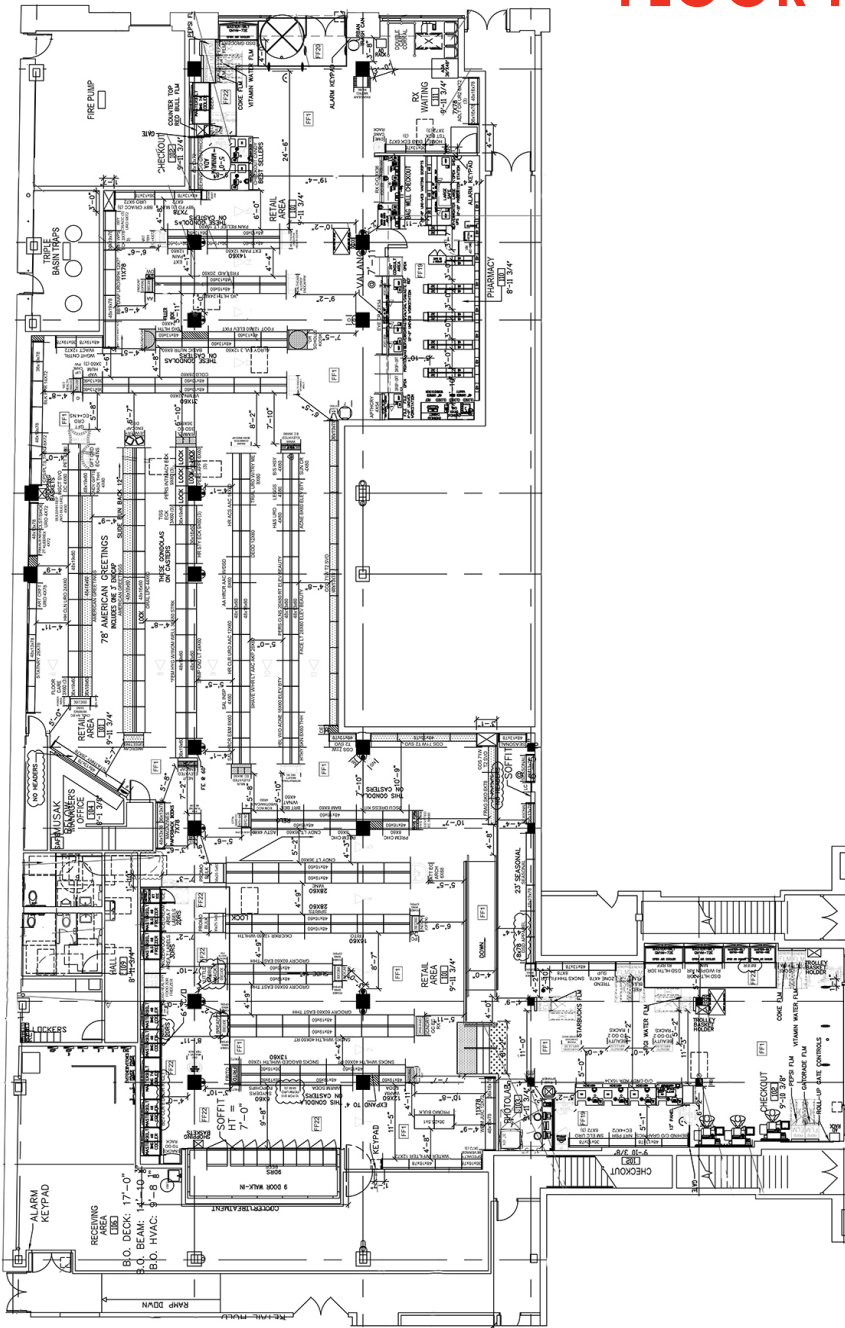
EDGEMARK COMMERCIAL REAL ESTATE SERVICES LLC
2215 York Road, Suite 210
Oak Brook, IL 60523
630.472.1010
www.edgemarkllc.com

Clinton Street

FLOOR PLAN

WEST LOOP SUBLEASE
101 N. Clinton Street
Chicago, IL 60661

- **13,529 SF former CVS Space**
- Located in Ogilvie Station with over 106,000 riders daily.
- Excellent daytime population and demographics.
- The West Loop is a desirable location due to its dynamic mix of businesses, residents and visitors.
- Both interior and exterior entrances.



**OGILVIE STATION
INTERIOR ENTRANCE**

AREA RETAILERS



INTERIOR ENTRANCE

WEST LOOP SUBLEASE

101 N. Clinton Street Chicago, IL 60661

Walk Score
98

Walker's Paradise

Daily errands do not require a car.

Transit Score
100

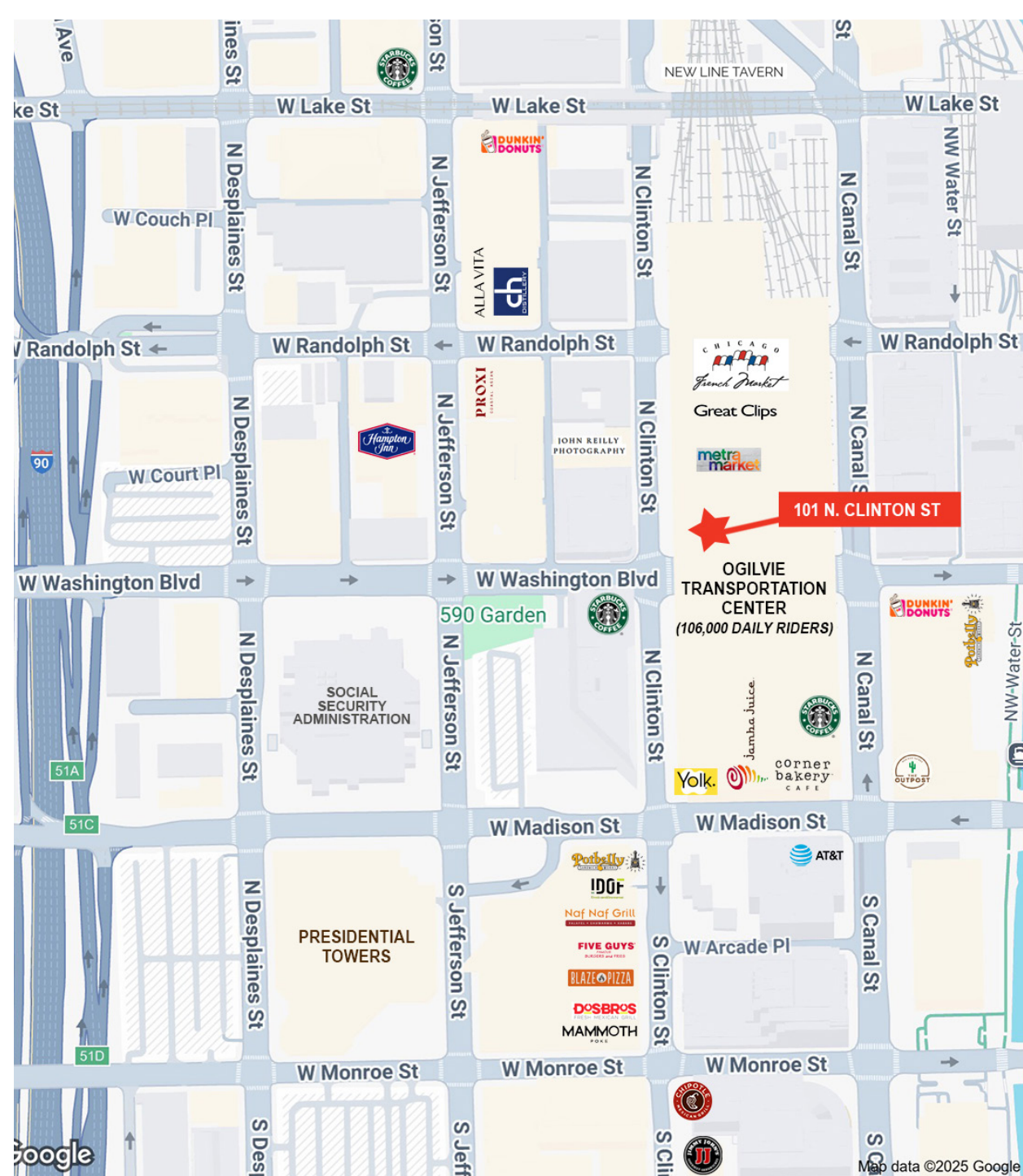
Rider's Paradise

World-class public transportation.

Bike Score
84

Very Bikeable

Biking is convenient for most trips.



DEMOGRAPHICS

	.5 MILE	1 MILE	1.5 MILE
POPULATION	24,446	93,304	203,605
AVG HH INCOME	\$209,939	\$216,090	\$204,620
DAYTIME POPULATION	211,627	487,587	615,908



CONTACT
INFORMATION

MATT SMETANA
630.572.5632
msmetana@edgemarkllc.com

MIKE WESLEY
630.572.5610
mwesley@edgemarkllc.com

The information contained herein has either been given to us by the owner of the property or obtained from sources that we deem reliable. We have no reason to doubt its accuracy but we do not guarantee it.