



OFFICE SPACE FOR LEASE

1334 ASHTON RD

HANOVER, MD 21076



1334 ASHTON RD

PROPERTY SUMMARY



VIDEO

PROPERTY HIGHLIGHTS

- Office space available in corporate center
- Ample parking for tenants and visitors; 3.25 / 1,000 SF
- Flexible floor plan to accommodate various needs
- 16' Clear Heights
- Column Spacing: 25'w X 25'd
- Zoning: W1
- Immediate Access to I-95, Route 100, Route 97, and Baltimore-Washington Parkway; less than 5 miles from the BWI airport

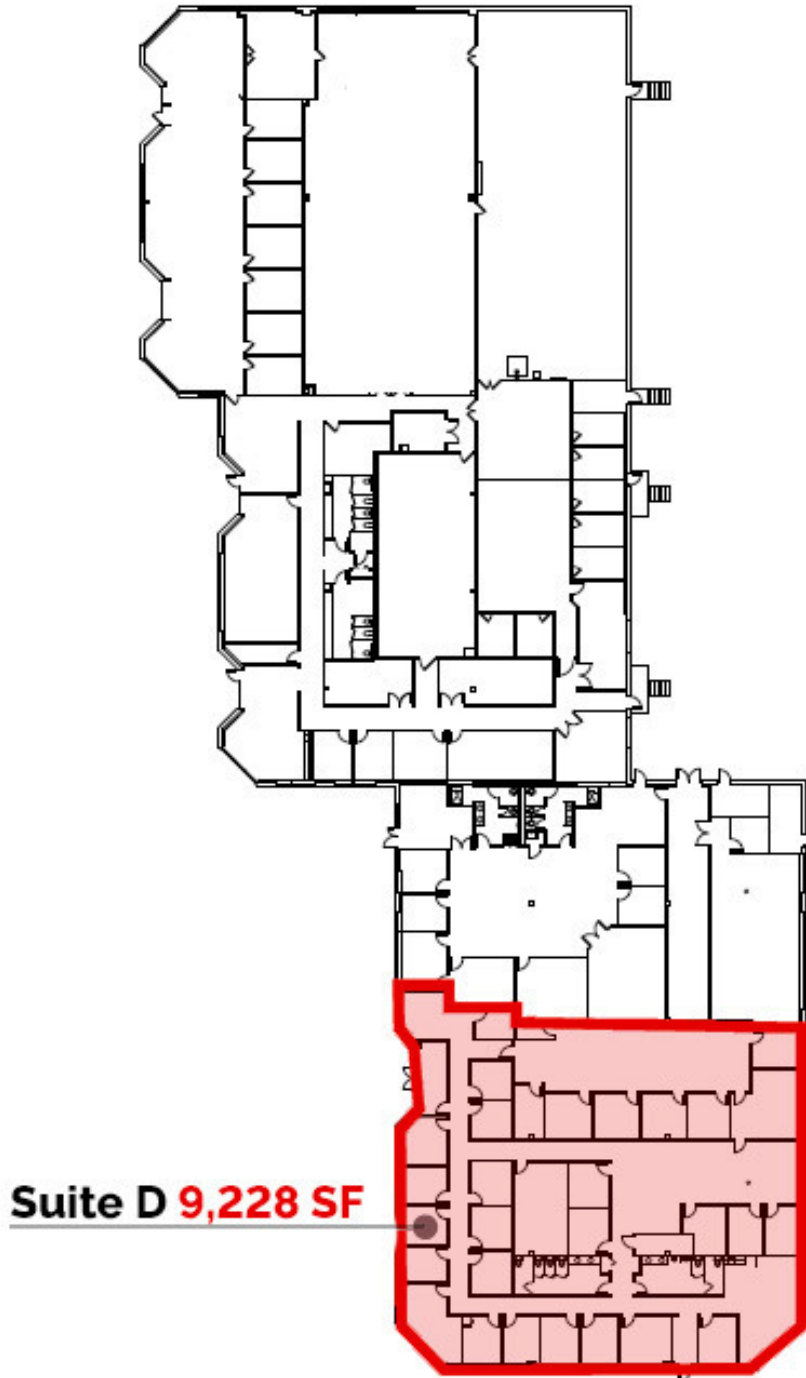
OFFERING SUMMARY

Lease Rate:	Negotiable
Number of Units:	1
Available SF:	9,228 SF
Lot Size:	168,144 SF
Building Size:	37,309 SF

DEMOGRAPHICS	1 MILE	3 MILES	5 MILES
Total Households	1,542	18,598	66,055
Total Population	4,051	50,351	185,295
Average HH Income	\$139,433	\$157,265	\$139,782

1334 ASHTON RD

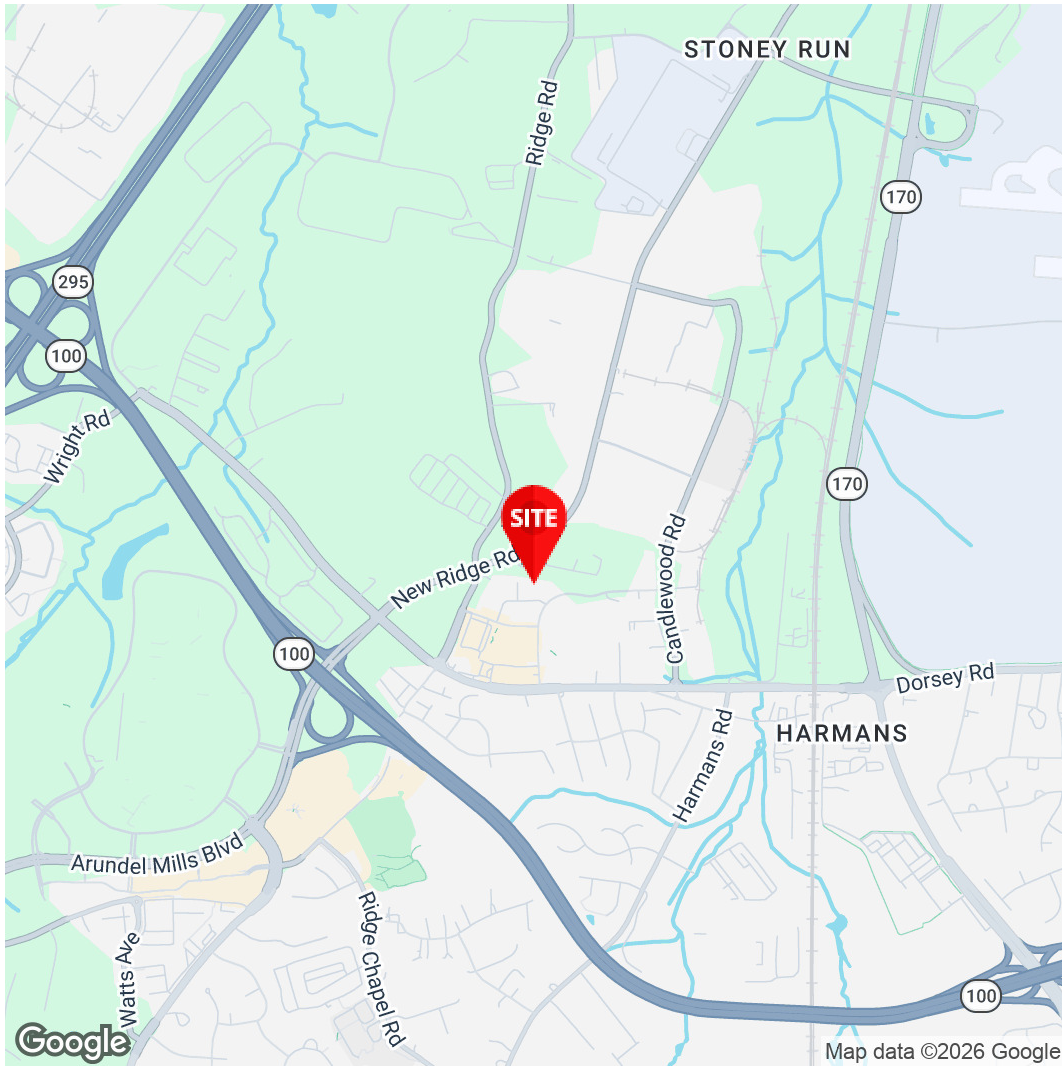
FLOOR PLAN



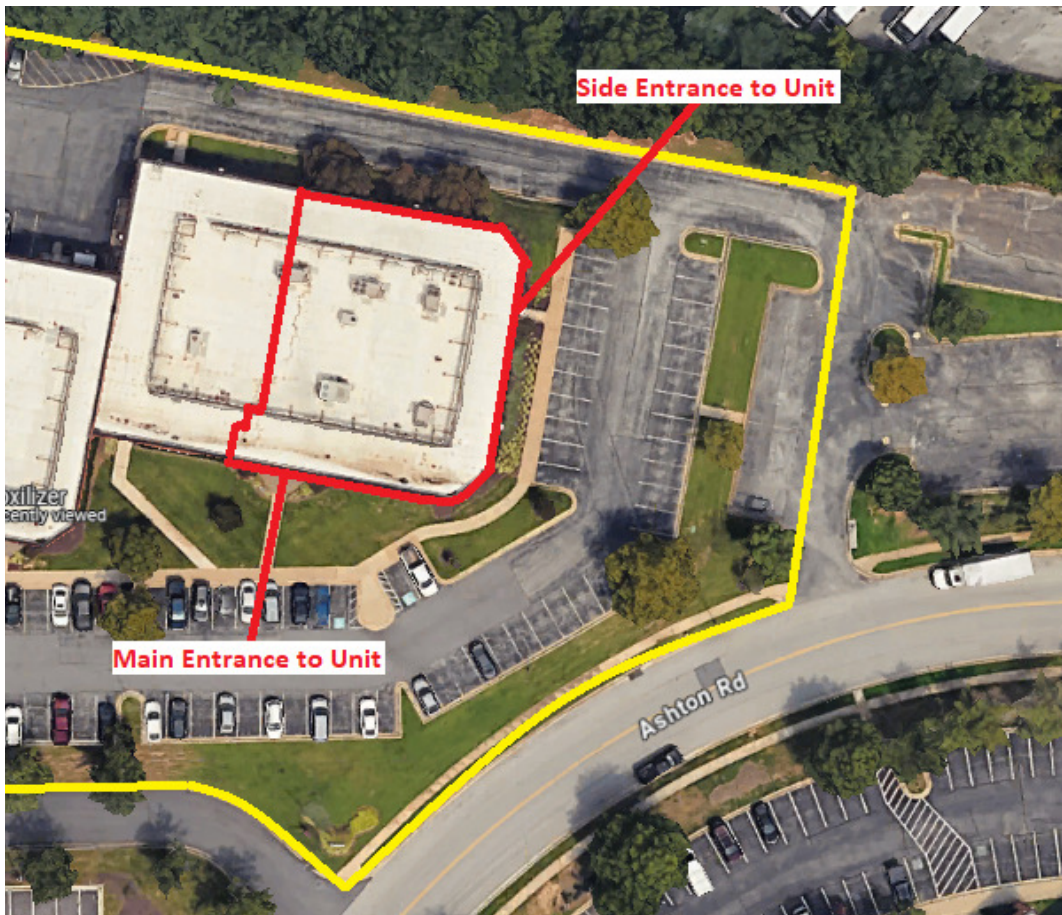
1334 ASHTON RD

RETAILER MAP





Amit Grover
Assistant Vice President
571.620.5143
agrover@divaris.com



The information contained herein should be considered confidential and remains the sole property of Divaris Real Estate, Inc. at all times. Although every effort has been made to ensure accuracy, no liability will be accepted for any errors or omissions. Disclosure of any information contained herein is prohibited except with the express written permission of Divaris Real Estate, Inc.