

C. P. HIGGINS' ADDITION

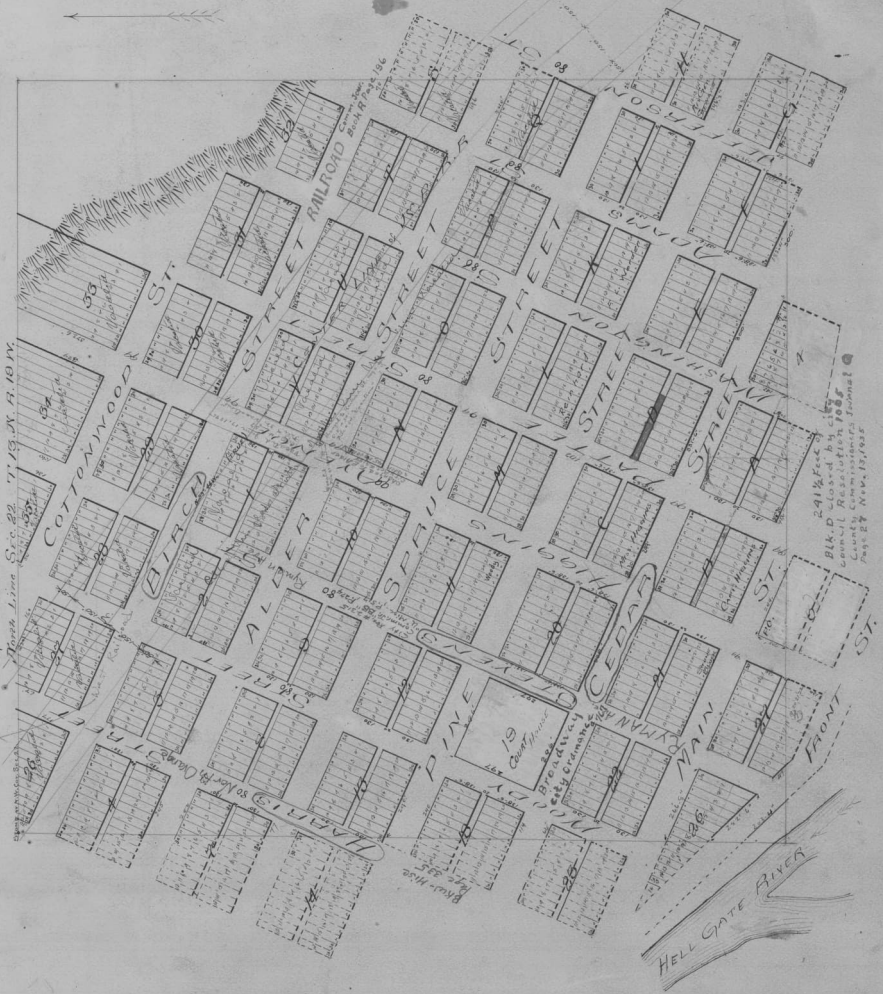
TO MISSOULA
SANT 2002'

Scale
1" = 200'

Public Share used on Original Plat

County of Blaine
State of Montana
I, C. P. Higgins, Surveyor, do hereby certify that the above is a true and correct copy of the original plat of the C. P. Higgins' Addition to Missoula, Montana, as shown to me by the County Clerk of Blaine County, Montana, on the 15th day of September, 1904.

STATE OF MONTANA
COUNTY OF BLAINE
C. P. Higgins
Surveyor
Attest: J. H. ...
County Clerk



Block 19
Cottonwood St
Alder St
Spruce St
Pine St
Birch St
Elm St
Main St
Front St

Block 20
Cottonwood St
Alder St
Spruce St
Pine St
Birch St
Elm St
Main St
Front St

C. P. HIGGINS' ADDITION
TO
MISSOULA
SCALE 3000' 1"

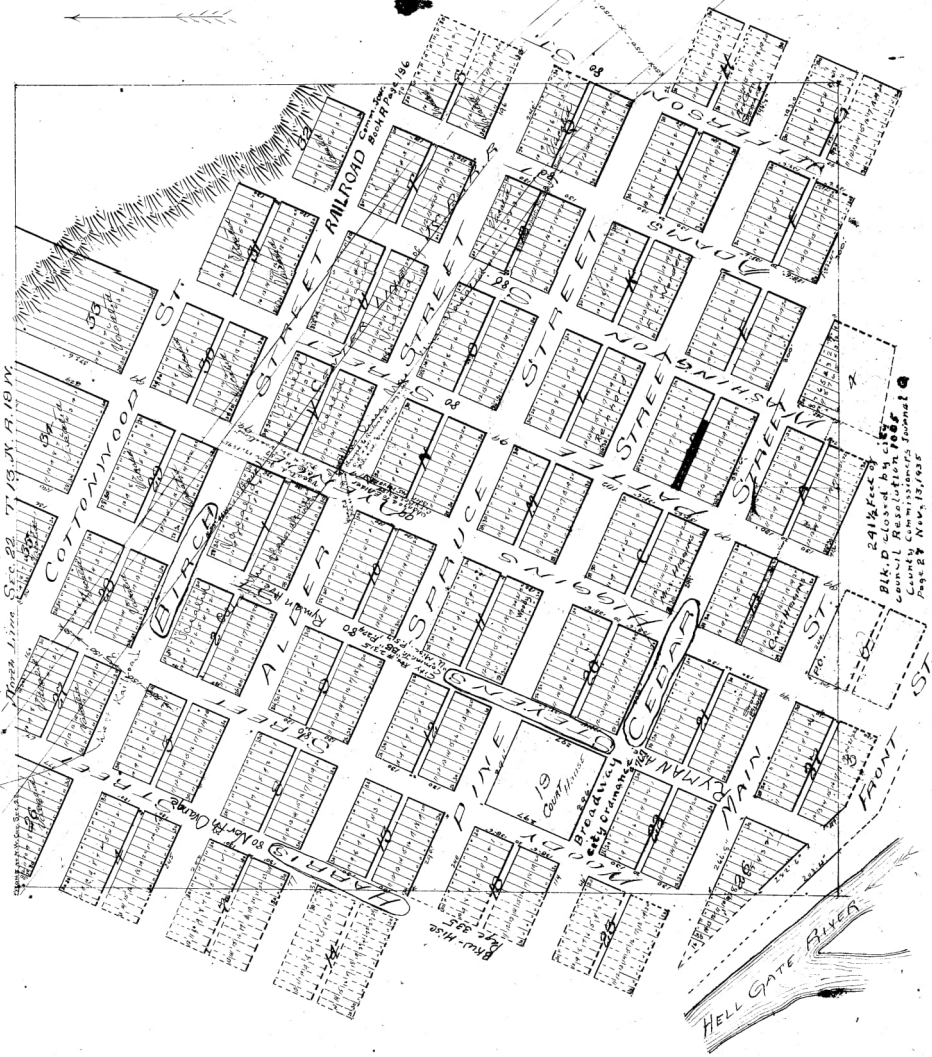
100' 200' 300' 400' 500'

Note: Scale used on Original Plat.
This plat is a copy of the original plat
and is not a true copy of the original
plat. It is a copy of the original
plat as it appears on the original
plat. It is a copy of the original
plat as it appears on the original
plat.

County of Missoula }
State of Montana }
I, J. B. Bergant, County Clerk of the
County of Missoula, do hereby certify that the above is a true and correct copy
of the original plat of C. P. Higgins' Addition to Missoula,
which was filed for record in my office on the 15th day of
April, 1888, and that the same is a true and correct copy
of the original plat as it appears on the original
plat.

J. B. Bergant
County Clerk

STATE OF MONTANA
COUNTY CLERK'S CERTIFICATE
County of Missoula
I, J. B. Bergant, County Clerk of the
County of Missoula, do hereby certify that the above is a true and correct copy
of the original plat of C. P. Higgins' Addition to Missoula,
which was filed for record in my office on the 15th day of
April, 1888, and that the same is a true and correct copy
of the original plat as it appears on the original
plat.



North Line, S. 22, 7, 13, N. 7, 19 W.
1/4 Sec. 10, T. 13 N., R. 19 W.
3rd Meridian

241/2 Feet
B.L. D. Ross
County Commissioners Journal
Page 24 Nov. 13, 1888

State of Montana
Dept. of Health
A. B. ...
Substitution Fee
\$100.00
\$100.00