

826 Shannon Dr, Fayetteville

SUBMITTED BY
David Hayter
davidhayterjr@yahoo.com

CREATED ON
2022-01-03

Total area 20715.19 sq ft	Floors 2	Rooms 28	Conf. room 1
-------------------------------------	--------------------	--------------------	------------------------

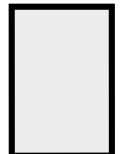
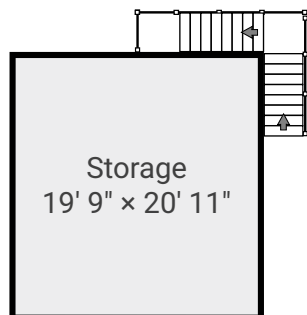
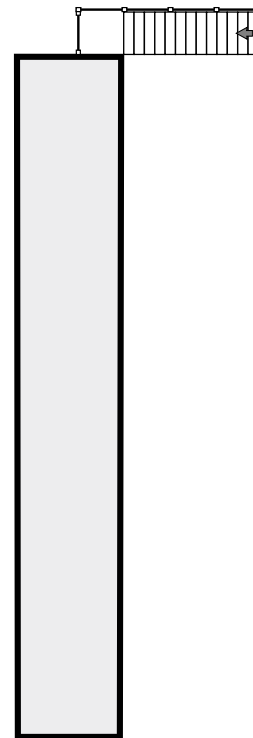
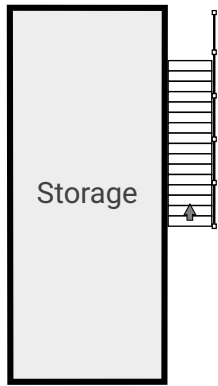
▼ Ground Floor

TOTAL AREA: 19249.18 sq ft • LIVING AREA: 19249.18 sq ft • ROOMS: 24



▼ 2nd Floor

TOTAL AREA: 1466.01 sq ft • LIVING AREA: 1466.01 sq ft • ROOMS: 4



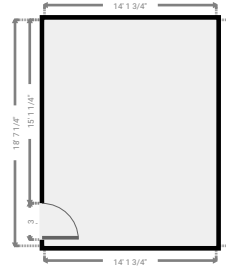
826 Shannon Dr, Fayetteville

TOTAL AREA: 20715.19 sq ft • LIVING AREA: 20715.19 sq ft • FLOORS: 2 • ROOMS: 28



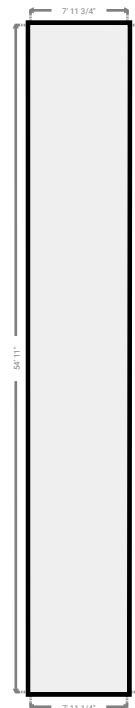
▼ Private Office Ground Floor

WIDTH: 14' 1 3/4" • LENGTH: 18' 7 1/4"
AREA: 263.13 sq ft • PERIMETER: 65' 6"



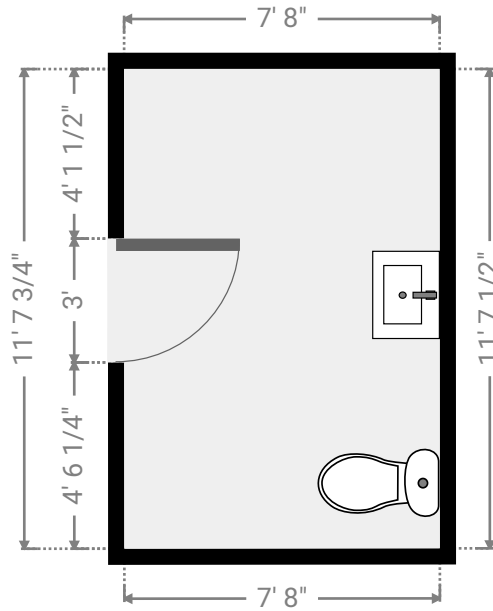
▼ Storage Ground Floor

WIDTH: 7' 11 3/4" • LENGTH: 54' 11"
AREA: 437.32 sq ft • PERIMETER: 125' 9 1/4"



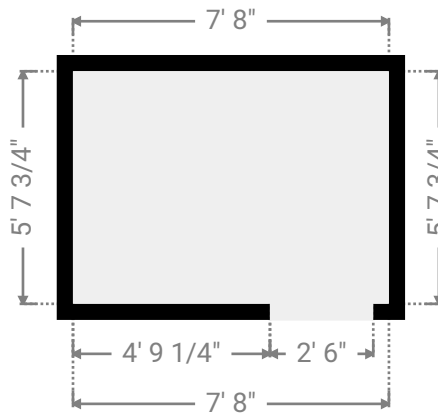
▼ Restrooms
Ground Floor

WIDTH: 7' 8" • LENGTH: 11' 7 3/4"
AREA: 89.12 sq ft • PERIMETER: 38' 7"



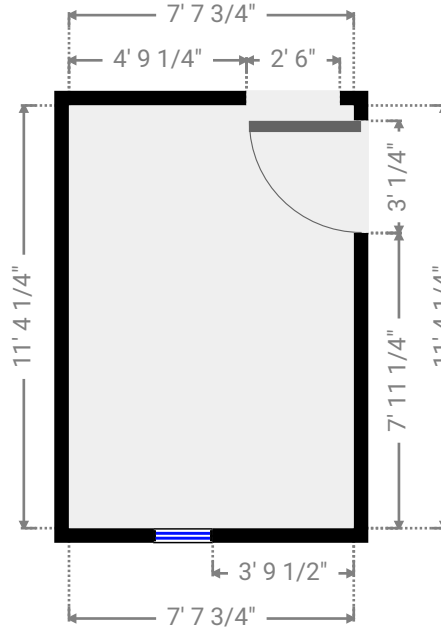
▼ Closet
Ground Floor

WIDTH: 7' 8" • LENGTH: 5' 7 3/4"
AREA: 43.29 sq ft • PERIMETER: 26' 7 1/2"



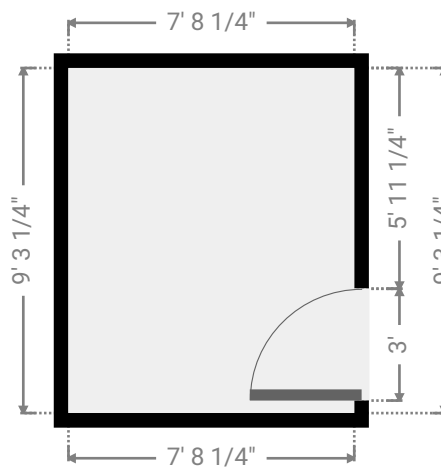
▼ **Private Office**
Ground Floor

WIDTH: 7' 7 3/4" • LENGTH: 11' 4 1/4"
AREA: 86.91 sq ft • PERIMETER: 38' 1/4"



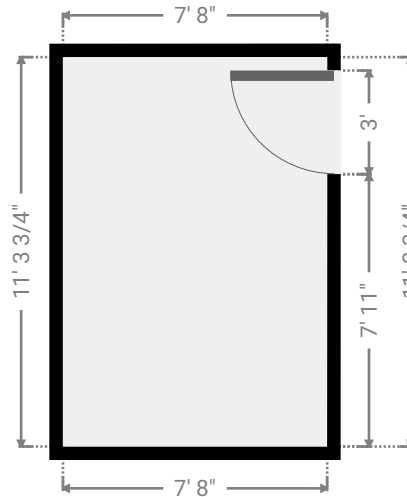
▼ **Private Office**
Ground Floor

WIDTH: 7' 8 1/4" • LENGTH: 9' 3 1/4"
AREA: 71.21 sq ft • PERIMETER: 33' 10 3/4"



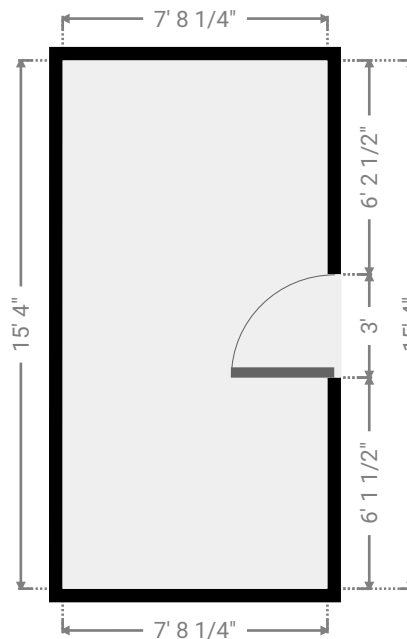
▼ Private Office
Ground Floor

WIDTH: 7' 8" • LENGTH: 11' 3 3/4"
AREA: 86.76 sq ft • PERIMETER: 37' 11 1/2"



▼ Private Office
Ground Floor

WIDTH: 7' 8 1/4" • LENGTH: 15' 4"
AREA: 117.95 sq ft • PERIMETER: 46' 3/4"



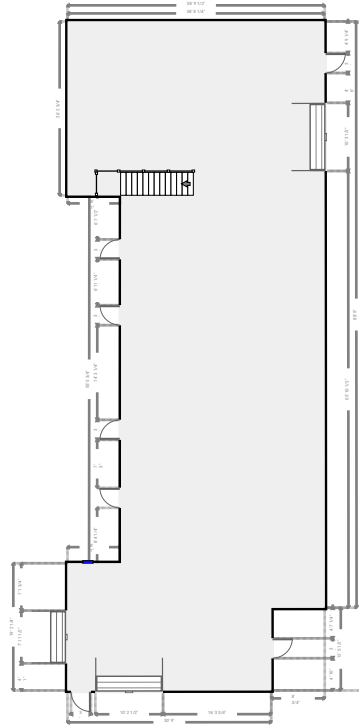
826 Shannon Dr, Fayetteville

TOTAL AREA: 20715.19 sq ft • LIVING AREA: 20715.19 sq ft • FLOORS: 2 • ROOMS: 28



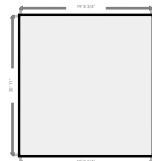
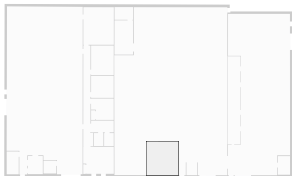
▼ Open Space Ground Floor

WIDTH: 38' 9 1/2" • LENGTH: 100' 11"
AREA: 3360.35 sq ft • PERIMETER: 295' 5 1/4"



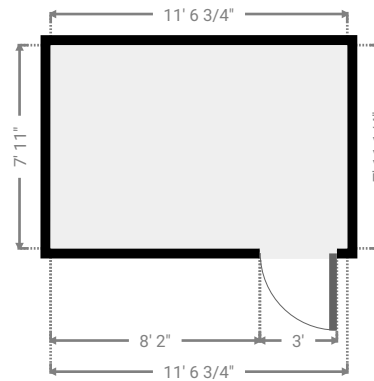
▼ Storage Ground Floor

WIDTH: 19' 8 3/4" • LENGTH: 20' 11"
AREA: 412.57 sq ft • PERIMETER: 81' 3 1/2"



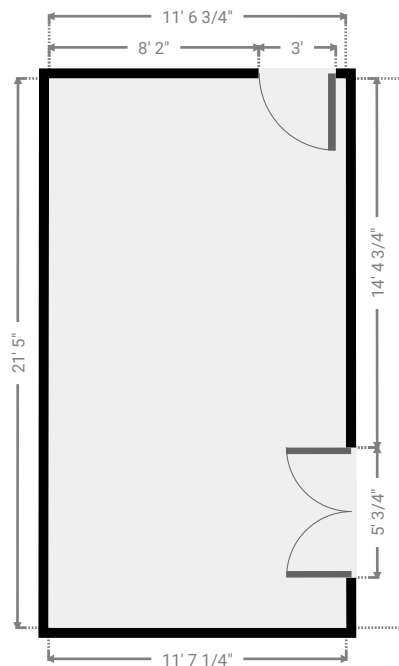
▼ **Private Office**
Ground Floor

WIDTH: 11' 6 3/4" • LENGTH: 7' 11 1/4"
AREA: 91.72 sq ft • PERIMETER: 39'



▼ **Private Office**
Ground Floor

WIDTH: 11' 7 1/4" • LENGTH: 21' 5"
AREA: 248.29 sq ft • PERIMETER: 66' 1/4"



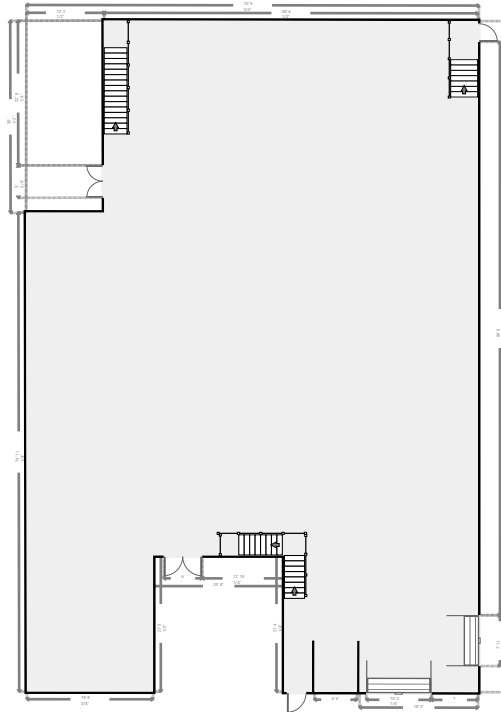
826 Shannon Dr, Fayetteville



TOTAL AREA: 20715.19 sq ft • LIVING AREA: 20715.19 sq ft • FLOORS: 2 • ROOMS: 28

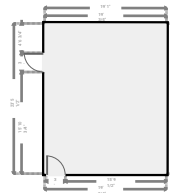
▼ Open Space Ground Floor

WIDTH: 70' 9 3/4" • LENGTH: 105'
AREA: 6607.00 sq ft • PERIMETER: 426' 1 1/4"



▼ Conference Room Ground Floor

WIDTH: 19' 1" • LENGTH: 23' 6"
AREA: 447.54 sq ft • PERIMETER: 85' 1"



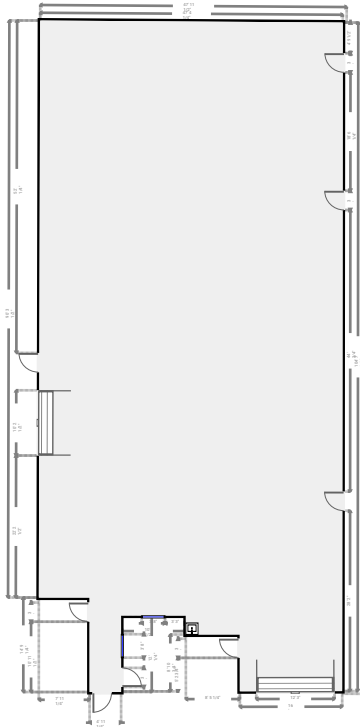
826 Shannon Dr, Fayetteville

TOTAL AREA: 20715.19 sq ft • LIVING AREA: 20715.19 sq ft • FLOORS: 2 • ROOMS: 28



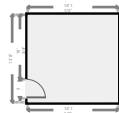
▼ Open Space Ground Floor

WIDTH: 47' 11 1/2" • LENGTH: 105'
AREA: 4657.83 sq ft • PERIMETER: 328' 3 1/2"



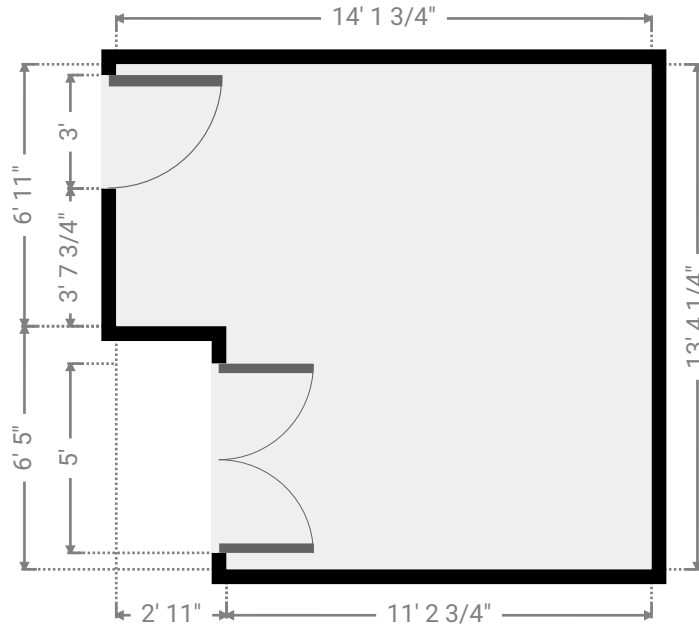
▼ Private Office Ground Floor

WIDTH: 14' 1 1/2" • LENGTH: 13' 8"
AREA: 193.22 sq ft • PERIMETER: 55' 7 1/4"



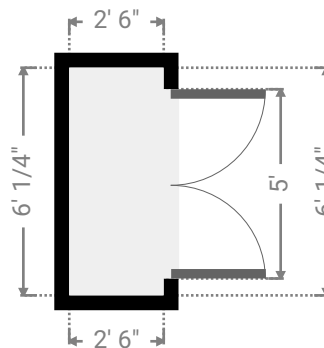
▼ **Private Office**
Ground Floor

WIDTH: 14' 1 3/4" • LENGTH: 13' 4 1/4"
AREA: 170.18 sq ft • PERIMETER: 55'



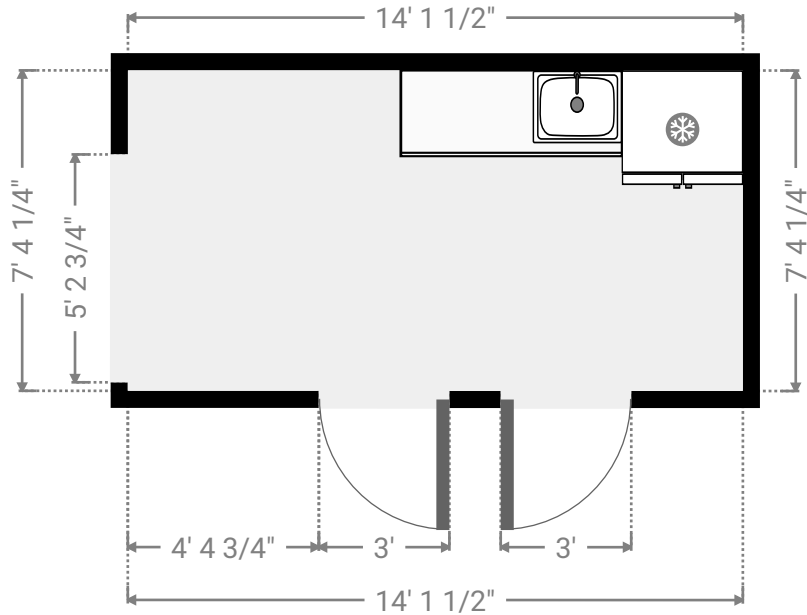
▼ **Closet**
Ground Floor

WIDTH: 2' 6" • LENGTH: 6' 1/4"
AREA: 15.03 sq ft • PERIMETER: 17' 1/4"



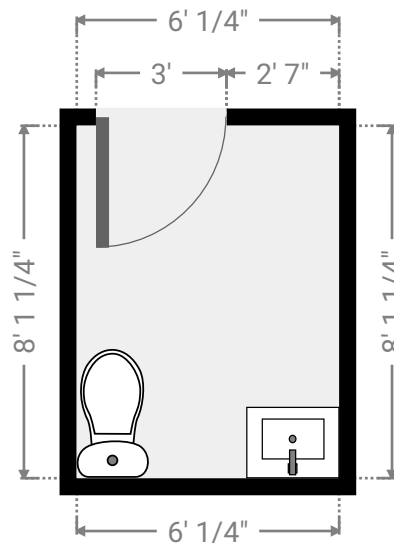
▼ **Kitchenette**
Ground Floor

WIDTH: 14' 1 1/2" • LENGTH: 7' 4 1/4"
AREA: 103.99 sq ft • PERIMETER: 42' 11 3/4"



▼ **Restrooms**
Ground Floor

WIDTH: 6' 1/4" • LENGTH: 8' 1 1/4"
AREA: 48.80 sq ft • PERIMETER: 28' 3"



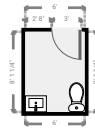
826 Shannon Dr, Fayetteville

TOTAL AREA: 20715.19 sq ft • LIVING AREA: 20715.19 sq ft • FLOORS: 2 • ROOMS: 28



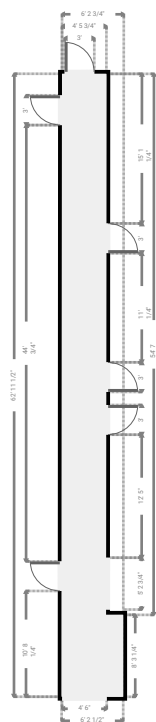
▼ Restrooms Ground Floor

WIDTH: 6' • LENGTH: 8' 1 1/4"
AREA: 48.51 sq ft • PERIMETER: 28' 2"



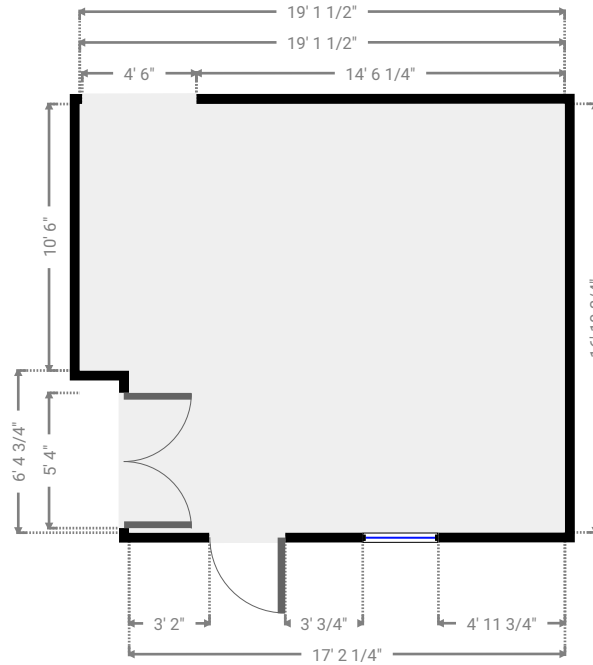
▼ Hall Ground Floor

WIDTH: 6' 2 3/4" • LENGTH: 62' 11"
AREA: 296.19 sq ft • PERIMETER: 138' 3"



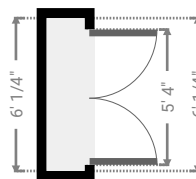
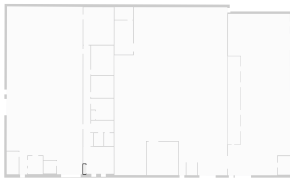
▼ **Reception**
Ground Floor

WIDTH: 19' 1 1/2" • LENGTH: 16' 11"
AREA: 310.93 sq ft • PERIMETER: 72' 3/4"



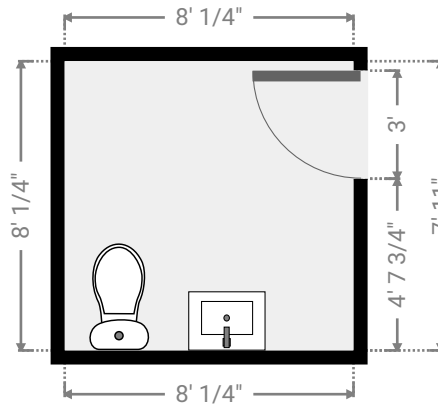
▼ **Server Room**
Ground Floor

WIDTH: 1' 6" • LENGTH: 6' 1/4"
AREA: 9.01 sq ft • PERIMETER: 15' 1/2"



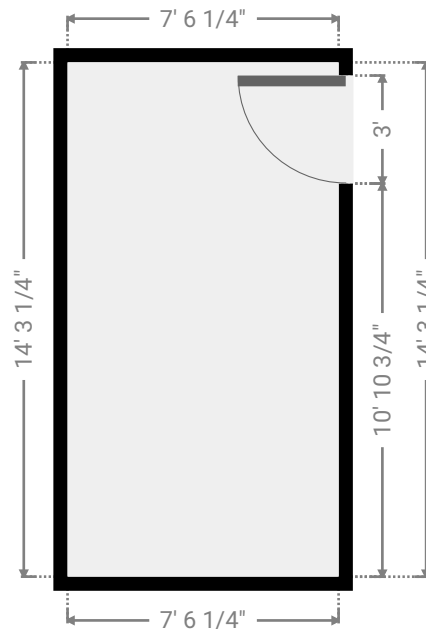
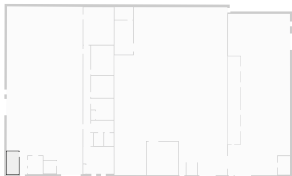
▼ Restrooms
Ground Floor

WIDTH: 8' 1/4" • LENGTH: 8' 1/4"
AREA: 64.27 sq ft • PERIMETER: 32' 3/4"



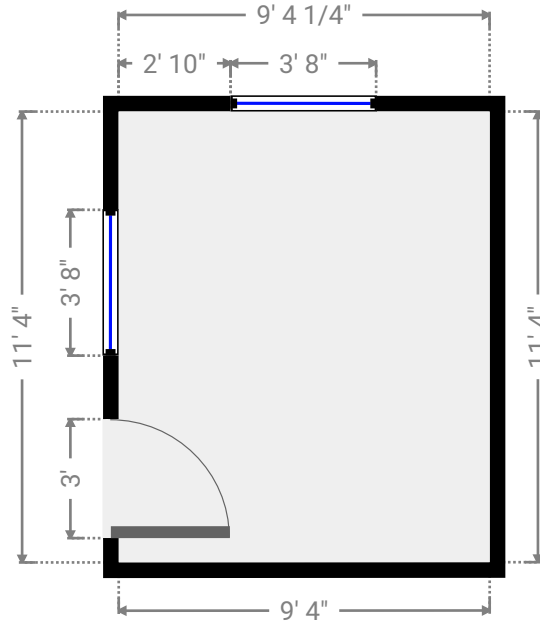
▼ Storage
Ground Floor

WIDTH: 7' 6 1/4" • LENGTH: 14' 3 1/4"
AREA: 107.26 sq ft • PERIMETER: 43' 6 3/4"



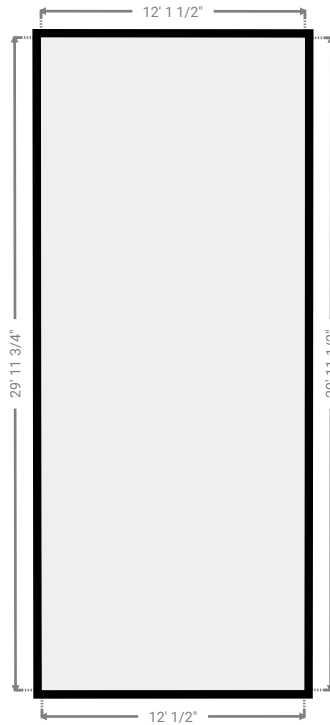
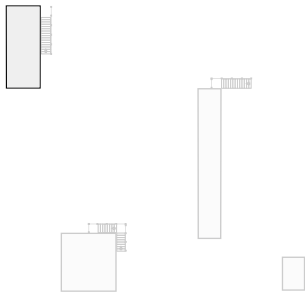
▼ **Private Office**
Ground Floor

WIDTH: 9' 4" • LENGTH: 11' 4"
AREA: 105.67 sq ft • PERIMETER: 41' 3 3/4"



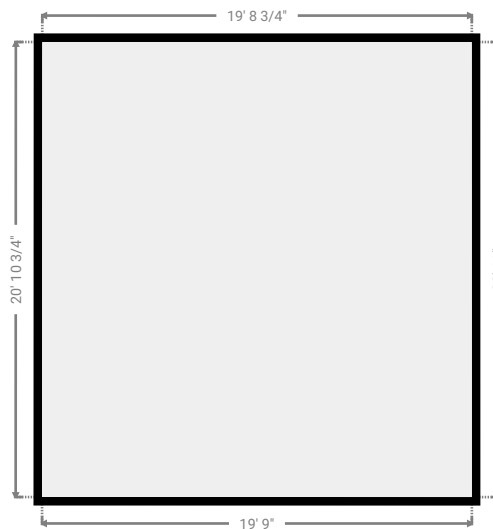
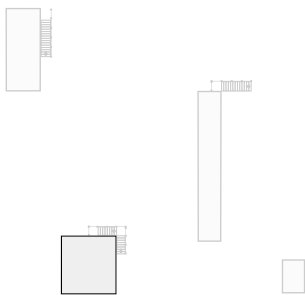
▼ Storage
2nd Floor

WIDTH: 12' 1 1/2" • LENGTH: 29' 11 3/4"
AREA: 362.22 sq ft • PERIMETER: 84' 1 1/4"



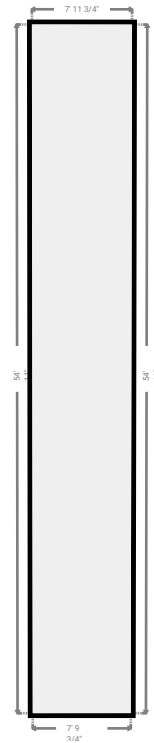
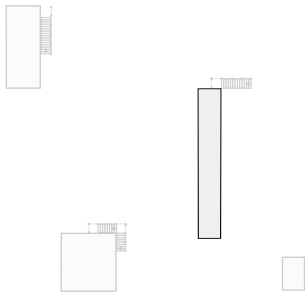
▼ Storage
2nd Floor

WIDTH: 19' 8 3/4" • LENGTH: 20' 11"
AREA: 412.65 sq ft • PERIMETER: 81' 3 1/2"



▼ Storage
2nd Floor

WIDTH: 7' 11 3/4" • LENGTH: 54' 11"
AREA: 433.77 sq ft • PERIMETER: 125' 7 1/2"



▼ Storage
2nd Floor

WIDTH: 7' 8" • LENGTH: 11' 7 3/4"
AREA: 89.14 sq ft • PERIMETER: 38' 7 1/4"

