

FOR LEASE



**SPRINGFIELD PLACE**  
700 Spring Forest Road | Raleigh, NC 27615



**CAPITAL  
ASSOCIATES®**

# SPRINGFIELD PLACE

700 Spring Forest Road | Raleigh, NC 27615

<b>PROPERTY TYPE</b>	Office
<b>BUILDING SIZE</b>	77,000 SF
<b>YEAR BUILT</b>	1998
<b>COUNTY</b>	Wake
<b>LOCATION</b>	Raleigh, NC
<b>FLOORS</b>	4



**TRIPP BRADSHAW**

919.749.0004 (c)

919.233.9901 (o)

tbradshaw@capitalassociates.com

capitalassociates.com

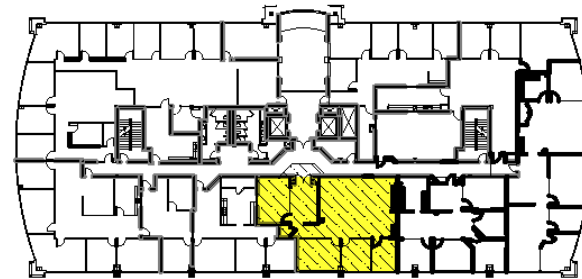
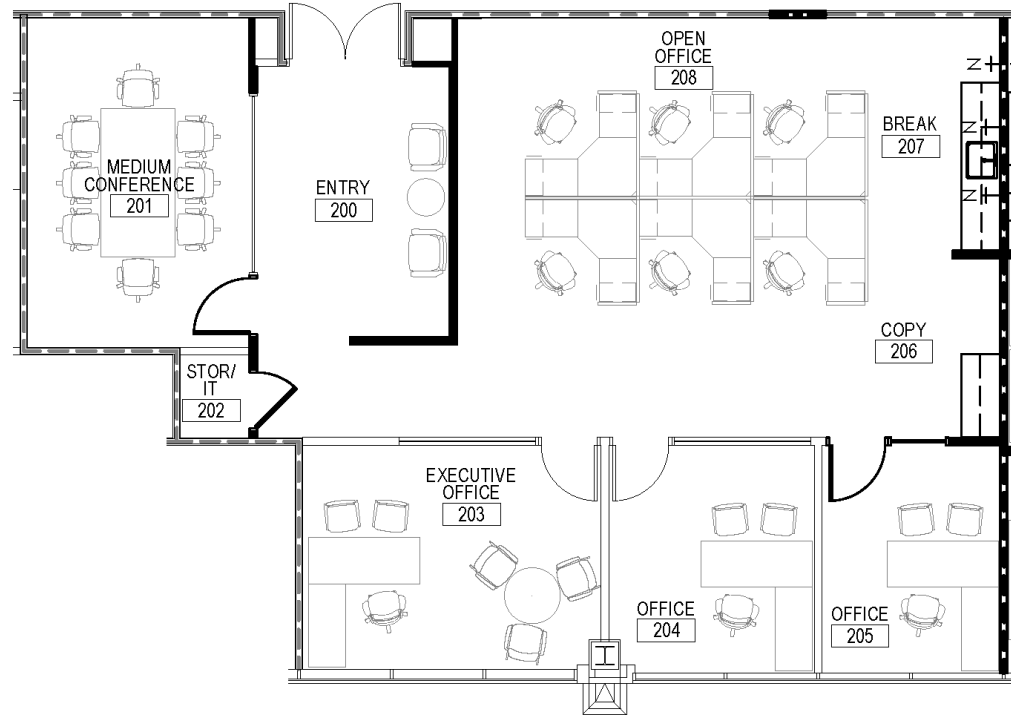
# SPRINGFIELD PLACE

700 Spring Forest Road | Raleigh, NC 27615

**AVAILABLE**

Second Floor  
Suite 200

1,994 SF



**TRIPP BRADSHAW**

919.749.0004 (c)

919.233.9901 (o)

tbradshaw@capitalassociates.com

capitalassociates.com

# ABOUT

Springfield Place is a 77,000 SF four-story, Class A brick and glass office building featuring a dramatic two-story lobby with mahogany mill work throughout. Strategically located in an outstanding corporate environment in the heart of North Raleigh southwest of the Falls of Neuse and Spring Forest Road intersection, numerous retail amenities abound with convenient access to North Ridge Country Club, North Hills and Interstates 440 and 540.



**TRIPP BRADSHAW**

919.749.0004 (c)

919.233.9901 (o)

tbradshaw@capitalassociates.com

capitalassociates.com

# SPRINGFIELD PLACE

700 Spring Forest Road | Raleigh, NC 27615

## LOCATION

Strategically located at Falls of Neuse and Spring Forest Road. Convenient access to North Ridge Country Club, North Hills, I-440, I-540 and numerous retail amenities.

## BUILDING DETAILS

- Easy access to main lobby
- After-hours proximity card access system
- On-site property management by Capital Associates

## Walk Score®



**72**

### VERY WALKABLE

Most errands can be accomplished on foot.



**37**

### SOME TRANSIT

A few nearby public transportation options.



**71**

### VERY BIKEABLE

Biking is convenient for most trips.



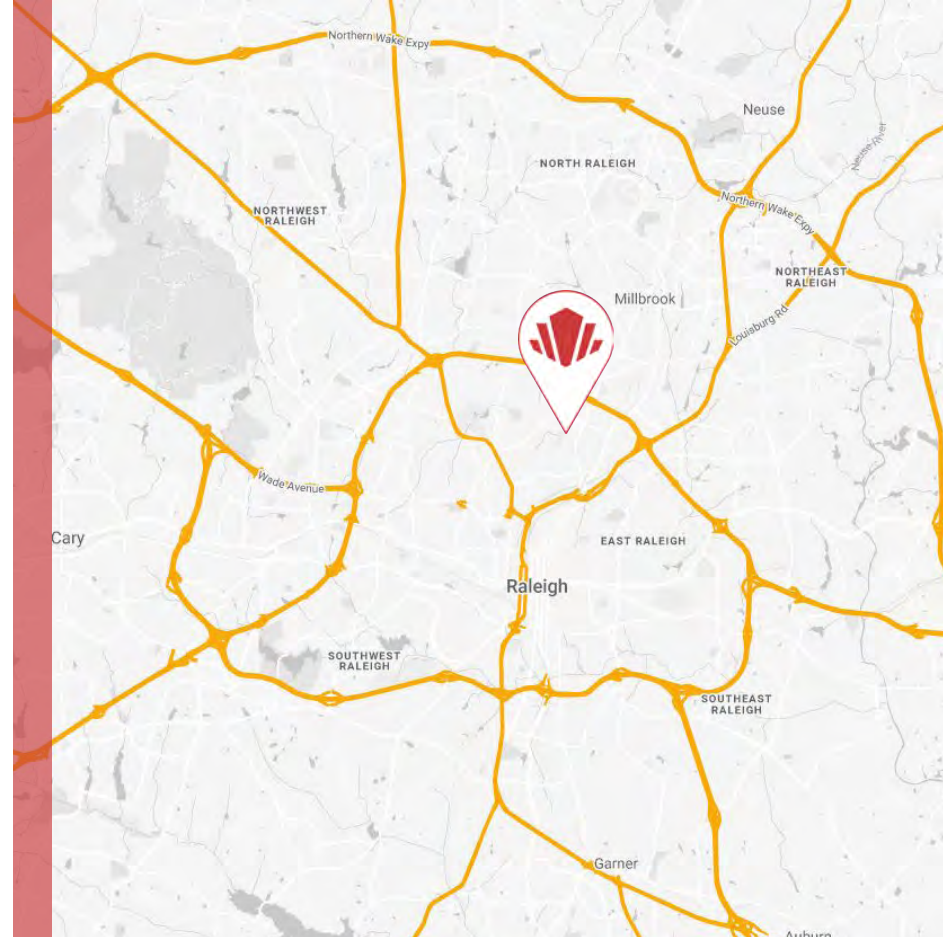
### TRIPP BRADSHAW

919.749.0004 (c)

919.233.9901 (o)

tbradshaw@capitalassociates.com

capitalassociates.com



# CENTRAL LOCATION



SPRINGFIELD PLACE

**POINTS OF INTEREST**

**DINING**

- Rise Biscuits and Donuts
- Subway
- PDQ Chicken
- Guasaca
- Taco Bell
- Jason's Deli
- Burger 21
- Starbucks
- Chipotle
- Chop't Creative Salad Bar

**CONVENIENCE**

- Wells Fargo
- Harris Teeter
- Walgreens
- UPS Store
- Pet Supermarket

**LEISURE**

- North Ridge Country Club



Reserved Parking Caution: Clearance 7-9" Towing Enforced

RESERVED  
PARKING  
TOW-AWAY  
ZONE

SKATEBOARDING  
LOITERING  
IS  
PROHIBITED

## PARKING

Ample parking available located underneath the building