

**FOR LEASE | 1,200 RENTABLE SQUARE FEET**  
**15301 W. 87TH STREET PARKWAY, LENEXA**

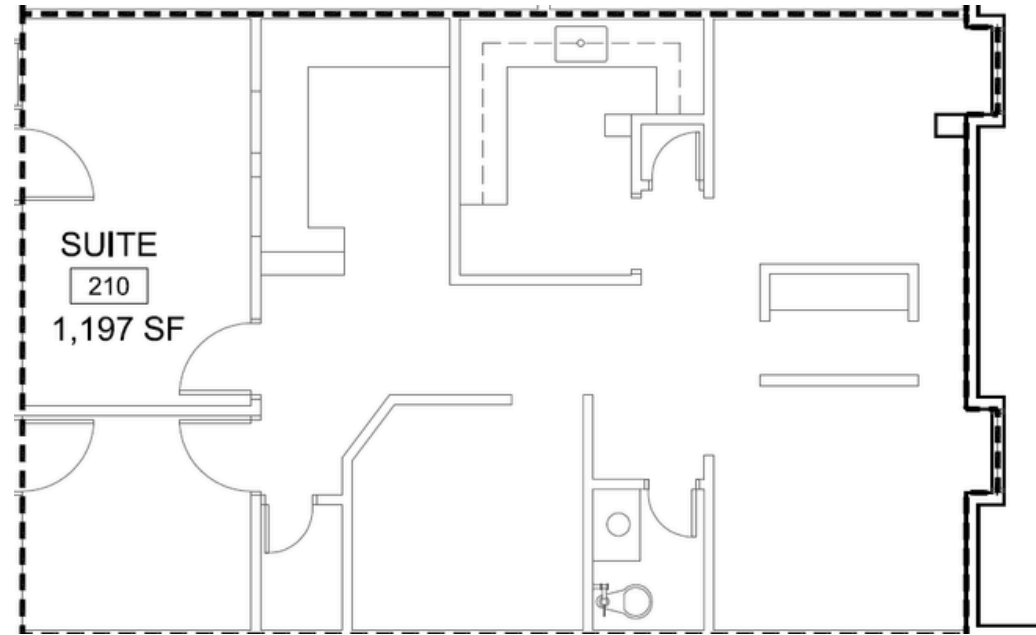


# FOR LEASE | 1,200 RENTABLE SQUARE FEET

15301 W. 87TH STREET PARKWAY, LENEXA, KS

## PROPERTY HIGHLIGHTS

- Prominent Office Bank Building
- Near Lenexa City Center
- Large Parking Lot
- 2nd floor offices with elevator
- Former dental office
- Private restroom and sinks in Suite
- 1,200 sq. ft. office
- Join other professional businesses
- Excellent for medical or aesthetics



**ANN JORDEN-SPENCER, CCIM**

CELL: 913.205.5909

OFFICE: 913.384.6666

ANN@JACKJORDENREALESTATE.COM

**Jack Jordan Real Estate, LLC**