

# ±7,451 SF

## 2nd Floor Office Space For Sublease



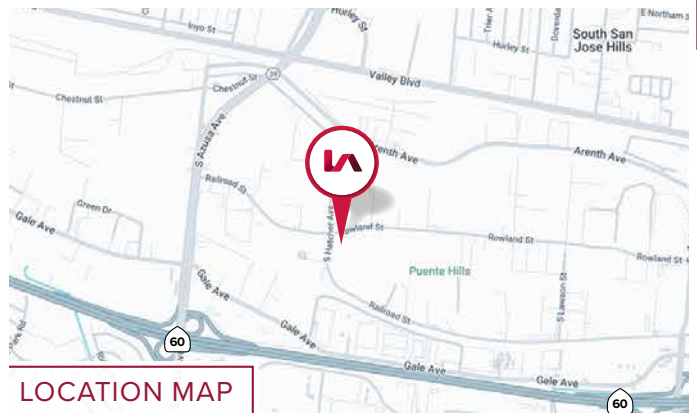
### 17501 E ROWLAND ST CITY OF INDUSTRY, CA 91748

#### PROPERTY HIGHLIGHTS

- ±7,451 SF of 2nd Floor Office Space Available For Sublease
- Flexible Short-Term Sublease Terms Available: 6 Months to 2 Years
- 21+ Parking Spaces Available
- Prime City of Industry Location
- Convenient Freeway Access: Fwy 60 via Azusa Avenue
- Multiple Private Offices Throughout
- Open Bullpen / Open Office Area
- 4 Restrooms, Including 2 Showers
- Two Staircase Access Points
- Hours of Operation:  
Monday–Friday, 9:00 AM–5:00 PM
- Immediate Occupancy Available



PROPERTY AERIAL



LOCATION MAP

**Tai Ngo, CCIM**  
Senior Vice President | Lic. ID #01779172  
(626) 622-9770 | [tngo@lee-associates.com](mailto:tngo@lee-associates.com)

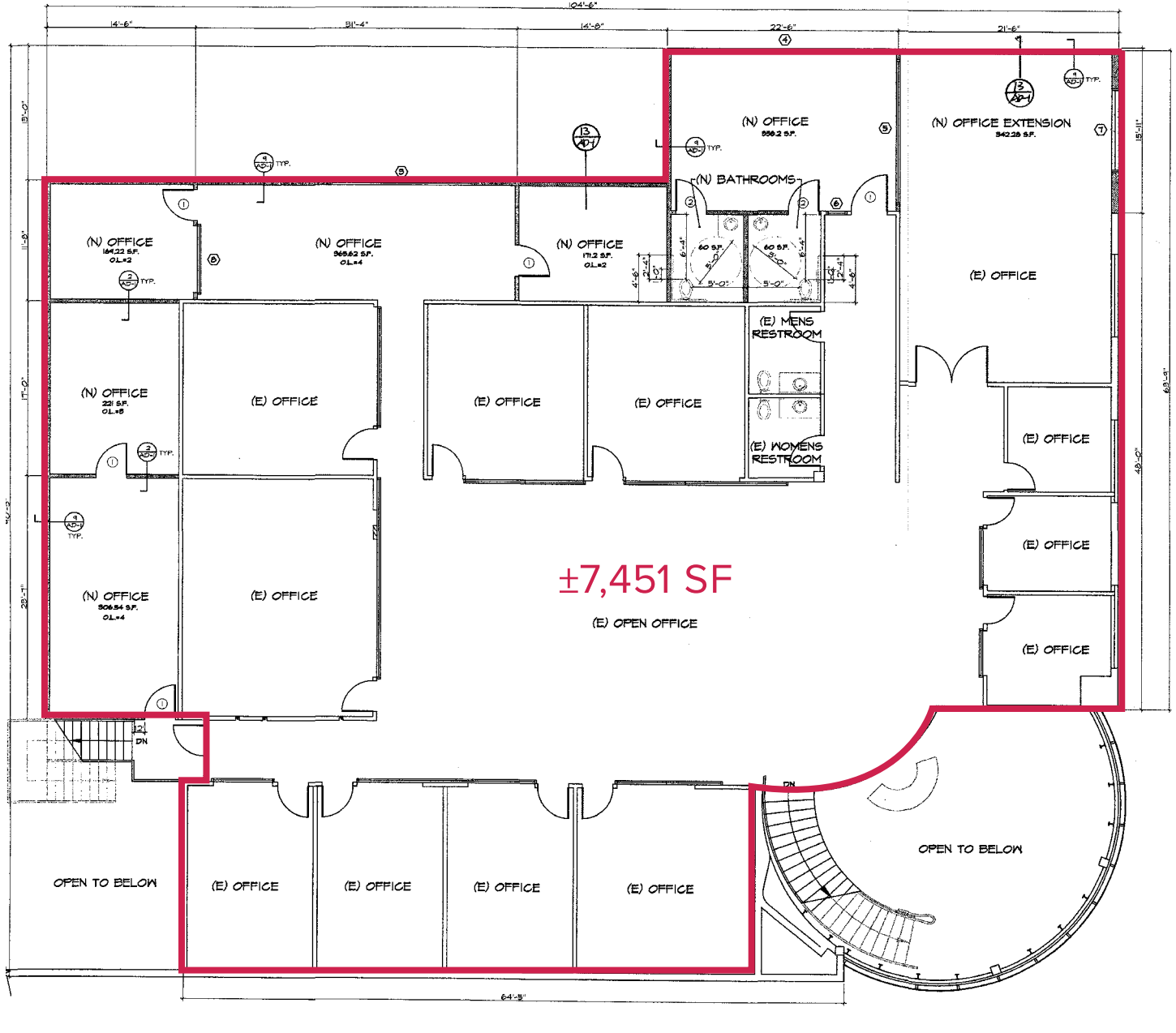
**Michelle Wu**  
DMAC Design + Build  
(626) 257-8827 | [mwu@dmacse.com](mailto:mwu@dmacse.com)

Lee & Associates - Industry Inc.  
13181 Crossroads Pkwy, N, Suite 300,  
City of Industry, CA 91746  
(562) 699-7500 | Corp. ID# 01125429

# ±7,451 SF

## 2nd Floor Office Space For Sublease

### SITE PLAN



Not To Scale/ Not Exact

**Tai Ngo, CCIM**  
Senior Vice President | Lic. ID #01779172  
(626) 622-9770 | tngo@lee-associates.com

**Michelle Wu**  
DMAC Design + Build  
(626) 257-8827 | mwu@dmacse.com

Lee & Associates - Industry Inc.  
13181 Crossroads Pkwy, N, Suite 300,  
City of Industry, CA 91746  
(562) 699-7500 | Corp. ID# 01125429