

**FOR SALE**

**analog**  
REAL ESTATE



**2909 E 1<sup>st</sup> Street**

**FOR SALE**

David Schneider 415-269-8739 CA DRE NO. 01981458

[schneider@analog-la.com](mailto:schneider@analog-la.com)

[www.analog-la.com](http://www.analog-la.com)

**FOR SALE**

**analog**  
REAL ESTATE



**2909 E 1<sup>st</sup> Street**

**FOR SALE**

**David Schneider 415-269-8739 CA DRE NO. 01981458**

**[schneider@analog-la.com](mailto:schneider@analog-la.com)**

**[www.analog-la.com](http://www.analog-la.com)**

**FOR SALE**

**2909 E 1<sup>st</sup> Street**

**DETAILS**

**ADDRESS**

2909 E 1<sup>st</sup> Street

**BLDG SF**

1,978

**LAND SF**

5,663

**SALE PRICE**

\$1,400,000



2909 E 1<sup>st</sup> Street is a boutique office building located in the Boyle Heights area of East Los Angeles.

#### FEATURES

The interior is built out as a post-production facility, equipped with a six seat theatre, multiple private offices, a conference room, kitchen, communal space, and secured equipment room.

The property includes a private parking lot, accessible through a parallel alley, which serves as the primary entrance.

**FOR SALE**

**2909 E 1<sup>st</sup> Street**

**THE NEIGHBORHOOD**

**THE NEIGHBORHOOD**

**Boyle Heights is a vibrant, historic neighborhood just east of downtown Los Angeles. With a legacy rooted in activism, art, entrepreneurship, and culture, it's an ideal location for any business seeking a diverse, authentic, and walkable area with a classic neighborhood feel.**



**FOR SALE**

**2909 E 1<sup>st</sup> Street**

**PHOTOS**



**FOR SALE**

**2909 E 1st Street**

**PHOTOS**

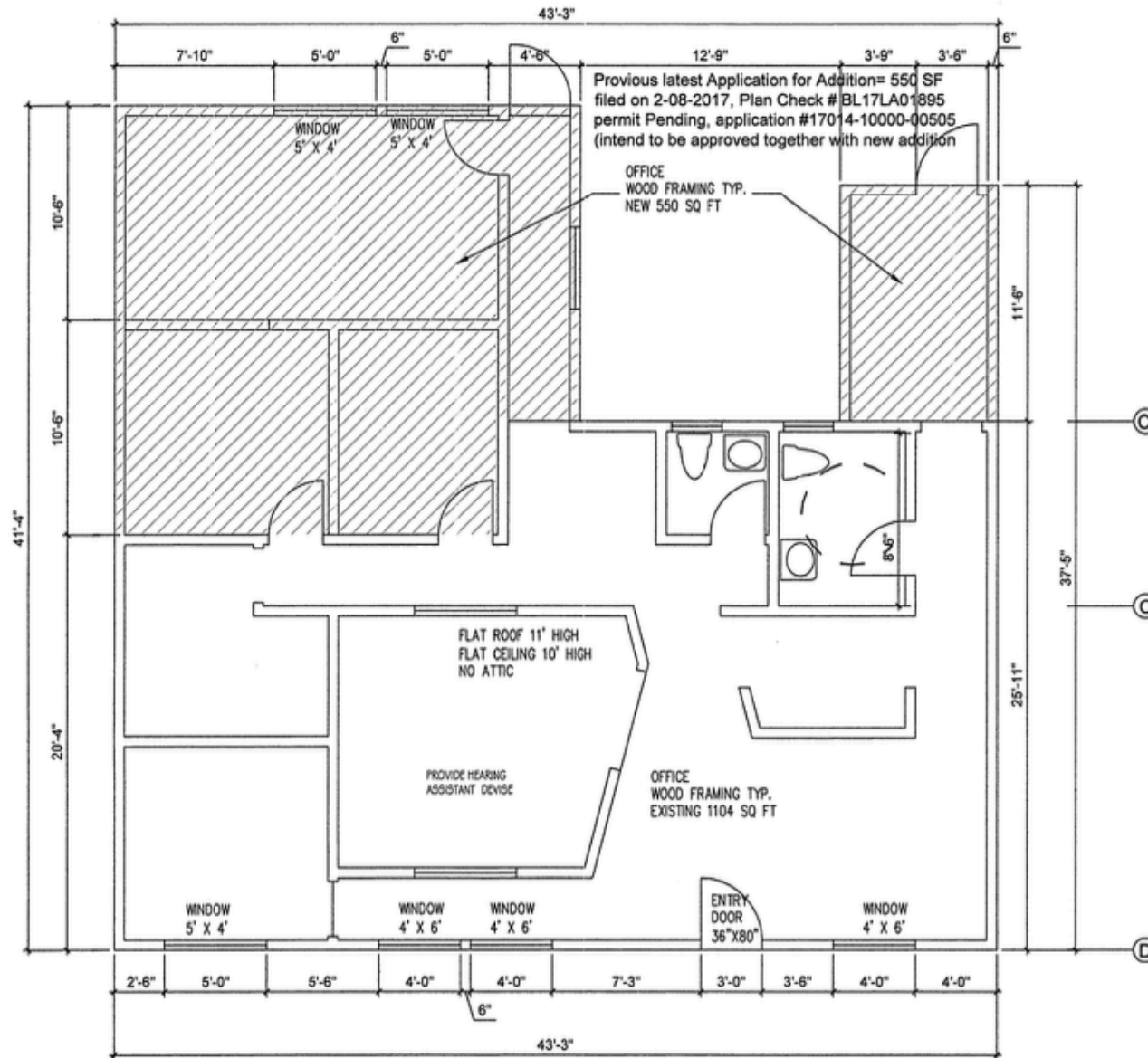


**FOR SALE**

**BUILDING INFORMATION**

**PHOTOS**





**FOR SALE**

### **About Analog Real Estate**

Analog Real Estate is a boutique brokerage and development company,  
with offices in Pasadena and Malibu.

**Analog Real Estate  
251 S Lake Ave #739  
Pasadena, CA 91103**