



Colliers



Office For Lease

Lease Rate:

**\$14.00 PSF**

**Contact:**

**Suzette Petersen**

Associate  
+1 801 885-9104  
suzette.petersen@colliers.com

**James Bullington**

Executive Vice President  
+1 801 836 2400  
james.bullington@colliers.com

---

**Colliers**

2100 Pleasant Grove Blvd., Suite 200  
Pleasant Grove, UT 84062  
Main: +1 801 947 8300  
colliers.com

845 S. 220 E. Lower Level  
Orem, Utah

## Turnberry Office Condo

### Building Amenities

- Lower level has an office, a large open office area, storage room, restroom, and kitchenette
- Separate lower level entrance
- Centrally located within walking distance from an abundance of food and shopping options

**Available: 960 SF**

**Lease Rate: \$14.00 PSF | Modified Gross**

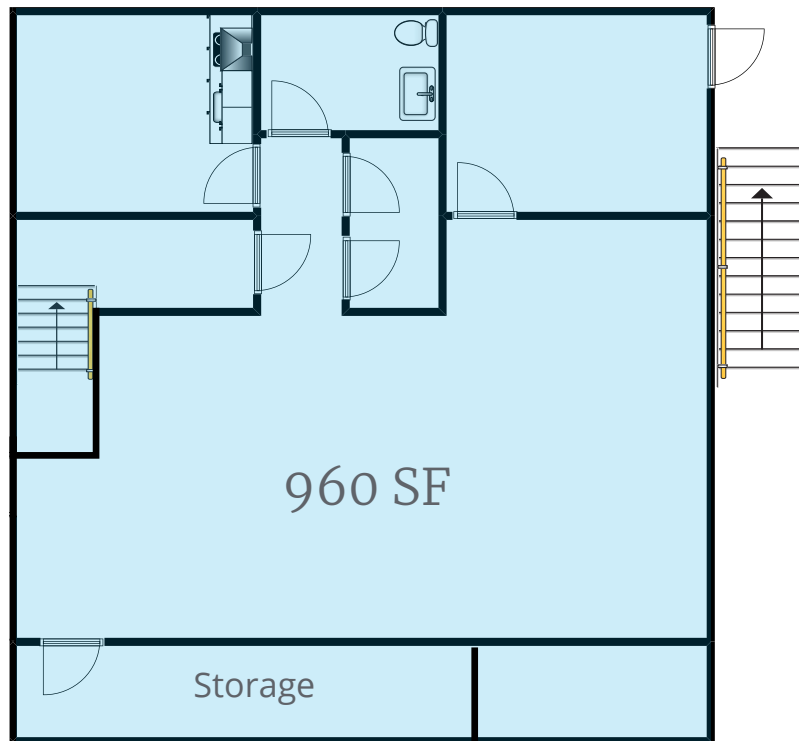
# Pictures



# Floor Plan



Lower Level -





**Colliers**  
 2100 Pleasant Grove Blvd., Suite 200  
 Pleasant Grove, UT 84062  
 Main: +1 801 947 8300  
 colliers.com

**James Bullington**  
 Executive Vice President  
 +1 801 836 2400  
 james.bullington@colliers.com

**Suzette Petersen**  
 Associate  
 +1 801 885-9104  
 suzette.petersen@colliers.com

This document has been prepared by Colliers International for advertising and general information only. Colliers International makes no guarantees, representations or warranties of any kind, expressed or implied, regarding the information including, but not limited to, warranties of content, accuracy and reliability. Any interested party should undertake their own inquiries as to the accuracy of the information. Colliers International excludes unequivocally all inferred or implied terms, conditions and warranties arising out of this document and excludes all liability for loss and damages arising there from. This publication is the copyrighted property of Colliers International and/or its licensor(s). ©2025. All rights reserved.