

SOUTHWEST MEDICAL PLAZA II

5801 Oakbend Trail
Fort Worth, TX 76132

Outpatient Medical For Lease



Medical Leasing:
214.461.2383

Douglas Maclay **Banks Newton** **Elizabeth Madden**
214.461.2371 214.461.2388 214.461.2366
dmaclay@lpc.com bnewton@lpc.com emadden@lpc.com

Lincoln

8140 Walnut Hill Lane
Suite 700
Dallas, TX 75231

www.lpc.com

SOUTHWEST MEDICAL PLAZA II

5801 Oakbend Trail | Fort Worth, TX 76132

Outpatient Medical For Lease

723 - 12,250 SF



Property Overview

This off-campus Outpatient Medical Building is ideally positioned along the Chisholm Trail growth corridor. Residing minutes away from Texas Health Harris Methodist Southwest Hospital, TCU, and the Fort Worth Medical District, Southwest Medical Plaza II offers convenience for patients and staff.

Property Highlights

- Immediate access to the Chisholm Trail tollway and southwest Fort Worth growth corridor
- Convenient access to Texas Health Harris Methodist Southwest Hospital, Fort Worth Medical District, and TCU
- No Use Restrictions
- Free Parking for Patients & Staff
- Adjacent to Baylor Scott & White Surgicare

Availabilities	Size
Suite 140	6,170 SF
Suite 150	6,080 SF
Suite 140 & 150	12,250 SF
Suite 265	723 SF
Suite 270	1,315 SF

Douglas Maclay **Banks Newton** **Elizabeth Madden**

214.461.2371
dmaclay@lpc.com

214.461.2388
bnewton@lpc.com

214.461.2366
emadden@lpc.com

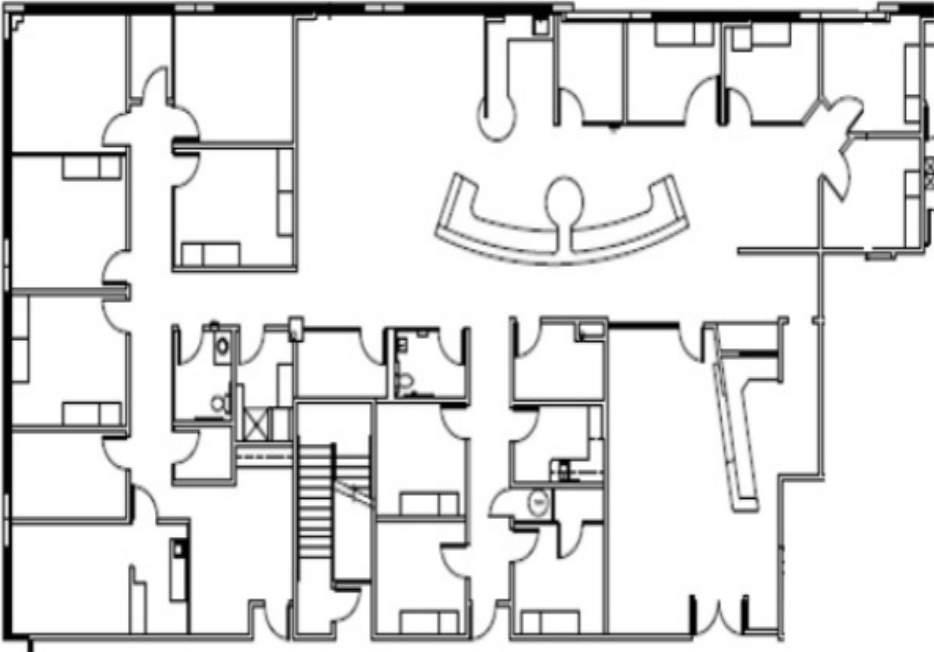
Lincoln

SOUTHWEST MEDICAL PLAZA II

5801 Oakbend Trail | Fort Worth, TX 76132

Suite 140

6,170 SF



Suite	Size
Suite 140	6,170 SF

Douglas Maclay **Banks Newton** **Elizabeth Madden**
214.461.2371 214.461.2388 214.461.2366
dmaclay@lpc.com bnewton@lpc.com emadden@lpc.com

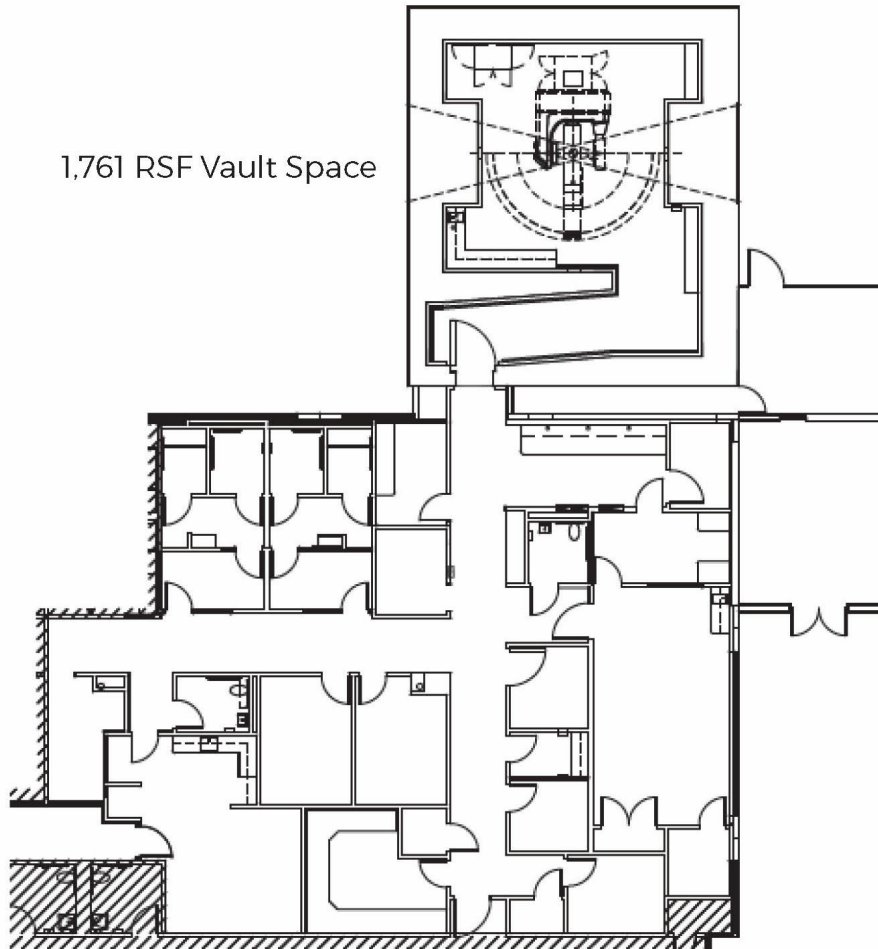
Lincoln

SOUTHWEST MEDICAL PLAZA II

5801 Oakbend Trail | Fort Worth, TX 76132

Suite 150

6,080 SF



Suite	Size
Suite 150	6,080 SF

Douglas Maclay

214.461.2371
dmaclay@lpc.com

Banks Newton

214.461.2388
bnewton@lpc.com

Elizabeth Madden

214.461.2366
emadden@lpc.com

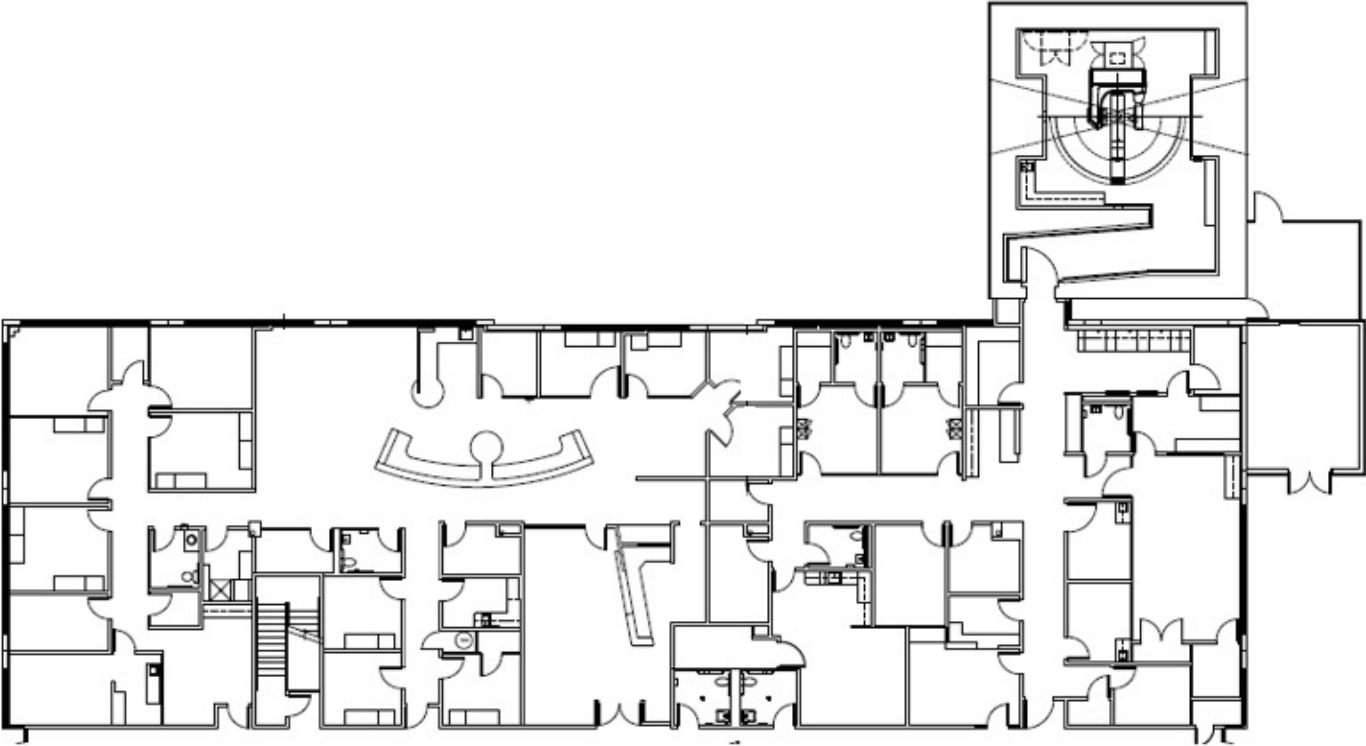
Lincoln

SOUTHWEST MEDICAL PLAZA II

5801 Oakbend Trail | Fort Worth, TX 76132

Suite 140 & 150

12,250 SF



Suite	Size
Suite 140 & 150	12,250 SF

Douglas Maclay **Banks Newton** **Elizabeth Madden**
214.461.2371 214.461.2388 214.461.2366
dmaclay@lpc.com bnewton@lpc.com emadden@lpc.com

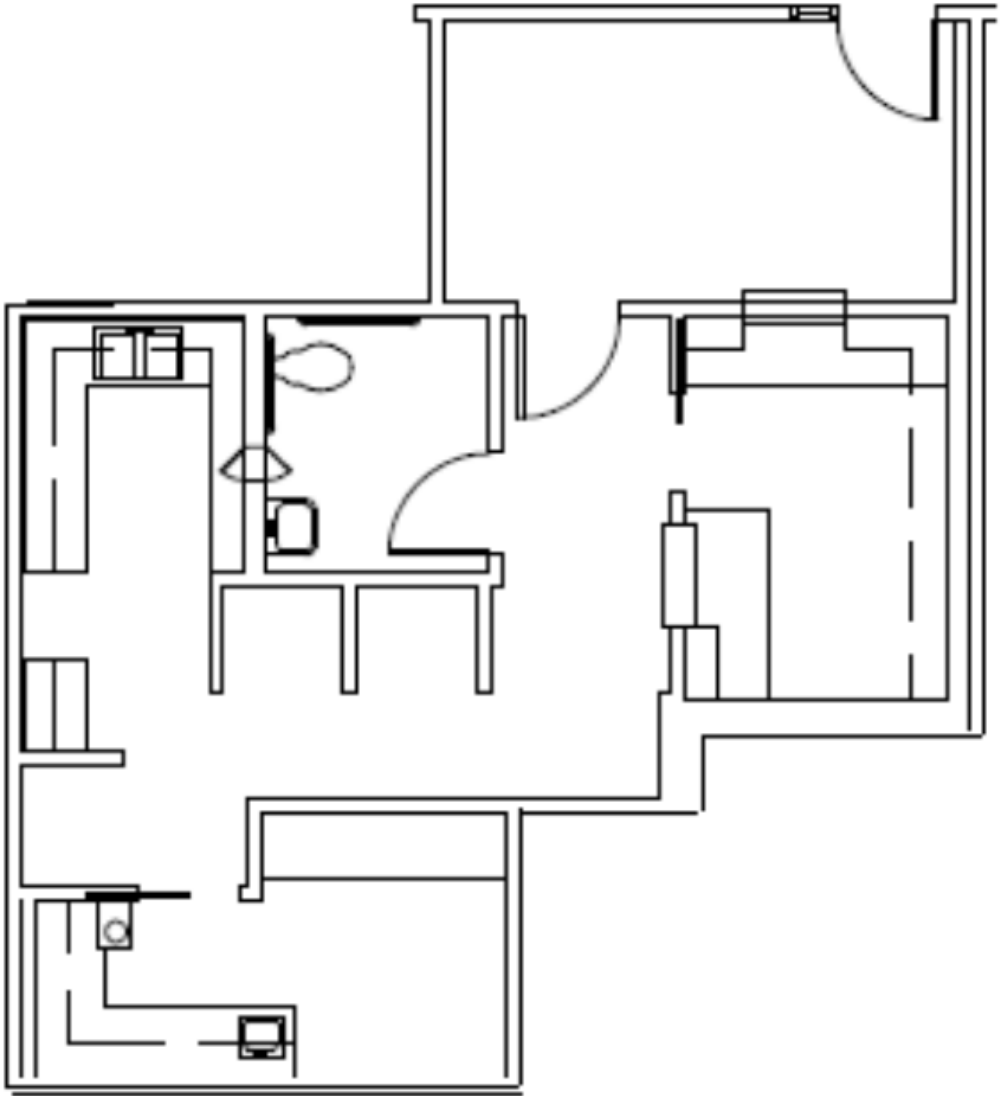
Lincoln

SOUTHWEST MEDICAL PLAZA II

5801 Oakbend Trail | Fort Worth, TX 76132

Suite 265

723 SF



Suite

Suite 265

Size

723 SF

Douglas Maclay

214.461.2371
dmaclay@lpc.com

Banks Newton

214.461.2388
bnewton@lpc.com

Elizabeth Madden

214.461.2366
emadden@lpc.com

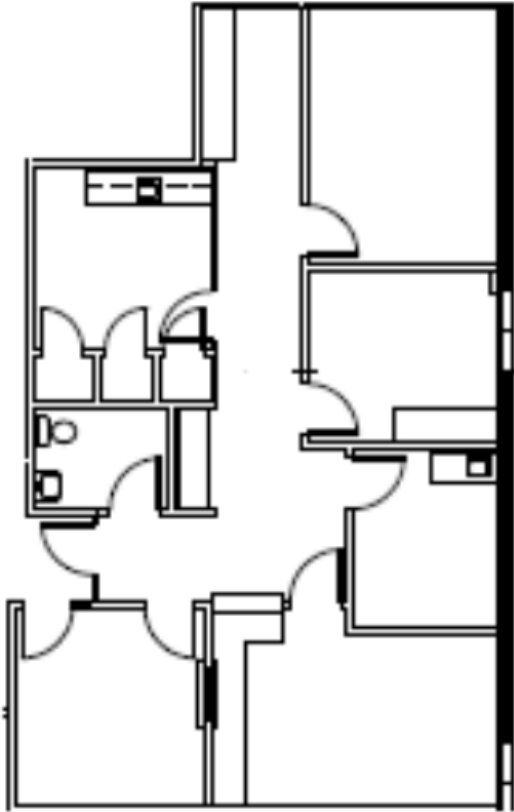
Lincoln

SOUTHWEST MEDICAL PLAZA II

5801 Oakbend Trail | Fort Worth, TX 76132

Suite 270

1,315 SF



Suite	Size
Suite 270	1,315 SF

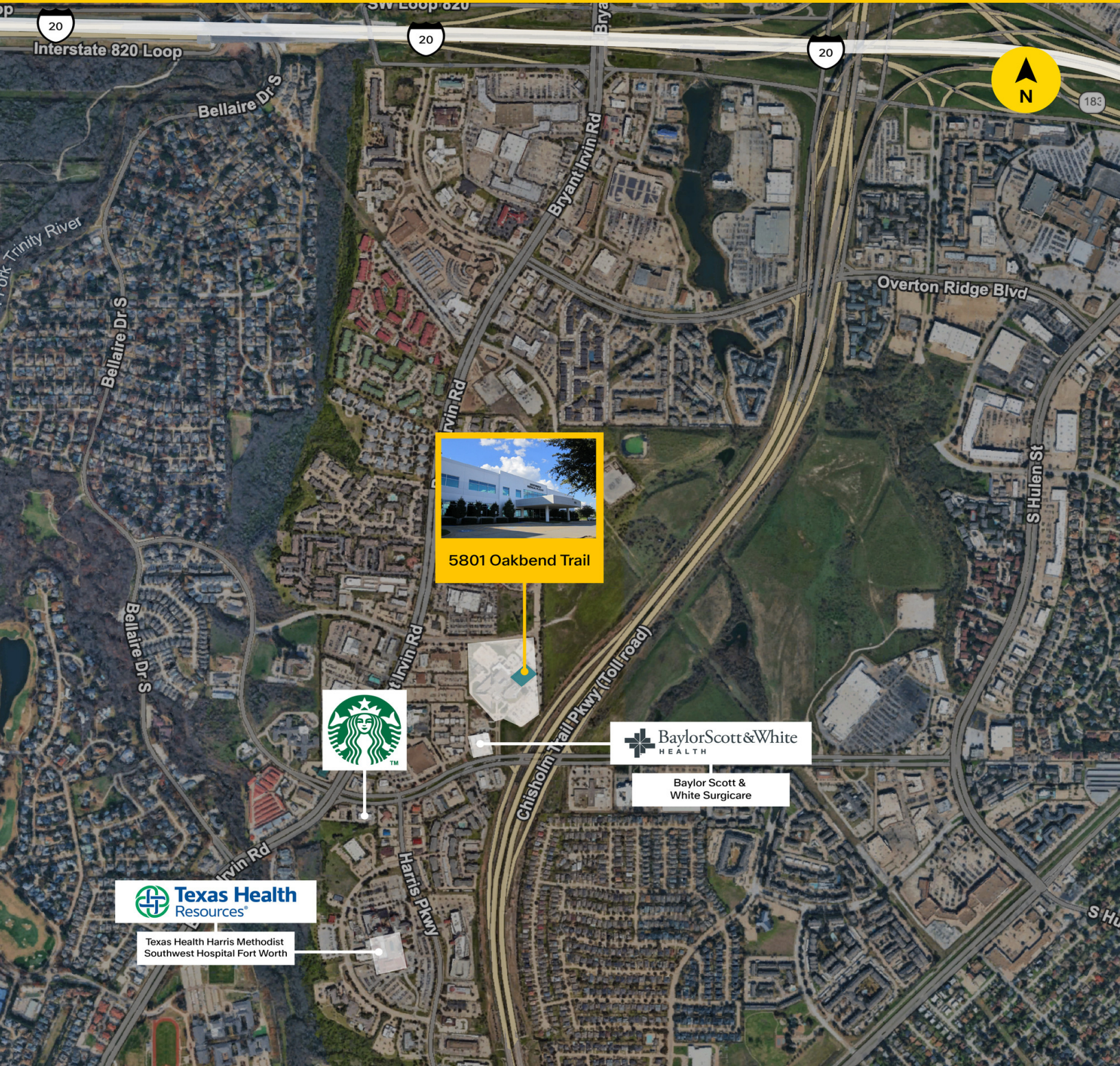
Douglas Maclay **Banks Newton** **Elizabeth Madden**
214.461.2371 214.461.2388 214.461.2366
dmaclay@lpc.com bnewton@lpc.com emadden@lpc.com

Lincoln

SOUTHWEST MEDICAL PLAZA II

5801 Oakbend Trail | Fort Worth, TX 76132

Nearby Amenities



Douglas Maclay

214.461.2371
dmaclay@lpc.com

Banks Newton

214.461.2388
bnewton@lpc.com

Elizabeth Madden

214.461.2366
emadden@lpc.com

Lincoln



SOUTHWEST MEDICAL PLAZA II

Healthpeak® | **DOC
LISTED
NYSE**

5801 Oakbend Trail
Fort Worth, TX 76132

Leasing Information:
214.461.2383

Douglas Maclay
214.461.2371
dmaclay@lpc.com

Banks Newton
214.461.2388
bnewton@lpc.com

Elizabeth Madden
214.461.2366
emadden@lpc.com

Lincoln

8140 Walnut Hill Lane
Suite 700
Dallas, TX 75231

www.lpc.com