

11 N WASHINGTON ST

Rockville, MD 20850



Leasing Information:
301.304.8300

Ethan Bernardi
301.304.8397
ebernardi@lpc.com

Nathan Bortnick
301.304.8392
nbortnick@lpc.com

Richard Coppola
301.304.8405
rcoppola@lpc.com

Lincoln

1101 Wootton Pkwy | Suite 410
Rockville, MD 20854

www.lpc.com

11 N WASHINGTON STREET

Rockville, MD 20850

Property Summary

2,436 - 14,555 SF



Property Highlights

- Suite 470: Brand new, high-end spec suite coming soon
- Building improvements forthcoming, including lobby enhancements, future conference facility and tenant lounge
- Exterior building signage available for full-floor tenant
- Full-floor opportunity available on the 7th floor (14,555 SF)
- On-site property management
- Free Gold's Gym membership available to tenants
- Proximity to I-270 (1.5 mi), ICC (4.6 mi) & I-370 (3.0 mi)
- Minutes from MARC and Rockville Metro Station
- Walking distance to Rockville Town Square

Availabilities

SF

Suite 200	3,632 SF
Suite 300	7,554 SF
Spec Suite 470	2,436 SF
Suite 500	2,910 SF
Suite 540	10,189 SF
Suite 700	11,756 SF
Suite 720	2,799 SF

Ethan Bernardi **Nathan Bortnick** **Richard Coppola**

301.304.8397
ebernardi@lpc.com

301.304.8392
nbortnick@lpc.com

301.304.8405
rcoppola@lpc.com

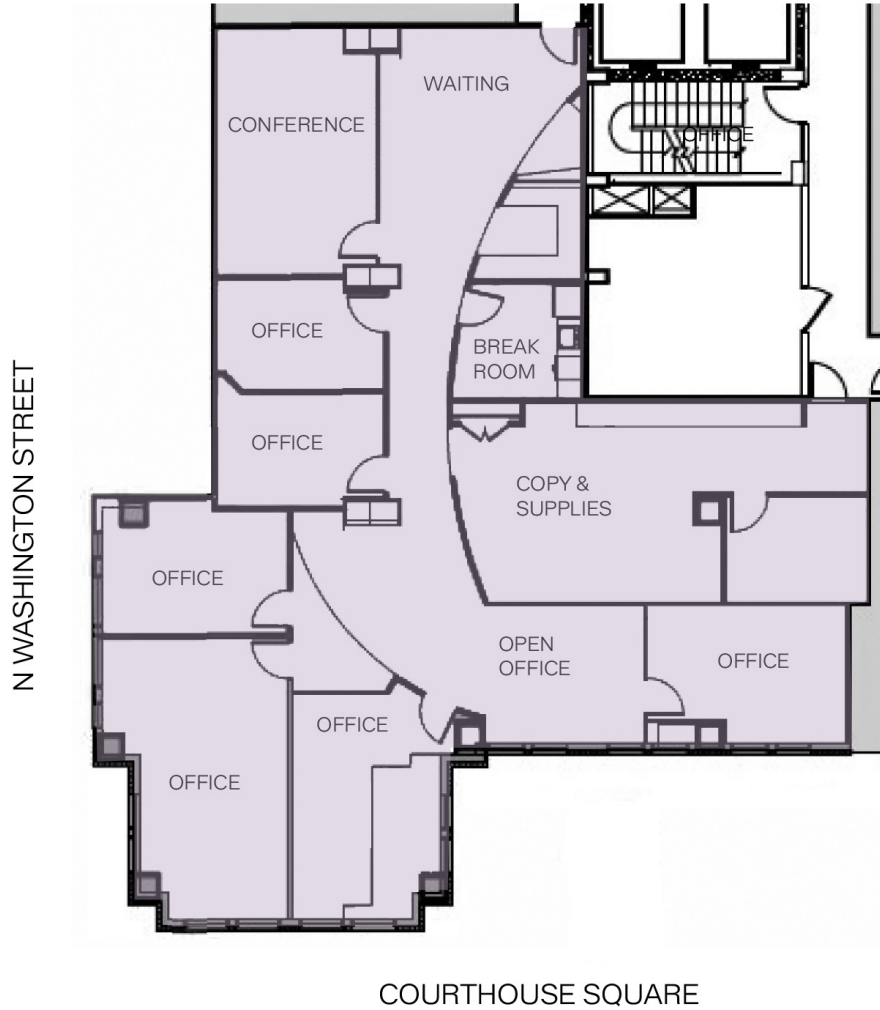
Lincoln

11 N WASHINGTON STREET

Rockville, MD 20850

Suite 200

3,632 SF



Suite	Size	Description
■ Suite 200	3,632 SF	Available immediately

Ethan Bernardi **Nathan Bortnick** **Richard Coppola**

301.304.8397
ebernardi@lpc.com

301.304.8392
nbortnick@lpc.com

301.304.8405
rcoppola@lpc.com

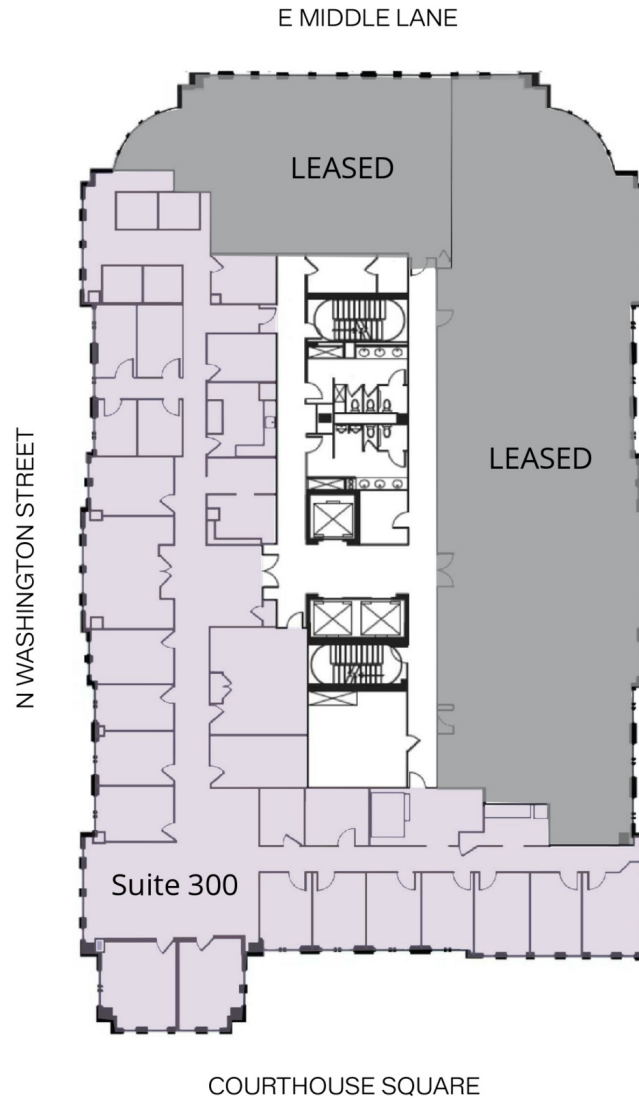
Lincoln

11 N WASHINGTON STREET

Rockville, MD 20850

Suite 300

7,554 SF



Suite	Size	Description
■ Suite 300	7,554 SF	Available immediately May be subdivided into smaller suites

Ethan Bernardi **Nathan Bortnick** **Richard Coppola**

301.304.8397
ebernardi@lpc.com

301.304.8392
nbortnick@lpc.com

301.304.8405
rcoppola@lpc.com

Lincoln

11 N WASHINGTON STREET

Rockville, MD 20850

Spec Suite 470

2,436 SF



COURTHOUSE SQUARE

Suite	Size	Description
■ Spec Suite 470	2,436 SF	Brand new, high-end spec suite coming soon!

Ethan Bernardi Nathan Bortnick Richard Coppola

301.304.8397

ebernardi@lpc.com

301.304.8392

nbortnick@lpc.com

301.304.8405

rcoppola@lpc.com

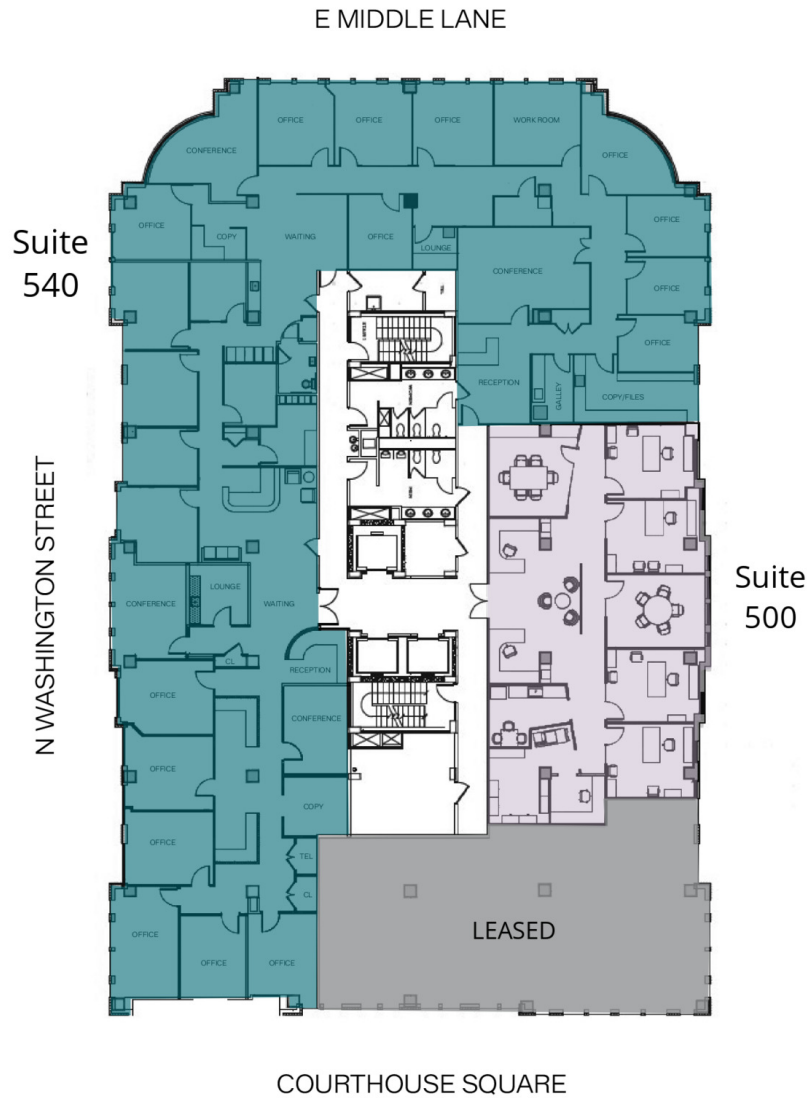
Lincoln

11 N WASHINGTON STREET

Rockville, MD 20850

5th Floor

2,910-10,189 SF



Suite	Size	Description
■ Suite 500	2,910 SF	Available immediately
■ Suite 540	10,189 SF	Available immediately May be subdivided into smaller suites

Ethan Bernardi **Nathan Bortnick** **Richard Coppola**
301.304.8397 301.304.8392 301.304.8405
ebernardi@lpc.com nbortnick@lpc.com rcoppola@lpc.com

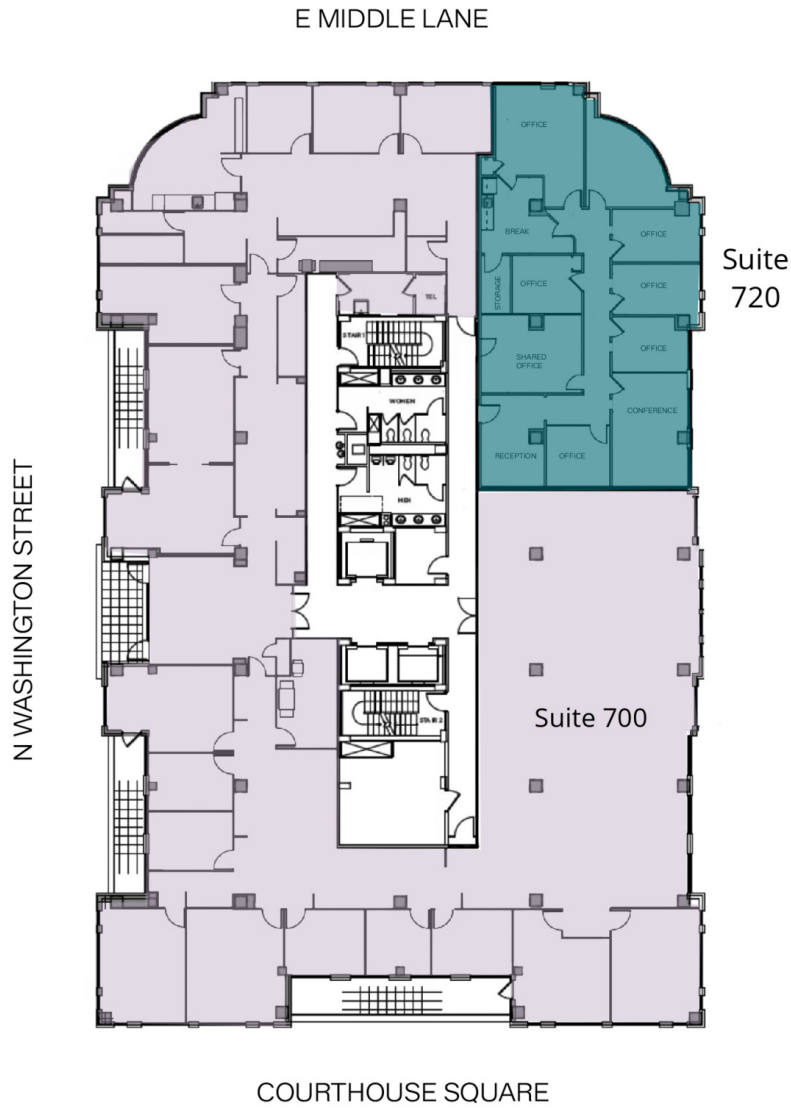
Lincoln

11 N WASHINGTON STREET

Rockville, MD 20850

7th Floor

2,799-11,756 SF



Suite	Size	Description
■ Suite 700	11,756 SF	Full top floor (14,555 SF) available immediately. Private balcony included.
■ Suite 720	2,799 SF	Full top floor (14,555 SF) available immediately.

Ethan Bernardi **Nathan Bortnick** **Richard Coppola**

301.304.8397
ebernardi@lpc.com

301.304.8392
nbortnick@lpc.com

301.304.8405
rcoppola@lpc.com

Lincoln

E MIDDLE LANE



N WASHINGTON STREET

COURTHOUSE SQUARE

Ethan Bernardi Nathan Bortnick Richard Coppola
 301.304.8397 301.304.8392 301.304.8405
 ebernardi@lpc.com nbortnick@lpc.com rcoppola@lpc.com



E MIDDLE LANE



N WASHINGTON STREET

COURTHOUSE SQUARE

Ethan Bernardi Nathan Bortnick Richard Coppola
 301.304.8397 301.304.8392 301.304.8405
 ebernardi@lpc.com nbortnick@lpc.com rcoppola@lpc.com

Lincoln

11 N WASHINGTON STREET

Rockville, MD 20850

Nearby Retail



Ethan Bernardi
301.304.8397
ebernard@lpc.com

Nathan Bortnick
301.304.8392
nbortnick@lpc.com

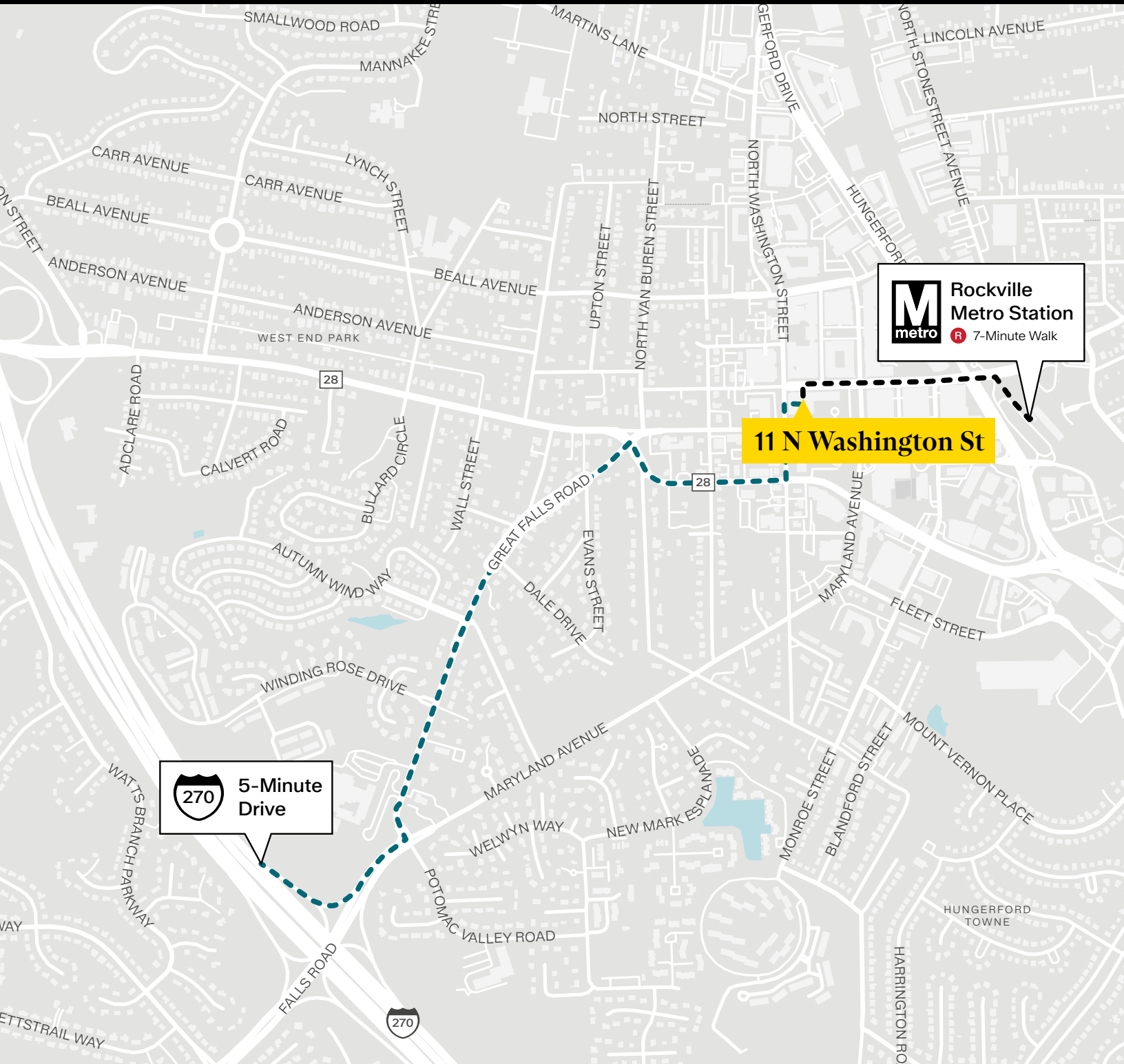
Richard Coppola
301.304.8405
rcoppola@lpc.com

Lincoln

11 N WASHINGTON STREET

Rockville, MD 20850

Convenient Access



Ethan Bernardi

301.304.8397
ebernardi@lpc.com

Nathan Bortnick

301.304.8392
nbortnick@lpc.com

Richard Coppola

301.304.8405
rcoppola@lpc.com

Lincoln



11 N WASHINGTON STREET

Rockville, MD 20850

Leasing Information:
301.304.8300

Ethan Bernardi
301.304.8397
ebernardi@lpc.com

Nathan Bortnick
301.304.8392
nbortnick@lpc.com

Richard Coppola
301.304.8405
rcoppola@lpc.com

Lincoln

1101 Wootton Pkwy
Suite 410
Rockville, MD 20854

www.lpc.com