



FOR SALE

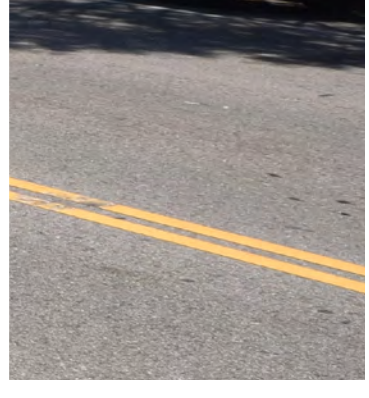
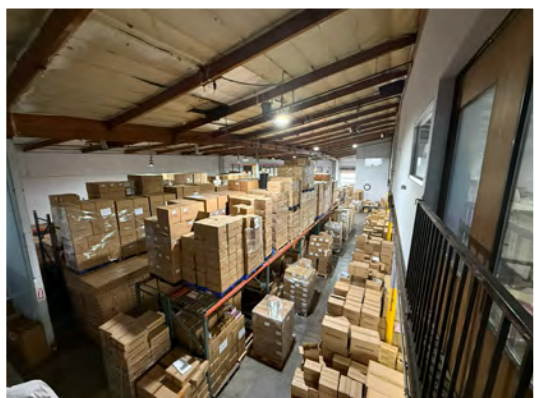
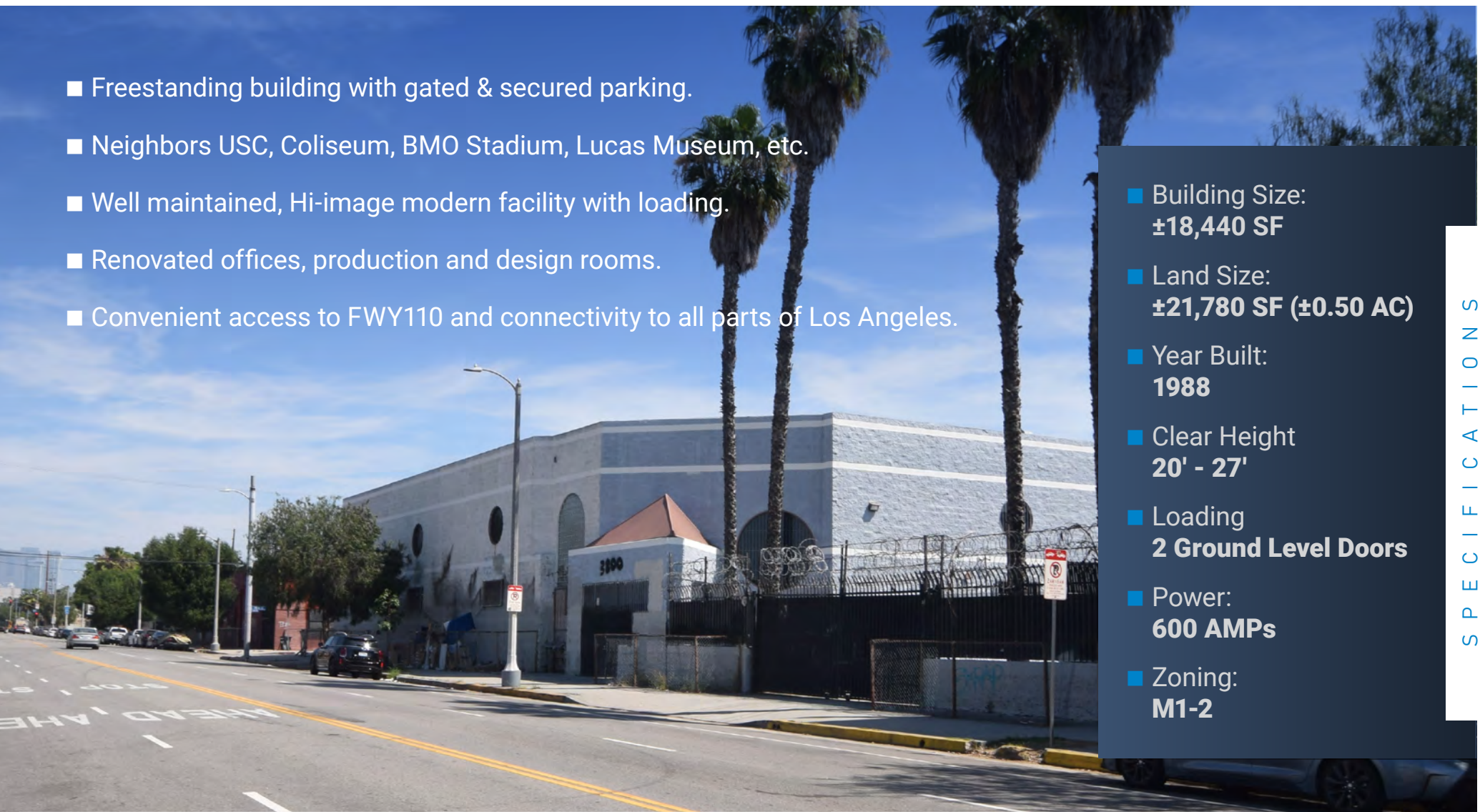
±18,440 SF

LOS ANGELES, CA

 CUSHMAN &
WAKEFIELD
GILL | BURNS | YOO

- Freestanding building with gated & secured parking.
- Neighbors USC, Coliseum, BMO Stadium, Lucas Museum, etc.
- Well maintained, Hi-image modern facility with loading.
- Renovated offices, production and design rooms.
- Convenient access to FWY110 and connectivity to all parts of Los Angeles.

- Building Size:
±18,440 SF
- Land Size:
±21,780 SF (±0.50 AC)
- Year Built:
1988
- Clear Height
20' - 27'
- Loading
2 Ground Level Doors
- Power:
600 AMPs
- Zoning:
M1-2





PARCEL MAP





BRANDON GILL
Executive Director
+1 213 629 6528
brandon.gill@cushwake.com
Lic 01262330

BRANDON BURNS
Executive Director
+1 213 629 6541
brandon.burns@cushwake.com
Lic 01194796

JAE YOO
Executive Director
+1 213 629 6551
jae.yoo@cushwake.com
Lic 01503567