

818 E. MEADOWLARK RD.



LEGACY
COMMERCIAL PROPERTY

818 E. MEADOWLARK RD., DERBY, KS 67037

PROPERTY SUMMARY



PROPERTY DESCRIPTION

Uncover the potential of 818 E. Meadowlark Rd., Derby, KS, 67037. This exceptional property offers a prime leasing opportunity, with high visibility and accessibility for retail and strip center tenants. The well-maintained exterior, ample parking, and expansive windows contribute to the property's attractive curb appeal. Inside, the spacious layout provides a versatile canvas for customization, ideal for accommodating a range of business needs. With its convenient access to major roadways and Derby's thriving community, this property presents an unmissable opportunity for businesses seeking a strategic location primed for success. Take advantage of this opportunity to establish your business in a coveted, high-traffic location.

PROPERTY HIGHLIGHTS

- High visibility for retail and strip center tenants
- Ample on-site parking for tenants and customers
- Spacious interior layout for versatile customization
- Convenient access to major roadways and transportation



Presented By:

Legacy Commercial Property

847.904.9200

info@legacypro.com



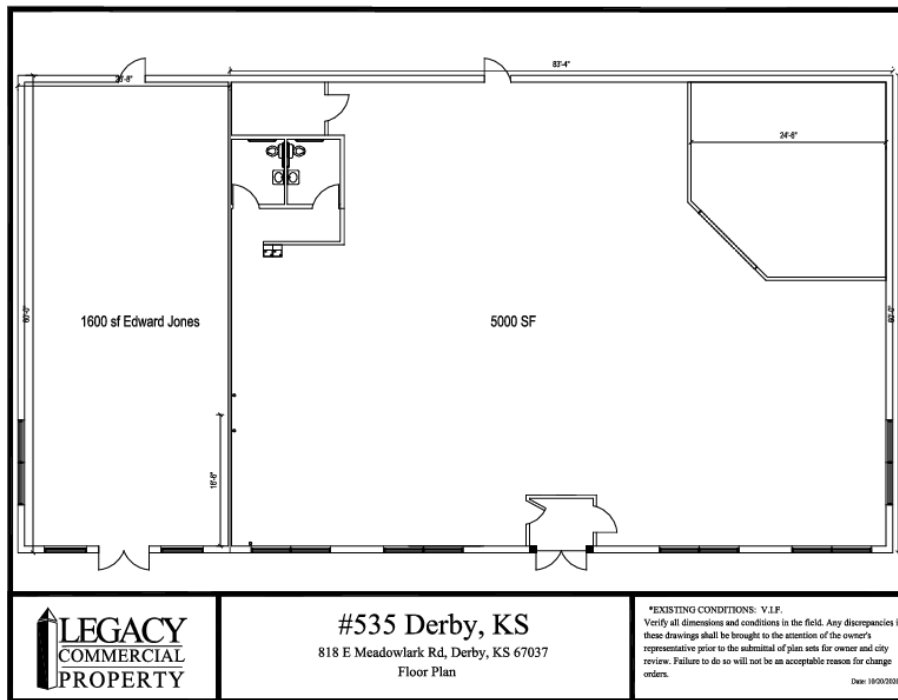
LEGACY
COMMERCIAL PROPERTY

209 Powell Place
Brentwood, TN 37027
<http://legacypro.com>

818 E. MEADOWLARK RD.

818 E. MEADOWLARK RD., DERBY, KS 67037

SITE PLANS



Presented By:

Legacy Commercial Property

847.904.9200

info@legacypro.com



LEGACY
COMMERCIAL PROPERTY

209 Powell Place
Brentwood, TN 37027
<http://legacypro.com>

818 E. MEADOWLARK RD.

818 E. MEADOWLARK RD., DERBY, KS 67037

RETAILER MAP



Presented By:

Legacy Commercial Property

847.904.9200

info@legacypro.com



LEGACY
COMMERCIAL PROPERTY

209 Powell Place
Brentwood, TN 37027
<http://legacypro.com>

818 E. MEADOWLARK RD.

818 E. MEADOWLARK RD., DERBY, KS 67037

RENT ROLL

TENANT NAME	UNIT NUMBER	UNIT SIZE (SF)	LEASE START	LEASE END	ANNUAL RENT	% OF GLA	PRICE PER SF/YR
Edward Jones BR#16941	A	1,600			\$0	24.24	\$0.00
Vacant	B	5,000			\$0	75.76	\$0.00
Totals/Averages		6,600			\$0		\$0.00

Presented By:

Legacy Commercial Property

847.904.9200

info@legacypro.com



LEGACY

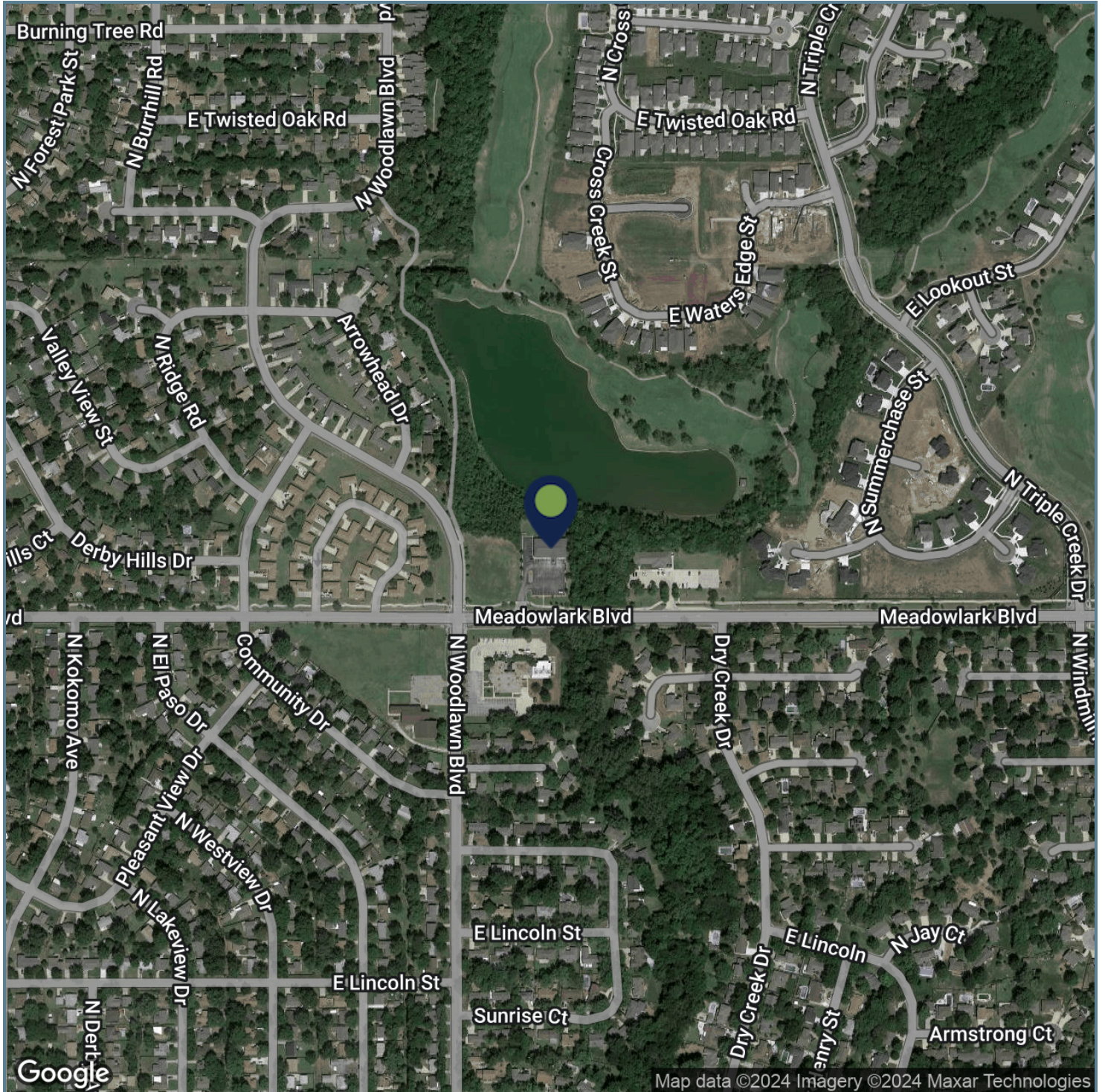
COMMERCIAL PROPERTY

209 Powell Place
Brentwood, TN 37027
<http://legacypro.com>

818 E. MEADOWLARK RD.

818 E. MEADOWLARK RD., DERBY, KS 67037

LOCATION MAP



Presented By:

Legacy Commercial Property

847.904.9200

info@legacypro.com



LEGACY

COMMERCIAL PROPERTY

209 Powell Place

Brentwood, TN 37027

<http://legacypro.com>