

133 West 19th Street

Entire 7th Floor | New York, NY 10011

4,500 RSF Move-In Ready Office



Fully furnished, move-in ready entire-floor office in Chelsea

SIZE

4,500 RSF

PREMISES

Entire 7th Floor

CONDITION

Fully Furnished

AVAILABILITY

Move-In Ready

OVERVIEW

Turnkey Chelsea Office Installation

Move-in ready, fully furnished entire 7th floor office space available in Chelsea. This recently renovated 4,500 RSF suite offers great natural light with windows on three sides, hardwood floors, dimmable linear LED lighting, and an efficient office layout.

Space Highlights

- Great natural light with windows on three sides
- Recently renovated with hardwood floors
- Dimmable linear LED lighting
- Large open bullpen plus private offices
- Wet pantry, conference room and huddle rooms

LEASE TERMS

Lease Terms / Additional Charges

Term	3-5 years
Annual Escalations	3%
Electric	Direct-metered
Water	\$110/month
Sprinkler	\$60/month
Technology Fee	\$20/month
Window Cleaning	\$35/window, charged biannually
Trash	Additional
Real Estate Taxes	Tenant's proportionate share of increases over the base year

Technology fee covers building subscriptions associated with remote intercom and access control systems.

Interior Photos & Existing Conditions

Fully furnished open office, meeting rooms, pantry and support areas



Open bullpen with hardwood floors and linear LED lighting



Glass-fronted conference / lounge area



Wet pantry



Conference room



Small meeting / huddle room

WORKSPACE

Built for Immediate Occupancy

The suite is configured for a tenant that wants an efficient, functional layout without a long buildout period. The existing installation combines an open team area, enclosed rooms for calls and meetings, and furnished workstations throughout.

- 3 private offices
- 2 small meeting rooms
- Conference room
- Large open bullpen
- Wet pantry
- Window A/C
- Direct-metered electric



Chelsea view / natural light



Restrooms and glass-fronted rooms

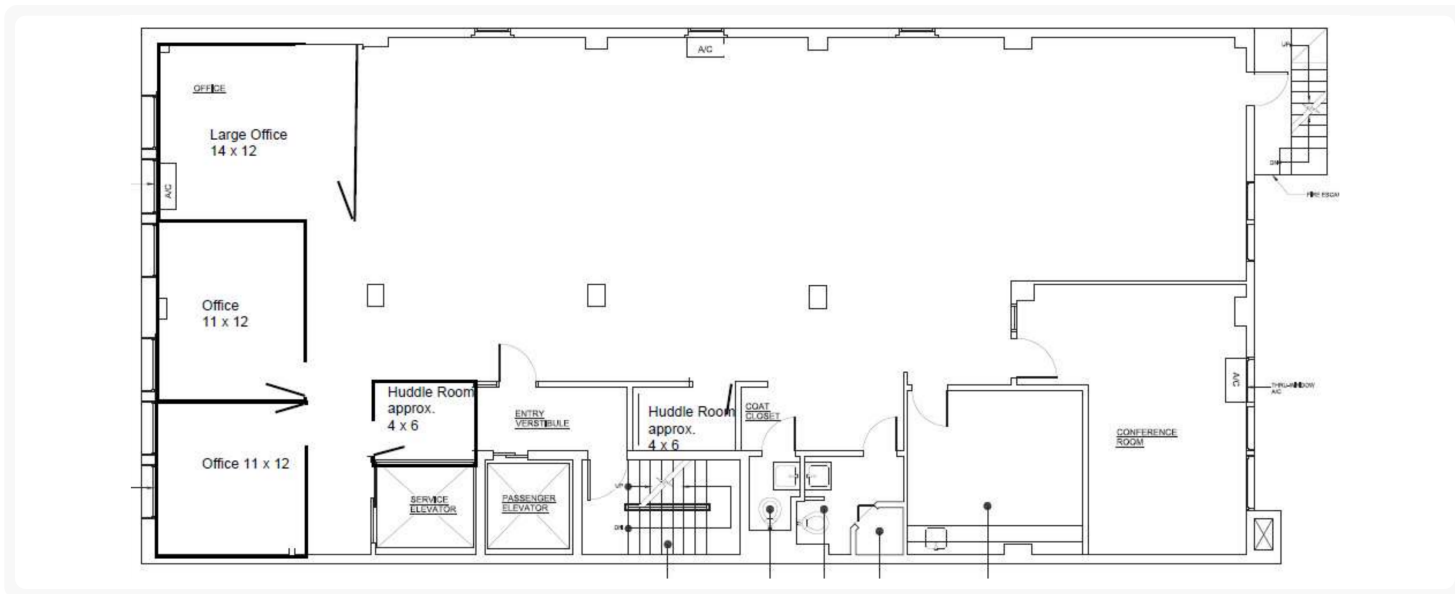


Entire 7th Floor | 4,500 RSF | Fully Furnished | Move-In Ready

Floor Plan & Layout

Entire 7th floor configuration - not to scale

4,500 RSF



Floor Plan - Entire 7th Floor (image preserved without distortion)

LAYOUT

Efficient Full-Floor Office Plan

- Large central open bullpen / workstation area
- Three private offices along the window line
- Two compact huddle rooms near the elevator/core
- Conference room on the opposite side of the floor
- Wet pantry and support areas near the building core

Listing Summary

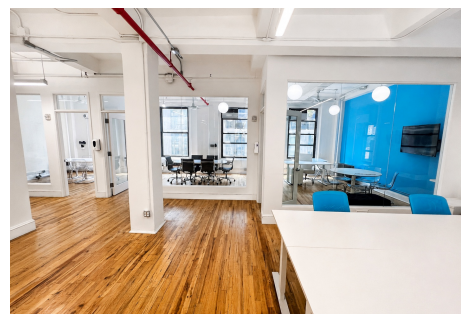
Premises	Entire 7th Floor
Size	Approx. 4,500 RSF
Condition	Move-in ready / fully furnished
Availability	Immediate



Conference room



Private / meeting office



Glass-fronted offices

All information is subject to change and should be independently verified. Floor plan is provided for reference only.