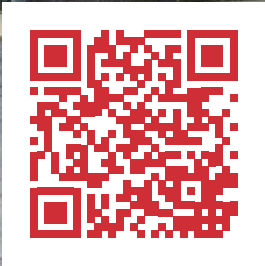


# 8080 RAVINES EDGE CT

COLUMBUS, OH 43235

[WWW.WORTHINGTONMEDICALBUILDING.COM](http://WWW.WORTHINGTONMEDICALBUILDING.COM)

**NA**Ohio Equities



Scan or click here to  
view property website

***5,505 SF UP TO 15,988 SF OF MEDICAL OFFICE SPACE  
TENANT CONCESSIONS AVAILABLE BASED ON LEASE TERM***

8080 Ravines Edge Court is a 15,988 square foot, two-story medical office building located in the Worthington submarket. The property is situated in a park-like setting overlooking a serene wooded ravine. The building has two medical office suites available with the ability to combine suites for a single tenant. 8080 Ravines Edge Court features include monument signage, one passenger elevator, in-suite restrooms, and convenient parking. The location offers close proximity I-270, I-71, SR-315 and numerous amenities.

**Philip Bird, SIOR**  
614.629.5296  
pbird@ohioequities.com

**Matt Gregory, SIOR, CCIM**  
614.629.5234  
mgregory@ohioequities.com

**Mitchell Moore**  
614.629.5257  
mmoore@ohioequities.com

# AVAILABLE SPACE

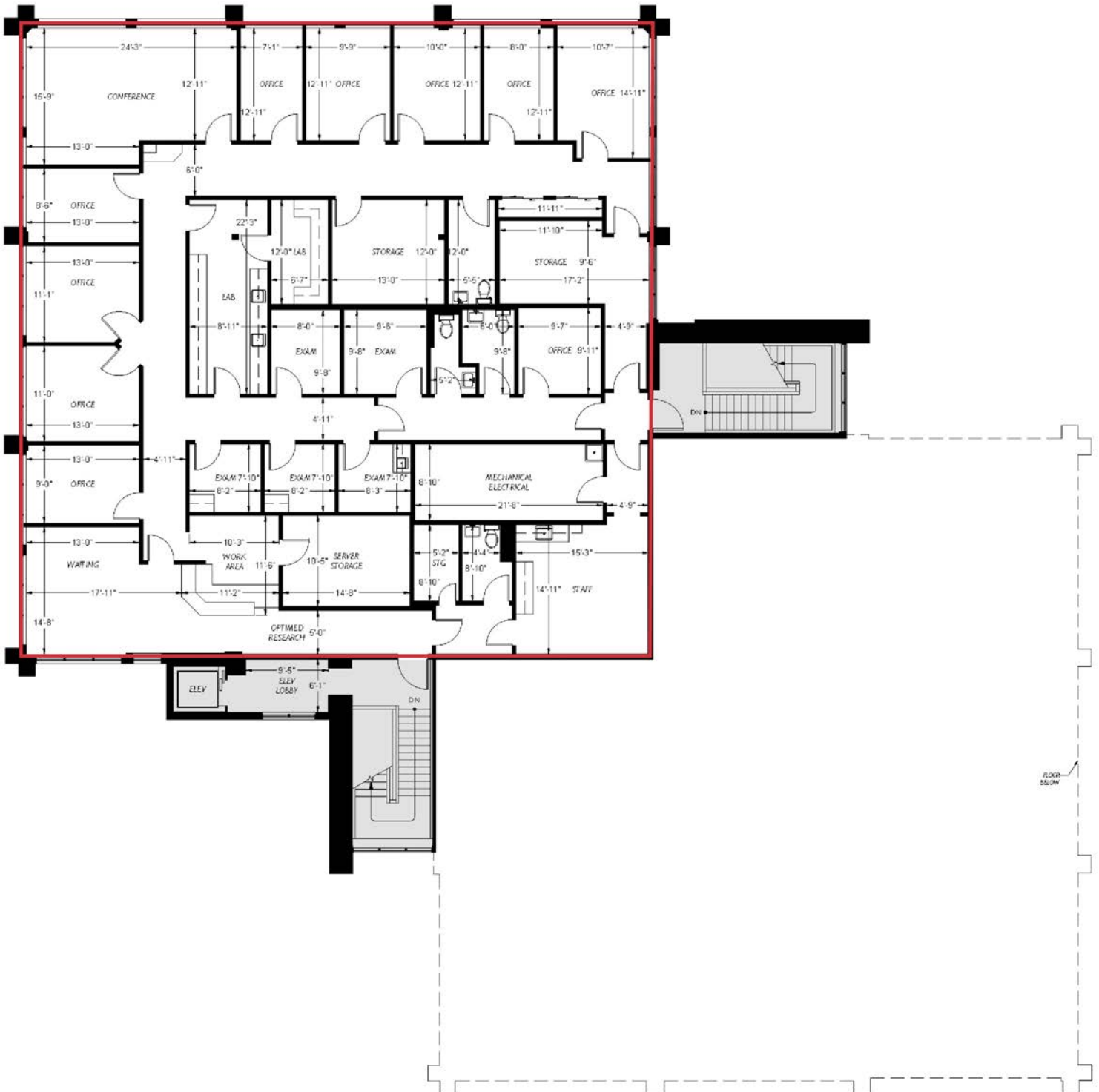
Suite	SF	Lease Rate	Available
100	10,483	\$15.95/SF NNN	Now
200	5,505	\$15.95/SF NNN	07/01/2026
100+200	15,988	\$15.95/SF NNN	

2025 Operating Expenses: \$11.16/SF





# SUITE 200 FLOOR PLAN | 5,505 SF



# INTERIOR PHOTOGRAPHS



**FIRST FLOOR**



**FIRST FLOOR**



**FIRST FLOOR**



**FIRST FLOOR**



**FIRST FLOOR**



**FIRST FLOOR**

# INTERIOR PHOTOGRAPHS



**FIRST FLOOR**



**FIRST FLOOR**



**SECOND FLOOR**



**SECOND FLOOR**

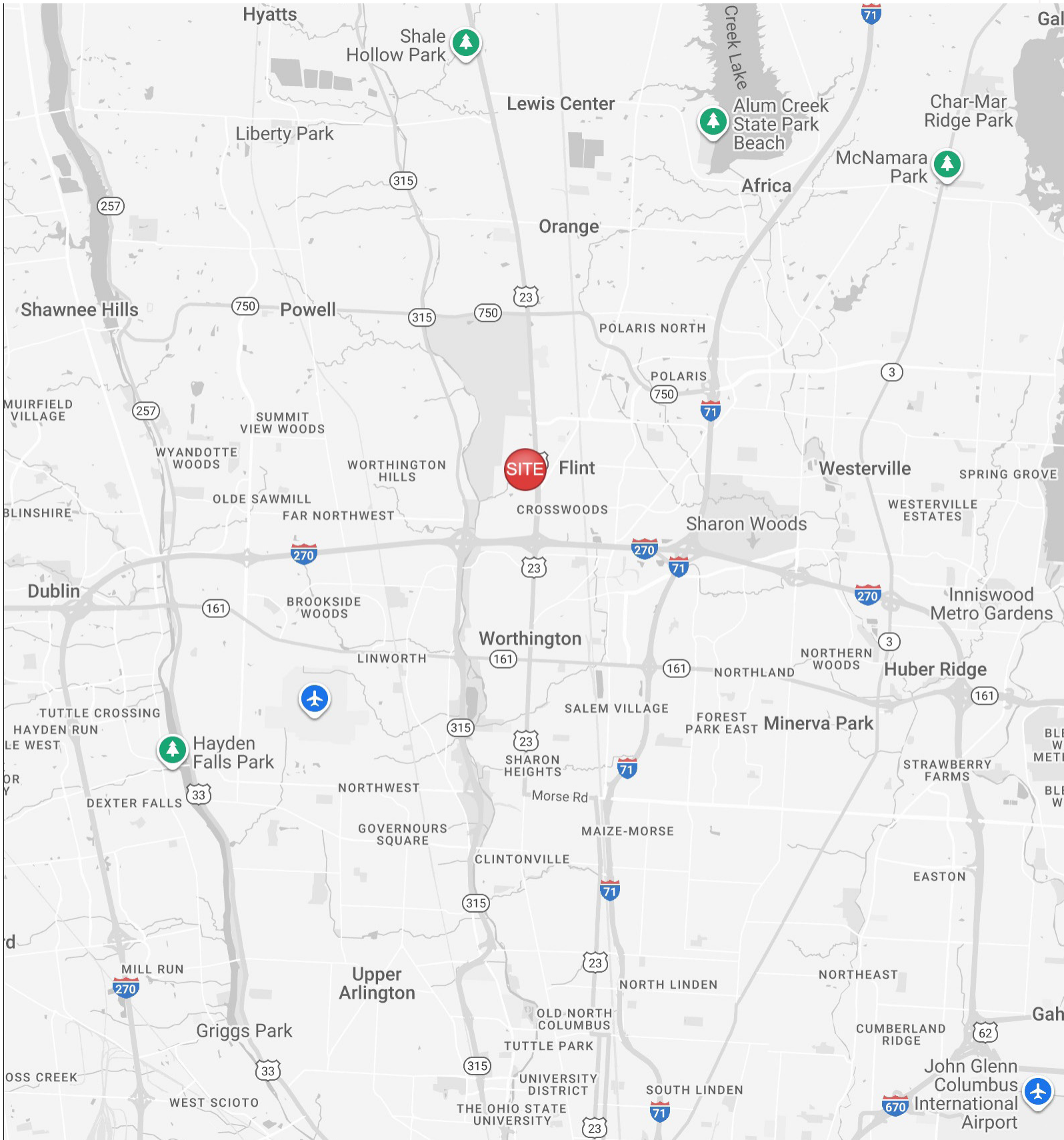


**SECOND FLOOR**



**SECOND FLOOR**

# LOCATION MAP



# NEARBY AMENITIES MAP



ABILITY CHIROPRACTIC  
 614 NAIL BAR  
 WAFFLE HOUSE  
 Tim Hortons  
 PAWS VETERINARY

Wendy's  
 TACO BELL  
 EL TORERO

Hyatt Place  
 Courtyard  
 Days Inn by Wyndham  
 Holiday Inn Express  
 Wyndham  
 Sheraton Suites  
 WoodSpring Suites  
 Red Roof PLUS+  
 Quality Inn & Suites  
 Extended Stay America-Select Suites

i Gilbert's  
 Bob Evans  
 LALOR'S  
 Level One  
 Starbucks  
 TAPPY GREEK

THE SHOPS AT WORTHINGTON PLACE  
 First Watch  
 PIADA  
 Panera BREAD  
 TALBOTS  
 ORVIS  
 Aladdin's

Kroger  
 CF BANK  
 PNC  
 J. LIV  
 ETHAN ALLEN

McDonald's  
 Starbucks  
 JJ'S  
 WINGS  
 FedEx

WORTHINGTON GATEWAY  
 BLUE BOAT COUNSELING  
 CLUB PILATES  
 Orangetheory FITNESS  
 tropical CAFE  
 CUBS  
 The NOW  
 magoos  
 MAPLE STREET  
 livewell animal hospital  
 GoYoga  
 DiBella's Subs  
 FIVE GUYS

# CONTACT US

## PHILIP BIRD, SIOR

Senior Vice President



614.629.5296



614.557.9967



[pbird@ohioequities.com](mailto:pbird@ohioequities.com)

## MATT GREGORY, SIOR, CCIM

Executive Managing Director



614.629.5234



614.937.6501



[mgregory@ohioequities.com](mailto:mgregory@ohioequities.com)

## MITCHELL MOORE

Senior Associate



614.629.5257



614.940.6139



[mmoore@ohioequities.com](mailto:mmoore@ohioequities.com)

